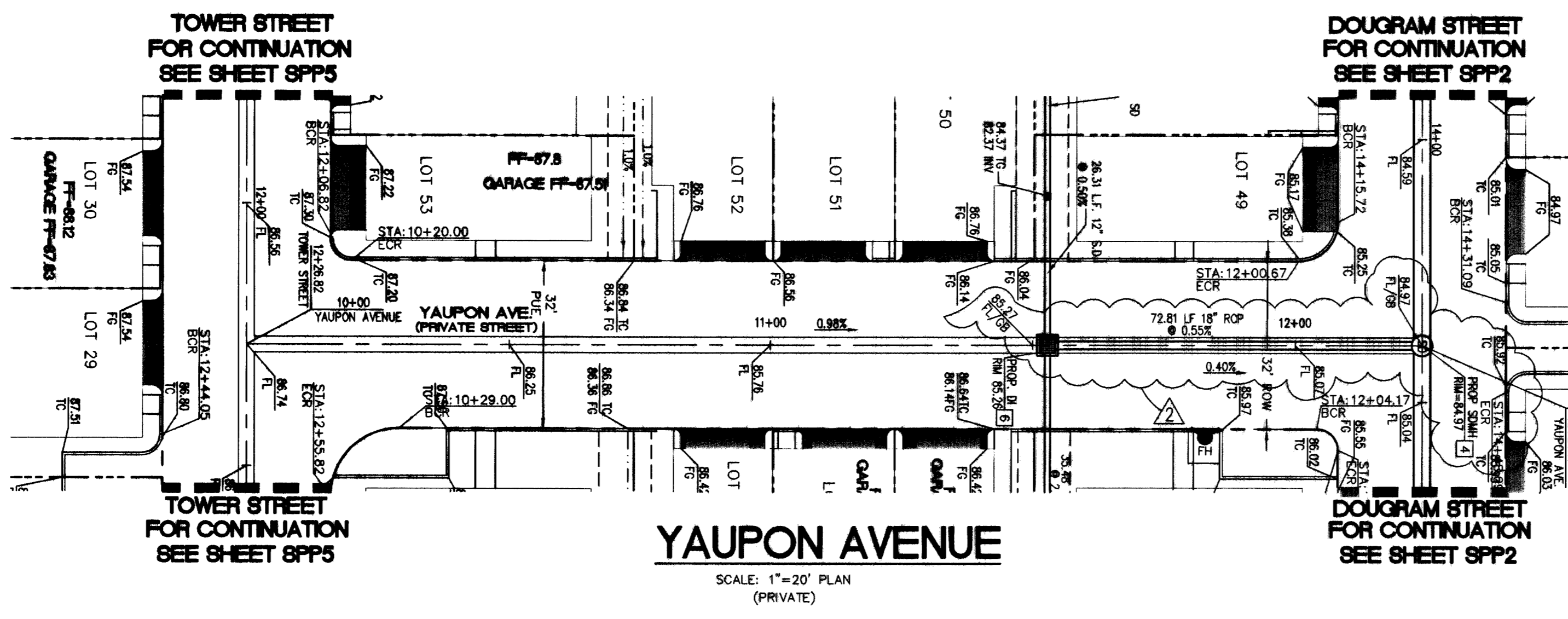
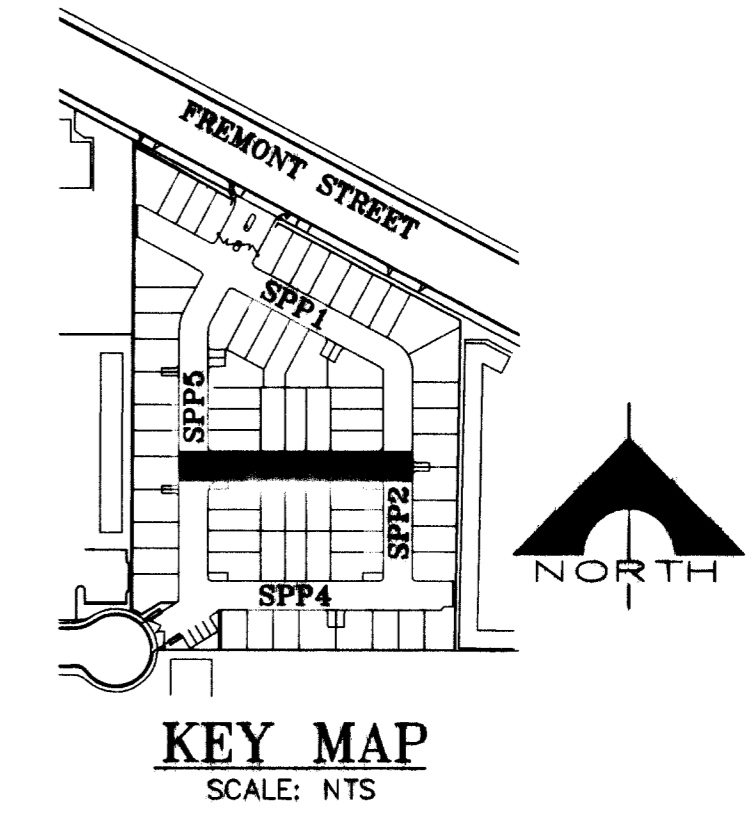
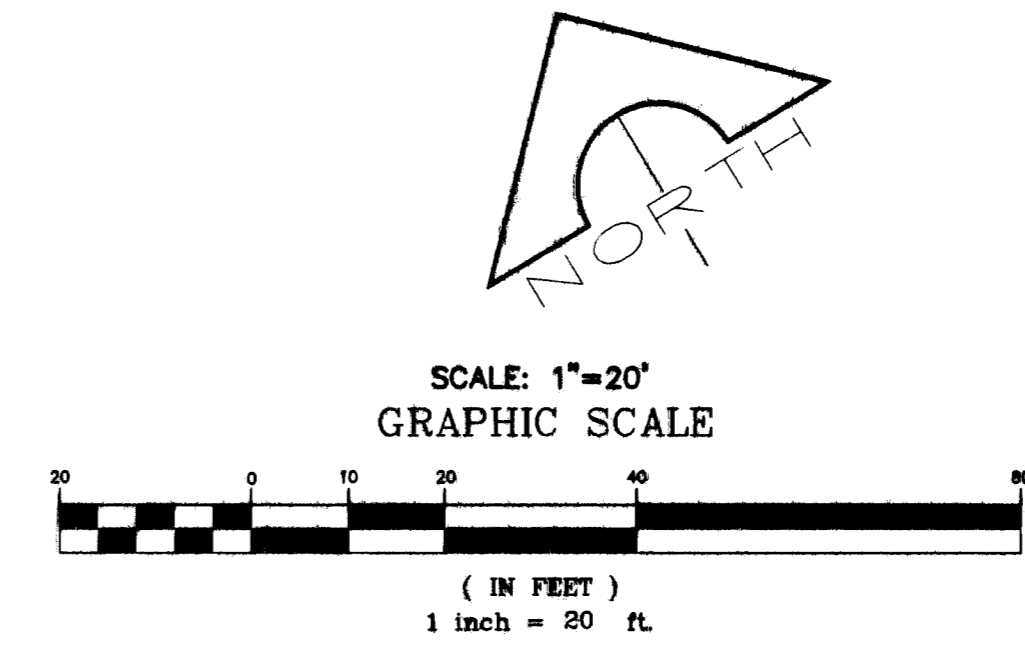


CALL BEFORE YOU DIG
 1-800-227-2600
 UNDERGROUND SERVICE ALERT (USA)

CALL BEFORE YOU OVERHEAD
 1-800-227-2929
 NEVADA POWER ENVIRONMENT AND SAFETY SERVICES DEPARTMENT



BASIS OF BEARING

NORTH 31°15' W
 BEING THE WEST LINE OF THE SE 1/4 OF SECTION 35, TOWNSHIP 20 SOUTH, RANGE 61 EAST, M.D.M. CLARK COUNTY, NEVADA, AS PER RECORD OF SURVEY FILE 117 PAGE 75, CLARK COUNTY, NEVADA RECORDS.

BENCHMARK

BM NO. 72013556
 ELEVATION = 1905.28'
 NAVD'88
 RIVET AND PLATE IN T/C, NW COR. OF FREMONT ST. AND BRUCE ST. NEAR THE P.C. OF FREMONT ST.

FEMA INFORMATION

SITE IS LOCATED IN ZONE 'X', AREA DETERMINED TO BE OUTSIDE OF 500 YEAR FLOOD ZONE PER FIRM MAP NO. 32003-C-2170-E EFFECTIVE SEPT. 27, 2002.

QUANTITIES ON-SITE

CURB & GUTTER (TYPE 'L' & 'A') 2,500 LF
 2" ASPHALTIC CONCRETE PAVING 5,403 SY
 TYPE II GRAVEL BASE 1,275 CY
 CROSS GUTTER 3,059 SF

EARTHWORK QUANTITY

TOT FILL 1,035 CY
 TOT CUT 945 CY
 NET FILL 90 CY

NOTE:

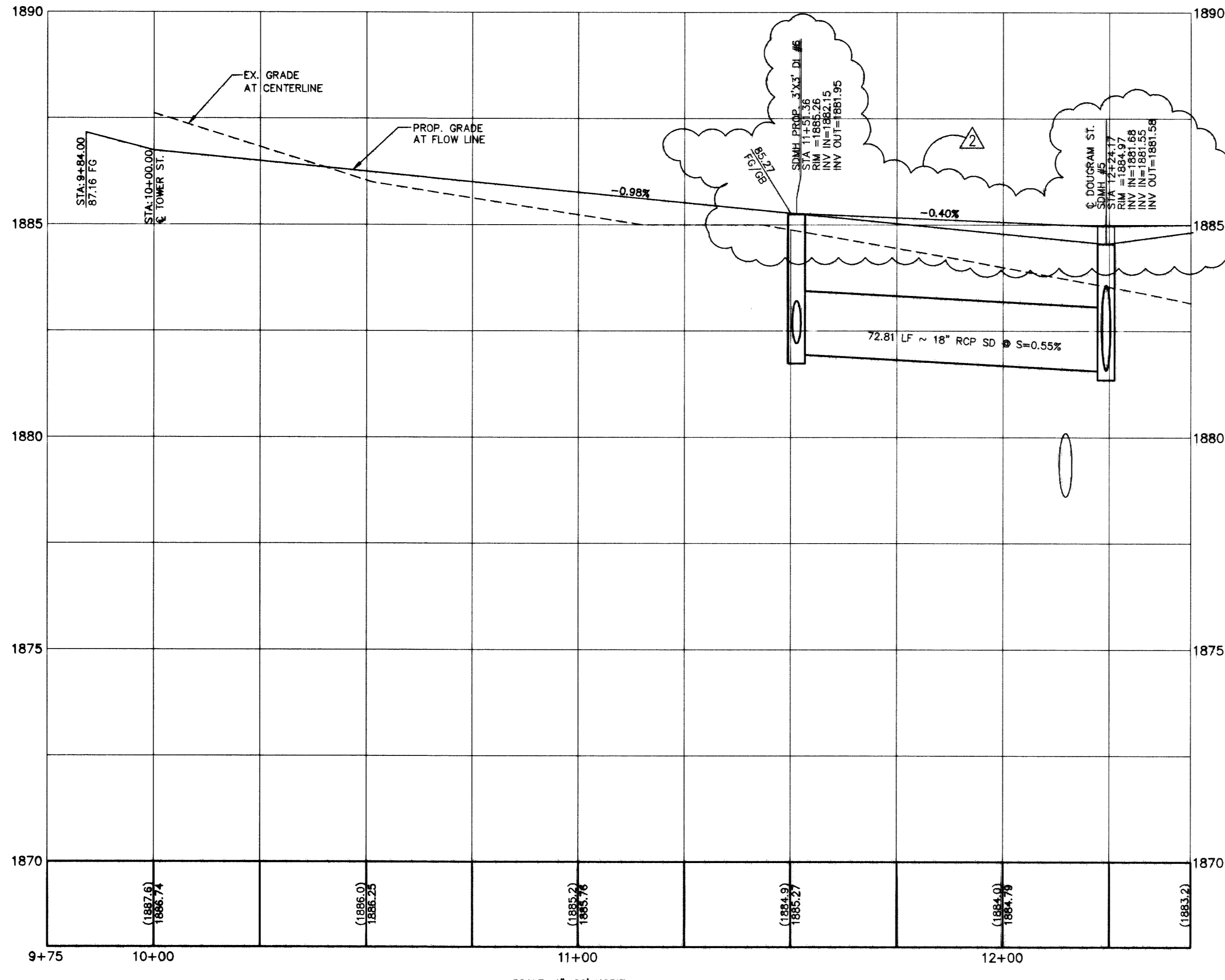
ALL PRIVATE DRIVES ARE P.U.E., PUBLIC SEWER EASEMENTS, AND PUBLIC DRAINAGE EASEMENTS TO BE PRIVATELY MAINTAINED BY HOA

STORMDRAIN SCHEDULE

- | | |
|--|--|
| <p>1 PROP. 3'x3' DI STA 13+11.65 RIM = 1883.90 INV OUT=1881.07</p> <p>2 PROP. 3'x3' DI STA 13+15.33 RIM = 1883.88 INV = 1881.04</p> <p>3 PROP. 60" TYPE III SDMH STA 13+22.17 RIM = 1883.87 INV IN=1881.00 INV OUT=1880.80 BOLT DOWN MH LID</p> <p>4 PROP. 60" TYPE III SDMH STA 14+38.22 RIM = 1884.37 INV IN=1881.68 INV OUT=1881.58 BOLT DOWN MH LID</p> <p>5 PROP. 3'x3' DI STA 11+52.81 RIM = 1885.26 INV OUT=1881.95</p> | <p>7 PROP. 60" TYPE I SDMH STA 12+24.17 RIM = 1885.72 INV IN=1882.82 INV OUT=1882.42 BOLT DOWN MH LID</p> <p>10 PROP. 60" TYPE I SDMH STA 10+31.07 RIM = 1887.05 INV IN=1883.73 INV OUT=1883.33 BOLT DOWN MH LID</p> <p>11 PROP. 60" TYPE III SDMH STA 0+00 RIM = 1888.55 INV IN=1884.26 INV OUT=1884.06</p> <p>12 PROP. 15" MODIFIED TYPE "CM" DI #12 STA 0+00 GRATE = 1888.55 INV OUT=1884.40</p> <p>13 PROP. 15" MODIFIED TYPE "CM" DI #13 STA 0+00 GRATE = 1888.20 INV OUT=1884.40</p> |
|--|--|

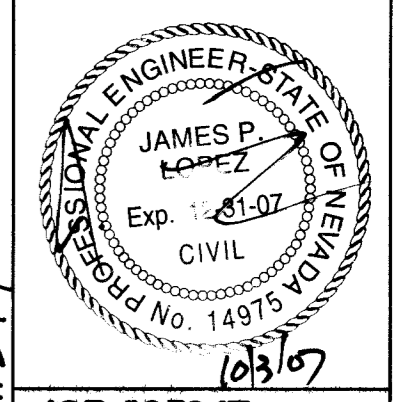
LEGEND

- CENTERLINE
- PROPERTY LINE
- PROPOSED DRAINAGE EASEMENT
- PROPOSED AC AREA
- ASSESSOR'S PARCEL NUMBER
- PROPOSED FIRE HYDRANT
- EXISTING FIRE HYDRANT
- PROPOSED WATER VALVE
- EXISTING WATER VALVE
- STUB & CAP
- EXISTING CONTOUR
- FLOW LINE
- EDGE OF PAVEMENT
- EX. EDGE OF PAVEMENT
- ELECTRICAL TRANSFORMER
- ELECTRICAL PANEL
- SIGHT VISIBILITY ZONE (SVZ)



JPL ENGINEERING INC.
 8620 South Eastern Avenue Suite 8
 Las Vegas, NV 89123
 phone (702) 886-6269 • fax (702) 886-0647

URBAN LOFTS X, LTD
 FREMONT STREET LOFT HOMES
 STREET PLAN + PROFILE
 YAUAPON AVENUE
 JANUARY 2007



JOB #05047
 SHEET NO
SPP3
 15 OF 24
 107Y4945