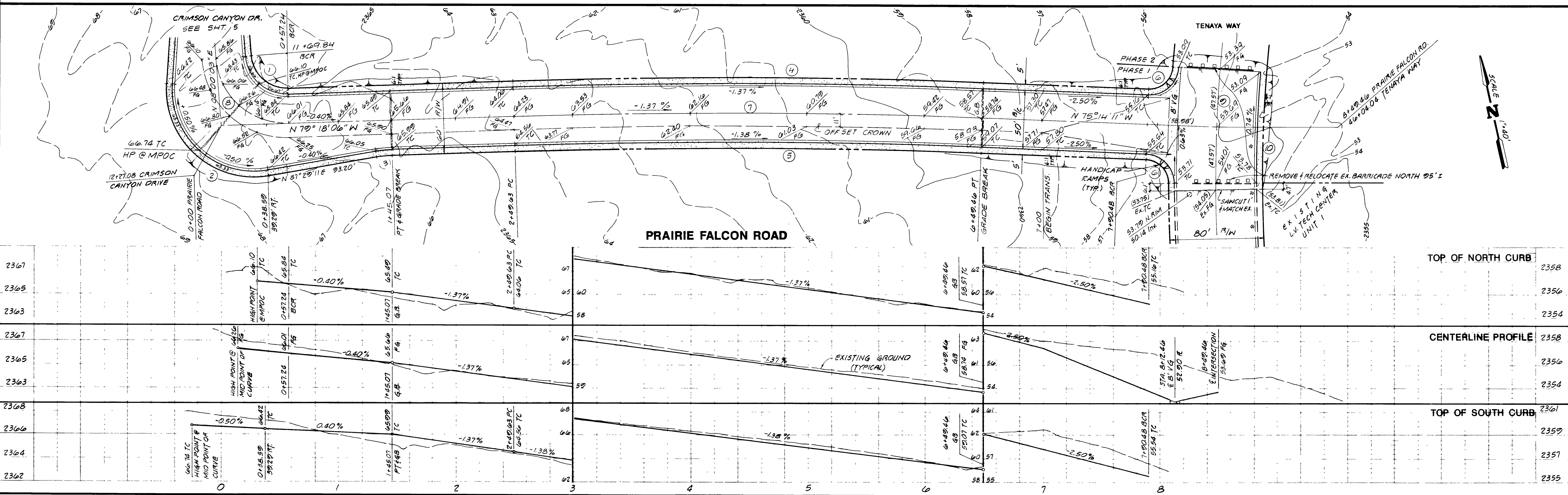


CURVE DATA

NO.	DELTA	RADIUS	LENGTH	TANGENT	LOC.
1	87° 18' 09"	35.00'	53.33'	33.39'	B/C
2	103° 40' 19"	70.00'	126.66'	89.07'	B/C
3	08° 11' 05"	100.00'	14.29'	7.15'	B/C
4	04° 03' 55"	5660.20'	401.60'	200.89'	B/C
5	04° 03' 55"	5610.20'	398.06'	199.11'	B/C
6	87° 39' 52"	25.00'	38.25'	24.00'	B/C
7	04° 03' 55"	5635.20'	399.83'	200.00'	±
8	87° 18' 09"	60.00'	91.42'	57.24'	±
9	04° 40' 15"	1167.01'	95.14'	47.59'	±
10	04° 40' 15"	1132.01'	92.28'	46.17'	B/C

RECORD DRAWING
 From Information Provided
 By The City of Las Vegas
William S. Covert 10/1/99
 Signature Date

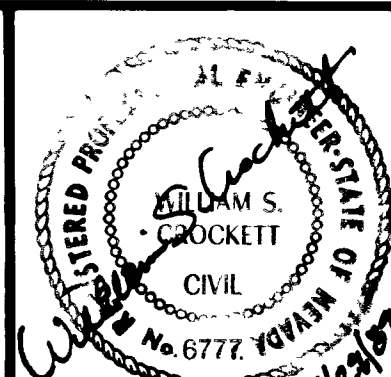
Avoid cutting underground utility lines. If cutting:
Call before you Dig.
 1-800-227-2600
 UNDERGROUND SERVICE USA



NO.	DELTA	R	L	T	LOC.

REVISIONS		
NO.	DATE	DESCRIPTION

DELTA ENGINEERING, INC.
 4500 W. OAKLEY BLVD.
 LAS VEGAS, NEVADA 89102
 PHONE: (702) 877-0988



(H) SCALE: 1"=40' (V) SCALE: 1"=4'
 DATE: OCTOBER, 1999
 J.N.: 890401 DESIGN BY: N.E.M.
 DRAWN BY: G.E.A./M.E.F. CHECKED BY: WSC
 SUBMITTED BY:

STREET PLAN AND PROFILE
 PRAIRIE FALCON ROAD
LAS VEGAS TECHNOLOGY CENTER
 CITY OF LAS VEGAS, CLARK COUNTY, NEVADA
 DRAWING NO.: Dwg. # 107 V1669 SHEET 6 OF 18

