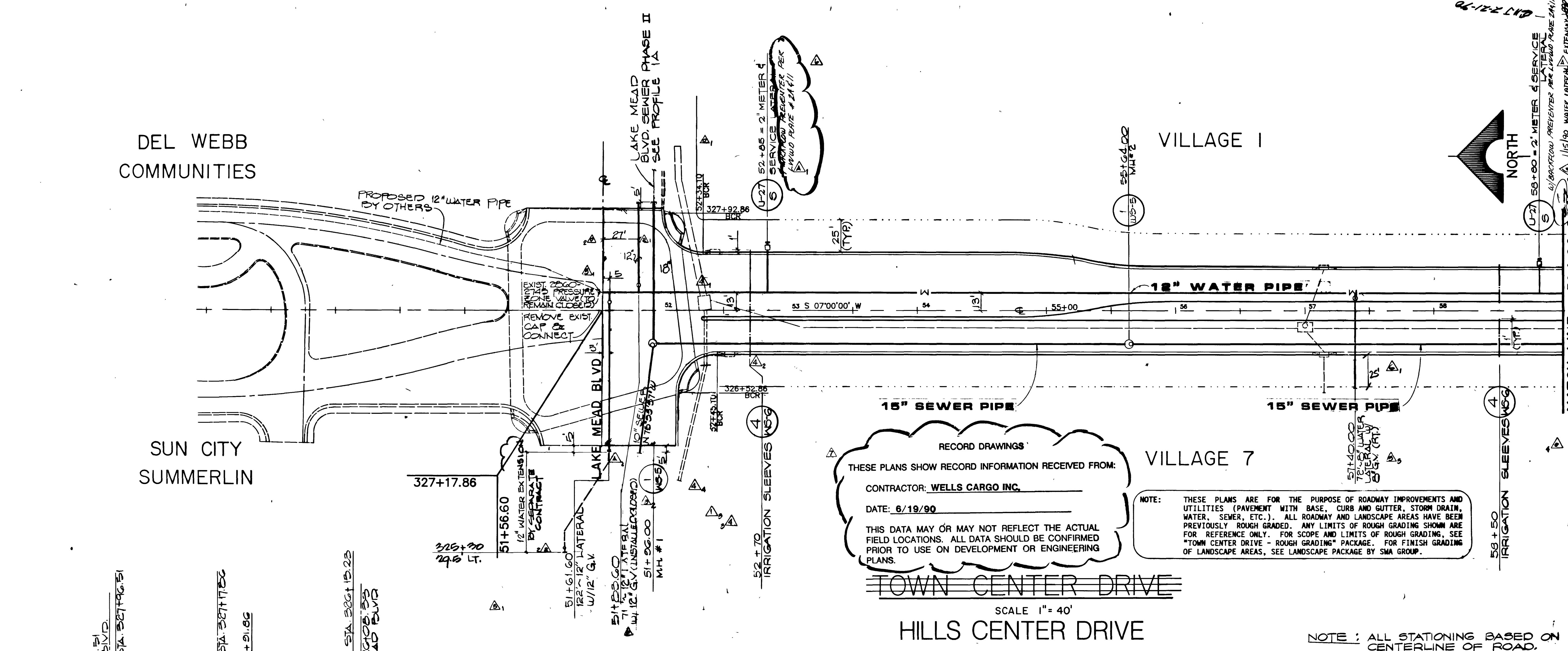
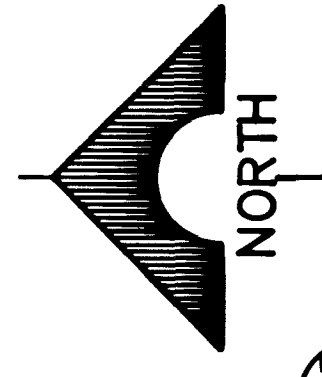


DEL WEBB COMMUNITIES

SUN CITY SUMMERLIN

VILLAGE I

VILLAGE 7

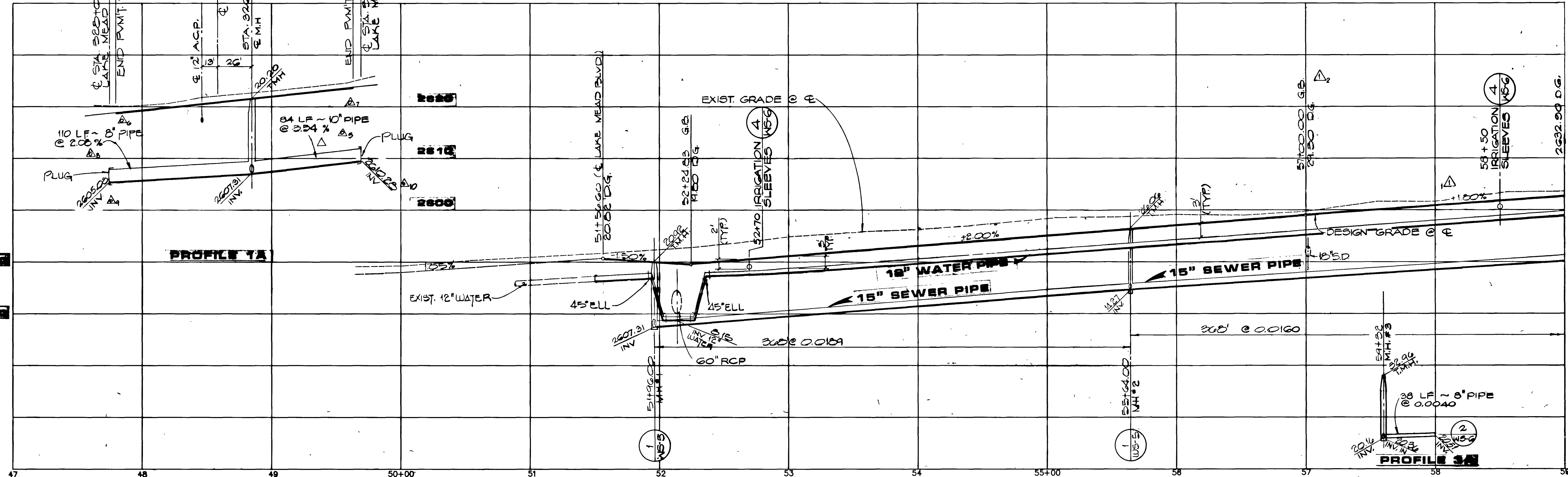


RECORD DRAWINGS
 THESE PLANS SHOW RECORD INFORMATION RECEIVED FROM:
 CONTRACTOR: WELLS CARGO INC.
 DATE: 6/19/90
 THIS DATA MAY OR MAY NOT REFLECT THE ACTUAL FIELD LOCATIONS. ALL DATA SHOULD BE CONFIRMED PRIOR TO USE ON DEVELOPMENT OR ENGINEERING PLANS.

NOTE: THESE PLANS ARE FOR THE PURPOSE OF ROADWAY IMPROVEMENTS AND UTILITIES (PAVEMENT WITH BASE, CURB AND GUTTER, STORM DRAIN, WATER, SEWER, ETC.). ALL ROADWAY AND LANDSCAPE AREAS HAVE BEEN PREVIOUSLY ROUGH GRADED. ANY LIMITS OF ROUGH GRADING SHOWN ARE FOR REFERENCE ONLY. FOR SCOPE AND LIMITS OF ROUGH GRADING, SEE "TOWN CENTER DRIVE - ROUGH GRADING" PACKAGE. FOR FINISH GRADING OF LANDSCAPE AREAS, SEE LANDSCAPE PACKAGE BY SMA GROUP.

TOWN CENTER DRIVE
 HILLS CENTER DRIVE
 SCALE 1" = 40'

NOTE: ALL STATIONING BASED ON CENTERLINE OF ROAD.



SCALE
 HORIZ. - 1" = 40'
 VERT. - 1" = 10'

APPROVAL
[Signature]
 L.V.V.W.B. DATE 8/24/88

2/12/89

REV	DATE	DESCRIPTION
1	08/24/88	ISSUED PER SCU LETTER
2	08/24/88	ISSUED PER SCU LETTER
3	08/24/88	ISSUED PER SCU LETTER
4	08/24/88	ISSUED PER SCU LETTER
5	08/24/88	ISSUED PER SCU LETTER
6	08/24/88	ISSUED PER SCU LETTER
7	08/24/88	ISSUED PER SCU LETTER
8	08/24/88	ISSUED PER SCU LETTER
9	08/24/88	ISSUED PER SCU LETTER
10	08/24/88	ISSUED PER SCU LETTER
11	08/24/88	ISSUED PER SCU LETTER
12	08/24/88	ISSUED PER SCU LETTER
13	08/24/88	ISSUED PER SCU LETTER
14	08/24/88	ISSUED PER SCU LETTER
15	08/24/88	ISSUED PER SCU LETTER
16	08/24/88	ISSUED PER SCU LETTER
17	08/24/88	ISSUED PER SCU LETTER
18	08/24/88	ISSUED PER SCU LETTER
19	08/24/88	ISSUED PER SCU LETTER
20	08/24/88	ISSUED PER SCU LETTER
21	08/24/88	ISSUED PER SCU LETTER
22	08/24/88	ISSUED PER SCU LETTER
23	08/24/88	ISSUED PER SCU LETTER
24	08/24/88	ISSUED PER SCU LETTER
25	08/24/88	ISSUED PER SCU LETTER
26	08/24/88	ISSUED PER SCU LETTER
27	08/24/88	ISSUED PER SCU LETTER
28	08/24/88	ISSUED PER SCU LETTER
29	08/24/88	ISSUED PER SCU LETTER
30	08/24/88	ISSUED PER SCU LETTER
31	08/24/88	ISSUED PER SCU LETTER
32	08/24/88	ISSUED PER SCU LETTER
33	08/24/88	ISSUED PER SCU LETTER
34	08/24/88	ISSUED PER SCU LETTER
35	08/24/88	ISSUED PER SCU LETTER
36	08/24/88	ISSUED PER SCU LETTER
37	08/24/88	ISSUED PER SCU LETTER
38	08/24/88	ISSUED PER SCU LETTER
39	08/24/88	ISSUED PER SCU LETTER
40	08/24/88	ISSUED PER SCU LETTER
41	08/24/88	ISSUED PER SCU LETTER
42	08/24/88	ISSUED PER SCU LETTER
43	08/24/88	ISSUED PER SCU LETTER
44	08/24/88	ISSUED PER SCU LETTER
45	08/24/88	ISSUED PER SCU LETTER
46	08/24/88	ISSUED PER SCU LETTER
47	08/24/88	ISSUED PER SCU LETTER
48	08/24/88	ISSUED PER SCU LETTER
49	08/24/88	ISSUED PER SCU LETTER
50	08/24/88	ISSUED PER SCU LETTER
51	08/24/88	ISSUED PER SCU LETTER
52	08/24/88	ISSUED PER SCU LETTER
53	08/24/88	ISSUED PER SCU LETTER
54	08/24/88	ISSUED PER SCU LETTER
55	08/24/88	ISSUED PER SCU LETTER
56	08/24/88	ISSUED PER SCU LETTER
57	08/24/88	ISSUED PER SCU LETTER
58	08/24/88	ISSUED PER SCU LETTER
59	08/24/88	ISSUED PER SCU LETTER
60	08/24/88	ISSUED PER SCU LETTER
61	08/24/88	ISSUED PER SCU LETTER
62	08/24/88	ISSUED PER SCU LETTER
63	08/24/88	ISSUED PER SCU LETTER
64	08/24/88	ISSUED PER SCU LETTER
65	08/24/88	ISSUED PER SCU LETTER
66	08/24/88	ISSUED PER SCU LETTER
67	08/24/88	ISSUED PER SCU LETTER
68	08/24/88	ISSUED PER SCU LETTER
69	08/24/88	ISSUED PER SCU LETTER
70	08/24/88	ISSUED PER SCU LETTER
71	08/24/88	ISSUED PER SCU LETTER
72	08/24/88	ISSUED PER SCU LETTER
73	08/24/88	ISSUED PER SCU LETTER
74	08/24/88	ISSUED PER SCU LETTER
75	08/24/88	ISSUED PER SCU LETTER
76	08/24/88	ISSUED PER SCU LETTER
77	08/24/88	ISSUED PER SCU LETTER
78	08/24/88	ISSUED PER SCU LETTER
79	08/24/88	ISSUED PER SCU LETTER
80	08/24/88	ISSUED PER SCU LETTER
81	08/24/88	ISSUED PER SCU LETTER
82	08/24/88	ISSUED PER SCU LETTER
83	08/24/88	ISSUED PER SCU LETTER
84	08/24/88	ISSUED PER SCU LETTER
85	08/24/88	ISSUED PER SCU LETTER
86	08/24/88	ISSUED PER SCU LETTER
87	08/24/88	ISSUED PER SCU LETTER
88	08/24/88	ISSUED PER SCU LETTER
89	08/24/88	ISSUED PER SCU LETTER
90	08/24/88	ISSUED PER SCU LETTER
91	08/24/88	ISSUED PER SCU LETTER
92	08/24/88	ISSUED PER SCU LETTER
93	08/24/88	ISSUED PER SCU LETTER
94	08/24/88	ISSUED PER SCU LETTER
95	08/24/88	ISSUED PER SCU LETTER
96	08/24/88	ISSUED PER SCU LETTER
97	08/24/88	ISSUED PER SCU LETTER
98	08/24/88	ISSUED PER SCU LETTER
99	08/24/88	ISSUED PER SCU LETTER
100	08/24/88	ISSUED PER SCU LETTER

RECORD DRAWINGS
 THESE PLANS SHOW RECORD INFORMATION RECEIVED FROM:
 CONTRACTOR: WELLS CARGO INC.
 DATE: 6/19/90
 THIS DATA MAY OR MAY NOT REFLECT THE ACTUAL FIELD LOCATIONS. ALL DATA SHOULD BE CONFIRMED PRIOR TO USE ON DEVELOPMENT OR ENGINEERING PLANS.

HOWARD HUGHES PROPERTIES
 HILLS CENTER DRIVE
 WATER AND SEWER PLAN & PROFILE
 SHEET 76
 OF 25 SHEETS

JOB NO. 880788

694 DIETRICH-POST 60328

1987

11-3-97

107-V1639-1

DEL WEBB
COMMUNITIES

SUN CITY
SUMMERLIN

VILLAGE 1

VILLAGE 7

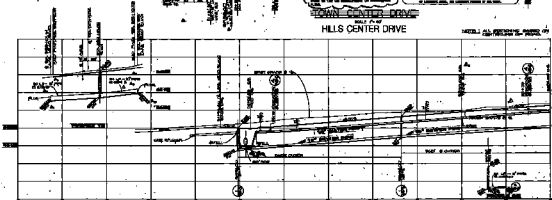
10' EASEMENT

10' EASEMENT

THIS EASEMENT
SHALL BE USED EXCLUSIVELY FOR
RECREATIONAL PURPOSES.
NO OTHER USES ARE PERMITTED.
NO STRUCTURES, UTILITIES OR
OTHER IMPROVEMENTS SHALL BE
PLACED ON THIS EASEMENT.

TOWN CENTER DRIVE
HALF OF
HILLS CENTER DRIVE

NOTED: ALL EASEMENTS BASED ON
CERTIFICATE OF RECORD.



WILLIAMS, INC.