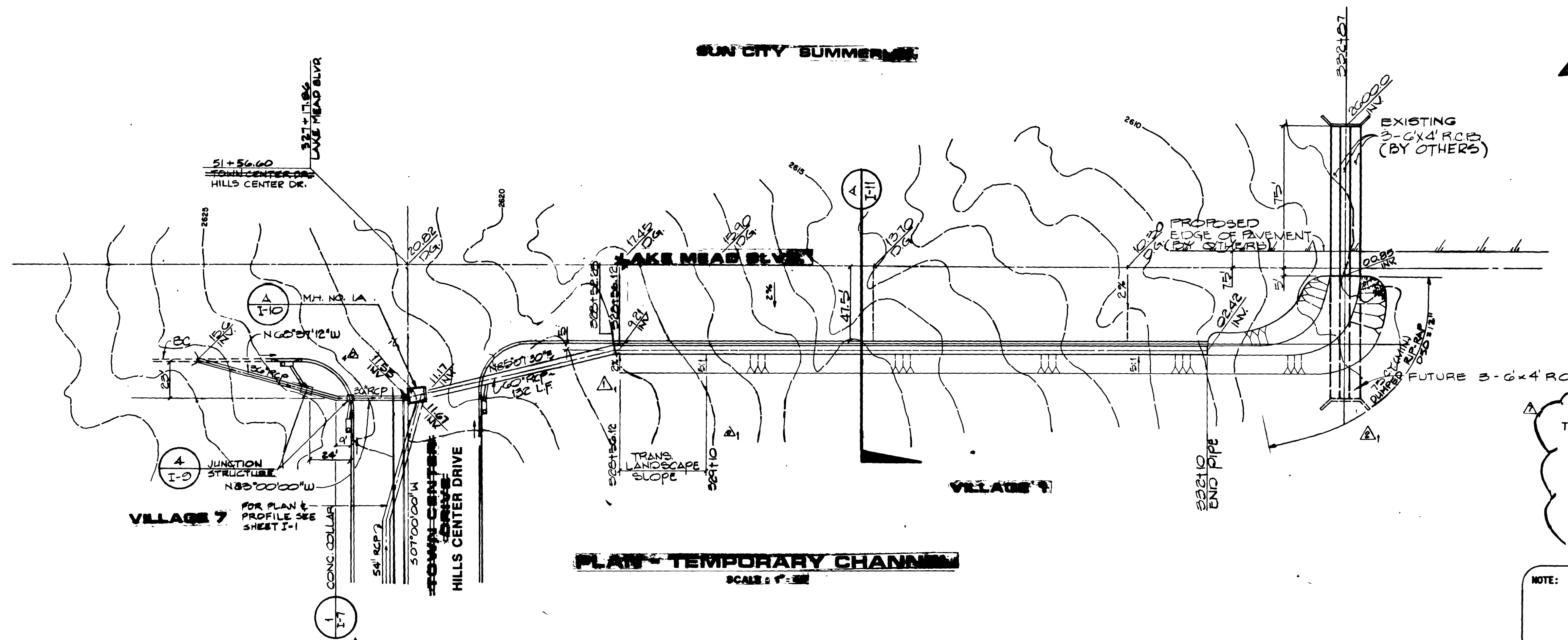
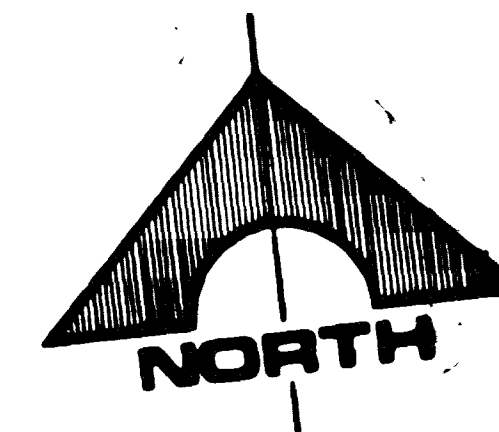


SUN CITY SUMMER



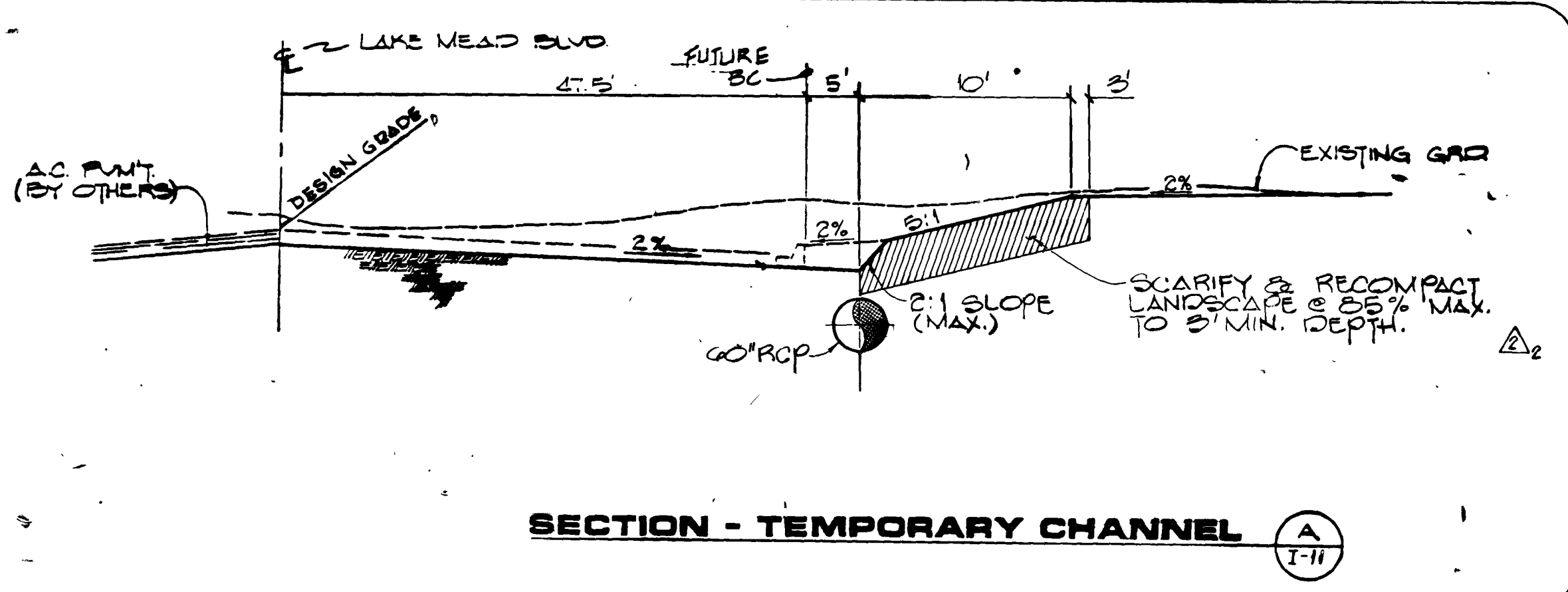
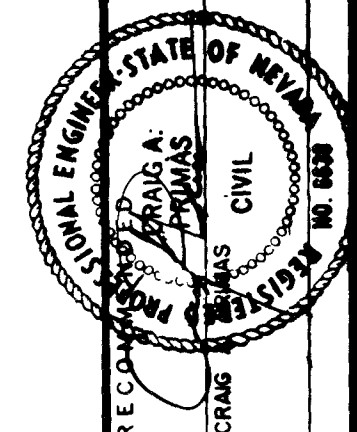
PLAN - TEMPORARY CHANNEL

SCALE: 1" = 20'

RECORD DRAWINGS
 THESE PLANS SHOW RECORD INFORMATION RECEIVED FROM:
 CONTRACTOR: WELLS CARGO INC.
 DATE: 6/19/90
 THIS DATA MAY OR MAY NOT REFLECT THE ACTUAL FIELD LOCATIONS. ALL DATA SHOULD BE CONFIRMED PRIOR TO USE ON DEVELOPMENT OR ENGINEERING PLANS.

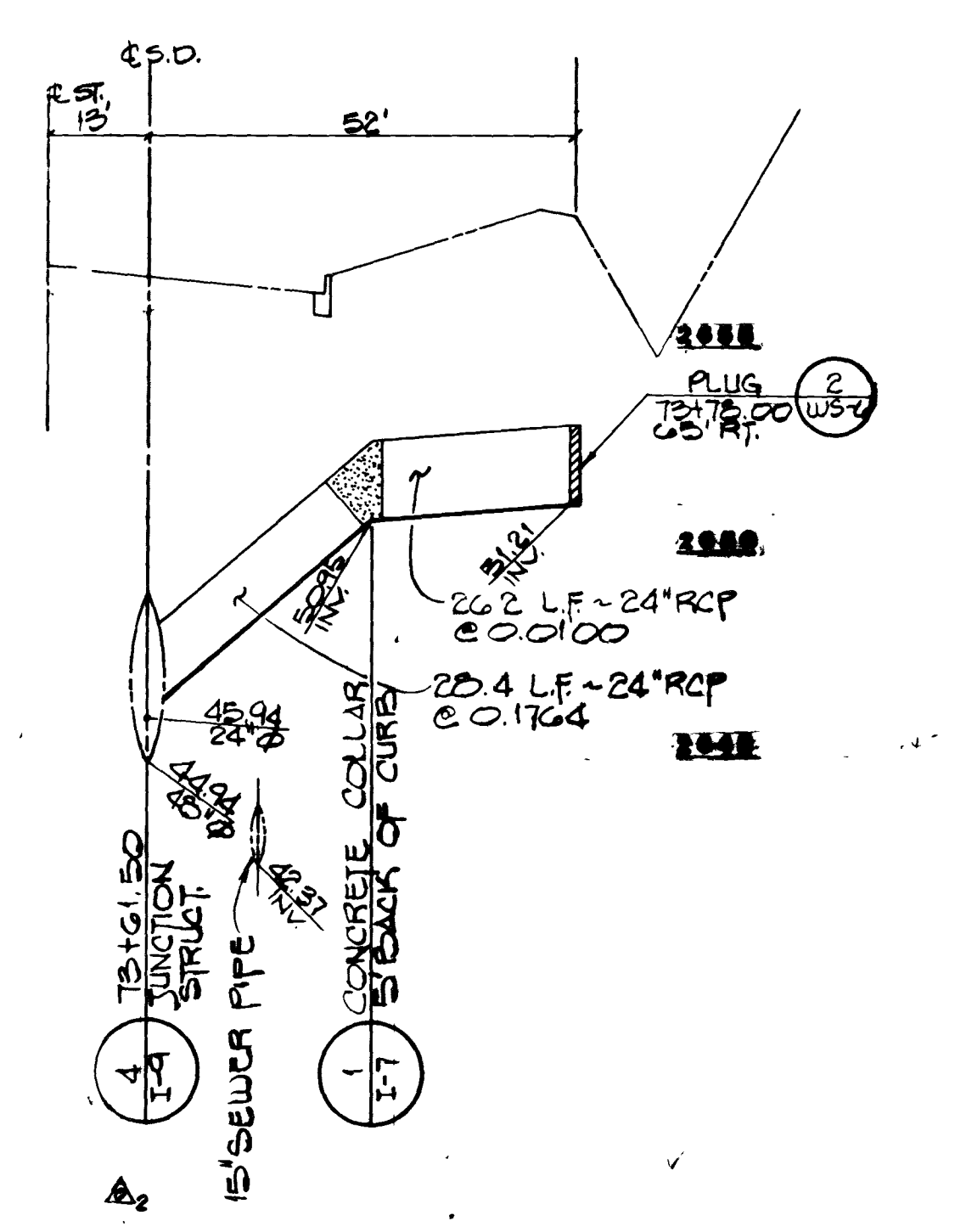
NOTE: THESE PLANS ARE FOR THE PURPOSE OF ROADWAY IMPROVEMENTS AND UTILITIES (PAVEMENT WITH BASE, CURB AND GUTTER, STORM DRAIN, WATER, SEWER, ETC.). ALL ROADWAY AND LANDSCAPE AREAS HAVE BEEN PREVIOUSLY ROUGH GRADED. ANY LIMITS OF ROUGH GRADING SHOWN ARE FOR REFERENCE ONLY. FOR SCOPE AND LIMITS OF ROUGH GRADING, SEE "TOWN CENTER DRIVE - ROUGH GRADING" PACKAGE. FOR FINISH GRADING OF LANDSCAPE AREAS, SEE LANDSCAPE PACKAGE BY SMA GROUP.

REV	DATE	DESCRIPTION
1	10/28/89	ISSUED FOR BIDDING
2	11/15/89	ISSUED FOR CONSTRUCTION
3	12/15/89	ISSUED PER SOU LETTER
4	1/15/90	ISSUED PER SOU LETTER
5	2/15/90	ISSUED PER SOU LETTER
6	3/15/90	ISSUED PER SOU LETTER
7	4/15/90	ISSUED PER SOU LETTER
8	5/15/90	ISSUED PER SOU LETTER
9	6/15/90	ISSUED PER SOU LETTER
10	7/15/90	ISSUED PER SOU LETTER
11	8/15/90	ISSUED PER SOU LETTER
12	9/15/90	ISSUED PER SOU LETTER
13	10/15/90	ISSUED PER SOU LETTER
14	11/15/90	ISSUED PER SOU LETTER
15	12/15/90	ISSUED PER SOU LETTER



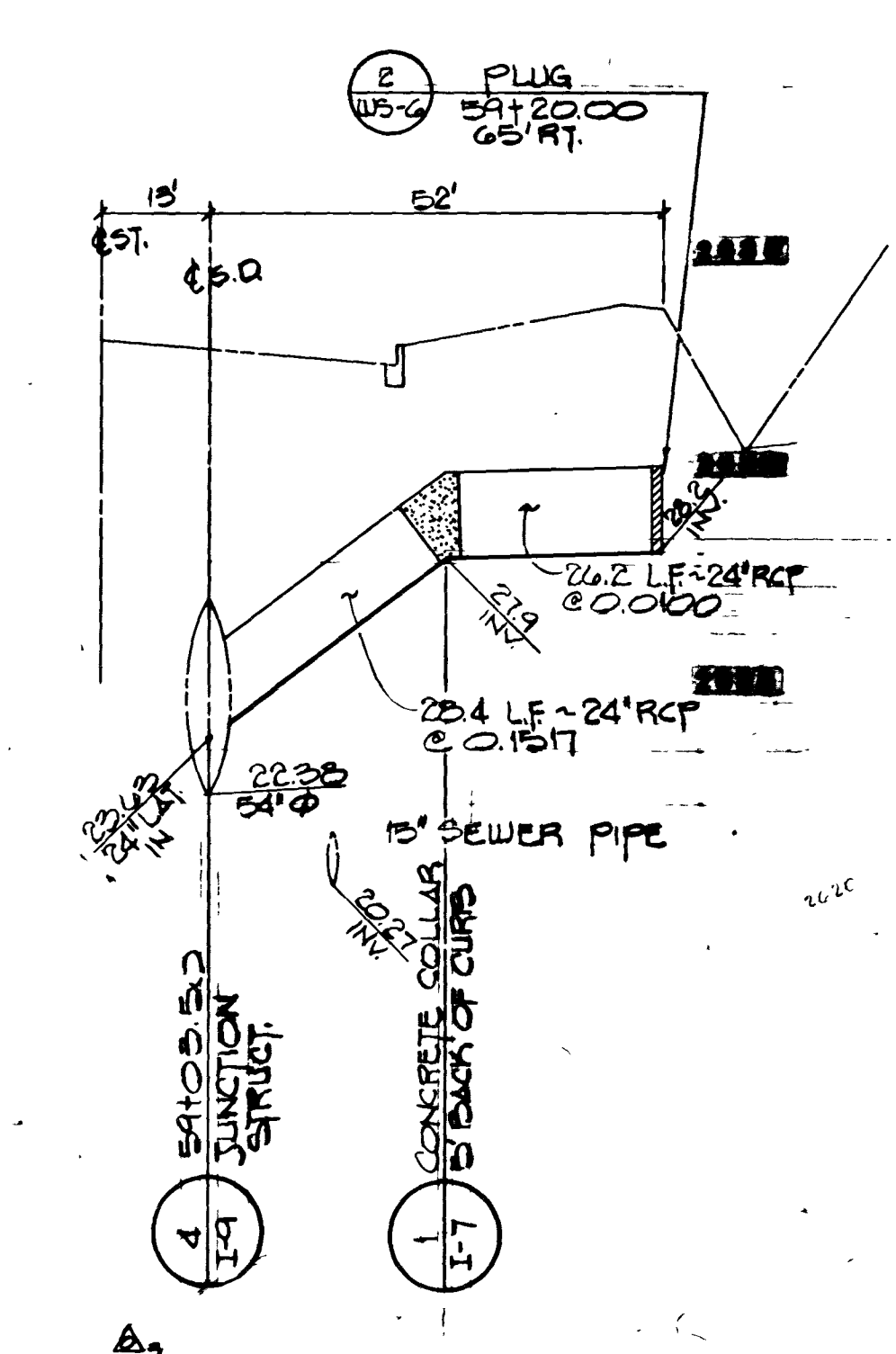
SECTION - TEMPORARY CHANNEL

SCALE: 1" = 10'



STORM DRAIN LATERAL PROFILE

SCALE: HORIZ. 1" = 20'
 VERT. 1" = 4'



G.C. WALLACE, INC.
 Engineering/Architecture

HOWARD HUGHES PROPERTIES
 HILLS TOWN CENTER DRIVE
 TEMPORARY DRAINAGE CHANNEL
 15' SEWER PIPE LATERAL

SHEET 14

2/12/89

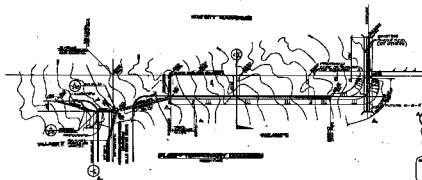
JOB NO. 1-888-0000

894 DIETERICH-POST 8552

1989

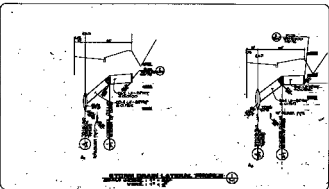
11-3-95

107-V1639-1



THESE DRAWINGS
 SHOW THE BEST DESIGN AND CONSTRUCTION FROM
 INFORMATION AVAILABLE TO DATE.
 THE CONTRACTOR SHALL BE RESPONSIBLE FOR
 VERIFYING THE ACCURACY OF THE INFORMATION
 PROVIDED TO HIM BY THE CLIENT.

THESE DRAWINGS ARE THE PROPERTY OF
 THE ARCHITECT AND SHALL BE KEPT
 IN THE ARCHITECT'S OFFICE.
 NO PART OF THESE DRAWINGS SHALL BE
 REPRODUCED OR TRANSMITTED IN ANY FORM OR BY ANY MEANS, ELECTRONIC OR MECHANICAL, INCLUDING PHOTOCOPYING, RECORDING, OR BY ANY INFORMATION STORAGE AND RETRIEVAL SYSTEM, WITHOUT THE WRITTEN PERMISSION OF THE ARCHITECT.



11/11/11

ARCHITECT: [Illegible]
 ENGINEER: [Illegible]
 CONTRACTOR: [Illegible]