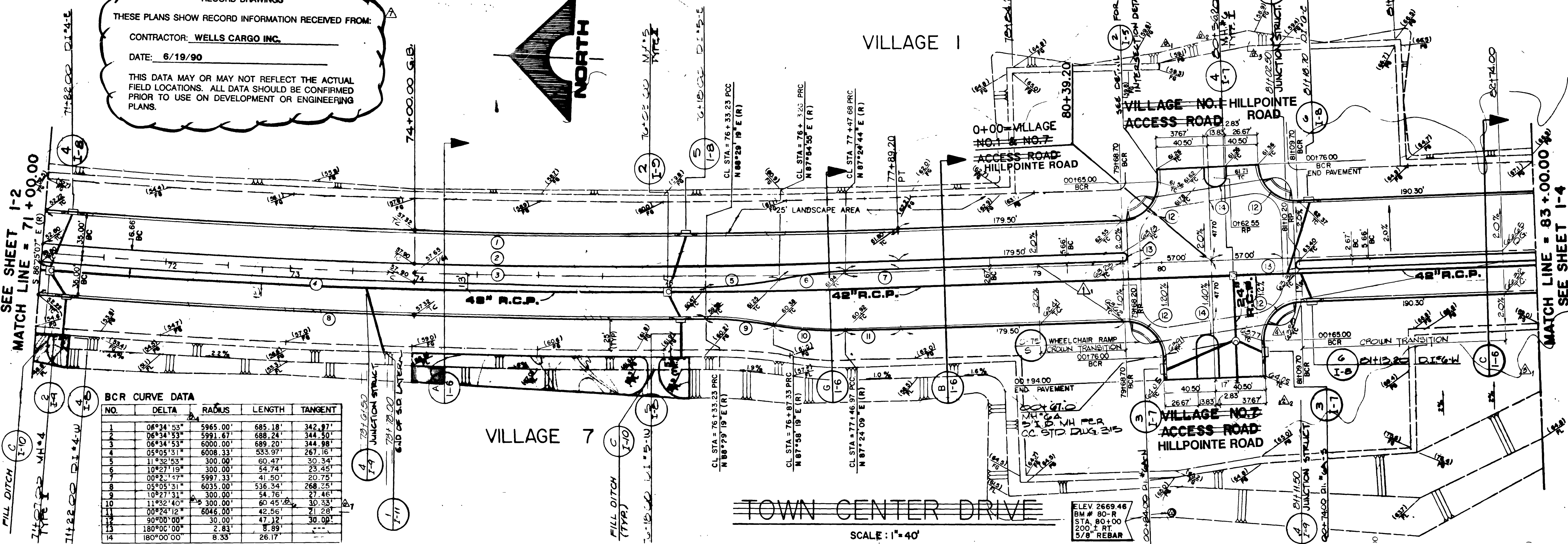
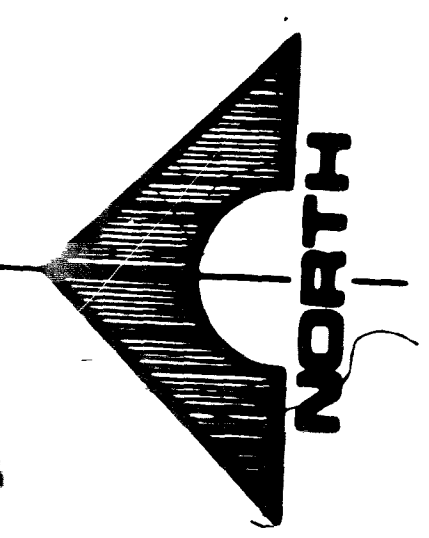


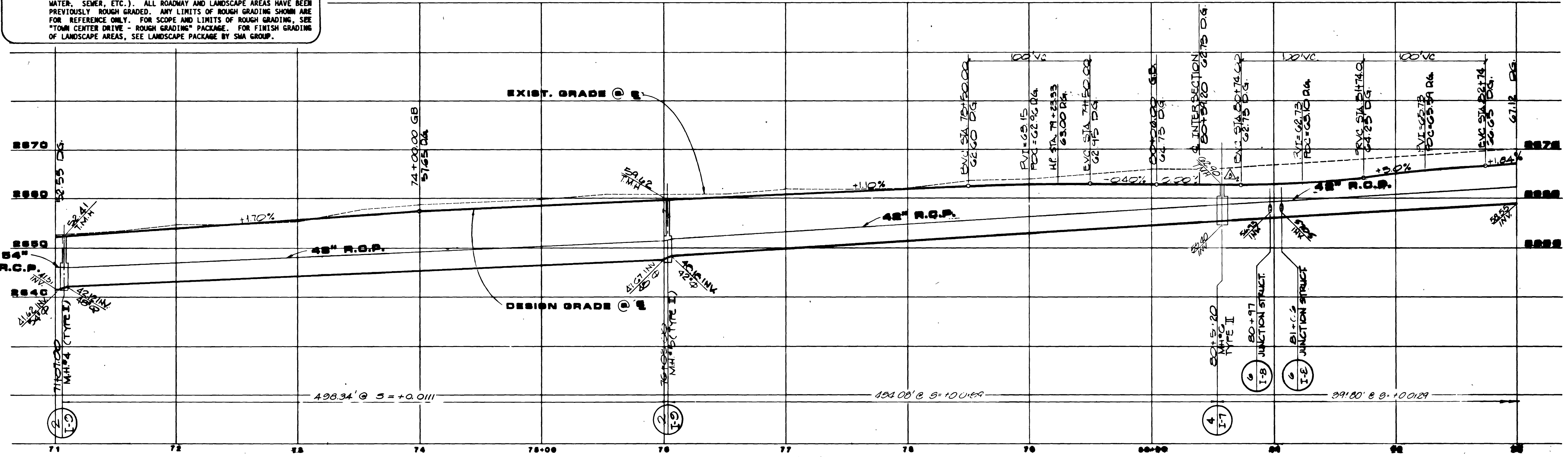
RECORD DRAWINGS
 THESE PLANS SHOW RECORD INFORMATION RECEIVED FROM:
 CONTRACTOR: WELLS CARGO INC.
 DATE: 6/19/90
 THIS DATA MAY OR MAY NOT REFLECT THE ACTUAL FIELD LOCATIONS. ALL DATA SHOULD BE CONFIRMED PRIOR TO USE ON DEVELOPMENT OR ENGINEERING PLANS.



BCR CURVE DATA

NO.	DELTA	RADIUS	LENGTH	TANGENT
1	06°34'53"	5965.00'	685.18'	342.97'
2	06°34'53"	5991.67'	688.24'	344.50'
3	06°34'53"	6000.00'	689.20'	344.98'
4	05°02'51"	6008.33'	533.97'	267.16'
5	11°32'53"	300.00'	60.47'	30.34'
6	10°27'19"	300.00'	54.74'	23.45'
7	00°2'17"	5997.33'	41.50'	20.75'
8	05°05'31"	6035.00'	536.34'	268.25'
9	10°27'31"	300.00'	54.76'	27.46'
10	11°32'40"	300.00'	60.45'	30.33'
11	00°24'12"	6046.00'	42.56'	21.28'
12	90°00'00"	30.00'	47.12'	30.00'
13	180°00'00"	2.83'	8.89'	
14	180°00'00"	8.33'	26.17'	

NOTE: THESE PLANS ARE FOR THE PURPOSE OF ROADWAY IMPROVEMENTS AND UTILITIES (PAVEMENT WITH BASE, CURB AND GUTTER, STORM DRAIN, WATER, SEWER, ETC.). ALL ROADWAY AND LANDSCAPE AREAS HAVE BEEN PREVIOUSLY ROUGH GRADED. ANY LIMITS OF ROUGH GRADING SHOWN ARE FOR REFERENCE ONLY. FOR SCOPE AND LIMITS OF ROUGH GRADING, SEE "TOWN CENTER DRIVE - ROUGH GRADING" PACKAGE. FOR FINISH GRADING OF LANDSCAPE AREAS, SEE LANDSCAPE PACKAGE BY SMA GROUP.



SCALE
 HORIZ.: 1"=40'
 VERT.: 1"=10'

STATE OF MICHIGAN
 ENGINEER
 G. C. WALLACE, INC.
 Engineering/Architecture
 1155 N. W. 11TH AVE. SUITE 200, GRAND RAPIDS, MI 49503
 SHEET 6
 2/12/89

JOB NO. 890388

1997

11-3-11

107-V1639-1

DESIGN PRINCIPLES
 1. MAINTAIN EXISTING OPEN SPACE BETWEEN BUILDINGS
 2. MAINTAIN EXISTING OPEN SPACE BETWEEN BUILDINGS
 3. MAINTAIN EXISTING OPEN SPACE BETWEEN BUILDINGS



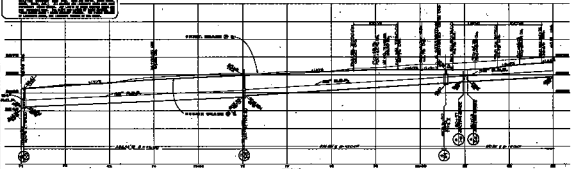
VILLAGE I

VILLAGE 7

TOWN CENTER DRIVE

HILLS CENTER DRIVE

1. MAINTAIN EXISTING OPEN SPACE BETWEEN BUILDINGS
 2. MAINTAIN EXISTING OPEN SPACE BETWEEN BUILDINGS
 3. MAINTAIN EXISTING OPEN SPACE BETWEEN BUILDINGS



1. MAINTAIN EXISTING OPEN SPACE BETWEEN BUILDINGS
 2. MAINTAIN EXISTING OPEN SPACE BETWEEN BUILDINGS
 3. MAINTAIN EXISTING OPEN SPACE BETWEEN BUILDINGS

1997

11-3-97

1. MAINTAIN EXISTING OPEN SPACE BETWEEN BUILDINGS
 2. MAINTAIN EXISTING OPEN SPACE BETWEEN BUILDINGS
 3. MAINTAIN EXISTING OPEN SPACE BETWEEN BUILDINGS