

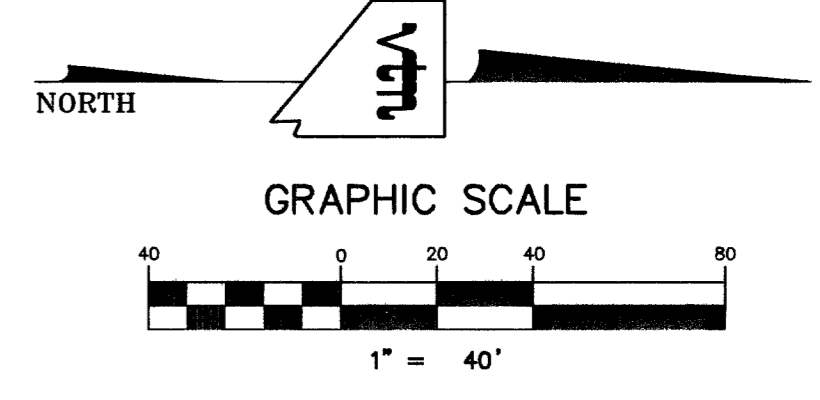
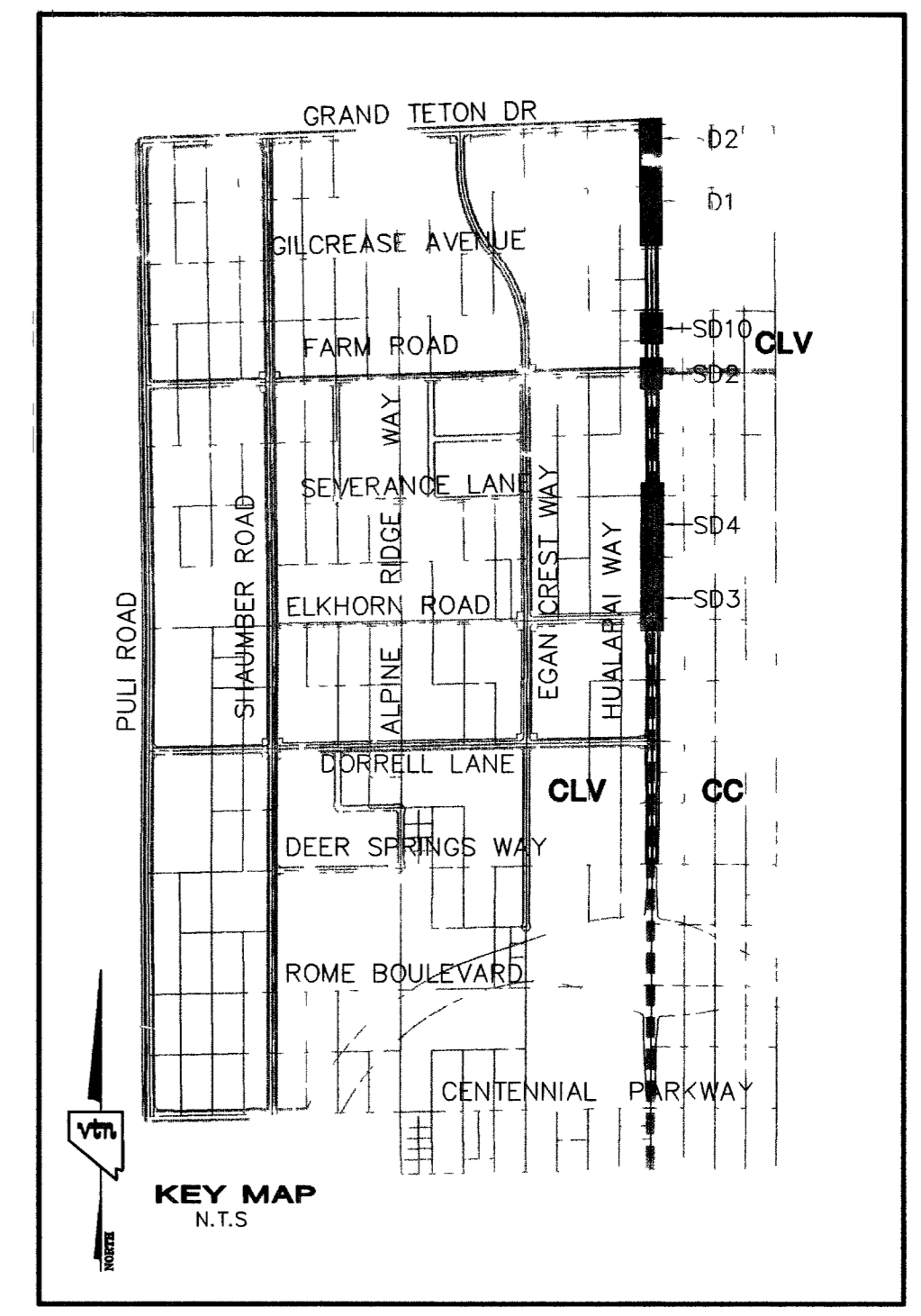
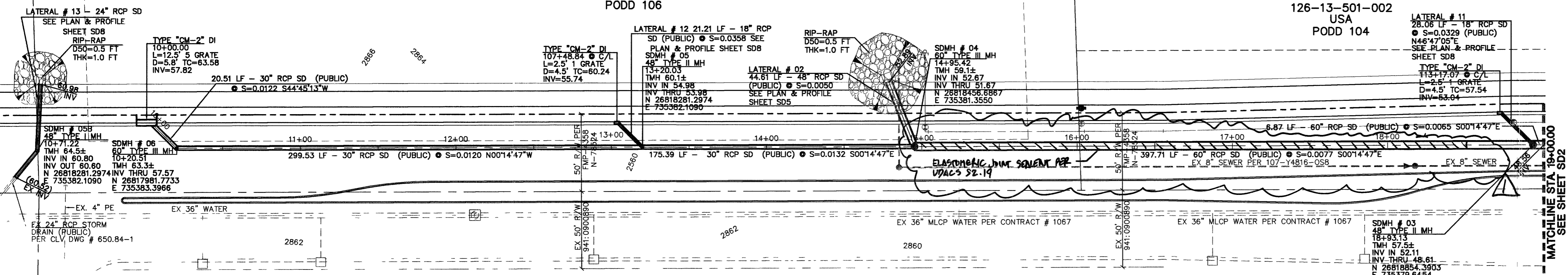
126-13-501-008
DANVILLE LAND INVESTMENTS L L C
PODD 106

126-13-501-002
USA
PODD 104

125-18-101-006
BEAZER HOMES HOLDINGS CORP

125-18-101-002
BEAZER HOMES HOLDINGS CORP

HUALAPAI WAY (PUBLIC)



CONTRACTOR NOTE
CONTRACTOR SHALL VERIFY HORIZONTAL AND VERTICAL LOCATION OF EXISTING UTILITIES AND NOTIFY THE DESIGN ENGINEER IMMEDIATELY OF ANY DISCREPANCIES PRIOR TO CONSTRUCTION.

NOTE :
STRUCTURAL CALCULATIONS FOR ALL NON-STANDARD DRAINAGE FACILITIES, SUCH AS JUNCTION BOXES AND OVERFLOW STRUCTURES, WILL BE PROVIDED WITH THE STRUCTURAL CALCULATIONS FOR THE RCA STORM DRAINS.

Call before you Underground
1-702-455-7511
CLARK COUNTY TRAFFIC OPERATIONS AND 1-702-229-9611
LAS VEGAS AREA COMPUTERIZED TRAFFIC SYSTEM

Call before you Dig
1-800-227-2600

Call before you Overhead
1-702-227-2929

BASIS OF BEARINGS
THE BASIS OF BEARINGS FOR THIS PROJECT IS NORTH 00°08'16" EAST BEING THE EAST LINE OF THE NORTHWEST QUARTER (NE 1/4) OF THE SECTION 24, TOWNSHIP 19 SOUTH, RANGE 59 EAST, M.D.M., CLARK COUNTY, NEVADA, AS SHOWN ON A RECORD OF SURVEY ON FILE IN THE CLARK COUNTY, NEVADA, RECORDER'S OFFICE IN FILE 123 AT PAGE 32.

PROJECT BENCHMARK
PROJECT DATUM: NORTH AMERICAN VERTICAL DATUM OF 1988 (NAVD88)
CLARK COUNTY VERTICAL CONTROL: 1000-6N6
NAVD88 ELEVATION: 787.794 METERS (2584.62 FEET)

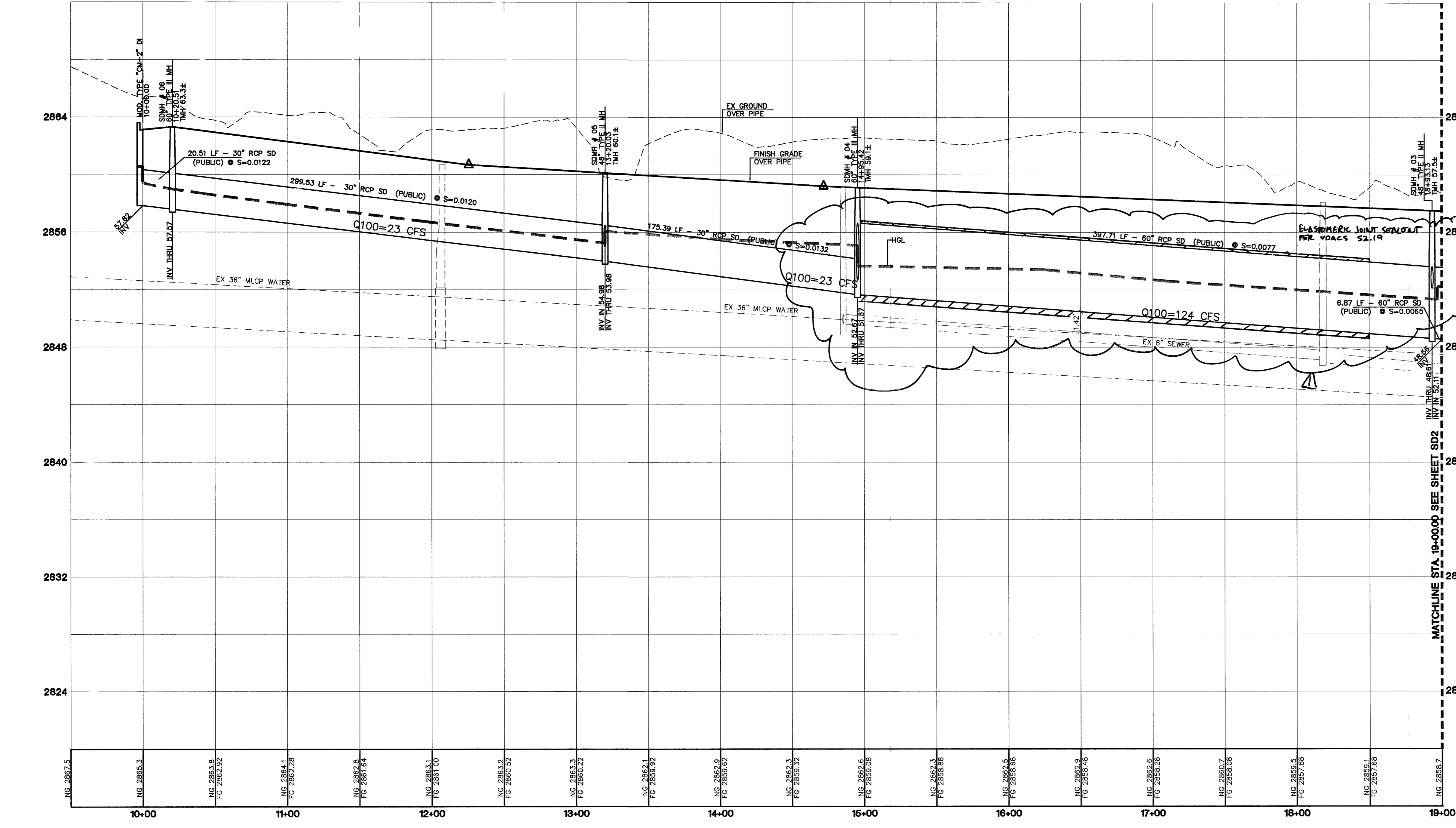
RIVET AND SQUARE ALUMINUM PLATE IN A CONCRETE CYLINDER, LOCATED 25' SOUTH & 50' EAST OF GRAND CANYON DRIVE AND RED COACH AVENUE, 1' WEST OF ELECTRICAL VAULT.

CITY OF LAS VEGAS BENCHMARK
DATUM: NORTH AMERICAN VERTICAL DATUM OF 1988 (NAVD88)
CITY OF LAS VEGAS BENCHMARK: 8LV99-13SES
NAVD88 ELEVATION: 869.606 METERS (2853.03 FEET)

RIVET AND PLATE IN CONCRETE CYLINDER NW CORNER OF HUALAPAI AND ELKHORN

NOTE: ADD 0.34' TO ABOVE CITY OF LAS VEGAS BENCHMARK 8LV99-13SES TO MATCH ORIGINAL PROJECT BENCHMARK, CLARK COUNTY BENCHMARK 1000-6N6 (2584.62 FEET) AS SHOWN ON RECORD OF SURVEY FILE 124 PAGE 34.

I CERTIFY THAT THIS PLAN IS IN CONFORMANCE WITH THE APPROVED DRAINAGE STUDY ON FILE AT CITY OF LAS VEGAS FOR THIS PROJECT. DS3576
DANIEL J. HOOD N. 12811 DATE 8/22/06



CLIFFS EDGE LLC
3435 CLIFF SHADOWS PARKWAY, SUITE 290
LAS VEGAS, NEVADA 89129
(702) 777-1221

STORM DRAIN PLAN & PROFILE
HUALAPAI WAY
STA. 10+00.00 TO 19+00.00

CLIFFS EDGE / PROVIDENCE
HUALAPAI WAY
DEER SPRINGS TO GRAND TETON

SCALE: 1"=40' HORIZ. VERT. 1"=4'

PROJECT NO.: 5869

EXPIRES: 08-30-07

PROFESSIONAL ENGINEER STATE OF NEVADA
DANIEL J. HOOD
NO. 12811

SHEET
SD1
13 OF 29 SHEETS
DRAWING NO. 107Y4816-HWY

826851 83041

HT# 05-19169