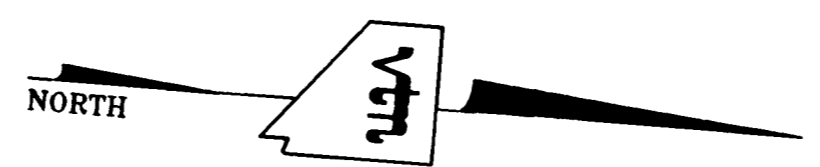


PROFILE SCALE:
HORIZ. 1" = 40'
VERT. 1" = 4'

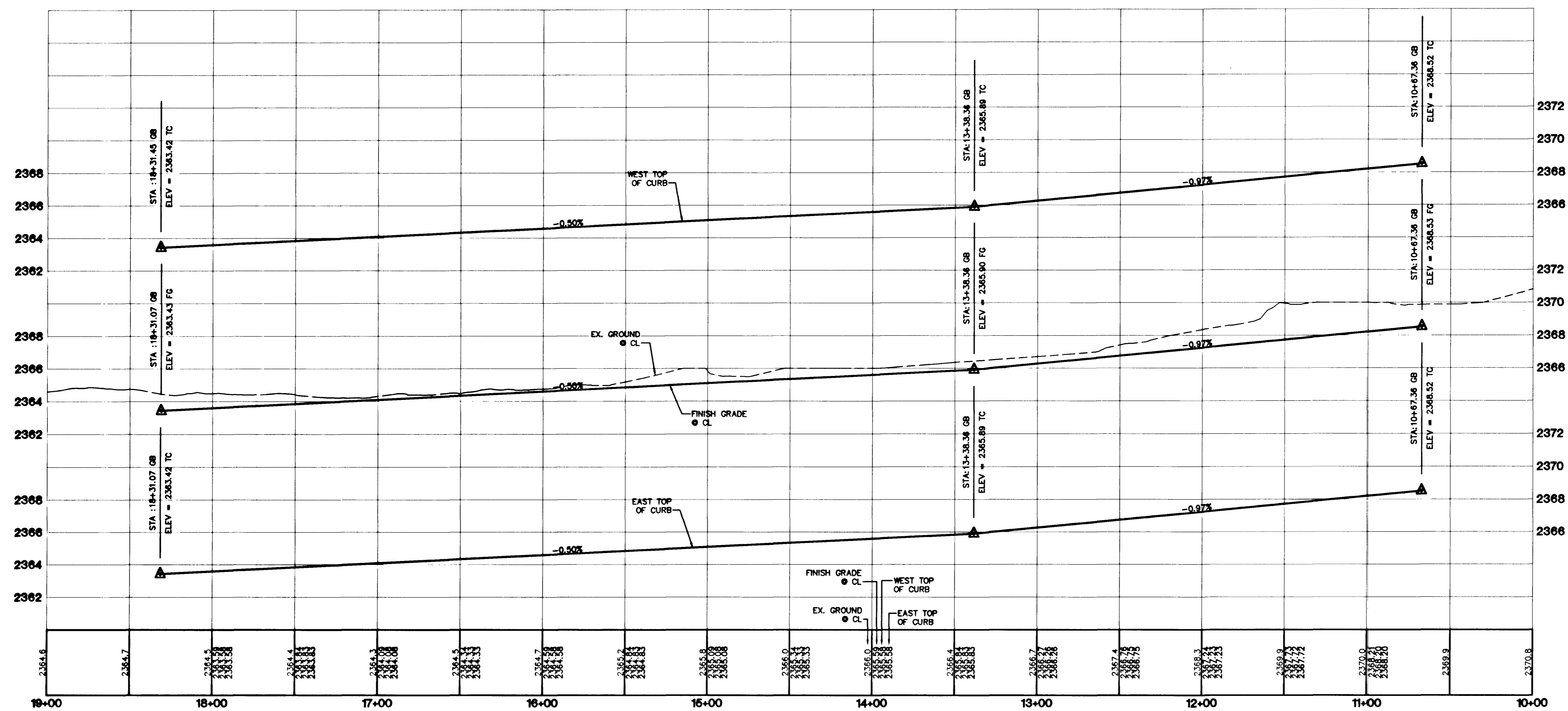


NOTE:
ALL PRIVATE STREETS ARE P.U.E.A. CLV PUBLIC SEWER EASEMENTS
AND PUBLIC DRAINAGE EASEMENTS TO BE PRIVATELY MAINTAINED

NO.	RADIUS	DELTA	LENGTH	TANGENT
C1	52.00'	49°02'27"	44.51'	23.72'
C2	52.00'	51°16'42"	46.54'	24.96'
C3	52.00'	38°22'14"	34.82'	18.09'
C4	30.00'	88°30'53"	46.35'	29.23'
C5	52.00'	138°41'23"	125.87'	137.94'
C6	20.00'	91°29'07"	31.93'	20.53'
C7	52.00'	42°08'08"	38.24'	20.03'
C8	52.00'	53°34'03"	48.62'	26.25'
C9	52.00'	46°45'22"	42.43'	22.48'
C10	54.00'	25°05'15"	23.64'	12.01'
C11	30.00'	92°17'02"	48.32'	31.22'
C12	52.00'	142°27'33"	129.29'	153.01'
C13	20.00'	87°42'58"	30.62'	19.22'
C14	20.00'	92°17'02"	32.21'	20.81'
C15	34.00'	51°25'32"	30.52'	16.37'
C16	51.00'	96°25'29"	85.83'	57.07'
C17	51.00'	45°00'03"	40.06'	21.13'
C18	51.00'	54°38'15"	48.63'	26.34'
C19	51.00'	86°47'17"	77.25'	48.22'
C20	51.00'	282°51'05"	251.77'	48.22'
C21	25.00'	88°30'53"	38.62'	24.36'

DISCLAIMER NOTE
UTILITY LOCATIONS SHOWN HEREON ARE APPROXIMATE ONLY. IT SHALL BE THE CONTRACTOR'S RESPONSIBILITY TO DETERMINE THE EXACT HORIZONTAL AND VERTICAL LOCATION OF ALL EXISTING UNDERGROUND AND OVERHEAD UTILITIES PRIOR TO COMMENCING CONSTRUCTION. NO REPRESENTATION IS MADE THAT ALL EXISTING UTILITIES ARE SHOWN HEREON. THE ENGINEER ASSUMES NO RESPONSIBILITY FOR UTILITIES NOT SHOWN OR UTILITIES NOT SHOWN IN THEIR PROPER LOCATION.

- CONSTRUCTION NOTES**
- (A) CONSTRUCT "L" CURB & GUTTER PER STD. # 216
 - (B) CONSTRUCT SIDEWALK PER STD. # 234
 - (C) CONSTRUCT CROSS GUTTER PER STD. # 228
 - (D) CONSTRUCT SIDEWALK RAMP PER STD. # 235
 - (E) CONSTRUCT SIDEWALK DRAIN PER STD. # 236
 - (F) EDGE OF PAVEMENT
 - (G) CONSTRUCT "A" TYPE ISLAND CURB PER STD. # 219



PROJECT BENCHMARK
PROJECT DATUM: NAVD88
(OLD) CITY OF LAS VEGAS BENCHMARK 11V90-13NES NAVD88 ELEVATION: 10,960.8 METERS (2332.54 FEET)
PROJECT DESIGNED USING OLD BENCHMARK
(NEW) CITY OF LAS VEGAS BENCHMARK 11V90-13NES NAVD88 ELEVATION: 710,918.1 METERS (2332.40 FEET)
(-0.14 FEET) TO GET NEW PUBLISHED DATUM
ONLY BM 413148, NAVD 88 ELEV=710,953 METERS (2332.52 FEET) DIAMETER CONCRETE MONUMENT 77 FEET SOUTH & 54 FEET WEST OF N.E. CORNER SEC. 13T19R60E 10' EAST OF LARGE POWER POLE.

BASIS OF BEARINGS
THE BASIS OF BEARINGS FOR THIS PROJECT IS GRID NORTH AS DEFINED BY THE NEVADA COORDINATE SYSTEM OF 1983 (NCS83), EAST ZONE (2701), DETERMINED BY CLARK COUNTY GIS CONTROL POINTS 802, 803, 804 AND 805, AS SHOWN ON A RECORD OF SURVEY ON FILE IN THE CLARK COUNTY, NEVADA, RECORDER'S OFFICE, IN BOOK 88 OF SURVEYS, AT PAGE 53.

Avoid cutting underground utility lines. It's costly.
Call before you Dig
1-800-227-2600

Avoid overhead power line contact. It's costly.
Call before you Overhead
1-702-593-6111

7	6	5	4	3	2	1	REV	DATE	BY

CITY OF LAS VEGAS
2727 SOUTH RAINBOW BOULEVARD LAS VEGAS, NEVADA 89146-5148
760 PHOT BOULEVARD, SUITE 1
LAS VEGAS, NV 89119
PH: (702) 875-7550 FAX (702) 362-2597
consulting engineers • planners • land surveyors

KB HOME
760 PHOT BOULEVARD, SUITE 1
LAS VEGAS, NV 89119
(702) 814-2500

STREET PLAN AND PROFILE
VOSS TRAIL STREET

IRON MOUNTAIN RANCH
VILLAGE 8
UNIT 2

DRAWN BY: MKD JULY 2002
DESIGNED BY: JULY 2002
CHECKED BY: KFN JULY 2002
PROJECT NO: 8027-02
SCALE: 1"=40' HORIZ. VERT.

PROFESSIONAL ENGINEER
KENNETH NIMOLSON
CIVIL
NO. 70539 NOV 15 10
EXPIRES 12-31-03

SHEET
S3
12 OF 24 SHEETS
DRAWING NO.
1074-4604-B-2

48343