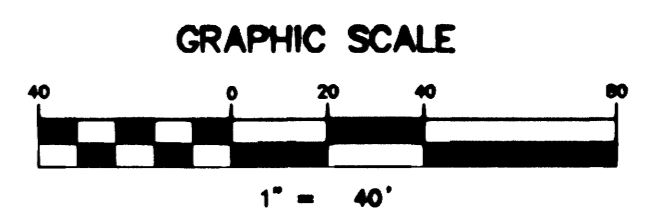


VILLAGE 7 - KEY MAP
NOT TO SCALE

PROFILE SCALE:
HORIZ. 1" = 40'
VERT. 1" = 4'

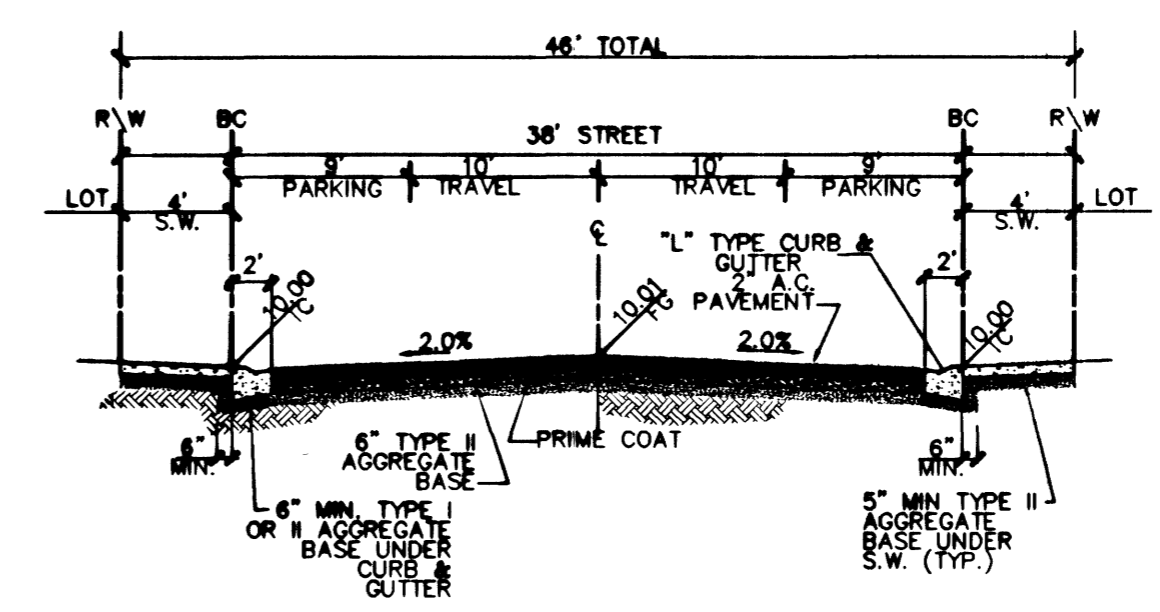
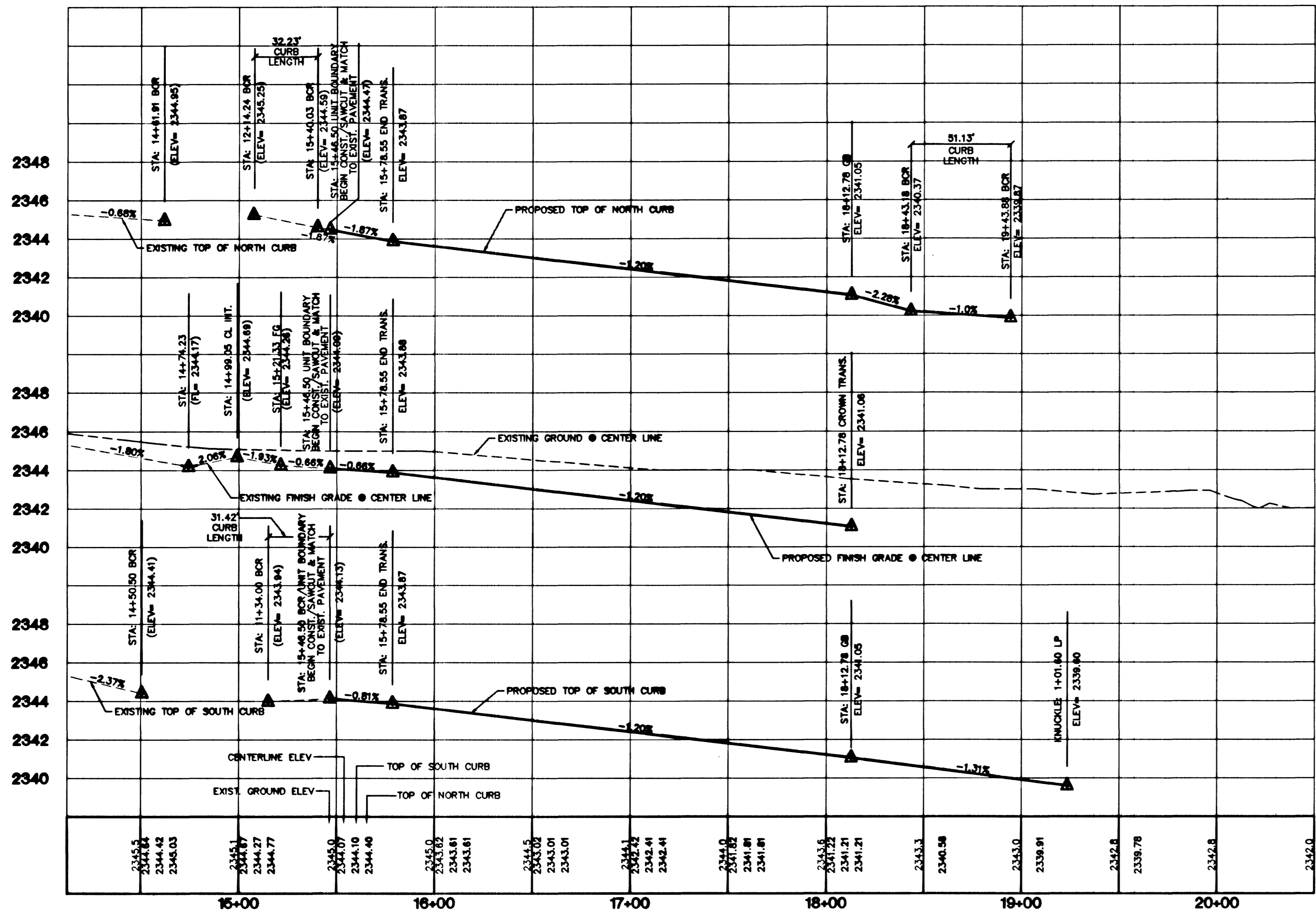


SIDEWALK RAMPS TABLE
PER STD. DWG 235 CASE 1

NO.	DM "A"	DM "B"	CASE
1	8.0'	8.0'	I
2	8.5'	4.5'	I

CURVE TABLE

CURVE	LENGTH	RADIUS	DELTA	TANGENT
C1	35.19	34.00	83°00'40"	35.84
C2	31.42	20.00	80°00'00"	20.00
C3	31.42	20.00	80°00'00"	20.00
C4	31.42	20.00	80°00'00"	20.00
C5	19.85	23.50	48°23'22"	10.56
C6	195.64	40.50	278°46'45"	35.97
C7	19.85	23.50	48°23'22"	10.56
C8	31.42	20.00	80°00'00"	20.00
C9	51.14	34.00	86°10'57"	31.81
C10	23.64	54.00	25°05'15"	12.01
C11	123.75	52.00	136°21'28"	129.87
C12	23.64	54.00	25°05'15"	12.01
C13	31.42	20.00	80°00'00"	20.00
C14	47.12	30.00	80°00'00"	30.00
C15	47.12	30.00	80°00'00"	30.00
C16	31.42	20.00	80°00'00"	20.00
C17	23.64	54.00	25°05'15"	12.01
C18	129.95	52.00	143°11'11"	156.26
C19	23.64	54.00	25°05'15"	12.01
C20	23.18	25.00	33°07'48"	12.50
C21	12.57	4.00	180°00'00"	INFINITE
C22	12.57	4.00	180°00'00"	INFINITE
C23	12.57	4.00	180°00'00"	INFINITE
C24	12.57	4.00	180°00'00"	INFINITE
C25	45.13	30.00	86°10'57"	28.06
C26	48.12	30.00	82°48'40"	32.06
C27	21.01	219.00	5°29'51"	10.51
C28	17.37	181.00	5°29'51"	8.69
C29	48.70	30.00	83°00'40"	31.62



TYPICAL 46' STREET SECTION (PUBLIC)
(N.T.S.)

PROJECT BENCHMARK

PROJECT DATUM: NAVD88
CITY OF LAS VEGAS BENCHMARK 11V90-13NES
NAVD88 ELEVATION: 710.9608 METERS (2332.54 FEET)
ONLY BM 413148, NAVD 88 ELEV=710.953 METERS (2332.52 FEET) IS A 77 FEET DIAMETER CONCRETE MONUMENT LOCATED SOUTH OF THE CORNER SEC. 13T19R60E TO EAST OF LARGE POWER POLE.

BASE OF BEARINGS

THE BASIS OF BEARINGS FOR THIS PROJECT IS GRID NORTH AS DEFINED BY THE NEVADA COORDINATE SYSTEM OF 1983 (NCS83) EAST ZONE (2701), DETERMINED BY CLARK COUNTY GIS CENTER 807, 808 AND 805, AS SHOWN ON A RECORD OF SURVEY ON FILE IN THE CLARK COUNTY, NEVADA, RECORDER'S OFFICE, IN BOOK 88 OF SURVEYS, AT PAGE 53.

CONSTRUCTION NOTES

- (A) CONSTRUCT "L" CURB & GUTTER PER STD. # 218
- (B) CONSTRUCT SIDEWALK PER STD. # 234
- (C) CONSTRUCT CROSS GUTTER PER STD. # 228
- (D) CONSTRUCT SIDEWALK RAMP PER STD. # 235
- (E) CONSTRUCT SIDEWALK DRAIN PER STD. # 236
- (F) CUT & MATCH EXIST. A.C.
- (G) CONSTRUCT "A" TYPE ISLAND CURB PER STD. # 219

NOTE: CONTRACTOR SHALL VERIFY HORIZONTAL AND VERTICAL LOCATION OF EXISTING UTILITIES AND NOTIFY THE DESIGN ENGINEER IMMEDIATELY OF ANY DISCREPANCIES PRIOR TO CONSTRUCTION.

Avoid cutting underground utility lines. If contact:
Call before you Dig
1-800-227-2600

Avoid overhead power line contact:
Call before you OVERHEAD
1-702-593-6111

CITY OF LAS VEGAS

KB HOME
STREET PLAN & PROFILE
HOSTETTLER AVENUE
STA: 14+98.06 - 18+26.30

IRON MOUNTAIN RANCH
VILLAGE 7
UNIT 3

DRAWN BY: KDS / FPN
DESIGNED BY: RUS
CHECKED BY: MKN
PROJECT NO: 9920-3

DEC '01
DEC '01
DEC '01

SCALE: 1"=40' HORIZ.
1"=4' VERT.

PROFESSIONAL ENGINEER
STATE OF NEVADA
No. 10539
CIVIL
EXPIRES 12-31-03

SHEET
ST3
12 OF 21 SHEETS
DRAWING NO.
107-4604-7-3

2727 SOUTH RAINBOW BOULEVARD LAS VEGAS, NEVADA 89146-5148
PH. (702) 873-7550 FAX (702) 362-2597
PLANNERS & LAND SURVEYORS
CONSULTING ENGINEERS