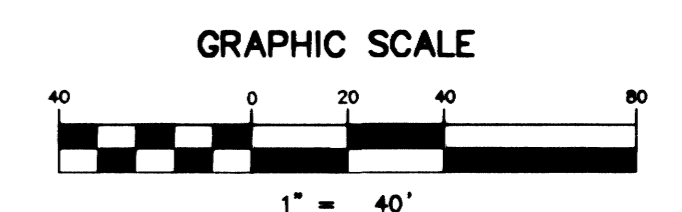


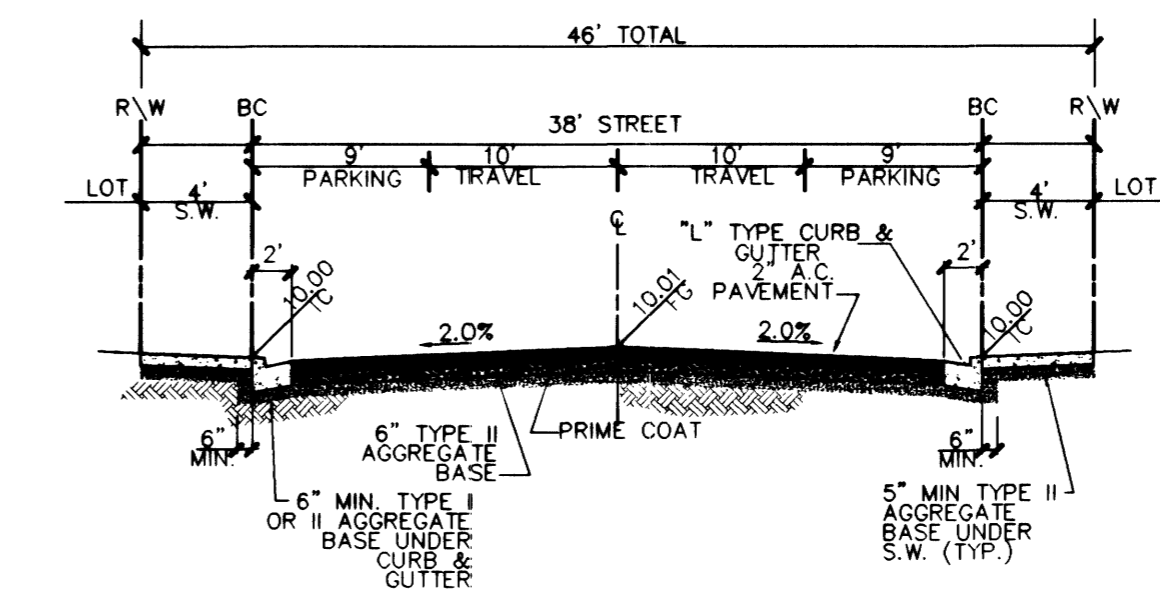
VILLAGE 7 - KEY MAP
NOT TO SCALE

PROFILE SCALE:
HORIZ. 1" = 40'
VERT. 1" = 4'



SIDEWALK RAMP TABLE
PER STD. DWG 235 CASE I

NO.	DIM "A"	DIM "B"	CASE
1	6.0'	6.0'	I
2	9.5'	4.5'	I

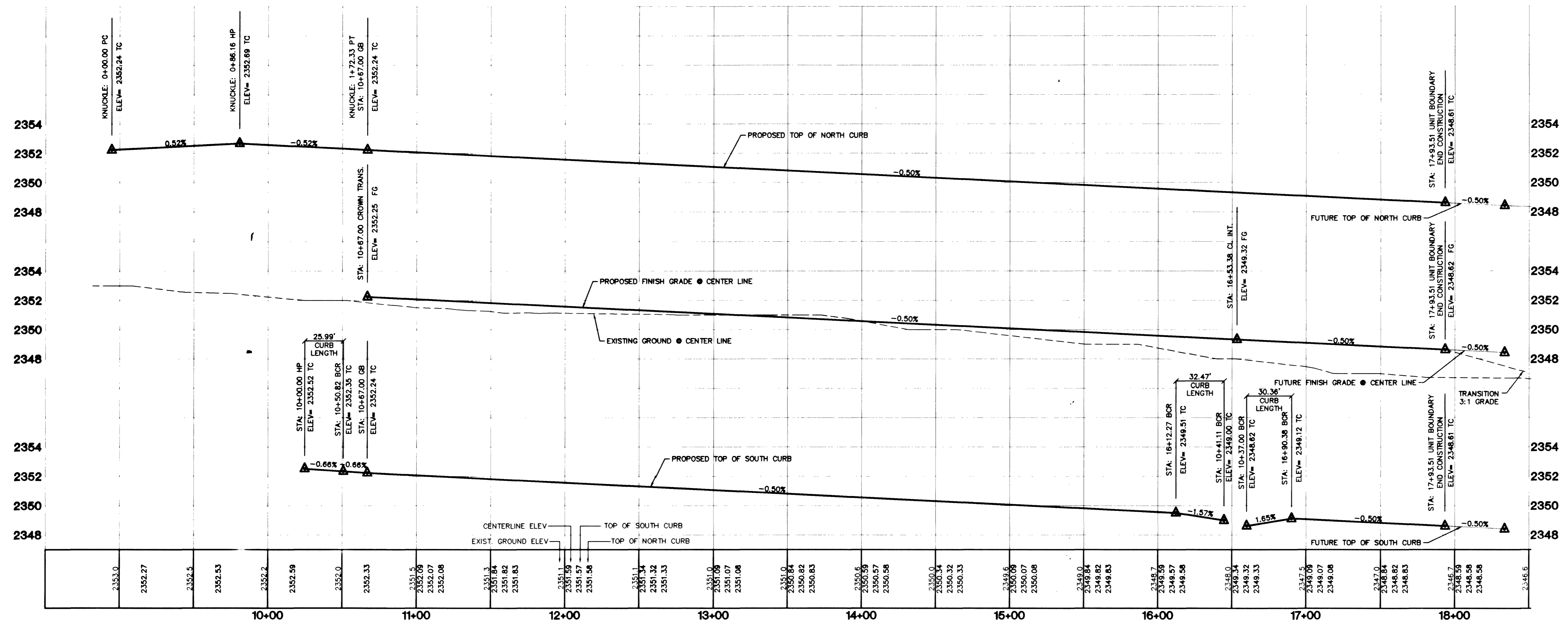


TYPICAL 46' STREET SECTION (PUBLIC)
(N.T.S.) STD DWG NO. 207

CURVE TABLE

CURVE	LENGTH	RADIUS	DELTA	TANGENT
C1	23.64	54.00	25°05'15"	12.01
C2	125.04	52.00	137°48'24"	134.67
C3	23.64	54.00	25°05'15"	12.01
C4	51.98	34.00	87°35'53"	32.60
C5	32.47	20.00	93°00'40"	21.08
C6	30.36	20.00	86°59'20"	18.98
C7	30.58	20.00	87°35'53"	19.18
C8	32.28	20.00	92°24'07"	20.86
C9	58.32	319.00	10°28'31"	29.24
C10	51.37	281.00	10°28'31"	25.76
C11	51.37	281.00	10°28'31"	25.76
C12	58.32	319.00	10°28'31"	29.24
C13	30.33	20.00	86°53'22"	18.94
C14	78.06	219.00	20°25'22"	39.45
C15	37.04	20.00	106°06'49"	26.60
C16	75.82	131.00	33°09'36"	39.00
C17	76.22	169.00	25°50'23"	38.77
C18	21.01	219.00	5°29'51"	10.51
C19	17.37	181.00	5°29'51"	8.69
C20	31.01	20.00	88°50'43"	19.60
C21	32.28	20.00	92°24'07"	20.86
C22	31.77	20.00	91°01'12"	20.36
C23	30.58	20.00	87°35'53"	19.18
C24	45.55	30.00	86°59'40"	28.47
C25	48.70	30.00	93°00'40"	31.62

WHISTLING ACRES AVENUE
(PUBLIC)



PROJECT BENCHMARK
PROJECT DATUM: NAVD88
CITY OF LAS VEGAS BENCHMARK 1LV90-13NES
NAVD88 ELEVATION: 710.9608 METERS (2332.54 FEET)
ONLY BM 413148, NAVD 88 ELEV=710.953 METERS (2332.52 FEET) DIAMETER CONCRETE MONUMENT 77 FEET SOUTH & 54 FEET WEST OF NE CORNER SEC. 13T19R60E TO EAST OF LARGE POWER POLE.

BASIS OF BEARINGS
THE BASIS OF BEARINGS FOR THIS PROJECT IS GRID NORTH AS DEFINED BY THE NEVADA COORDINATE SYSTEM OF 1983 (NCS83), ZONE 12T01, DETERMINED BY CLARK COUNTY CONTROL POINTS 802, 803, AND 805, AS SHOWN ON A RECORD OF SURVEY ON FILE IN THE CLARK COUNTY, NEVADA RECORDER'S OFFICE, IN BOOK 88 OF SURVEYS, AT PAGE 83.

- CONSTRUCTION NOTES**
- (A) CONSTRUCT "L" CURB & GUTTER PER STD. # 216
 - (B) CONSTRUCT SIDEWALK PER STD. # 234
 - (C) CONSTRUCT CROSS GUTTER PER STD. # 228
 - (D) CONSTRUCT SIDEWALK RAMP PER STD. # 235
 - (E) CONSTRUCT SIDEWALK DRAIN PER STD. # 236
 - (F) CUT & MATCH EXIST. A.C.
 - (G) CONSTRUCT "A" TYPE ISLAND CURB PER STD. # 219

NOTE: CONTRACTOR SHALL VERIFY HORIZONTAL AND VERTICAL LOCATION OF EXISTING UTILITIES AND NOTIFY THE DESIGN ENGINEER IMMEDIATELY OF ANY DISCREPANCIES PRIOR TO CONSTRUCTION.

Call before you Dig
1-800-227-2600

Call before you OVERHEAD
1-702-593-6111

KB HOME
780 EAST RAINBOW BLVD. F
LAS VEGAS, NEVADA 89115
(702) 614-2500

STREET PLAN & PROFILE
WHISTLING ACRES AVENUE
STA: 10+00.00 - 17+93.51

IRON MOUNTAIN RANCH
VILLAGE 7
UNIT 2

DRAWN BY: KUS / FR
DESIGNED BY: RMS
CHECKED BY: KIN
PROJECT NO: 5920-2

DEC 01
DEC 01
DEC 01

SCALE: 1"=40' HORIZ
1"=4' VERT.

PROFESSIONAL ENGINEER
KENNETH J. HANSEN
CIVIL
NO. 10539
4-10-07

SHEET
ST1
11 of 29 SHEETS
DRAWING NO.
1074-4604-7-2

1: 5920 UNIT2 5920S102.DWG(S1)