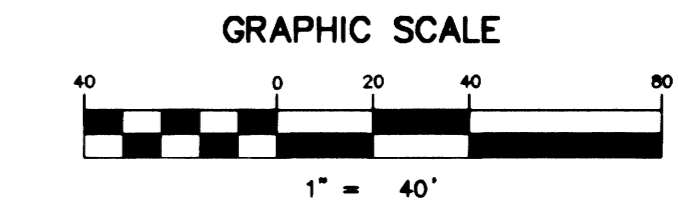


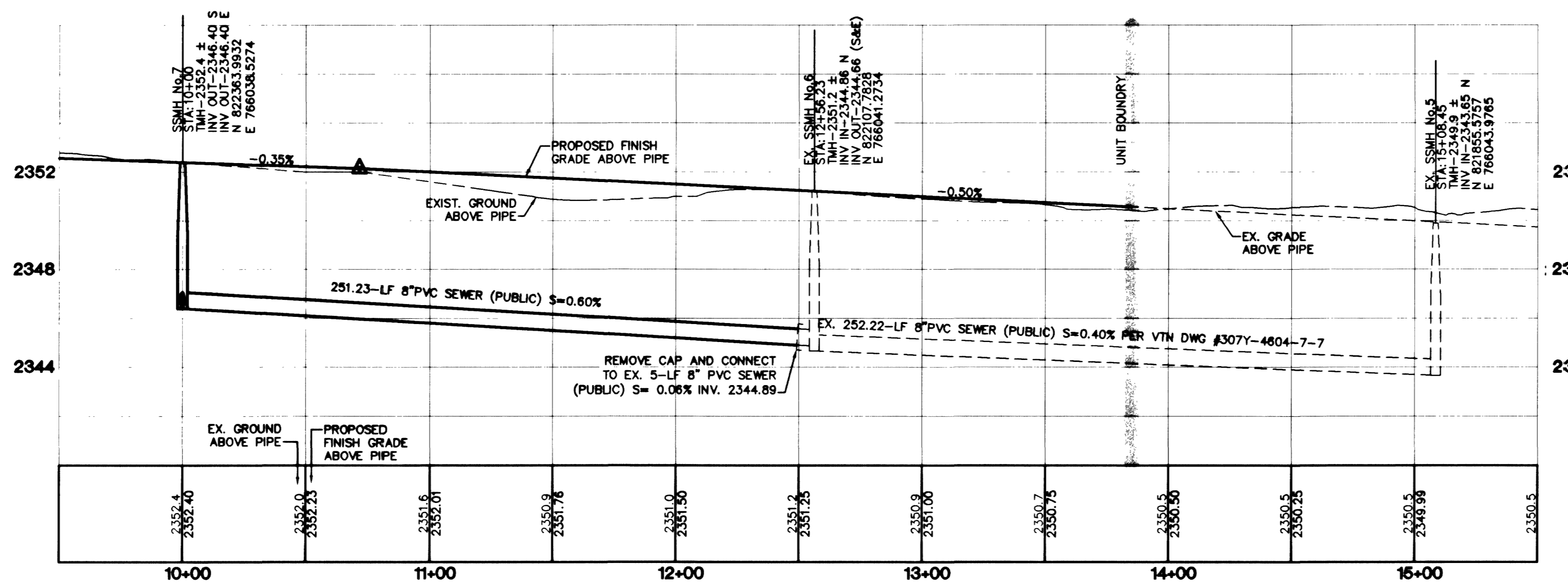
VILLAGE 7 - KEY MAP

NOT TO SCALE



PROFILE SCALE:
HORIZ. 1" = 40'
VERT. 1" = 4'

WARTHEN MEADOWS STREET
(PUBLIC)



PROJECT BENCHMARK

PROJECT DATUM: NAVD88
CITY OF LAS VEGAS BENCHMARK 11V90-13NFS
NAVD88 ELEVATION: 710.9608 METERS (2332.54 FEET)
ONLY BM 413148, NAVD 88 ELEV=710.953 METERS (2332.52 FEET) 1" DIAMETER CONCRETE MONUMENT 77 FEET SOUTH & 54 FEET WEST OF N.E. CORNER SEC. 13T19R60E 10' EAST OF LARGE POWER POLE.

BASIS OF BEARINGS

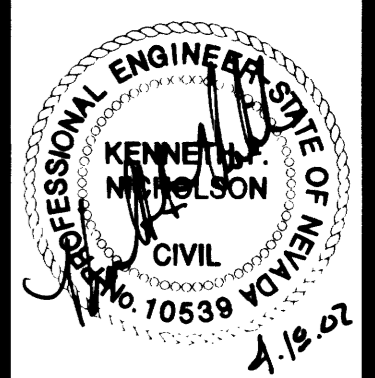
THE BASIS OF BEARINGS FOR THIS PROJECT IS GRID NORTH AS DEFINED BY THE NEVADA COORDINATE SYSTEM OF 1983 (NCS83), EAST ZONE (2701) DETERMINED BY CLARK COUNTY GIS CONTROL POINTS 802, 803, 804 AND 805, AS SHOWN ON A RECORD OF SURVEY ON FILE IN THE CLARK COUNTY, NEVADA, RECORDER'S OFFICE, IN BOOK 88 OF SURVEYS, AT PAGE 53.

NOTE: CONTRACTOR SHALL VERIFY HORIZONTAL AND VERTICAL LOCATION OF EXISTING UTILITIES AND NOTIFY THE DESIGN ENGINEER IMMEDIATELY OF ANY DISCREPANCIES PRIOR TO CONSTRUCTION.

KB HOME
750 PILOT ROAD, SUITE F
LAS VEGAS, NV 89119
(702) 614-2500

SEWER PLAN & PROFILE
WARTHEN MEADOWS STREET
STA: 10+00.00 - 15+50.00

IRON MOUNTAIN RANCH
VILLAGE 7
UNIT 2



SHEET
SS5
23 OF 29 SHEETS
DRAWING NO.
3071-4604-7-2

DATE: DEC '01
SCALE: 1"=40' HORIZ.
1"=4' VERT.

2727 SOUTH RAINBOW BOULEVARD LAS VEGAS, NEVADA 89146-5148
PH. (702) 873-7550 FAX (702) 362-2597
PLANNERS & LAND SURVEYORS



CONSULTING ENGINEERS

REVISIONS

DATE

BY

REVISION