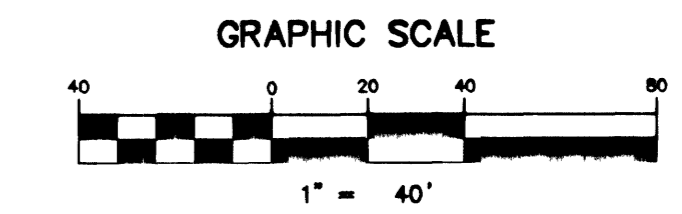


VILLAGE 7 - KEY MAP

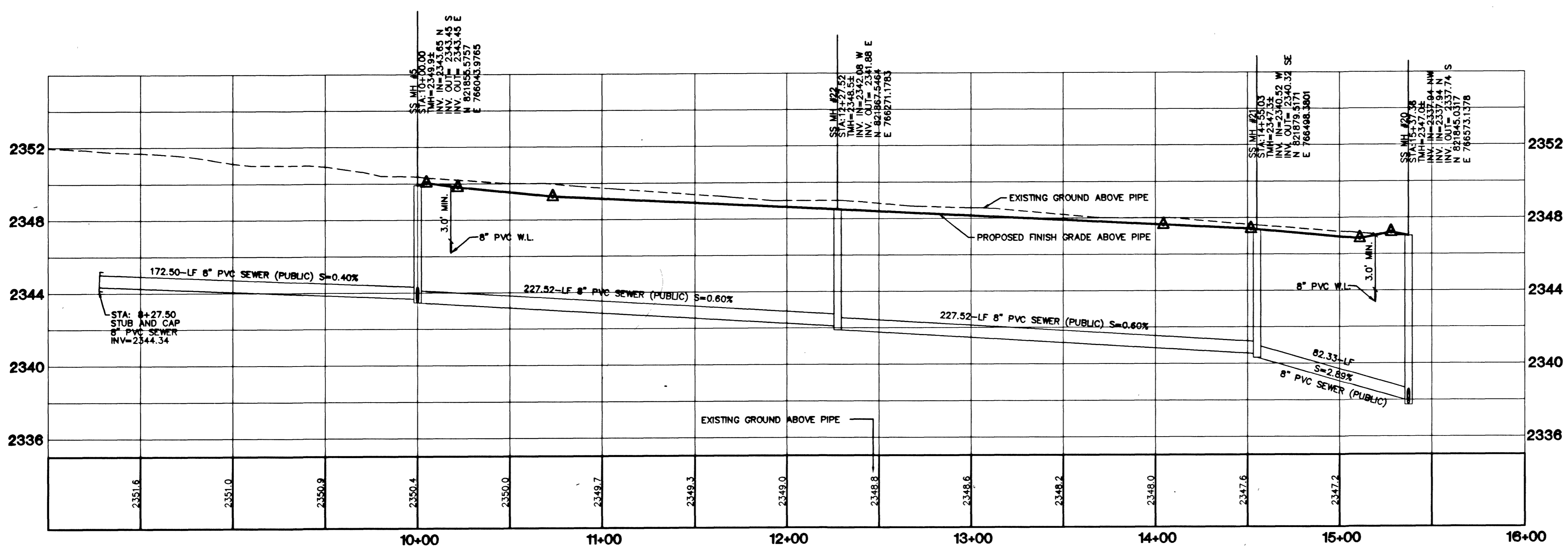
PROFILE SCALE:  
HORIZ. 1" = 40'  
VERT. 1" = 4'



IRONHORSE RANCH DRIVE  
(PUBLIC)

**PROJECT BENCHMARK**  
PROJECT DATUM: NAVD88  
CITY OF LAS VEGAS BENCHMARK 11V90-13NES  
NAVD88 ELEVATION: 710.9608 METERS (2332.54 FEET)  
ONLY BM 413148 NAVD 88 ELEV=710.953 METERS (2332.52 FEET) 1" DIAMETER CONCRETE MONUMENT 77 FEET SOUTH & 54 FEET WEST OF N.E. CORNER SEC. 13T19R60E 10" EAST OF LARGE POWER POLE.

**BASIS OF BEARINGS**  
THE BASIS OF BEARINGS FOR THIS PROJECT IS GRID NORTH AS DEFINED BY THE NEVADA COORDINATE SYSTEM OF 1983 (NCS83), EAST ZONE (270), DETERMINED BY CLARK COUNTY GIS CONTROL POINTS 802, 803, 804 AND 805, AS SHOWN ON A RECORD OF SURVEY ON FILE IN THE CLARK COUNTY, NEVADA, RECORDER'S OFFICE, IN BOOK 88 OF SURVEYS, AT PAGE 53.



NOTE: CONTRACTOR SHALL VERIFY HORIZONTAL AND VERTICAL LOCATION OF EXISTING UTILITIES AND NOTIFY THE DESIGN ENGINEER IMMEDIATELY OF ANY DISCREPANCIES PRIOR TO CONSTRUCTION.

Avoid cutting underground utility lines. It's costly.  
Call before you Dig  
1-800-227-2600

Avoid overhead power line contact.  
Call before you OVERHEAD  
1-702-593-6111

CITY OF LAS VEGAS		KB HOME 750 PILOT ROAD, SUITE F LAS VEGAS, NV 89119 (702) 614-2500	
SEWER PLAN & PROFILE IRONHORSE RANCH AVENUE STA: 10+00.00 - 15+37.36		IRON MOUNTAIN RANCH VILLAGE 7 UNIT 1	
DRAWN BY: KOS / FPR	NOV. '01	DESIGNED BY: KOS / FPR	NOV. '01
CHECKED BY: KEN	NOV. '01	PROJECT NO: 3920-1	SCALE: 1"=40' HORIZ. 1"=4' VERT.
SHEET SS2 18 of 25 SHEETS		DRAWING NO. 3077V-4604-7-1	