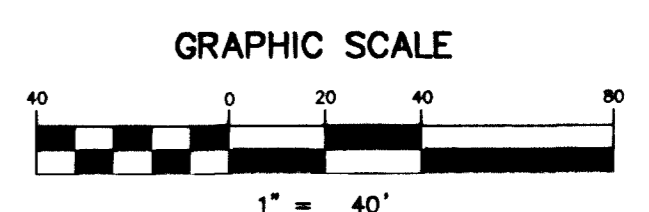
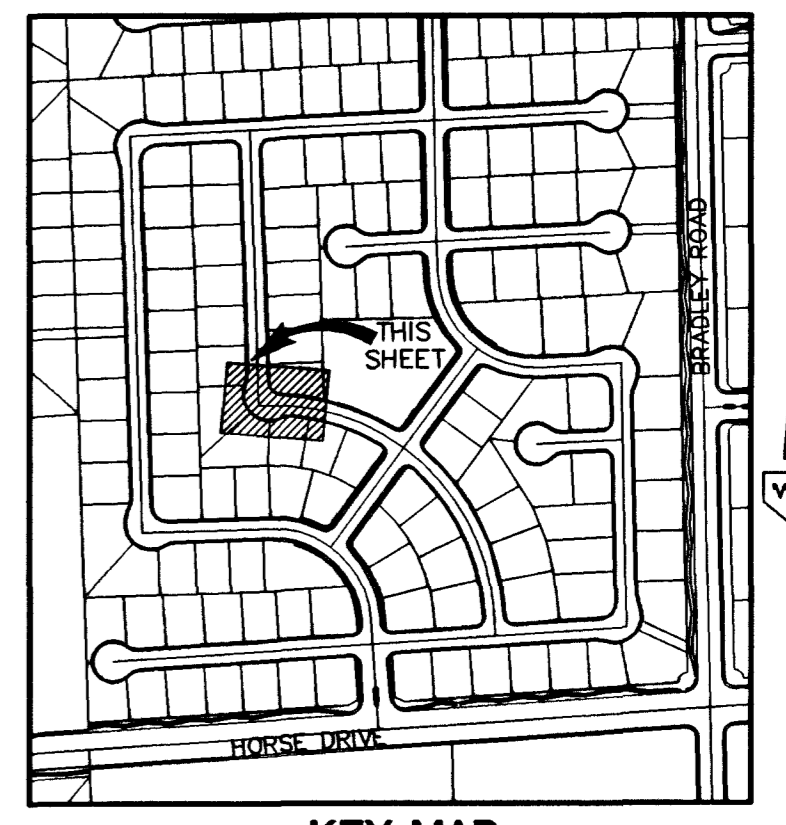
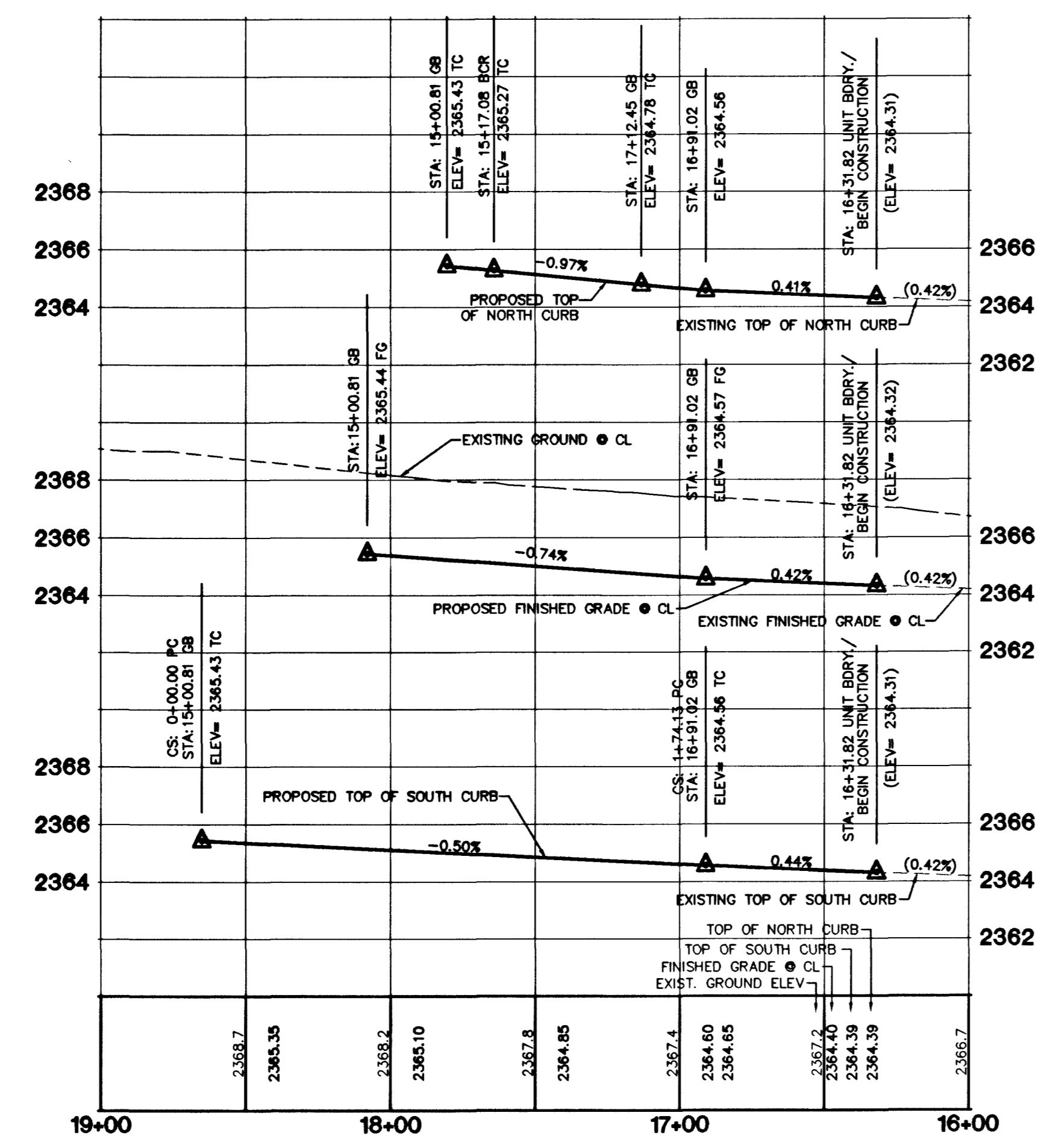


EXISTING IRON MOUNTAIN RANCH VILLAGE 6 - UNIT 1
 REFER TO IMPROVEMENT PLANS PER VTN NEVADA
 CLV DWG # 1071-4604-6-1



HIRSCH MOUNTAIN DRIVE (PUBLIC)



PROFILE SCALE:
 HORIZ. 1" = 40'
 VERT. 1" = 4'

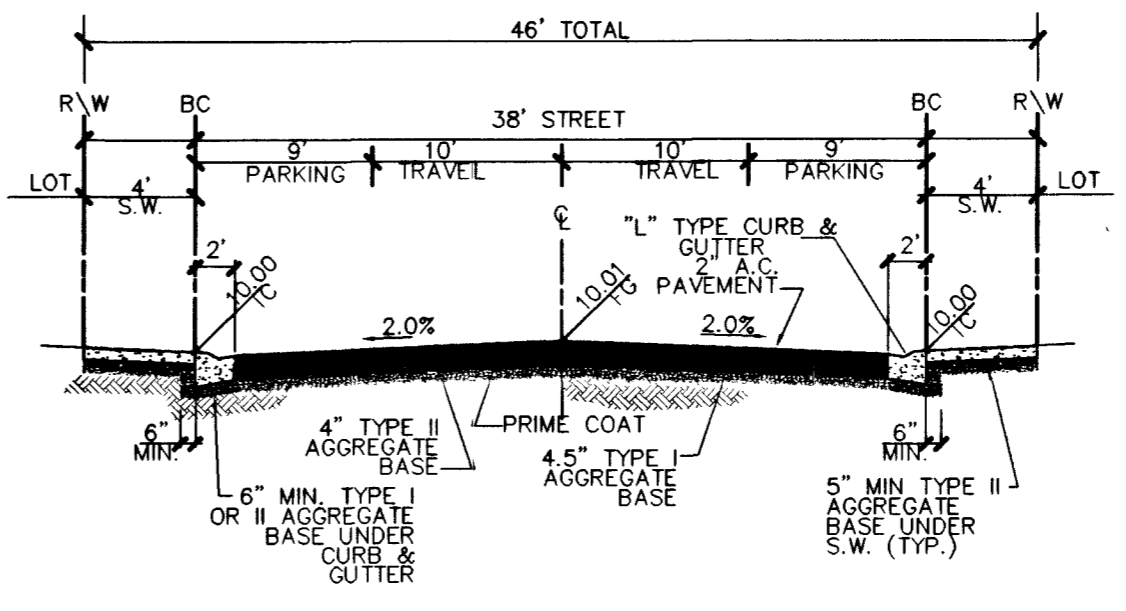
SIDEWALK RAMP TABLE
 PER STD. DWG 235 CASE 1

NO.	DIM "A"	DIM "B"	CASE
1	8.0'	8.0'	1

CURVE TABLE

CURVE	LENGTH	RADIUS	DELTA	TANGENT
C1	30.98	20.00	88°45'10"	19.57
C2	31.85	20.00	91°14'50"	20.44
C3	52.67	34.00	88°45'10"	33.27
C4	23.64	54.00	25°05'15"	12.01
C5	126.09	52.00	138°55'40"	138.81
C6	23.64	54.00	25°05'15"	12.01
C7	50.90	34.00	85°46'16"	31.58
C8	84.01	471.00	10°13'11"	42.12
C9	23.64	54.00	25°05'15"	12.01
C10	123.83	52.00	136°26'14"	130.13
C11	26.67	54.00	28°17'42"	13.61
C12	56.71	433.00	7°30'12"	28.39
C13	53.41	34.00	90°00'00"	34.00
C14	28.07	54.00	29°46'54"	14.36
C15	135.74	52.00	149°33'48"	191.15
C16	28.07	54.00	29°46'54"	14.36
C17	62.24	219.00	18°17'02"	31.33
C18	51.44	181.00	16°17'02"	25.90
C19	26.50	34.00	44°39'01"	13.98
C20	190.36	40.50	269°18'02"	41.00
C21	26.50	34.00	44°39'01"	13.98

DISCLAIMER NOTE
 UTILITY LOCATIONS SHOWN HEREON ARE APPROXIMATE ONLY. IT SHALL BE THE CONTRACTOR'S RESPONSIBILITY TO DETERMINE THE EXACT HORIZONTAL AND VERTICAL LOCATION OF ALL EXISTING UNDERGROUND AND OVERHEAD UTILITIES PRIOR TO COMMENCING CONSTRUCTION. NO REPRESENTATION IS MADE THAT ALL EXISTING UTILITIES ARE SHOWN HEREON. THE ENGINEER ASSUMES NO RESPONSIBILITY FOR UTILITIES NOT SHOWN OR UTILITIES NOT SHOWN IN THEIR PROPER LOCATION.



TYPICAL 46' STREET SECTION (PUBLIC)
 (N.T.S.) STD DWG NO. 206

- CONSTRUCTION NOTES**
- (A) CONSTRUCT "L" CURB & GUTTER PER STD. # 216
 - (B) CONSTRUCT SIDEWALK PER STD. # 234
 - (C) CONSTRUCT CROSS GUTTER PER STD. # 228
 - (D) CONSTRUCT SIDEWALK RAMP PER STD. # 235
 - (E) CONSTRUCT SIDEWALK DRAIN PER STD. # 236
 - (F) SAW-CUT & MATCH EXIST. A.C.
 - (G) CONSTRUCT "A" TYPE ISLAND CURB PER STD. # 219

PROJECT BENCHMARK
 PROJECT DATUM: NAVD88
 (OLD) CITY OF LAS VEGAS BENCHMARK 1LV90-13NES NAVD88 ELEVATION: 710.9608 METERS (2332.54 FEET)
 PROJECT DESIGNED USING OLD BENCHMARK
 (NEW) CITY OF LAS VEGAS BENCHMARK 1LV90-13NES NAVD88 ELEVATION: 710.9181 METERS (2332.40 FEET)
 (-0.14 FEET) TO GET NEW PUBLISHED DATUM
 ONLY BM 413148 NAVD 88 ELEV=710.953 METERS (2332.52 FEET) 1" DIAMETER CONCRETE MONUMENT 77 FEET SOUTH & 54 FEET WEST OF N.E. CORNER SEC. 13T19R60E 10' EAST OF LARGE POWER POLE.

BASIS OF BEARINGS
 THE BASIS OF BEARINGS FOR THIS PROJECT IS GRID NORTH AS DEFINED BY THE NEVADA COORDINATE SYSTEM OF 1983 (NCS83), EAST ZONE (2701), DETERMINED BY CLARK COUNTY GIS CONTROL POINTS 803, 804, AND 805, AS SHOWN ON A RECORD OF SURVEY ON FILE IN THE CLARK COUNTY, NEVADA, RECORDER'S OFFICE, IN BOOK 88 OF SURVEYS, AT PAGE 53.

Avoid overhead cover the contact. It's costly.
Call before you Overhead
 1-702-593-6111

Avoid cutting underground utility lines. It's costly.
Call before you Dig
 1-800-227-2600

7	6	5	4	3	2	1	REV	DATE	BY

CITY OF LAS VEGAS

KB HOME
 750 PILOT ROAD, SUITE F
 LAS VEGAS, NV 89119
 (702) 914-2500

STREET PLAN & PROFILE
HIRSCH MOUNTAIN DRIVE
 STA. 16+3182 - 17+6157

IRON MOUNTAIN RANCH
VILLAGE 6
UNIT 2

2277 SOUTH RAINBOW BOULEVARD LAS VEGAS, NEVADA 89146-5148
 PH. (702) 873-7550 FAX (702) 362-2597
 vt Nevada CONSULTING ENGINEERS • PLANNERS • LAND SURVEYORS

DRAWN BY: MAR '02
 DESIGNED BY: MAR '02
 CHECKED BY: MAR '02
 PROJECT NO.: 5974-2
 SCALE: 1"=40' HORIZ.
 1"=4' VERT.

PROFESSIONAL ENGINEER STATE OF NEVADA
 KENNETH F. HICOMSON
 No. 10539
 EXPIRES 12-31-03

SHEET
ST5
 15 OF 25 SHEETS
 DRAWING NO.
 1071-4604-6-2

50407