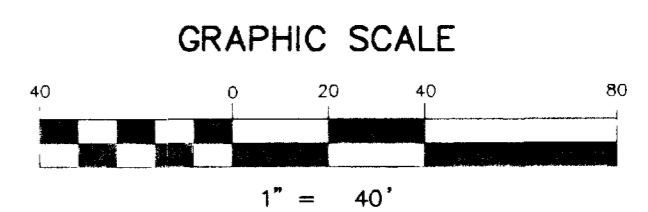
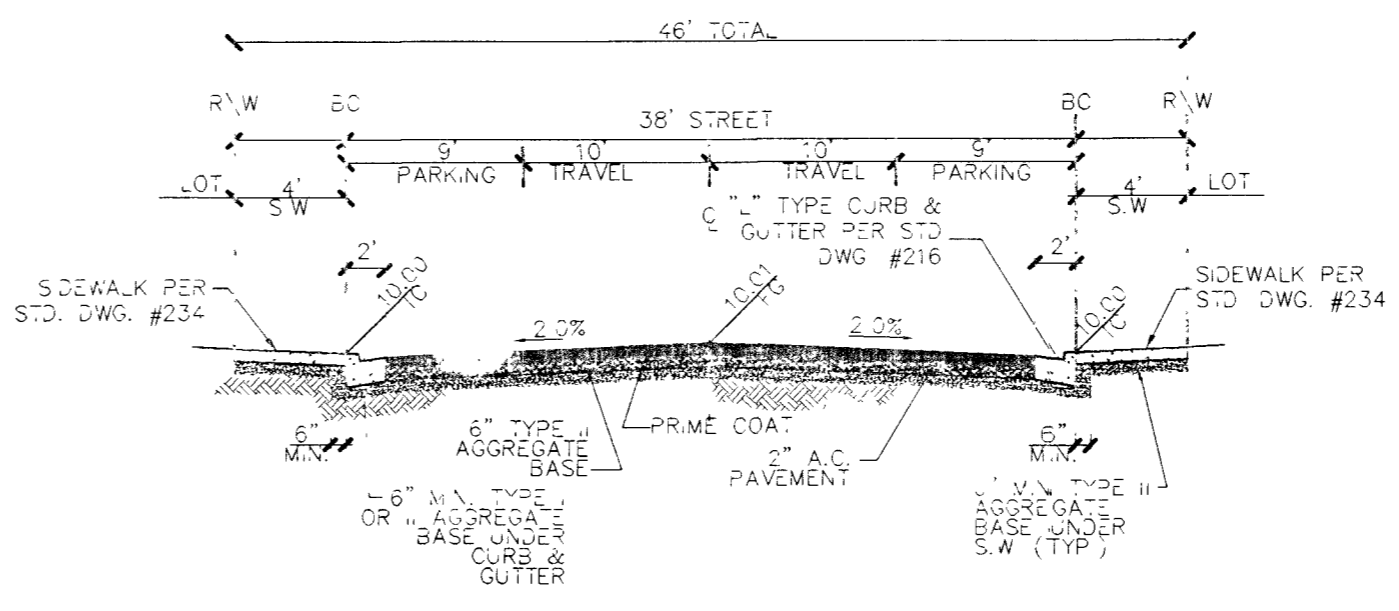


PROFILE SCALE:
HORIZ. 1" = 40'
VERT. 1" = 4'



SIDEWALK RAMP TABLE
PER STD. DWG. #235, CASE

NO.	DIM "A"	DIM "B"	CASE
1	8.0'	8.0'	I



TYPICAL 46' STREET SECTION (PUBLIC)
STD. DWG. NO. 206

CURVE TABLE					CURVE TABLE				
CURVE	LENGTH	RADIUS	DELTA	TANGENT	CURVE	LENGTH	RADIUS	DELTA	TANGENT
C1	30.78	20.00	88°10'18"	19.37	C30	26.50	34.00	44°39'01"	13.96
C2	32.05	20.00	91°49'42"	20.65	C31	32.05	20.00	91°49'42"	20.65
C3	32.05	20.00	91°49'42"	20.65	C32	51.85	34.00	87°22'57"	32.48
C4	30.78	20.00	88°10'18"	19.37	C33	23.64	54.00	25°05'15"	12.01
C5	26.50	34.00	44°39'01"	13.96	C34	124.84	52.00	137°33'28"	133.92
C6	190.36	40.50	269°18'02"	41.00	C35	23.64	54.00	25°05'15"	12.01
C7	26.50	34.00	44°39'01"	13.96	C36	31.42	20.00	90°00'00"	20.00
C8	30.78	20.00	88°10'18"	19.37	C37	31.42	20.00	90°00'00"	20.00
C9	26.50	34.00	44°39'01"	13.96	C38	372.44	471.00	45°18'20"	196.57
C10	190.36	40.50	269°18'02"	41.00	C39	114.87	433.00	44°26'34"	176.89
C11	26.50	34.00	44°39'01"	13.96	C40	29.83	20.00	85°26'39"	18.47
C12	32.05	20.00	91°49'42"	20.65	C41	33.31	20.00	95°25'07"	21.99
C13	32.05	20.00	91°49'42"	20.65	C42	29.83	20.00	85°26'39"	18.47
C14	30.78	20.00	88°10'20"	19.37	C43	33.31	20.00	95°25'07"	21.99
C15	26.50	34.00	44°39'01"	13.96	C44	156.99	471.00	19°05'51"	79.23
C16	190.36	40.50	269°18'02"	41.00	C45	137.81	433.00	18°44'05"	69.49
C17	26.50	34.00	44°39'01"	13.96	C46	47.50	219.00	12°25'35"	23.84
C18	164.69	219.00	43°05'15"	86.46	C47	28.14	20.00	80°36'31"	16.96
C19	28.14	20.00	80°36'31"	16.96	C48	28.14	20.00	80°36'31"	16.96
C20	290.09	181.00	91°49'42"	186.87	C49	154.69	219.00	40°28'12"	80.73
C21	28.14	20.00	80°36'31"	16.96	C50	226.44	181.00	71°40'46"	130.73
C22	114.51	219.00	29°57'28"	57.59	C51	31.42	20.00	90°00'00"	20.00
C23	28.07	54.00	29°46'54"	14.36	C52	31.42	20.00	90°00'00"	20.00
C24	137.40	52.00	151°23'30"	203.84	C53	34.49	20.00	98°47'51"	23.33
C25	28.07	54.00	29°46'54"	14.36	C54	34.49	20.00	98°47'51"	23.33
C26	54.49	34.00	91°49'42"	35.10	C55	23.03	150.00	8°47'51"	11.54
C27	30.78	20.00	88°10'18"	19.37	C56	23.03	150.00	8°47'51"	11.54
C28	26.50	34.00	44°39'01"	13.96	C57	47.12	30.00	90°00'00"	30.00
C29	190.36	40.50	269°18'02"	41.00	C58	47.12	30.00	90°00'00"	30.00

BENCHMARK
PROJECT DATUM: NAVD88
CITY OF LAS VEGAS BENCHMARK 1LV90-13NE
NAVD88 ELEVATION: 710.9181 METERS (2332.40 FEET)
ONLY BM 413148, DECATUR BLVD & GRAND TETON DRIVE
100' SW OF SECTION CORNER, NEXT TO METAL POWER POLE

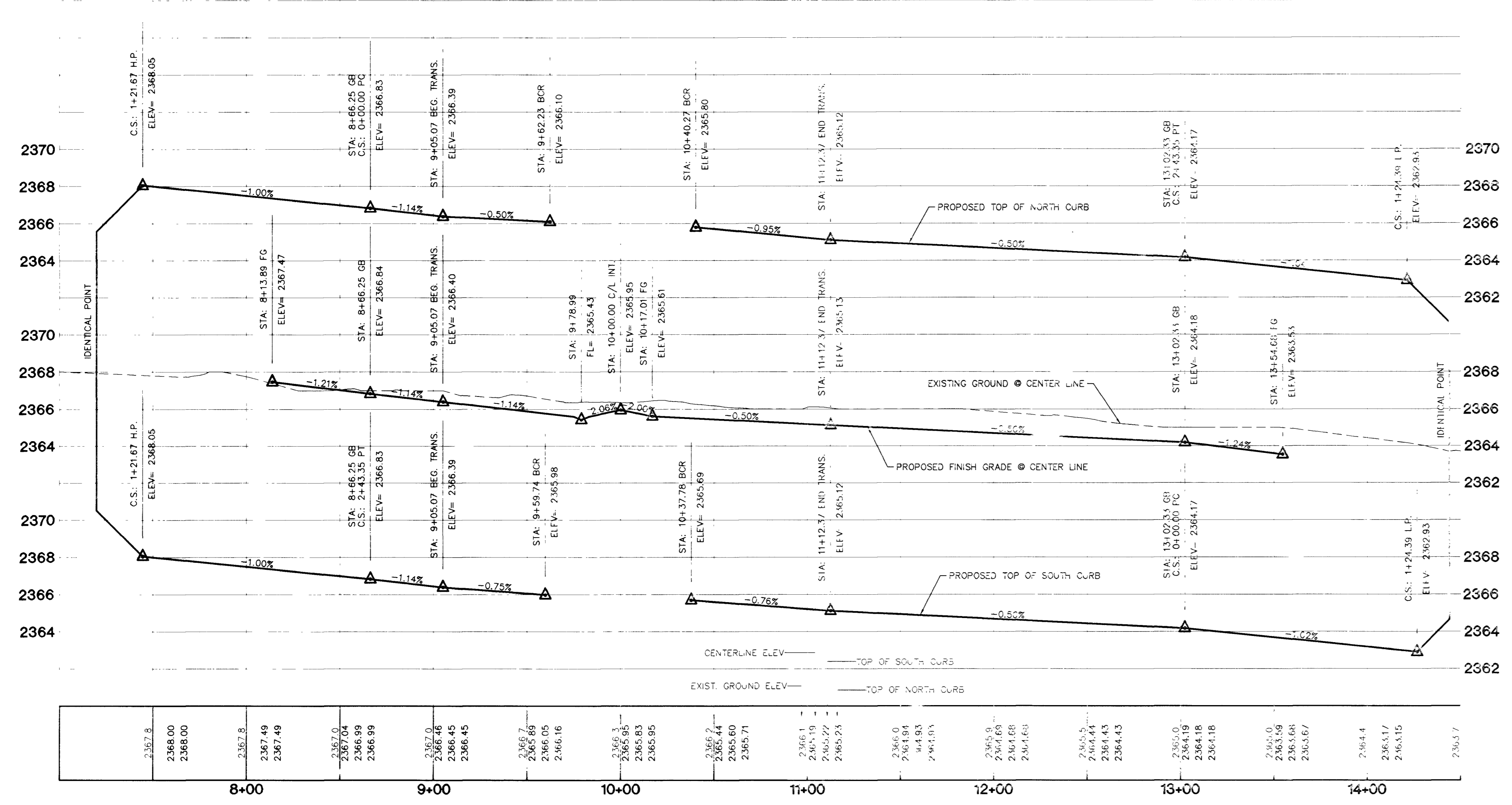
BASIS OF BEARINGS
THE BASIS OF BEARINGS FOR THIS PROJECT IS GRID NORTH AS DEFINED BY THE NEVADA COORDINATE SYSTEM OF 1983 (NCS83), EAST ZONE, (2701), DETERMINED BY CLARK COUNTY GIS CONTROL POINTS 802, 803, 804, AND 805, AS SHOWN ON A RECORD OF SURVEY ON FILE N THE CLARK COUNTY, NEVADA, RECORDER'S OFFICE, IN BOOK 88 OF SURVEYS, AT PAGE 53.

- CONSTRUCTION NOTES**
- (A) CONSTRUCT "L" CURB & GUTTER PER STD. # 216
 - (B) CONSTRUCT SIDEWALK PER STD. # 234
 - (C) CONSTRUCT CROSS GUTTER PER STD. # 228
 - (D) CONSTRUCT SIDEWALK RAMP PER STD. # 235
 - (E) CONSTRUCT SIDEWALK DRAIN PER STD. # 236
 - (F) CUT & MATCH EXIST. A.C.
 - (G) CONSTRUCT "A" TYPE ISLAND CURB PER STD. # 219

DISCLAIMER NOTE
UTILITY LOCATIONS SHOWN HEREON ARE APPROXIMATE ONLY. IT SHALL BE THE CONTRACTOR'S RESPONSIBILITY TO DETERMINE THE EXACT HORIZONTAL AND VERTICAL LOCATION OF ALL EXISTING UNDERGROUND AND OVERHEAD UTILITIES PRIOR TO COMMENCING CONSTRUCTION. NO REPRESENTATION IS MADE THAT ALL EXISTING UTILITIES ARE SHOWN HEREON. THE ENGINEER ASSUMES NO RESPONSIBILITY FOR UTILITIES NOT SHOWN OR UTILITIES NOT SHOWN IN THEIR PROPER LOCATION.

Avoid cutting underground utility lines. It's costly.
Call before you Dig
1-800-227-2600

Avoid overhead power line contact. It's costly.
Call before you Overhead
1-702-593-6111



46597

CITY OF LAS VEGAS		KB HOME		STREET PLAN & PROFILE	
2727 SOUTH RAINBOW BOULEVARD LAS VEGAS, NEVADA 89146-5148 PH: (702) 873-7550 FAX: (702) 362-2597		750 PILOT ROAD, SUITE F LAS VEGAS, NV 89119 (702) 897-2598		M/GI RANCH COURT STA: 4+19.88 - 14+44.07	
neveda CONSULTING ENGINEERS • PLANNERS • LAND SURVEYORS		IRON MOUNTAIN RANCH		VILLAGE 6	
REVISION		UNIT 1		SCALE: 1" = 40' HORIZ. 1" = 4' VERT.	
7	6	JAN. 02	JAN. 02	JAN. 02	PROJECT NO. 5974-1
5	4	DESIGNED BY: R.M.S.	CHECKED BY: KEN	DATE: 1-18-02	DRAWING NO. S14
3	2	DRAWN BY: R.M.S.		EXPIRES 12-31-03	23 OF 39 SHEETS
1	1	PROJECT NO. 5974-1		1-702-593-6111	DRAWING NO. 1074-4604-6-1