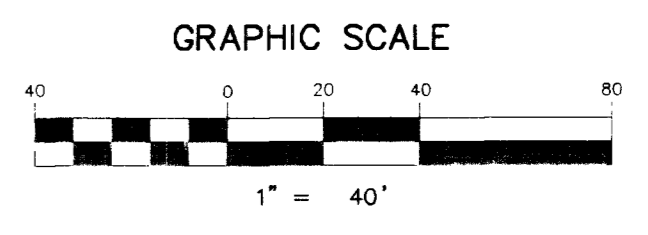


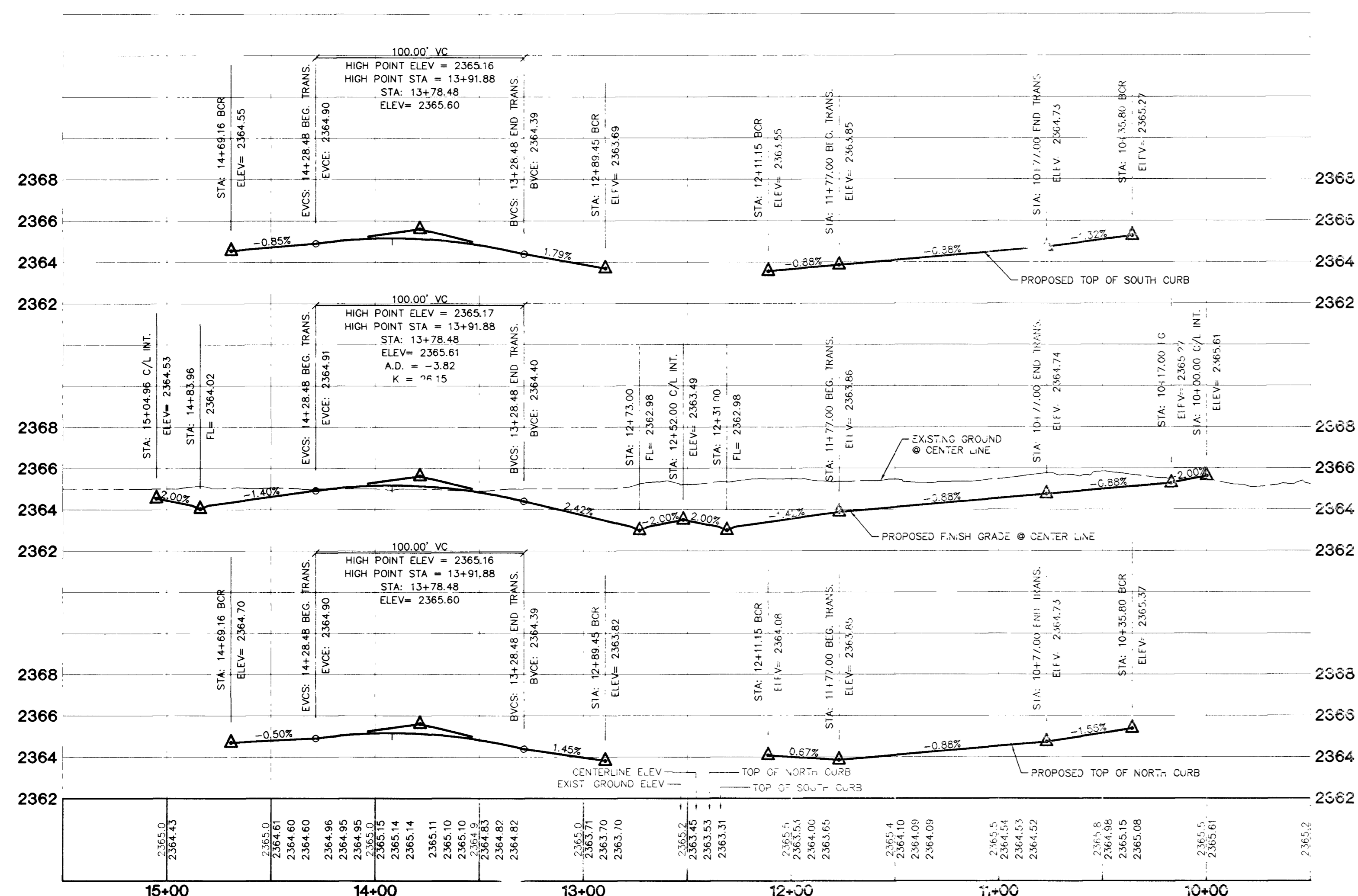
PROFILE SCALE:
HORIZ. 1" = 40'
VERT. 1" = 4'



SIDEWALK RAMP TABLE
PER STD. DWG. 235 CASE

NO.	DIM "A"	DIM "B"	CASE
1	8.0'	8.0'	1

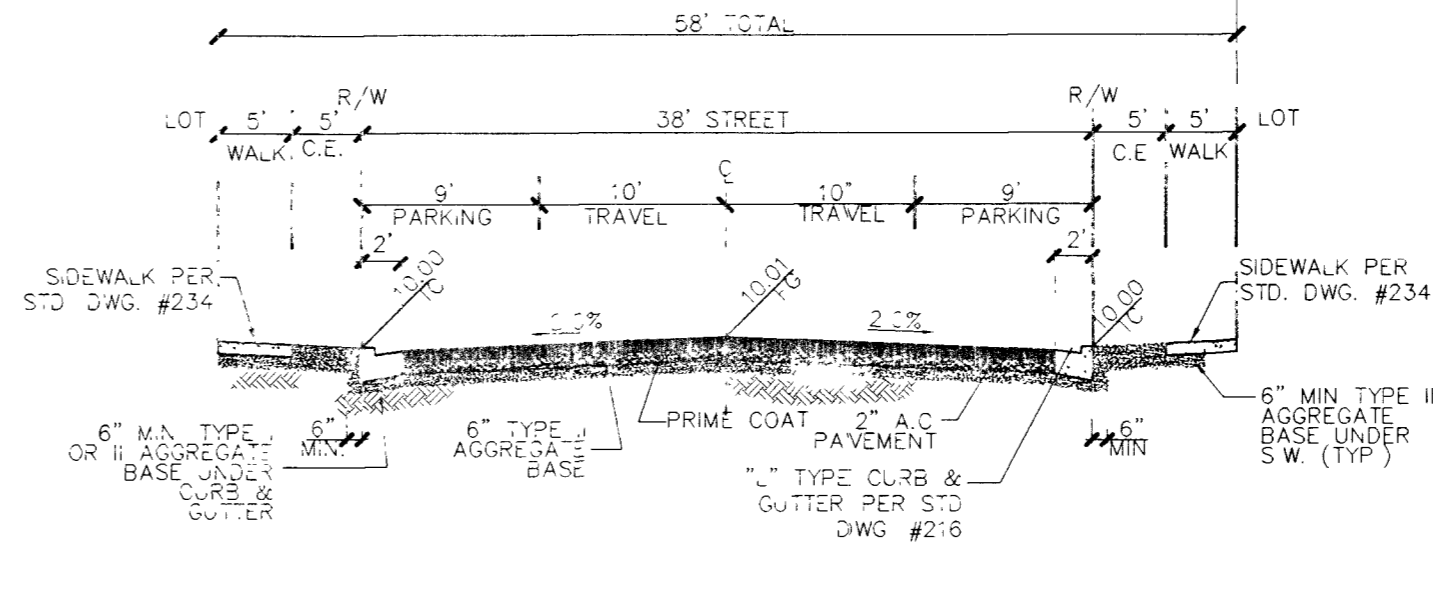
BALDWIN CANYON LANE (PUBLIC)



CURVE TABLE

CURVE	LENGTH	RADIUS	DELTA	TANGENT
C1	36.74	20.00	88°10'8"	19.37
C2	32.05	20.00	91°49'42"	20.65
C3	32.05	20.00	91°49'42"	20.65
C4	30.78	20.00	88°10'18"	19.37
C5	26.50	34.00	44°39'01"	13.96
C6	190.36	40.50	269°18'02"	41.00
C7	26.50	34.00	44°39'01"	13.96
C8	30.78	20.00	88°10'18"	19.37
C9	26.50	34.00	44°39'01"	13.96
C10	190.36	40.50	269°18'02"	41.00
C11	26.50	34.00	44°39'01"	13.96
C12	32.05	20.00	91°49'42"	20.65
C13	32.05	20.00	91°49'42"	20.65
C14	30.78	20.00	88°10'20"	19.37
C15	26.50	34.00	44°39'01"	13.96
C16	190.36	40.50	269°18'02"	41.00
C17	26.50	34.00	44°39'01"	13.96
C18	164.69	219.00	43°05'15"	86.46
C19	28.14	20.00	80°36'31"	16.96
C20	290.09	181.00	91°49'42"	186.87
C21	28.14	20.00	80°36'31"	16.96
C22	114.51	219.00	29°57'28"	58.59
C23	28.07	54.00	29°46'54"	14.36
C24	137.40	52.00	11°23'30"	20.84
C25	28.07	54.00	29°46'54"	14.36
C26	54.49	34.00	91°49'42"	35.10
C27	30.78	20.00	88°10'18"	19.37
C28	26.50	34.00	44°39'01"	13.96
C29	190.36	40.50	269°18'02"	41.00

BENCHMARK
PROJECT DATUM: NAVD88
CITY OF LAS VEGAS BENCHMARK 1LV90-13NES
NAVD88 ELEVATION: 710.9181 METERS (2332.40 FEET)
ONLY BM 413148, DECATUR BLVD & GRAND TETON DRIVE
100' SW OF SECTION CORNER, NEXT TO METAL POWER POLE



BASIS OF BEARINGS
THE BASIS OF BEARINGS FOR THIS PROJECT IS GRID NORTH AS DEFINED BY THE NEVADA COORDINATE SYSTEM OF 1983 (NCS83), EAST 2°42'12.00" (270.1), DETERMINED BY CLARK COUNTY GIS CONTROL POINTS 802, 803, 804, AND 805, AS SHOWN ON A RECORD OF SURVEY ON FILE N THE CLARK COUNTY, NEVADA, RECORDER'S OFFICE, IN BOOK 88 OF SURVEYS, AT PAGE 53.

- CONSTRUCTION NOTES**
- (A) CONSTRUCT "L" CURB & GUTTER PER STD. # 216
 - (B) CONSTRUCT SIDEWALK PER STD. # 234
 - (C) CONSTRUCT CROSS GUTTER PER STD. # 228
 - (D) CONSTRUCT SIDEWALK RAMP PER STD. # 235
 - (E) CONSTRUCT SIDEWALK DRAIN PER STD. # 236
 - (F) CUT & MATCH EXIST. A.C.
 - (G) CONSTRUCT "A" TYPE ISLAND CURB PER STD. # 219

DISCLAIMER NOTE
UTILITY LOCATIONS SHOWN HEREON ARE APPROXIMATE ONLY. IT SHALL BE THE CONTRACTOR'S RESPONSIBILITY TO DETERMINE THE EXACT HORIZONTAL AND VERTICAL LOCATION OF ALL EXISTING UNDERGROUND AND OVERHEAD UTILITIES PRIOR TO COMMENCING CONSTRUCTION. NO REPRESENTATION IS MADE THAT ALL EXISTING UTILITIES ARE SHOWN HEREON. THE ENGINEER ASSUMES NO RESPONSIBILITY FOR UTILITIES NOT SHOWN OR UTILITIES NOT SHOWN IN THEIR PROPER LOCATION.

Call before you Dig
1-800-227-2600

Call before you Overhead
1-702-593-6111

CITY OF LAS VEGAS
2727 SOUTH RAINBOW BOULEVARD, LAS VEGAS, NEVADA 89146-5148
PH: (702) 873-7550 FAX: (702) 362-2597
nevada CONSULTING ENGINEERS • PLANNERS • LAND SURVEYORS

KB HOME
750 PILOT ROAD, SUITE F
IRON MOUNTAIN RANCH VILLAGE 6 UNIT 1
(702) 814-2500

STREET PLAN & PROFILE
BALDWIN CANYON LANE
STA: 10+00.00 - 15+04.96

IRON MOUNTAIN RANCH VILLAGE 6 UNIT 1

DRAWN BY: R.M.S. JAN. 02
DESIGNED BY: R.M.S. JAN. 02
CHECKED BY: R.M.S. JAN. 02
PROJECT NO: 9974-1
SCALE: 1" = 40' HORIZ.
1" = 4' VERT.

PROFESSIONAL ENGINEER
KENNETH M. JOHNSON
CIVIL ENGINEER
NO. 10539
EXPIRES: 12-31-03
SHEET 20 OF 39 SHEETS
DRAWING NO. 1074-4604-6-1

46594