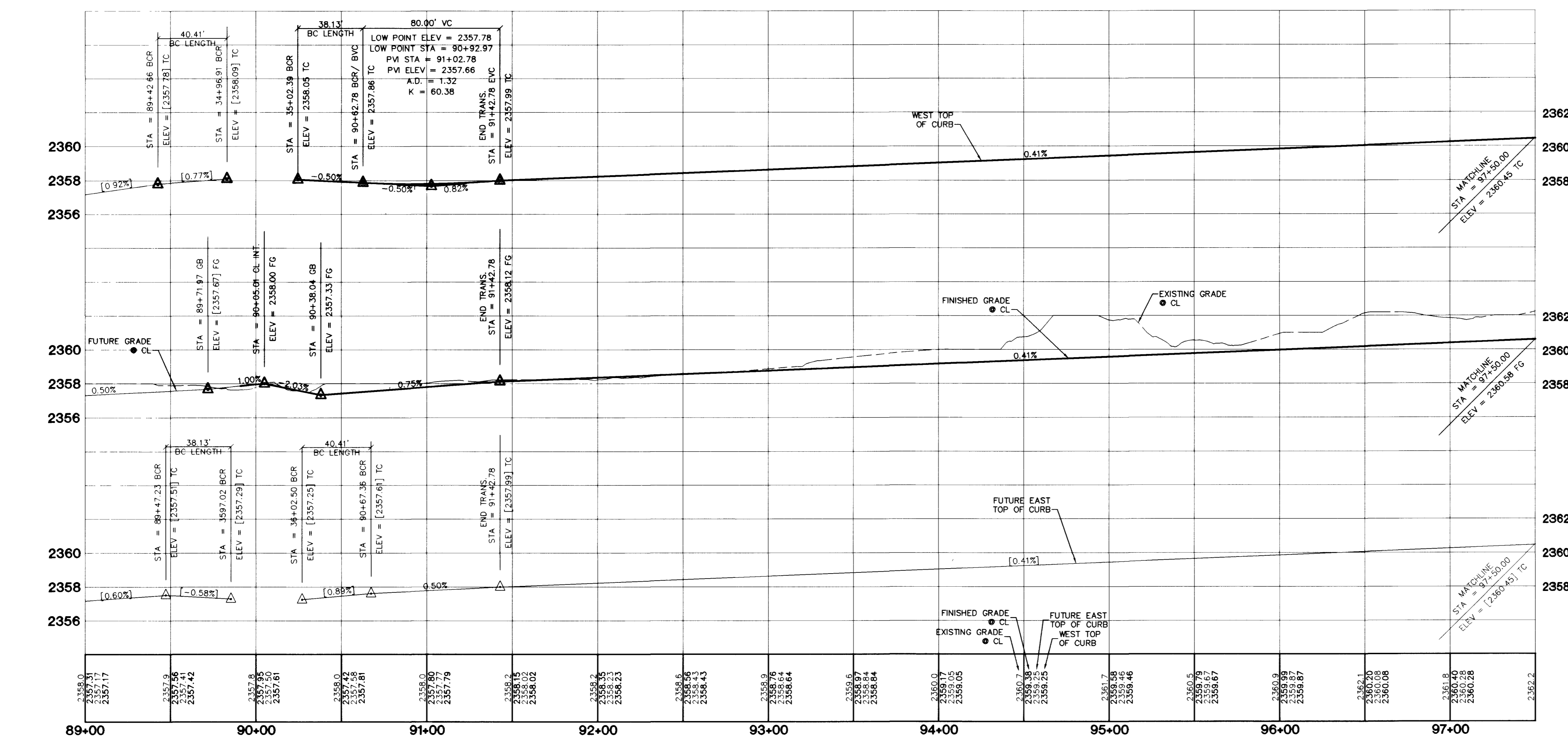
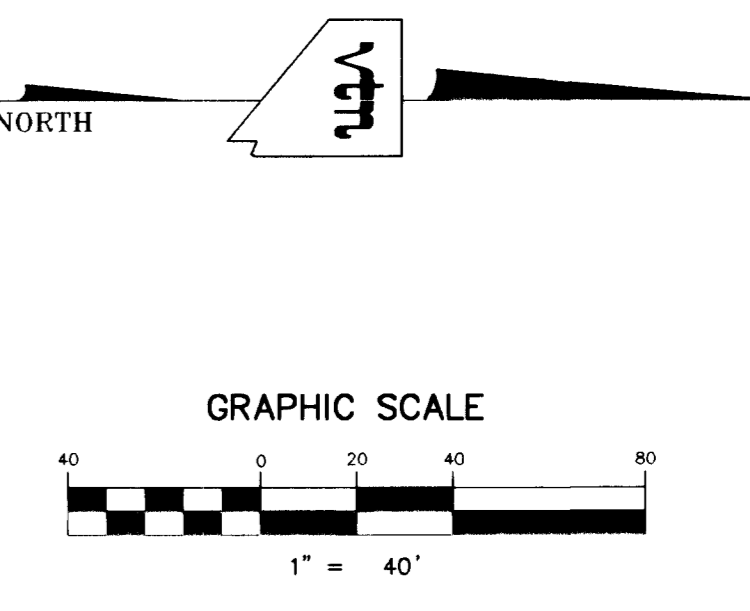
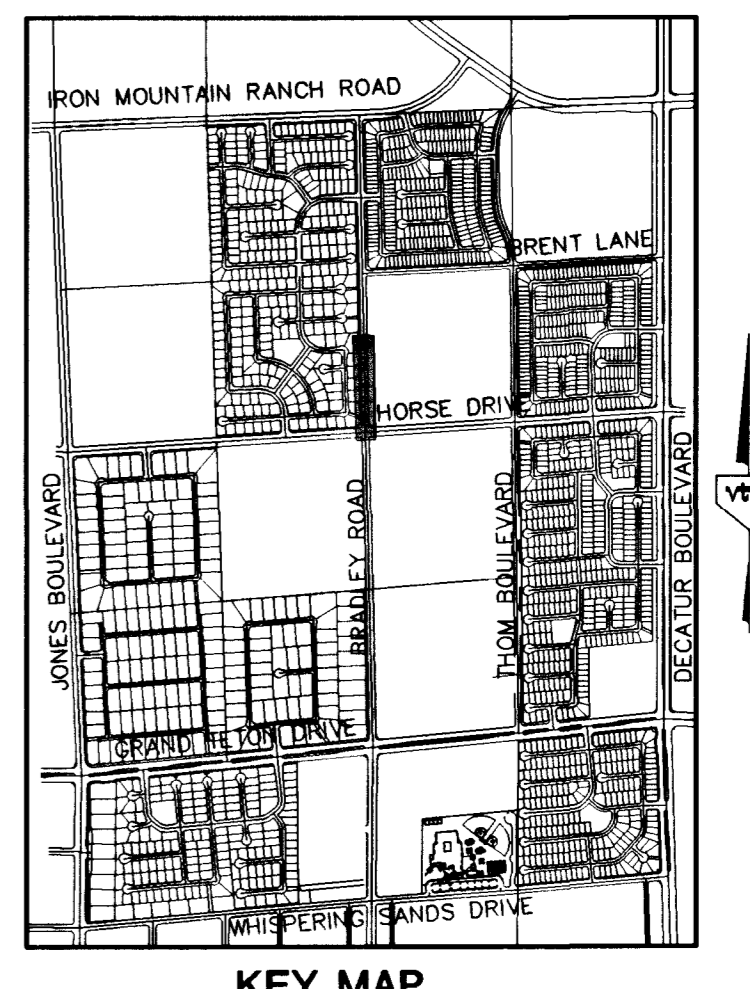


CURVE TABLE

NO.	RADIUS	DELTA	LENGTH	TANGENT
C1	15.00'	43°38'19"	11.42'	6.01'
C2	15.00'	39°58'55"	10.47'	5.46'
C3	20.00'	51°18'08"	17.91'	9.60'
C4	20.00'	54°57'30"	19.18'	10.40'
C5	15.00'	32°22'44"	8.44'	4.35'
C6	23.00'	03°01'06"	11.75'	5.88'
C7	20.00'	45°12'07"	15.78'	8.33'
C8	50.00'	05°58'25"	5.21'	2.61'
C9	50.00'	23°48'29"	20.78'	10.94'
C10	171.00'	21°39'19"	64.63'	32.71'
C11	219.00'	43°05'15"	164.69'	86.46'
C12	200.00'	91°49'42"	320.54'	206.49'
C13	229.00'	43°05'15"	172.21'	90.41'
C14	229.00'	23°47'49"	95.11'	48.25'
C15	229.00'	191°7'25"	77.10'	38.92'
C16	181.00'	60°49'32"	192.15'	106.25'
C17	44.50'	16°16'43"	12.64'	6.36'
C18	44.50'	118°22'18"	91.94'	74.61'
C19	44.50'	110°39'22"	85.94'	64.33'
C20	44.50'	23°59'39"	18.64'	9.46'
C21	44.50'	58°36'50"	45.52'	24.98'
C22	44.50'	66°27'33"	51.62'	28.15'
C23	44.50'	26°05'09"	20.26'	10.31'
C24	44.50'	48°21'07"	37.55'	19.98'
C25	44.50'	69°47'23"	54.20'	31.04'
C26	44.50'	67°35'20"	52.49'	29.78'
C27	44.50'	71°36'40"	55.62'	32.10'
C28	200.00'	52°28'44"	163.19'	98.58'
C29	200.00'	39°20'58"	137.36'	71.51'
C30	171.00'	60°49'32"	181.53'	100.38'
C31	223.00'	32°36'11"	128.19'	65.92'
C32	223.00'	04°00'21"	15.98'	7.80'
C33	223.00'	25°54'43"	100.85'	51.30'
C34	56.00'	54°50'17"	53.60'	29.05'
C35	56.00'	77°54'03"	45.21'	22.74'
C36	56.00'	18°39'09"	18.23'	9.20'
C37	30.00'	91°49'42"	48.08'	30.97'
C38	50.00'	29°46'54"	23.96'	13.30'
C39	30.00'	44°39'01"	33.38'	12.32'
C40	44.50'	124°47'01"	96.92'	85.09'
C41	44.50'	144°31'01"	112.24'	109.09'
C42	16.00'	88°10'18"	24.62'	15.90'
C43	16.00'	91°49'42"	25.64'	16.52'
C44	56.00'	32°16'42"	31.55'	16.21'
C45	30.00'	87°22'47"	45.75'	30.22'
C46	50.00'	25°05'15"	21.89'	11.12'
C47	56.00'	137°33'28"	134.45'	144.22'
C48	20.00'	82°37'03"	32.33'	16.94'
C49	475.00'	07°16'49"	60.35'	30.22'
C50	429.00'	08°41'55"	65.13'	32.63'
C51	475.00'	09°33'36"	78.26'	39.72'
C52	475.00'	08°58'21"	74.39'	37.27'
C53	475.00'	08°17'25"	68.73'	34.42'
C54	475.00'	11°11'35"	92.79'	46.55'
C55	452.00'	73°30'54"	578.95'	337.62'
C56	452.00'	23°39'12"	186.60'	94.65'
C57	452.00'	49°51'41"	393.35'	210.11'
C58	429.00'	12°50'31"	58.15'	48.38'
C59	429.00'	10°04'25"	75.43'	37.81'
C60	15.00'	37°14'43"	9.75'	5.05'
C61	475.00'	01°25'59"	11.88'	5.94'
C62	20.00'	49°16'49"	17.20'	9.17'
C63	20.00'	57°43'27"	20.15'	11.02'
C64	429.00'	01°37'13"	12.13'	6.02'
C65	15.00'	47°12'57"	12.36'	6.48'
C66	10.00'	80°36'31"	14.07'	8.48'
C67	20.00'	80°36'31"	28.14'	16.96'
C68	329.00'	10°45'33"	61.59'	30.89'
C69	329.00'	06°02'03"	34.65'	17.34'
C70	329.00'	16°45'40"	96.24'	48.47'
C71	429.00'	10°22'42"	77.71'	38.96'
C72	429.00'	07°52'11"	58.92'	29.51'
C73	475.00'	19°05'18"	158.25'	79.86'
C74	56.00'	151°23'30"	147.97'	219.63'
C75	44.50'	269°18'02"	209.16'	123.51'
C76	229.00'	12°25'35"	49.67'	24.93'
C77	200.00'	71°40'46"	250.21'	144.46'
C78	219.00'	12°25'35"	47.50'	23.84'
C79	171.00'	71°40'46"	213.93'	123.51'
C80	181.00'	71°40'46"	226.44'	130.73'
C81	200.00'	21°49'05"	76.16'	38.55'
C82	200.00'	49°51'41"	174.05'	92.97'
C83	219.00'	40°28'12"	154.69'	80.73'
C84	229.00'	40°28'12"	161.75'	84.41'
C85	229.00'	13°01'29"	52.06'	26.14'
C86	229.00'	16°59'50"	67.93'	34.22'
C87	229.00'	10°25'53"	41.78'	20.94'
C88	15.00'	41°48'37"	10.95'	5.73'
C89	15.00'	31°31'16"	8.25'	4.23'
C90	15.00'	67°37'03"	17.70'	10.04'
C91	15.00'	99°08'19"	25.95'	17.61'
C92	155.00'	09°08'19"	24.72'	12.39'
C93	25.00'	90°00'00"	39.27'	25.00'
C94	20.00'	53°07'48"	18.55'	10.00'
C95	329.00'	17°21'33"	99.68'	50.22'
C96	329.00'	16°59'50"	97.60'	49.16'
C97	329.00'	10°26'53"	59.99'	30.08'
C98	329.00'	44°48'16"	257.27'	136.62'
C99	329.00'	10°25'20"	59.85'	30.01'
C100	329.00'	12°50'31"	73.74'	37.03'
C101	329.00'	08°41'55"	49.95'	25.02'
C102	475.00'	46°43'46"	387.40'	205.20'
C103	429.00'	46°04'35"	345.00'	182.44'
C104	20.00'	87°22'57"	30.50'	19.11'
C105	171.00'	39°10'13"	116.90'	60.84'
C106	183.00'	31°00'10"	99.02'	50.76'
C107	475.00'	20°31'17"	170.13'	85.99'
C108	429.00'	18°52'06"	148.76'	75.14'
C109	16.00'	90°00'00"	25.13'	16.00'
C110	44.50'	42°24'30"	32.94'	17.26'
C111	44.50'	39°26'41"	39.64'	19.95'
C112	44.50'	48°14'50"	37.47'	19.93'



SIDEWALK RAMPS TABLE
PER STD. DWG 235 CASE I

NO.	DIM "A"	DIM "B"	CASE
1	8.0'	8.0'	I

CONSTRUCTION NOTES

- CONSTRUCT "L" CURB & GUTTER PER STD. # 216
- CONSTRUCT SIDEWALK PER STD. # 234
- CONSTRUCT CROSS GUTTER PER STD. # 228
- CONSTRUCT SIDEWALK RAMP PER STD. # 235
- CONSTRUCT SIDEWALK DRAIN PER STD. # 236
- EDGE OF PAVEMENT
- CONSTRUCT "A" TYPE ISLAND CURB PER STD. # 219

DISCLAIMER NOTE

UTILITY LOCATIONS SHOWN HEREON ARE APPROXIMATE ONLY. IT SHALL BE THE CONTRACTOR'S RESPONSIBILITY TO DETERMINE THE EXACT HORIZONTAL AND VERTICAL LOCATION OF ALL EXISTING UNDERGROUND AND OVERHEAD UTILITIES PRIOR TO COMMENCING CONSTRUCTION. NO REPRESENTATION IS MADE THAT ALL EXISTING UTILITIES ARE SHOWN HEREON. THE ENGINEER ASSUMES NO RESPONSIBILITY FOR UTILITIES NOT SHOWN OR UTILITIES NOT SHOWN IN THEIR PROPER LOCATION.

BASIS OF BEARINGS
THE BASIS OF BEARINGS FOR THIS PROJECT IS GRID NORTH AS DEFINED BY THE NEVADA COORDINATE SYSTEM OF 1983 (NCS83), EAST ZONE, (27°01') DETERMINED BY CLARK COUNTY GS CONTROL POINTS 802, 803, 804, AND 805, AS SHOWN ON A RECORD OF SURVEY ON FILE N THE CLARK COUNTY, NEVADA, RECORDER'S OFFICE, IN BOOK 88 OF SURVEYS, AT PAGE 53.

BENCHMARK
PROJECT DATUM: NAVD88
CITY OF LAS VEGAS BENCHMARK 119V0-13NES
NAVD88 ELEVATION: 710.9181 METERS (2332.40 FEET)
ONLY BM 413148, DECATUR BLVD & GRAND TETON DRIVE, 100' SW OF SECTION CORNER, NEXT TO METAL POWER POLE

Avoid cutting underground utility lines. It's costly.
Call before you Dig
1-800-227-2600

Avoid overhead power line contact. It's costly.
Call before you Overhead
1-702-593-6111

SNWA CONSTRUCTION NOTE
CONTRACTOR SHALL FIELD LOCATE AND PROTECT ALL SNWA/SNWS APPURTENANCES INCLUDING, BUT NOT LIMITED TO AV/AR, ACCESS MANWAYS AND CATHODIC PROTECTION SYSTEMS. ALL ABOVE GROUND STRUCTURES AND AT GRADE STRUCTURES MUST BE ADJUSTED TO NEW GRADE AT CONTRACTOR'S EXPENSE. CATHODIC PROTECTION TEST STATIONS, RECTIFIERS, AND AV/AR'S MUST BE RELOCATED TO THE SIDEWALK PER SNWA STANDARDS AT THE CONTRACTOR'S EXPENSE. CONTRACTOR TO NOTIFY SOUTHERN NEVADA WATER AUTHORITY, DEVELOPMENT PLAN REVIEW, AT (702) 862-3444 AT LEAST 48 HOURS PRIOR TO CONSTRUCTION ACTIVITY.

[Signature] 11/4/02
SOUTHERN NEVADA WATER AUTHORITY
DATE

SNWA APPROVAL IS VALID FOR ONE (1) YEAR FROM THE SIGNATURE DATE. IF CONSTRUCTION WITHIN THE EASEMENT OR RESTRICTED PIPE SAFETY ZONE IS NOT COMPLETE, PLANS MUST BE RESUBMITTED TO SNWA FOR APPROVAL.

NO.	7	6	5	4	3	2	1
DATE							
BY							

CITY OF LAS VEGAS

KB HOME
750 PILOT ROAD, SUITE F
LAS VEGAS, NV 89119
(702) 614-2500

STREET PLAN AND PROFILE
BRADLEY ROAD
STA: 89+90.99 TO 97+50.00

IRON MOUNTAIN RANCH VILLAGE 6 UNIT 1

DRAWN BY: MMD NOV. '01
DESIGNED BY: R.M.S. NOV. '01
CHECKED BY: KFN NOV. '01
PROJECT NO: 5918-1 SCALE: 1"=40' HORIZ. 1"=4' VERT.

PROFESSIONAL ENGINEER STATE OF NEVADA
KENNETH F. MCROBSON
NO. 10538
CIVIL
EXPIRES 12-31-03

SHEET
10 of 39
DRAWING NO.
1074-4604-6-1

46584