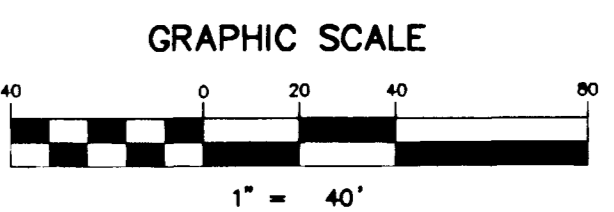
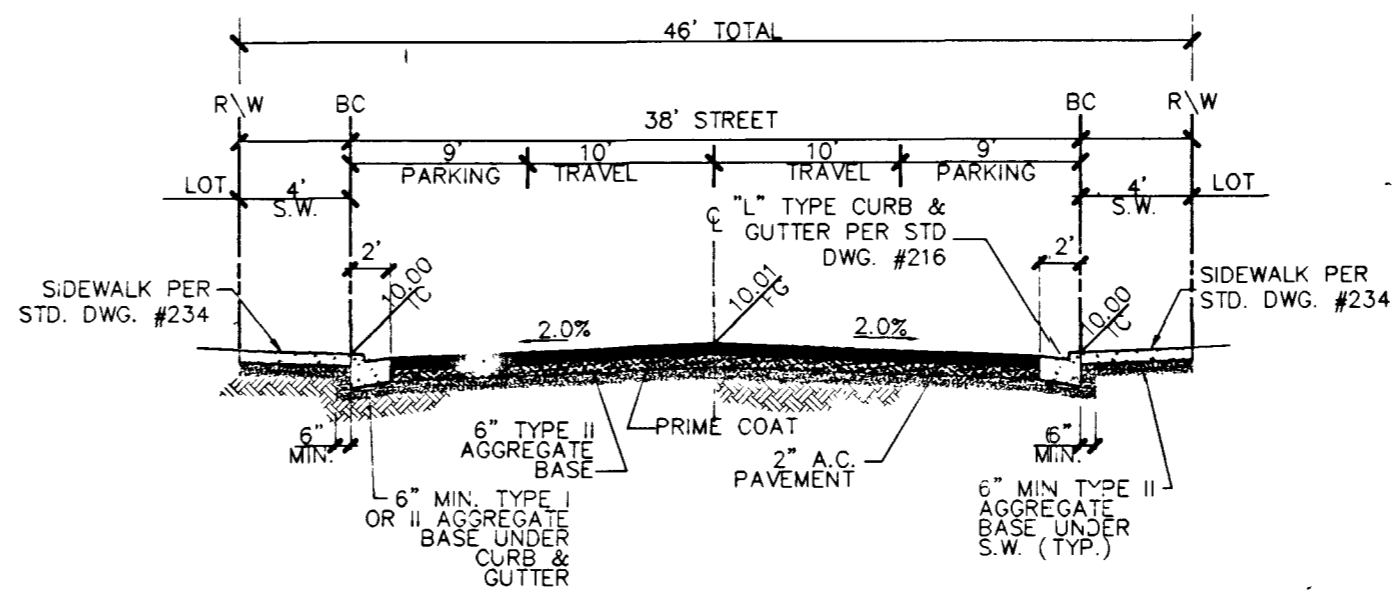


PROFILE SCALE:  
HORIZ. 1" = 40'  
VERT. 1" = 4'



**SIDEWALK RAMP TABLE**  
PER STD. DWG. 235 CASE I

NO.	DIM "A"	DIM "B"	CASE
1	8.0'	8.0'	I



**MAGI RANCH COURT (PUBLIC)**

**CURVE TABLE**

CURVE	LENGTH	RADIUS	DELTA	TANGENT
C1	30.78	20.00	88°10'18"	19.37
C2	32.05	20.00	91°49'42"	20.65
C3	32.05	20.00	91°49'42"	20.65
C4	30.78	20.00	88°10'18"	19.37
C5	26.50	34.00	44°39'01"	13.96
C6	190.36	40.50	269°18'02"	41.00
C7	26.50	34.00	44°39'01"	13.96
C8	30.78	20.00	88°10'18"	19.37
C9	26.50	34.00	44°39'01"	13.96
C10	190.36	40.50	269°18'02"	41.00
C11	26.50	34.00	44°39'01"	13.96
C12	32.05	20.00	91°49'42"	20.65
C13	32.05	20.00	91°49'42"	20.65
C14	30.78	20.00	88°10'20"	19.37
C15	26.50	34.00	44°39'01"	13.96
C16	190.36	40.50	269°18'02"	41.00
C17	26.50	34.00	44°39'01"	13.96
C18	164.69	219.00	43°05'15"	86.45
C19	28.14	20.00	80°36'31"	16.96
C20	290.09	181.00	91°49'42"	186.87
C21	28.14	20.00	80°36'31"	16.96
C22	114.51	219.00	29°57'28"	55.59
C23	28.07	54.00	29°46'54"	14.36
C24	137.40	52.00	151°23'30"	203.84
C25	28.07	54.00	29°46'54"	14.36
C26	54.49	34.00	91°49'42"	35.10
C27	30.78	20.00	88°10'18"	19.37
C28	26.50	34.00	44°39'01"	13.96
C29	190.36	40.50	269°18'02"	41.00

**CURVE TABLE**

CURVE	LENGTH	RADIUS	DELTA	TANGENT
C30	26.50	34.00	44°39'01"	13.96
C31	32.05	20.00	91°49'42"	20.65
C32	32.05	20.00	91°49'42"	20.65
C33	23.64	54.00	29°05'15"	12.01
C34	124.84	52.00	137°33'28"	133.82
C35	23.64	54.00	29°05'15"	12.01
C36	31.42	20.00	90°00'00"	20.00
C37	31.42	20.00	90°00'00"	20.00
C38	372.44	471.00	45°18'20"	196.57
C39	375.97	433.00	44°26'34"	176.89
C40	29.83	20.00	85°26'39"	18.47
C41	33.31	20.00	95°25'07"	21.99
C42	29.83	20.00	85°26'39"	18.47
C43	33.31	20.00	95°25'07"	21.99
C44	156.99	471.00	19°05'51"	79.23
C45	137.81	433.00	18°14'05"	69.49
C46	47.50	219.00	12°25'35"	23.84
C47	28.14	20.00	80°36'31"	16.96
C48	28.14	20.00	80°36'31"	16.96
C49	154.69	219.00	40°28'12"	80.73
C50	226.44	181.00	71°40'46"	130.73
C51	31.42	20.00	90°00'00"	20.00
C52	31.42	20.00	90°00'00"	20.00
C53	34.49	20.00	98°47'51"	23.33
C54	34.49	20.00	98°47'51"	23.33
C55	23.03	150.00	8°47'51"	11.54
C56	23.03	150.00	8°47'51"	11.54
C57	47.12	30.00	90°00'00"	30.00
C58	47.12	30.00	90°00'00"	30.00

**BENCHMARK**  
PROJECT DATUM: NAVD88  
CITY OF LAS VEGAS BENCHMARK 1LV90-13NES  
NAVD88 ELEVATION: 710.9181 METERS (2332.40 FEET)  
ONLY BM 413148, DECATUR BLVD & GRAND TETON DRIVE  
100' SW OF SECTION CORNER, NEXT TO METAL POWER POLE

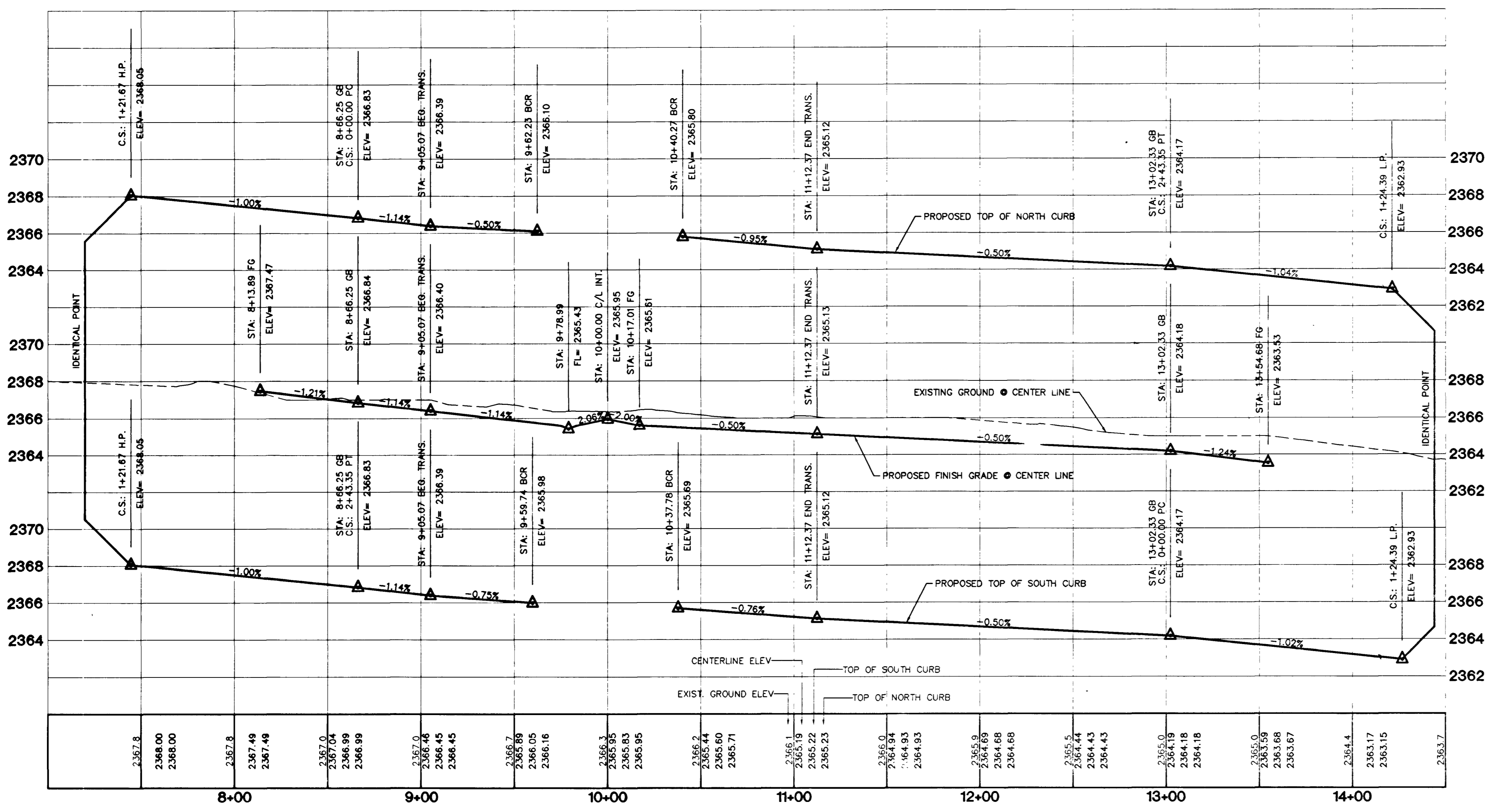
**BASIS OF BEARINGS**  
THE BASIS OF BEARINGS FOR THIS PROJECT IS GRID NORTH AS DEFINED BY THE NEVADA COORDINATE SYSTEM OF 1983 (NCS83), EAST ZONE 12 (2701), DETERMINED BY CLARK COUNTY GIS CONTROL POINTS 802, 803, 804, AND 805, AS SHOWN ON A RECORD OF SURVEY ON FILE IN THE CLARK COUNTY, NEVADA, RECORDER'S OFFICE, IN BOOK 88 OF SURVEYS, AT PAGE 53.

- CONSTRUCTION NOTES**
- (A) CONSTRUCT "L" CURB & GUTTER PER STD. # 216
  - (B) CONSTRUCT SIDEWALK PER STD. # 234
  - (C) CONSTRUCT CROSS GUTTER PER STD. # 228
  - (D) CONSTRUCT SIDEWALK RAMP PER STD. # 235
  - (E) CONSTRUCT SIDEWALK DRAIN PER STD. # 236
  - (F) CUT & MATCH EXIST. A.C.
  - (G) CONSTRUCT "A" TYPE ISLAND CURB PER STD. # 219

**DISCLAIMER NOTE**  
UTILITY LOCATIONS SHOWN HEREON ARE APPROXIMATE ONLY. IT SHALL BE THE CONTRACTOR'S RESPONSIBILITY TO DETERMINE THE EXACT HORIZONTAL AND VERTICAL LOCATION OF ALL EXISTING UNDERGROUND AND OVERHEAD UTILITIES PRIOR TO COMMENCING CONSTRUCTION. NO REPRESENTATION IS MADE THAT ALL EXISTING UTILITIES ARE SHOWN HEREON. THE ENGINEER ASSUMES NO RESPONSIBILITY FOR UTILITIES NOT SHOWN OR UTILITIES NOT SHOWN IN THEIR PROPER LOCATION.

Call before you Dig  
1-800-227-2600

Call before you Overhead  
1-702-593-6111



**CITY OF LAS VEGAS**  
2727 SOUTH RAINBOW BOULEVARD LAS VEGAS, NEVADA 89146-5148  
PH: (702) 873-7550 FAX (702) 362-2597  
PLANNERS • LAND SURVEYORS

**KB HOME**  
750 PILOT ROAD, SUITE F  
LAS VEGAS, NV 89119  
(702) 814-2600

**STREET PLAN & PROFILE**  
**MAGI RANCH COURT**  
STA: 4+19.88 - 14+44.07

**IRON MOUNTAIN RANCH**  
VILLAGE 6  
UNIT 1

DRAWN BY: R.M.S. JUN. 02  
DESIGNED BY: R.M.S. JUN. 02  
CHECKED BY: KEN JUN. 02  
PROJECT NO: 5974-1 SCALE: 1"=40' HORIZ. 1"=4' VERT.

**PROFESSIONAL ENGINEER**  
KENNETH NICHOLSON  
CIVIL ENGINEER  
No. 059870001  
EXPIRES 12-31-03  
SHEET  
**S14**  
23 OF 39 SHEETS  
DRAWING NO.  
107-4604-6-1

46597 48092