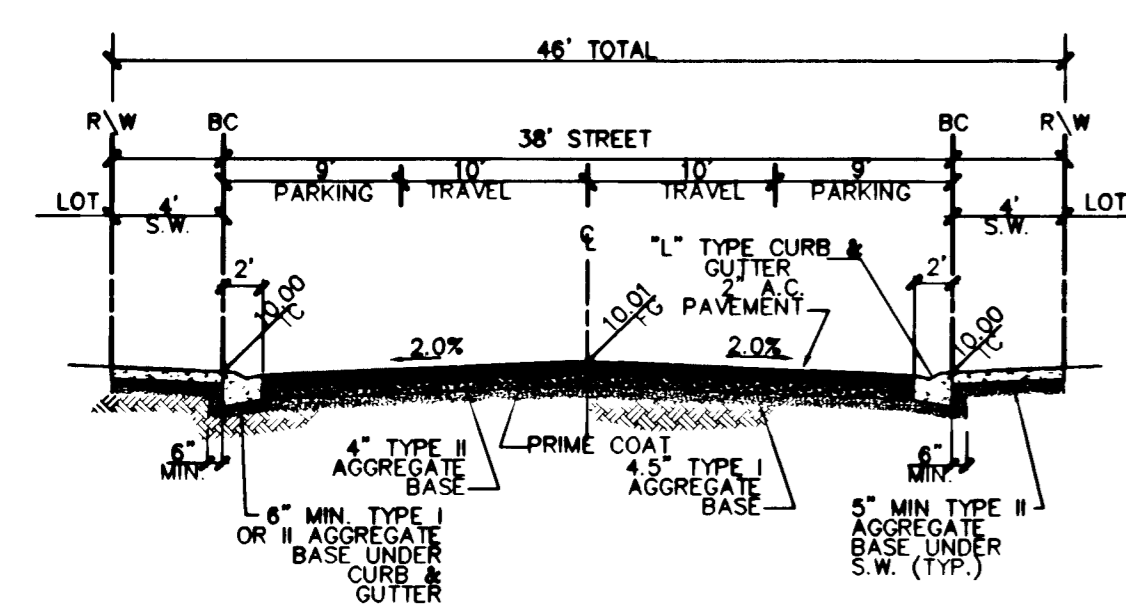
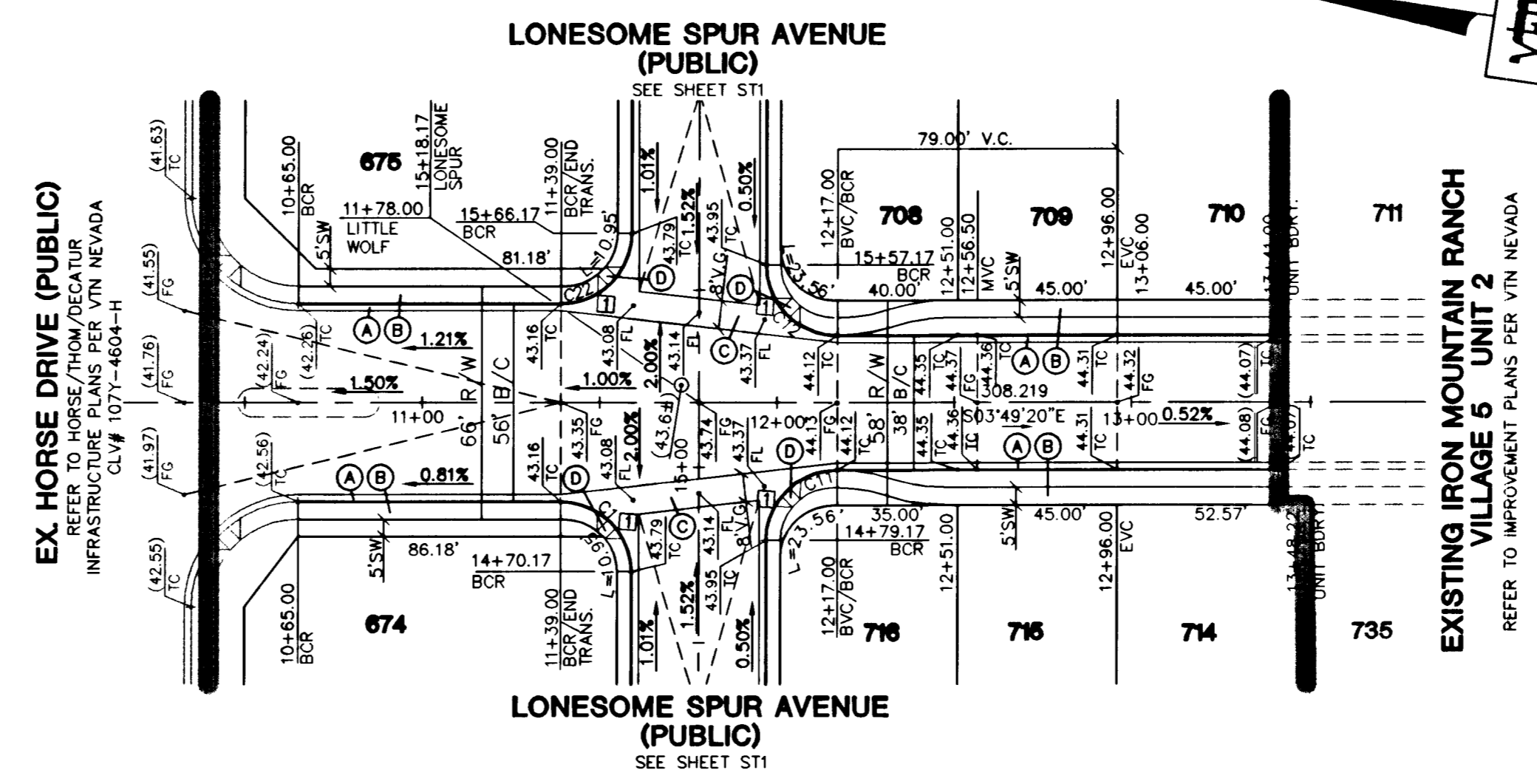


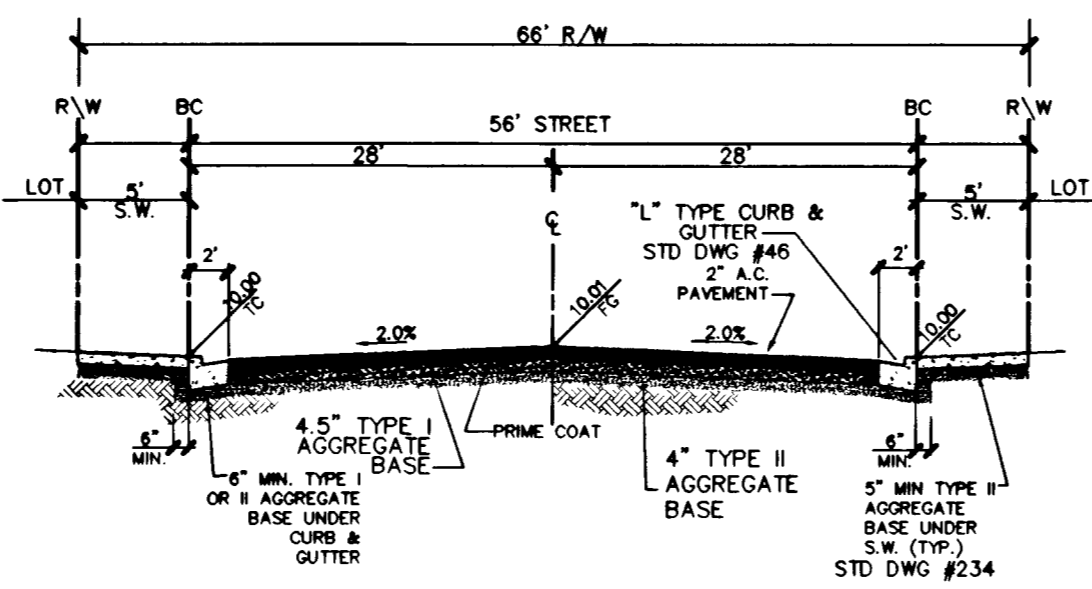
VICKERS CANYON STREET (PUBLIC)



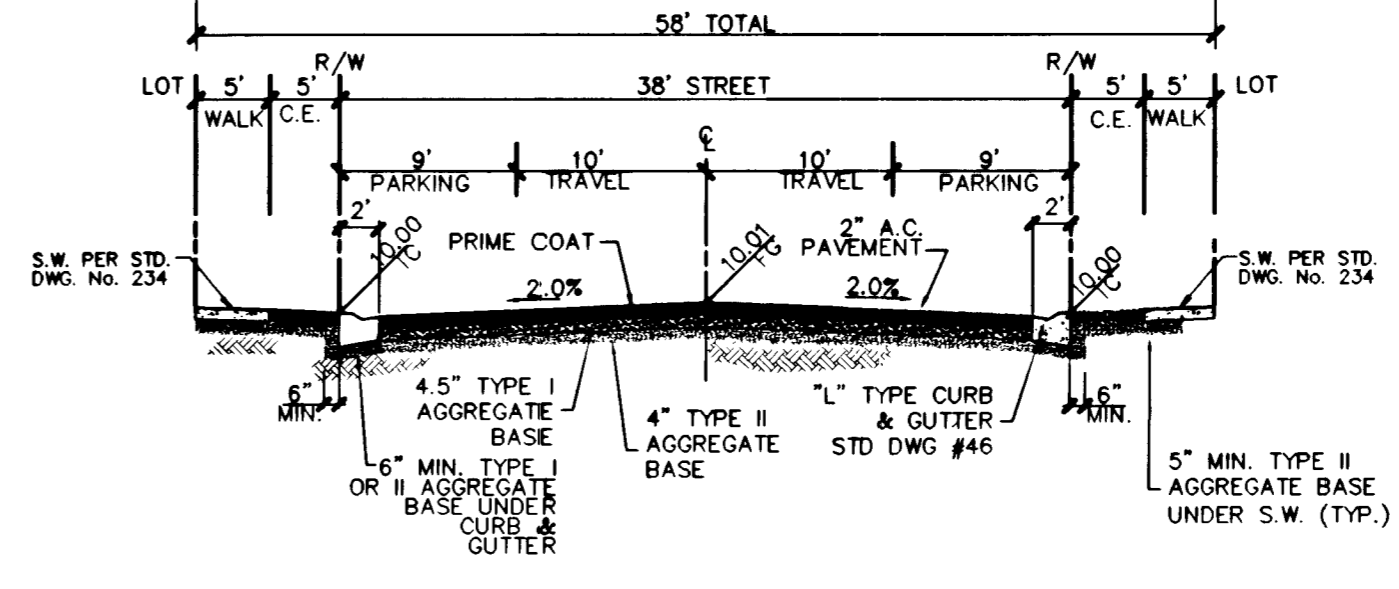
TYPICAL 46' STREET SECTION (PUBLIC)
(N.T.S.) STD DWG NO. 206



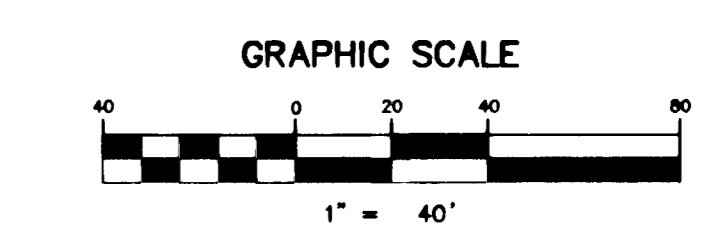
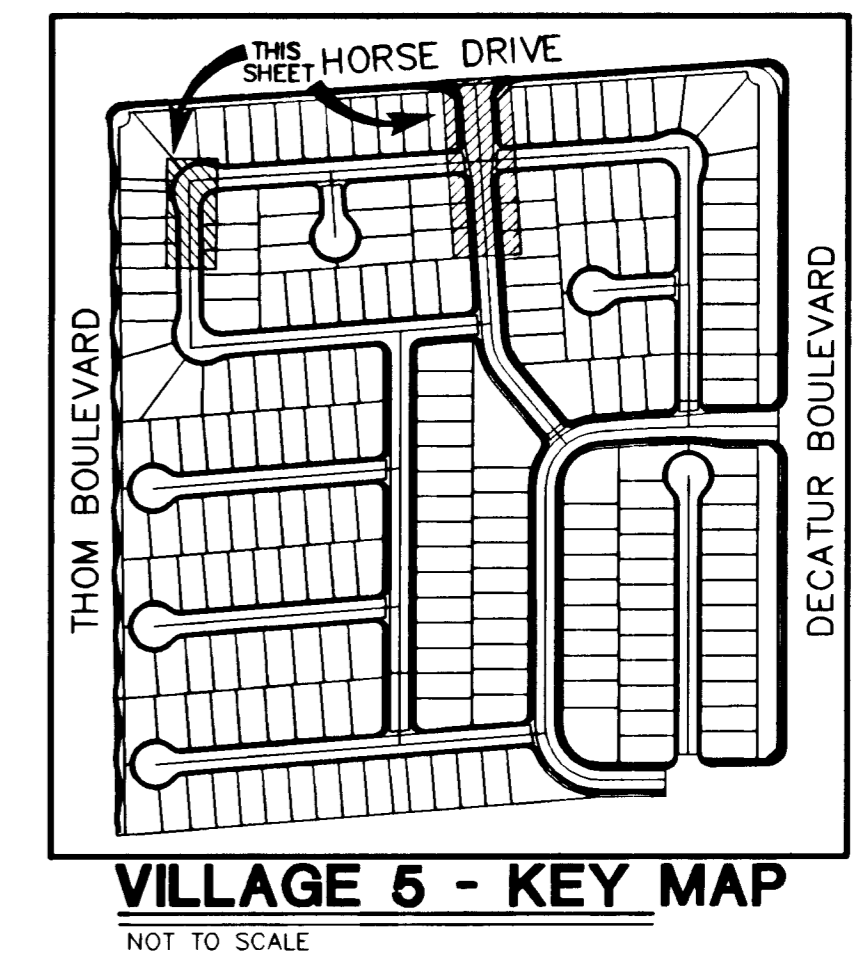
LITTLE WOLF STREET (PUBLIC)



TYPICAL 66' STREET SECTION (PUBLIC)
(N.T.S.) STD DWG NO. 206



TYPICAL 58' STREET SECTION (PUBLIC)
(N.T.S.) STD DWG NO. 206



PROFILE SCALE:
HORIZ. 1" = 40'
VERT. 1" = 4'

CURVE TABLE				
CURVE	LENGTH	RADIUS	DELTA	TANGENT
C1	31.42	20.00	90°00'00"	20.00
C2	23.64	54.00	25°05'15"	12.01
C3	124.31	52.00	136°58'11"	131.91
C4	23.64	54.00	25°05'15"	12.01
C5	51.50	34.00	86°47'40"	32.15
C6	29.85	19.00	90°00'00"	19.00
C7	19.85	23.50	48°23'22"	10.56
C8	195.64	40.50	278°48'45"	35.97
C9	19.85	23.50	48°23'22"	10.56
C10	29.85	19.00	90°00'00"	19.00
C11	31.42	20.00	90°00'00"	20.00
C12	31.42	20.00	90°00'00"	20.00
C13	55.67	34.00	83°48'40"	36.34
C14	28.58	19.00	88°17'20"	17.78
C15	19.85	23.50	48°23'22"	10.56
C16	195.64	40.50	278°48'45"	35.97
C17	19.85	23.50	48°23'22"	10.56
C18	31.11	19.00	93°48'40"	20.31
C19	23.64	54.00	25°05'15"	12.01
C20	130.68	52.00	143°59'11"	158.97
C21	23.64	54.00	25°05'15"	12.01
C22	31.42	20.00	90°00'00"	20.00

SIDEWALK RAMP TABLE			
NO.	DIM "A"	DIM "B"	CASE
1	8.0'	8.0'	I
2	9.5'	4.5'	I

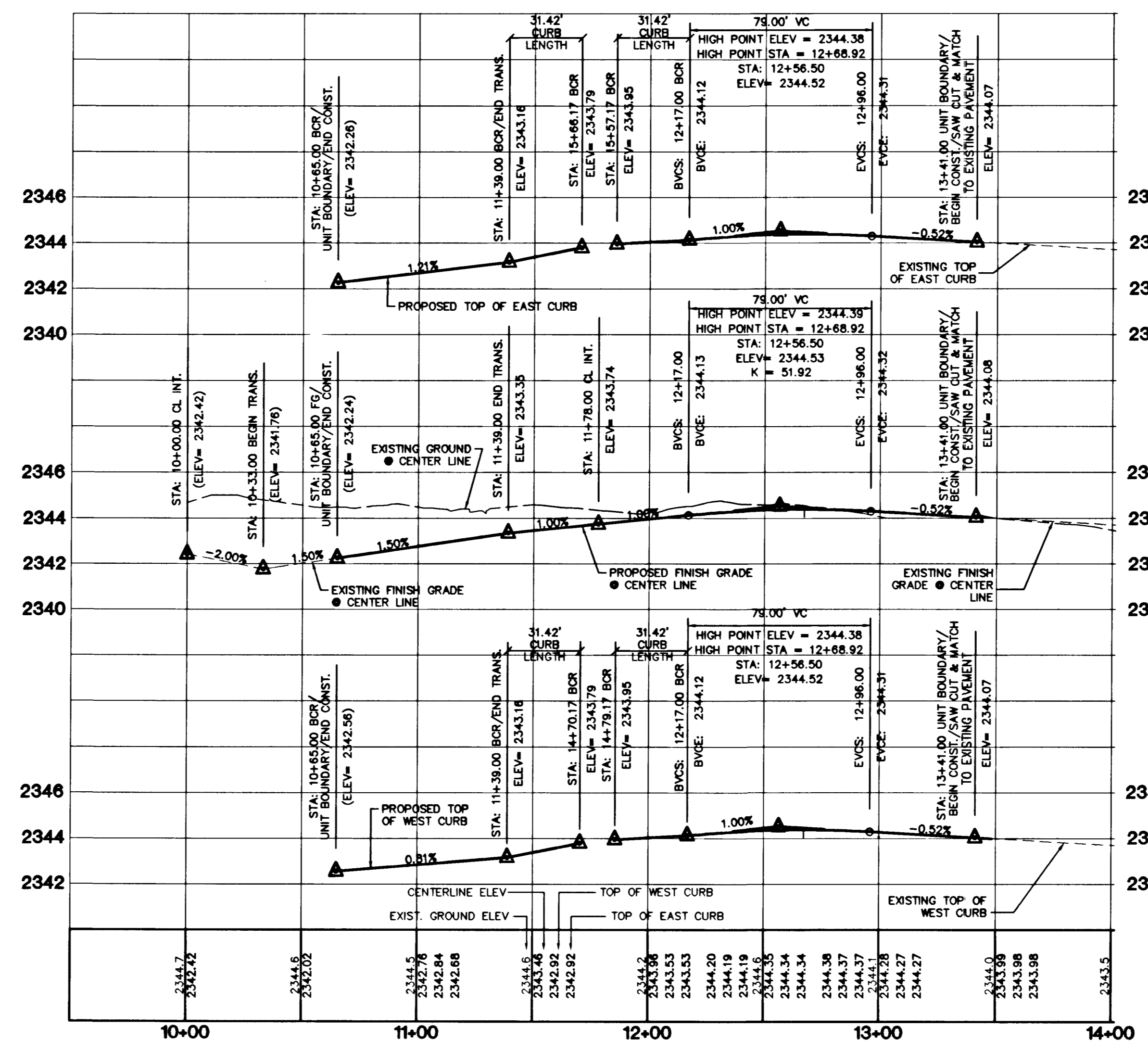
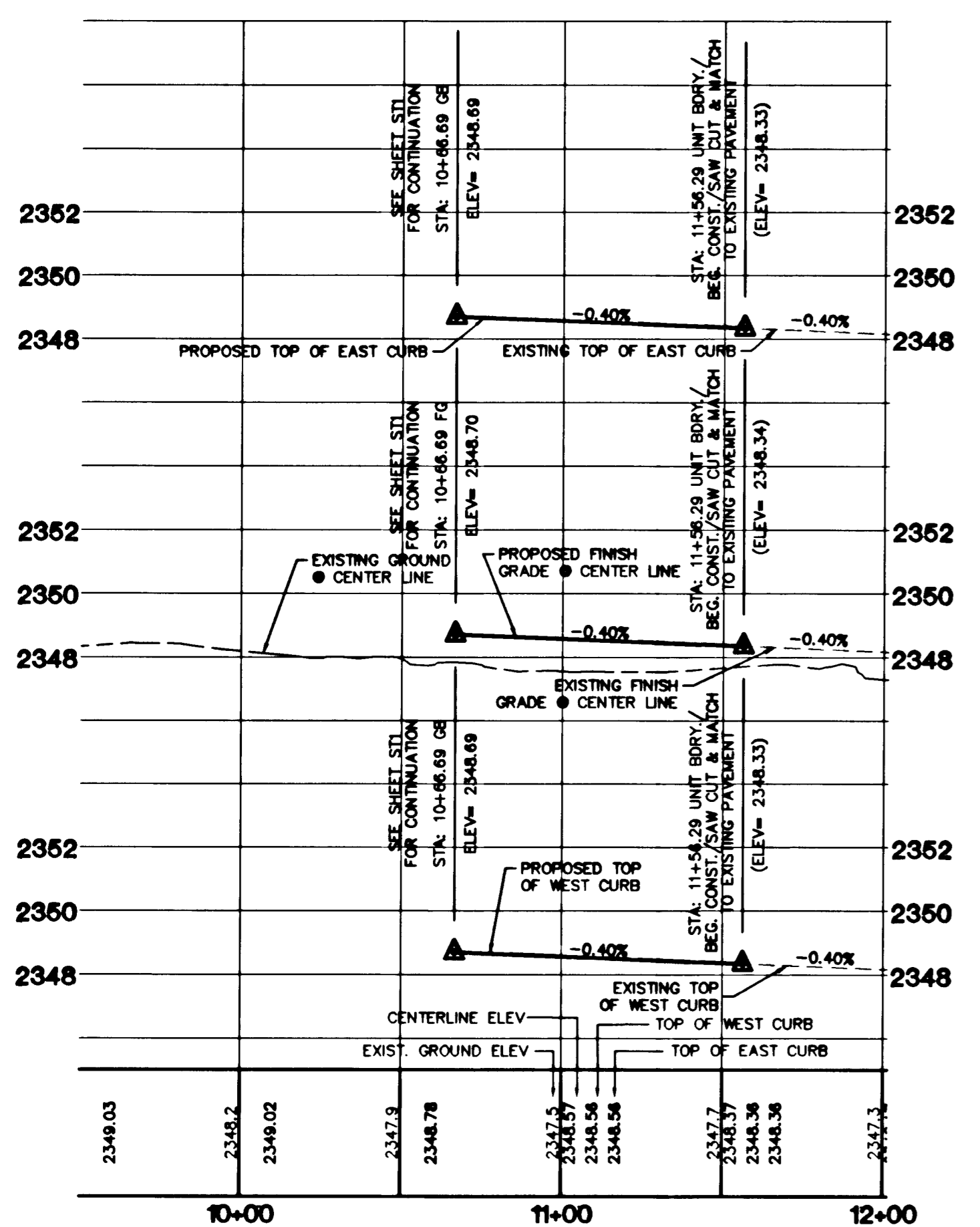
- CONSTRUCTION NOTES**
- (A) CONSTRUCT "L" CURB & GUTTER PER STD. # 216
 - (B) CONSTRUCT SIDEWALK PER STD. # 234
 - (C) CONSTRUCT CROSS GUTTER PER STD. # 226
 - (D) CONSTRUCT SIDEWALK RAMP PER STD. # 235
 - (E) CONSTRUCT SIDEWALK DRAIN PER STD. # 236
 - (F) CUT & MATCH EXIST. A.C.
 - (G) CONSTRUCT "A" TYPE ISLAND CURB PER STD. # 219

PROJECT BENCHMARK
PROJECT DATUM: NAVD88
(OLD) CITY OF LAS VEGAS BENCHMARK 11V90-13NES
NAVD88 ELEVATION: 710.9688 METERS (2332.54 FEET)
PROJECT DESIGNED USING OLD BENCHMARK
(NEW) CITY OF LAS VEGAS BENCHMARK 11V90-13NES
NAVD88 ELEVATION: 710.9181 METERS (2332.40 FEET)
(-0.14 FEET) TO GET NEW PUBLISHED DATUM
ONLY BM 413148, NAVD 88 ELEV=710.953
METERS (2330.52 FEET) DIAMETER CONCRETE MONUMENT
77 FEET SOUTH & 54 FEET WEST OF N.E. CORNER
SEC. 13T19R60E TO EAST OF LARGE POWER POLE.

BASIS OF BEARINGS
THE BASIS OF BEARINGS FOR THIS PROJECT IS GRID NORTH AS DEFINED BY THE NEVADA COORDINATE SYSTEM OF 1983 (NCS83). EAST ZONE. DETERMINED BY CLARK COUNTY GIS CONTROL POINTS 802, 803, 804, AND 805, AS SHOWN ON A RECORD OF SURVEY ON FILE IN THE CLARK COUNTY, NEVADA, RECORDER'S OFFICE, IN BOOK 88 OF SURVEYS, AT PAGE 53.

Call before you Dig
1-800-227-2600

Call before you Overhead
1-702-593-6111



DISCLAIMER NOTE
UTILITY LOCATIONS SHOWN HEREON ARE APPROXIMATE ONLY. IT SHALL BE THE CONTRACTOR'S RESPONSIBILITY TO DETERMINE THE EXACT HORIZONTAL AND VERTICAL LOCATION OF ALL EXISTING UNDERGROUND AND OVERHEAD UTILITIES PRIOR TO COMMENCING CONSTRUCTION. NO REPRESENTATION IS MADE THAT ALL EXISTING UTILITIES ARE SHOWN HEREON. THE ENGINEER ASSUMES NO RESPONSIBILITY FOR UTILITIES NOT SHOWN OR UTILITIES NOT SHOWN IN THEIR PROPER LOCATION.

7	6	5	4	3	2	1	
REV	DATE	BY	REVISION				

CITY OF LAS VEGAS
2727 SOUTH RAINBOW BOULEVARD LAS VEGAS, NEVADA 89146-5148
PH. (702) 873-7500 FAX (702) 362-2597
CONSULTING ENGINEERS • PLANNERS • LAND SURVEYORS

KB HOME
750 PILOT ROAD, SUITE F
LAS VEGAS, NV 89123
(702) 814-2500

STREET PLAN & PROFILE
VICKERS CANYON STREET
LITTLE WOLF STREET

IRON MOUNTAIN RANCH
VILLAGE 5
UNIT 3

DRAWN BY: AUGUST '02
DESIGNED BY: AUGUST '02
CHECKED BY: AUGUST '02
PROJECT NO.: 5819-3
SCALE: 1"=40' HORIZ.
1"=4' VERT.

PROFESSIONAL ENGINEER
KENNETH J. HOLSON
CIVIL ENGINEER
NO. 10839 VOTER REG.
EXPIRES 12-31-03

SHEET
ST4
13 OF 14 SHEETS
DRAWING NO.
1674-4604-5-3