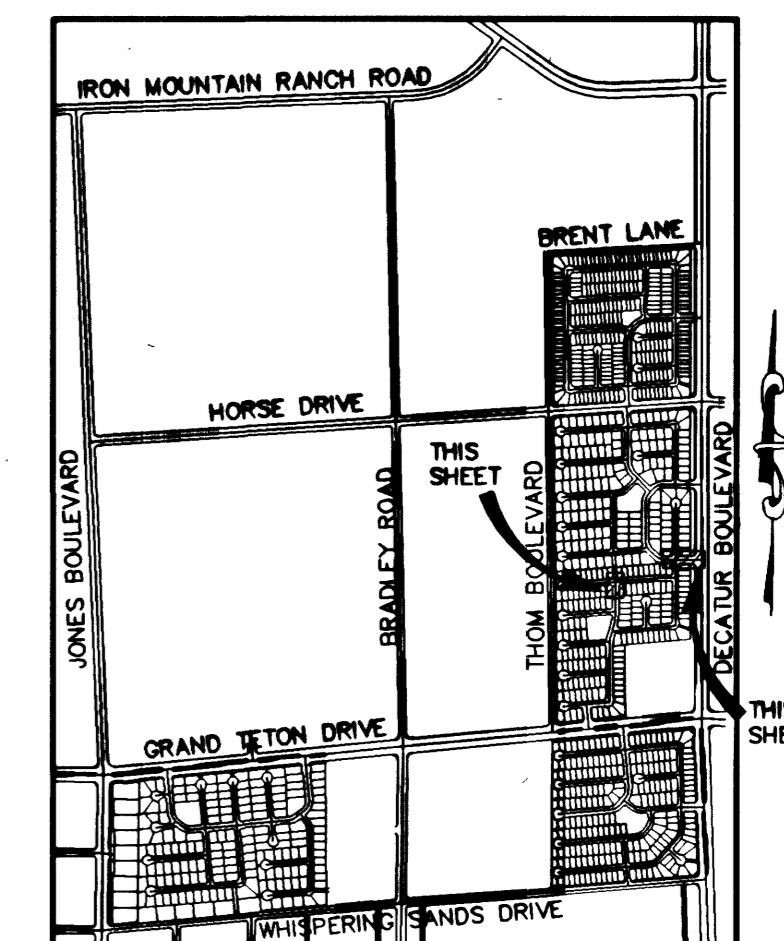
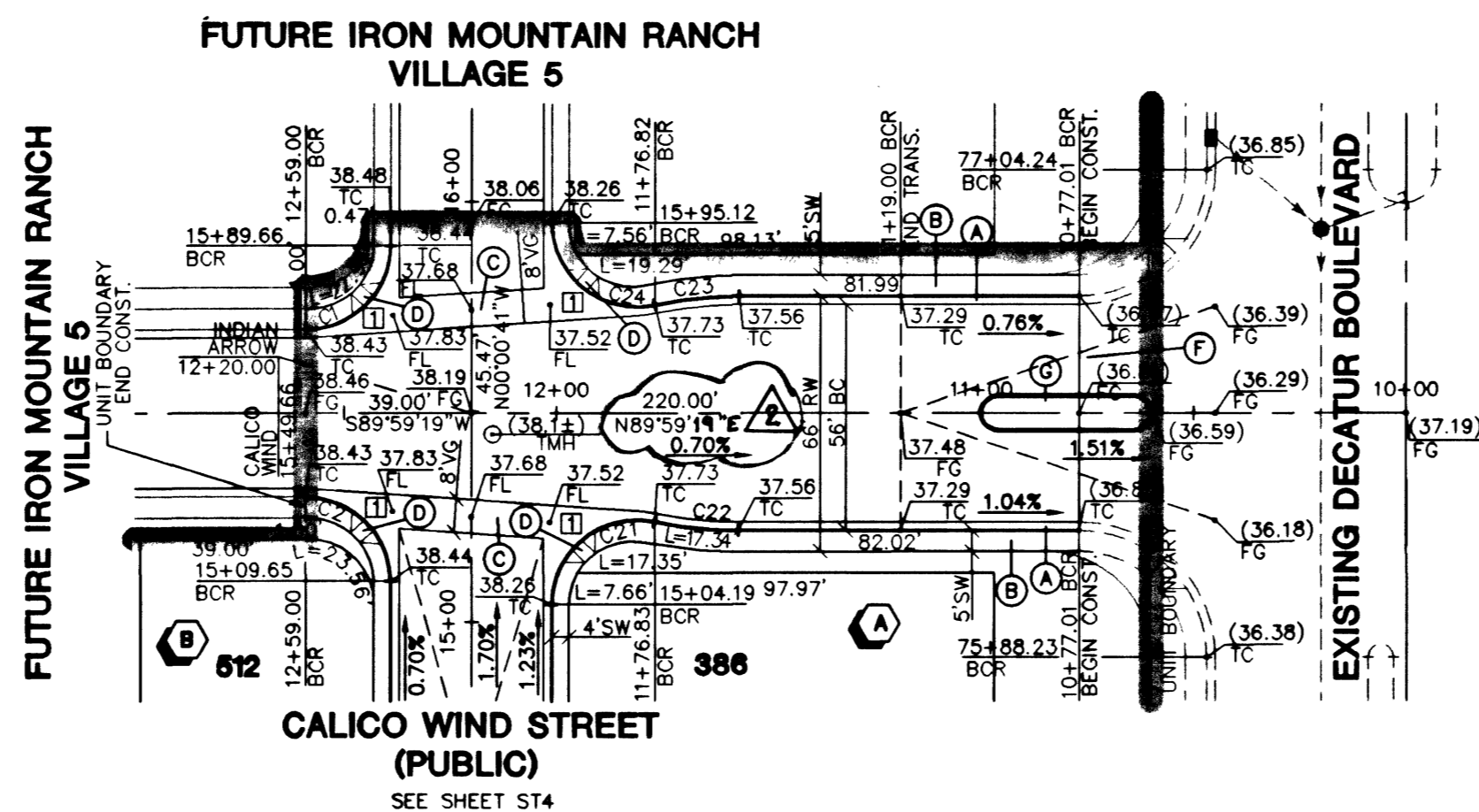
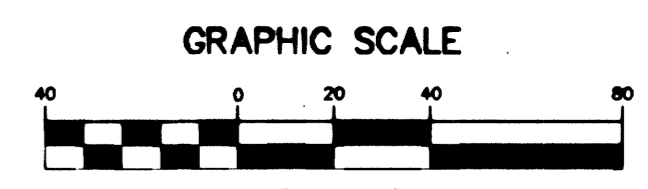


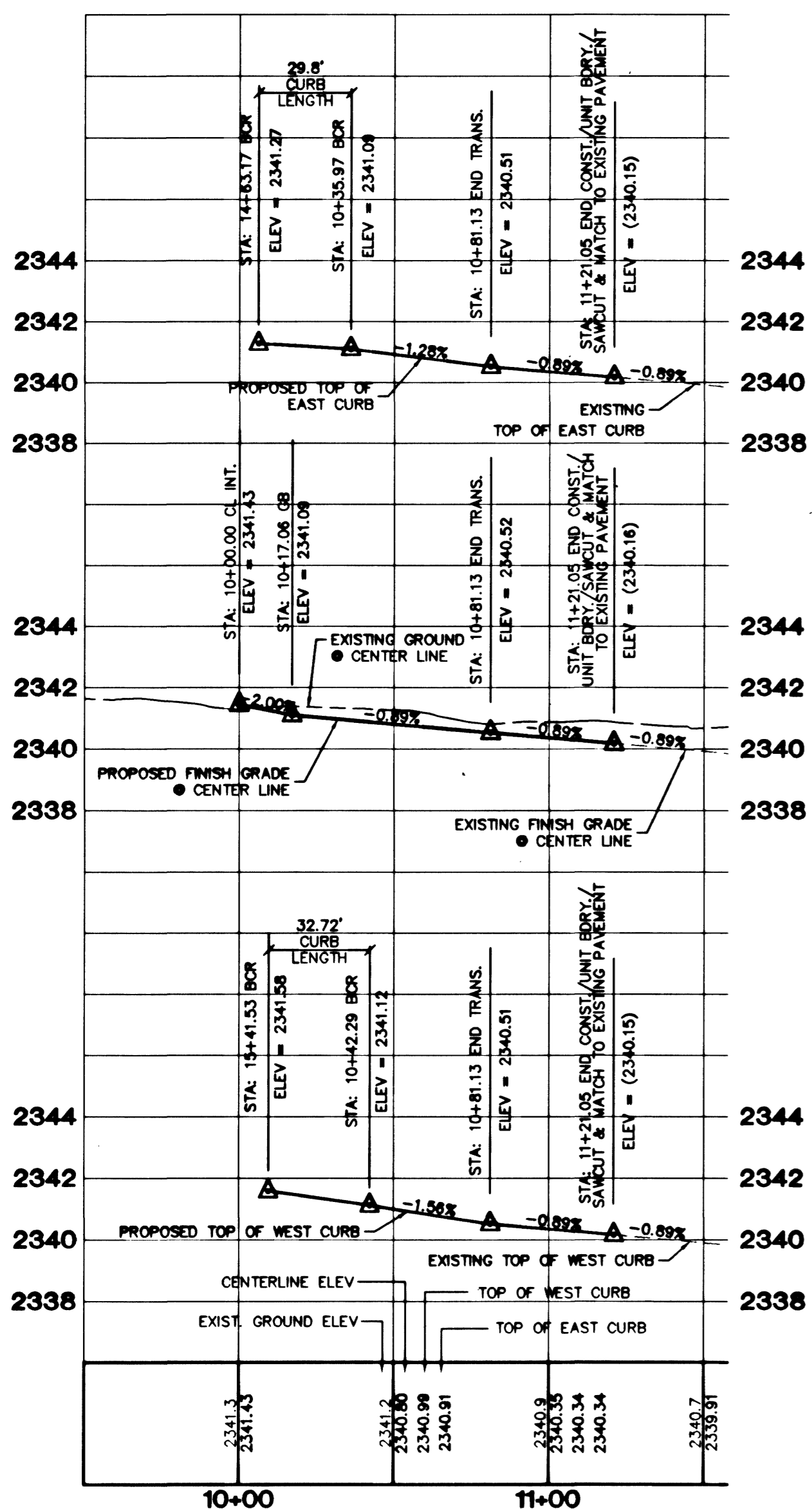
EXISTING IRON MOUNTAIN RANCH VILLAGE 4 - UNIT 1  
REFER TO IMPROVEMENT PLANS PER VTN NEVADA



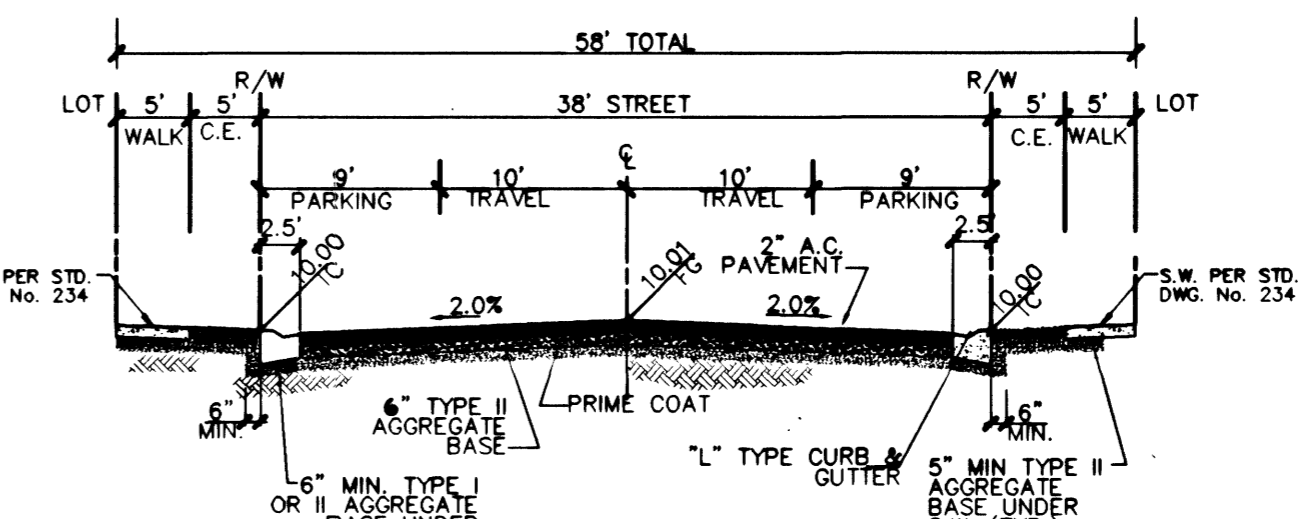
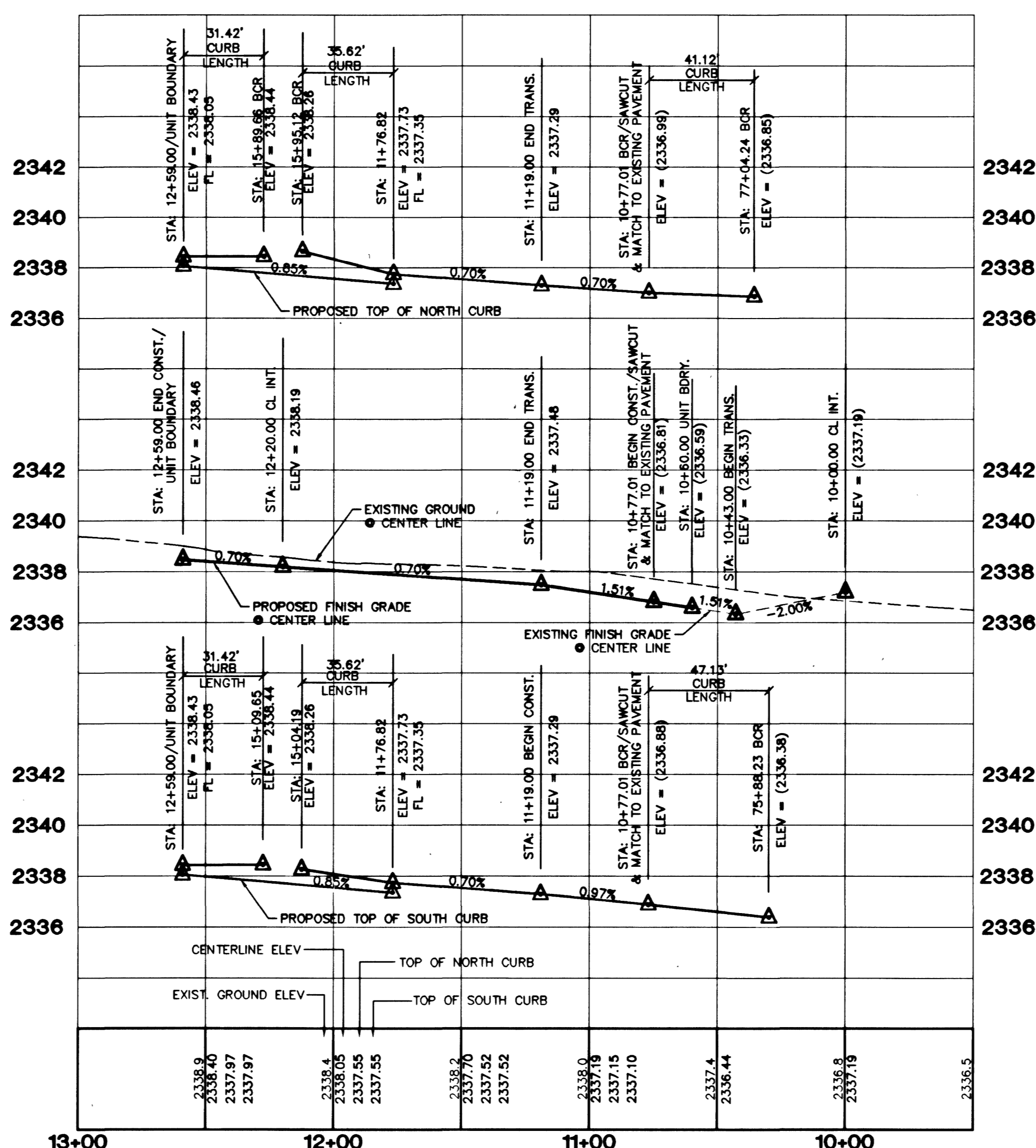
PROFILE SCALE:  
HORIZ. 1" = 40'  
VERT. 1" = 4'



ROUNDUP RIDGE STREET (PUBLIC)

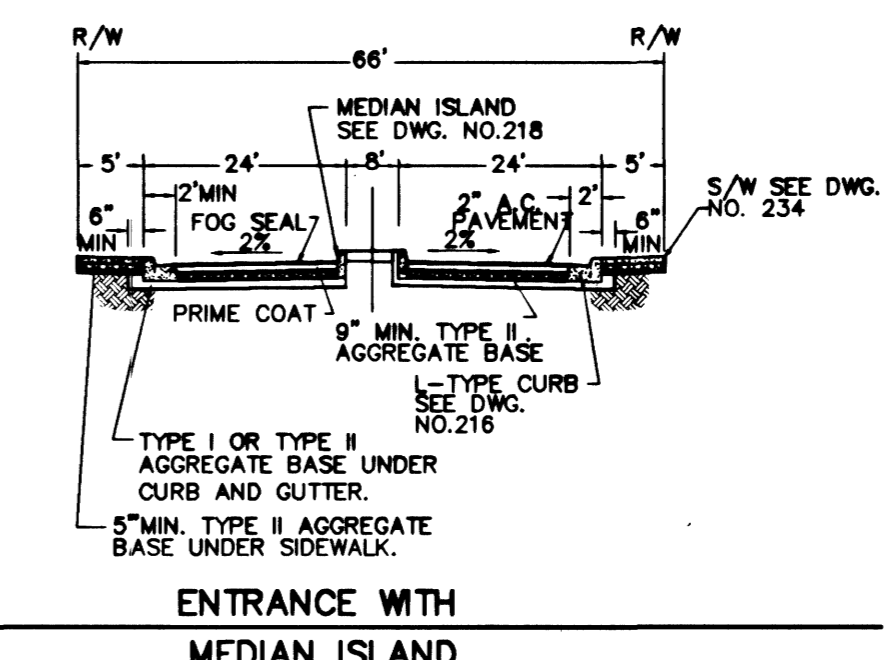


INDIAN ARROW AVENUE (PUBLIC)



TYPICAL 58' STREET SECTION (PUBLIC)

(N.T.S.)



ENTRANCE WITH MEDIAN ISLAND

**SIDEWALK RAMPS TABLE**  
PER STD. DWG 235 CASE I

NO.	DIM "A"	DIM "B"	CASE
1	8.0'	8.0'	I

**CURVE TABLE**

CURVE	LENGTH	RADIUS	DELTA	TANGENT
C1	31.42	20.00	90°00'00"	20.00
C2	31.42	20.00	90°00'21"	20.00
C3	31.42	20.00	90°00'00"	20.00
C4	40.11	496.00	4°38'01"	20.07
C5	26.50	34.00	84°39'01"	13.96
C6	190.36	40.50	28°18'02"	41.00
C7	26.50	34.00	44°39'01"	13.96
C8	31.38	20.00	94°38'01"	20.60
C9	28.31	20.00	85°21'59"	17.52
C10	37.04	458.00	4°38'01"	18.53
C11	31.42	20.00	90°00'00"	20.00
C12	50.41	34.00	84°38'57"	31.13
C13	33.18	20.00	85°03'03"	21.85
C14	26.50	34.00	44°39'01"	13.96
C15	190.36	40.50	28°18'02"	41.00
C16	26.50	34.00	44°39'01"	13.96
C17	29.65	20.00	84°38'57"	18.31
C18	23.64	24.00	23°05'15"	12.01
C19	122.64	52.00	135°07'28"	125.93
C20	23.64	54.00	25°05'15"	12.01
C21	35.62	20.00	102°01'54"	24.71
C22	19.96	95.00	12°02'15"	10.02
C23	19.98	95.00	12°03'05"	10.03
C24	35.62	20.00	102°03'05"	24.72

**PROJECT BENCHMARK**

PROJECT DATUM: NAVD88  
CITY OF LAS VEGAS BENCHMARK 1LV90-13NFS  
NAVD88 ELEVATION: 710.9608 METERS (2332.54 FEET)  
ONLY BM 413148, NAVD 88 ELEV=710.953 METERS (2332.52 FEET) 1" DIAMETER CONCRETE MONUMENT 77 FEET SOUTH & 54 FEET WEST OF N.E. CORNER SEC. 13T19R60E 10' EAST OF LARGE POWER POLE.

**BASES OF BEARINGS**

THE BASIS OF BEARINGS FOR THIS PROJECT IS GRID NORTH AS DEFINED BY THE NEVADA COORDINATE SYSTEM OF 1983 (NAD83) EAST ZONE (17N), DETERMINED BY CLARK COUNTY GIS CONTROL POINTS 802, 803, 804, AND 805 AS SHOWN ON A RECORD OF SURVEY ON FILE IN THE CLARK COUNTY, NEVADA, RECORDER'S OFFICE, IN BOOK 88 OF SURVEYS, AT PAGE 53.

- CONSTRUCTION NOTES**
- (A) CONSTRUCT "L" CURB & GUTTER PER STD. # 216
  - (B) CONSTRUCT SIDEWALK PER STD. # 234
  - (C) CONSTRUCT CROSS GUTTER PER STD. # 228
  - (D) CONSTRUCT SIDEWALK RAMP PER STD. # 235
  - (E) CONSTRUCT SIDEWALK DRAIN PER STD. # 236
  - (F) CUT & MATCH EXIST. A.C.
  - (G) CONSTRUCT "A" TYPE IS AND CURB PER STD. # 219

NOTE: CONTRACTOR SHALL VERIFY HORIZONTAL AND VERTICAL LOCATION OF EXISTING UTILITIES AND NOTIFY THE DESIGN ENGINEER IMMEDIATELY OF ANY DISCREPANCIES PRIOR TO CONSTRUCTION.

Call before you Dig  
1-800-227-2600

Call before you OVERHEAD  
1-702-593-6111

**KB HOME**  
1400 PEGASUS RD., SUITE F  
LAS VEGAS, NV 89119  
(702) 614-2500

**STREET PLAN & PROFILE**  
ROUNDUP RIDGE STREET  
INDIAN ARROW DRIVE

**IRON MOUNTAIN RANCH VILLAGE 4 UNIT 2**

2727 SOUTH RAINBOW BOULEVARD LAS VEGAS, NEVADA 89146-5148  
PH. (702) 873-7500 FAX. (702) 362-2397

**VTN nevada**  
CONSULTING ENGINEERS • PLANNERS • LAND SURVEYORS

DRAWN BY: FPR / KOS	NOV. '01
DESIGNED BY: FPR / KOS	NOV. '01
CHECKED BY: KRN	NOV. '01
PROJECT NO: 5818-2	SCALE: 1"=40' HORIZ 1"=4' VERT.

SHEET  
ST5  
14 OF 23 SHEETS  
DRAWING NO.  
107X-4604-4-2

15720\UNIT2\57205202.DWG (86-5708)