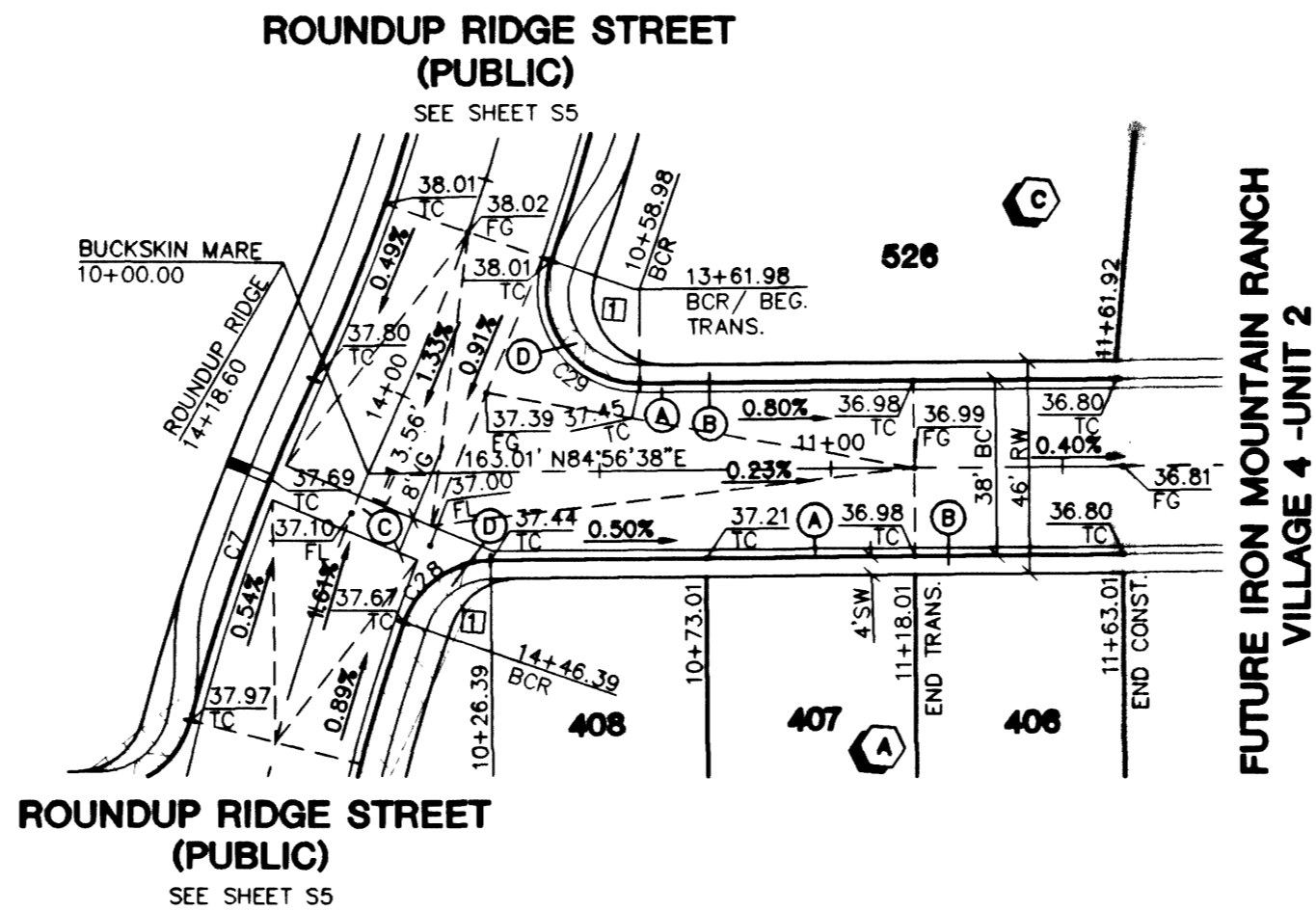
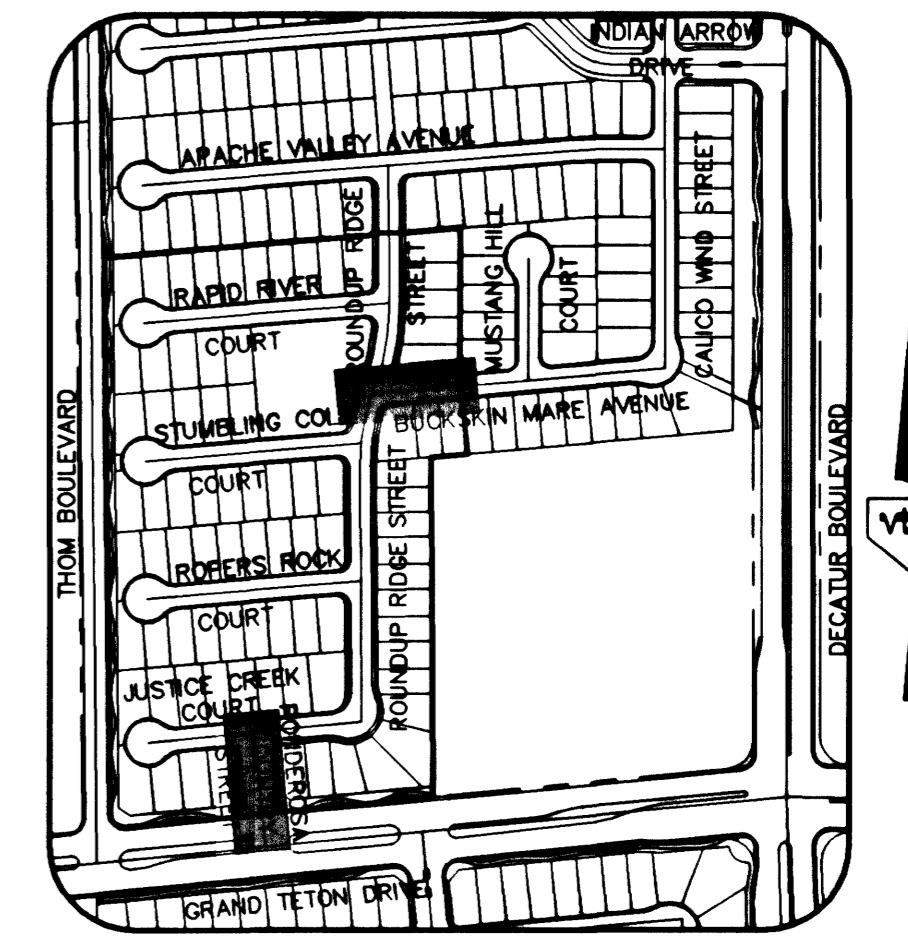


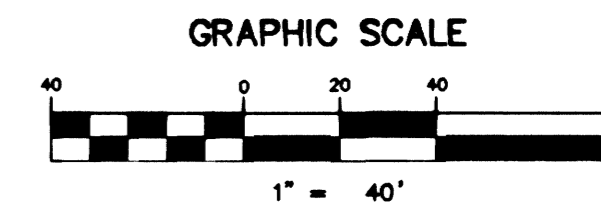
PONDEROSA COUNTRY STREET (PUBLIC)



BUCKSKIN MARE AVENUE (PUBLIC)



PROFILE SCALE:
HORIZ. 1" = 40'
VERT. 1" = 4'

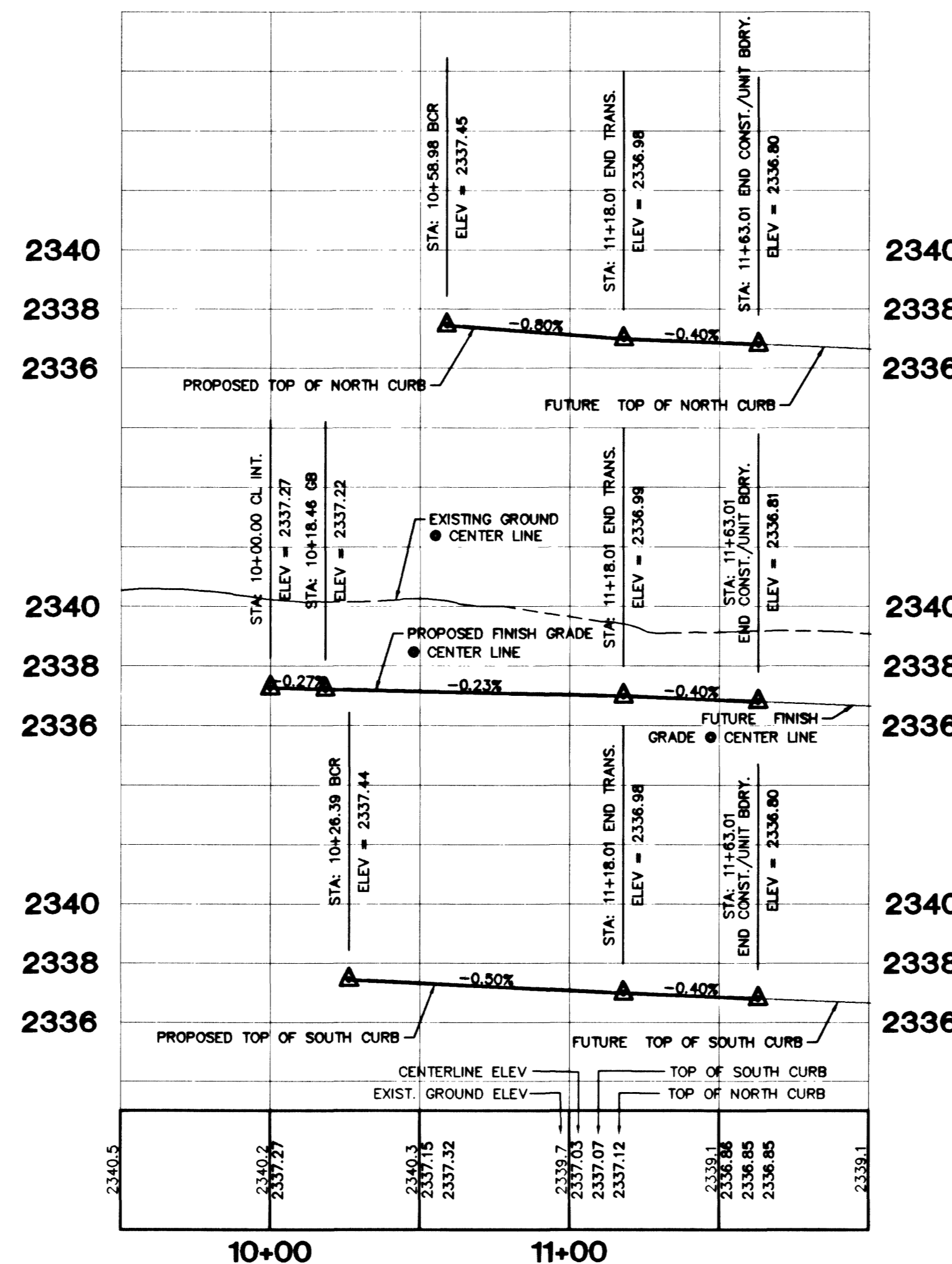
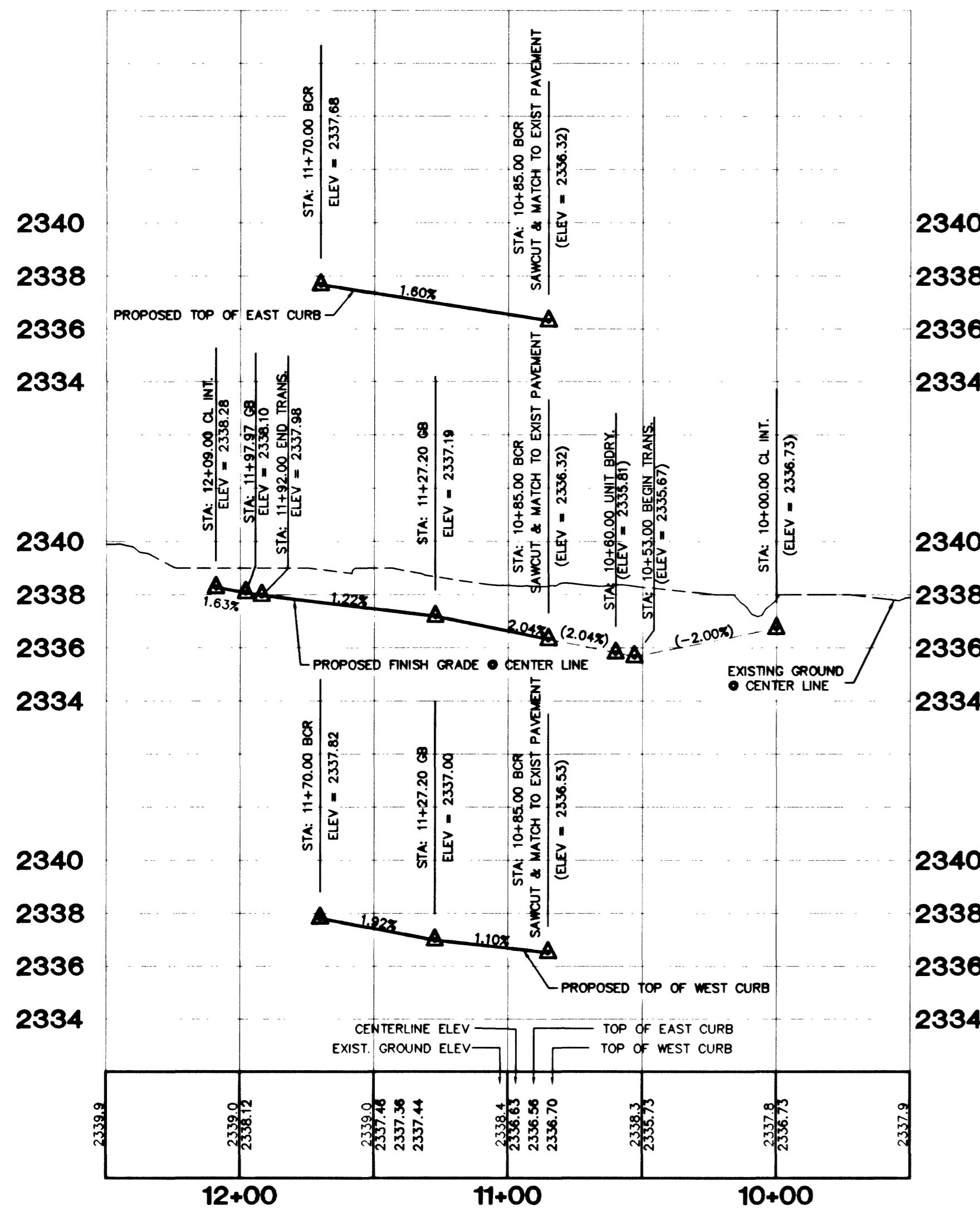
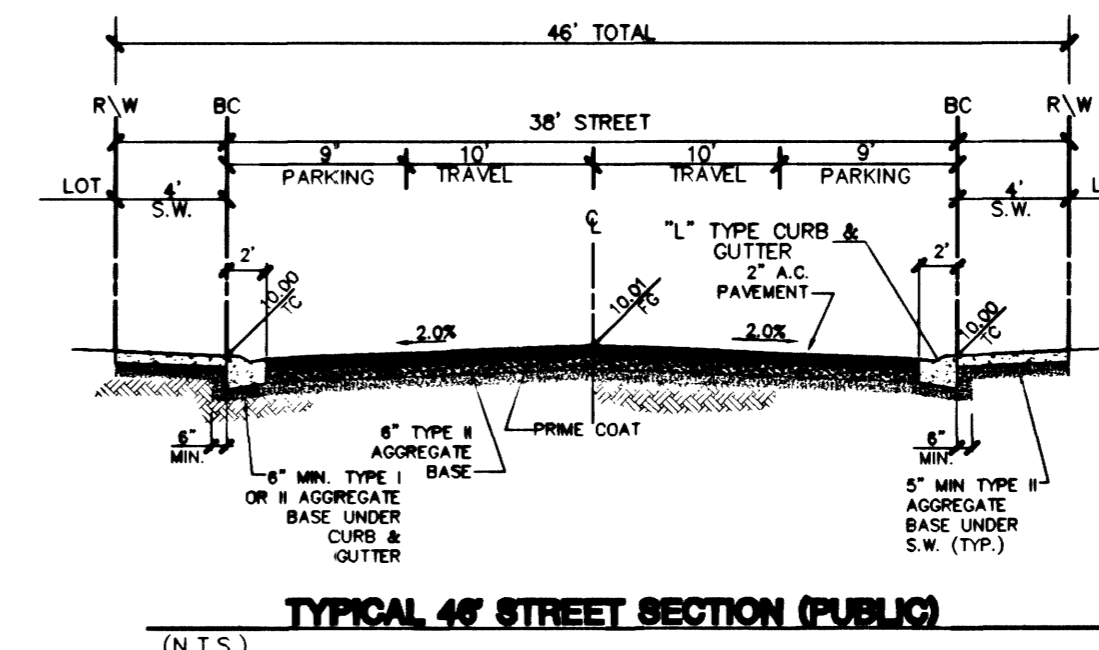


WALKWAY RAMP TABLE

NO.	DM "A"	DM "B"	CASE
1	8.0'	8.0'	I
2	4.5'	12.0'	I

CURVE TABLE

CURVE	LENGTH	RADIUS	DELTA	TANGENT
C1	28.31	19.00	62°15'00"	17.52
C2	26.50	34.00	44°39'01"	13.96
C3	190.36	40.50	269°18'02"	41.00
C4	26.50	34.00	44°39'01"	13.96
C5	32.94	19.00	89°19'50"	22.38
C6	106.10	381.00	15°57'18"	53.39
C7	78.78	419.00	10°46'21"	39.51
C8	26.35	20.00	252°21'41"	15.48
C9	26.50	34.00	44°39'01"	13.96
C10	190.36	40.50	269°18'02"	41.00
C11	26.50	34.00	44°39'01"	13.96
C12	32.92	20.00	94°19'21"	21.57
C13	29.91	20.00	85°40'39"	18.55
C14	26.50	34.00	44°39'01"	13.96
C15	190.36	40.50	269°18'02"	41.00
C16	26.50	34.00	44°39'01"	13.96
C17	32.92	20.00	94°19'21"	21.57
C18	55.53	37.50	84°50'17"	34.27
C19	26.50	34.00	44°39'01"	13.96
C20	190.36	40.50	269°18'02"	41.00
C21	26.50	34.00	44°39'01"	13.96
C22	31.42	20.00	90°00'00"	20.00
C23	31.42	20.00	90°00'00"	20.00
C24	23.64	54.00	25°05'15"	12.01
C25	122.53	52.00	135°00'46"	125.58
C26	23.64	54.00	25°05'15"	12.01
C27	100.01	381.00	15°32'25"	50.30
C28	24.51	20.00	70°13'12"	14.08
C29	38.23	20.00	109°32'06"	28.32
C30	105.92	419.00	14°29'03"	53.24



- CONSTRUCTION NOTES**
- (A) CONSTRUCT "L" CURB & GUTTER PER STD. # 216
 - (B) CONSTRUCT SIDEWALK PER STD. # 234
 - (C) CONSTRUCT CROSS GUTTER PER STD. # 228
 - (D) CONSTRUCT SIDEWALK RAMP PER STD. # 235
 - (E) CONSTRUCT SIDEWALK DRAIN PER STD. # 236
 - (F) CUT & MATCH EXIST. A.C.
 - (G) CONSTRUCT "A" TYPE ISLAND CURB PER STD. # 219

NOTE: CONTRACTOR SHALL VERIFY HORIZONTAL AND VERTICAL LOCATION OF EXISTING UTILITIES AND NOTIFY THE DESIGN ENGINEER IMMEDIATELY OF ANY DISCREPANCIES PRIOR TO CONSTRUCTION.

PROJECT BENCHMARK
PROJECT DATUM: NAVD88
CITY OF LAS VEGAS BENCHMARK 11V90-13NES
NAVD88 ELEVATION: 710.9408 METERS (2332.54 FEET)
ONLY BM 413148, DECATUR BLVD. & GRAND TETON DR. 100' SW OF SECTION CORNER NEXT TO METAL POWER POLE.
NAVD 88 ELEV=710.953 METERS (2332.52 FEET)
1" DIAMETER CONCRETE MONUMENT 77 FEET SOUTH & 54 FEET WEST OF N.E. CORNER SEC. 13T19R60E 10' EAST OF LARGE POWER POLE.

BASIS OF BEARINGS
THE BASIS OF BEARINGS FOR THIS PROJECT IS GRID NORTH AS DEFINED BY THE NEVADA COORDINATE SYSTEM OF 1983 (NCS83), EAST ZONE, (2701), DETERMINED BY CLARK COUNTY GIS CONTROL POINTS 802, 803, 804, AND 805, AS SHOWN ON A RECORD OF SURVEY ON FILE IN THE CLARK COUNTY, NEVADA, RECORDER'S OFFICE, IN BOOK 88 OF SURVEYS, AT PAGE 53.

Avoid cutting underground utility lines. If's costly.
Call before you Dig
1-800-227-2600

Avoid overhead power line contact. It's costly.
Call before you Overhead
1-702-593-6111

KB HOME
STREET PLAN & PROFILE
PONDEROSA COUNTRY STREET
BUCKSKIN MARE AVENUE
IRON MOUNTAIN RANCH
VILLAGE 4
UNIT 1

novada
CONSULTING ENGINEERS & PLANNERS • LAND SURVEYORS
2727 SOUTH RAINBOW BOULEVARD LAS VEGAS, NEVADA 89146-5148
PH. (702) 873-7550 FAX (702) 362-2597
LAS VEGAS, NV 89119
(702) 614-2500

DRAWN BY: FFR / KDS NOV. '01
DESIGNED BY: R.M.S. NOV. '01
CHECKED BY: MFM NOV. '01
PROJECT NO.: 5819-1
SCALE: 1"=40' HORIZ.
1"=4' VERT.

SHEET
S6
16 OF 28 SHEETS
DRAWING NO.
(07Y-4604-4)