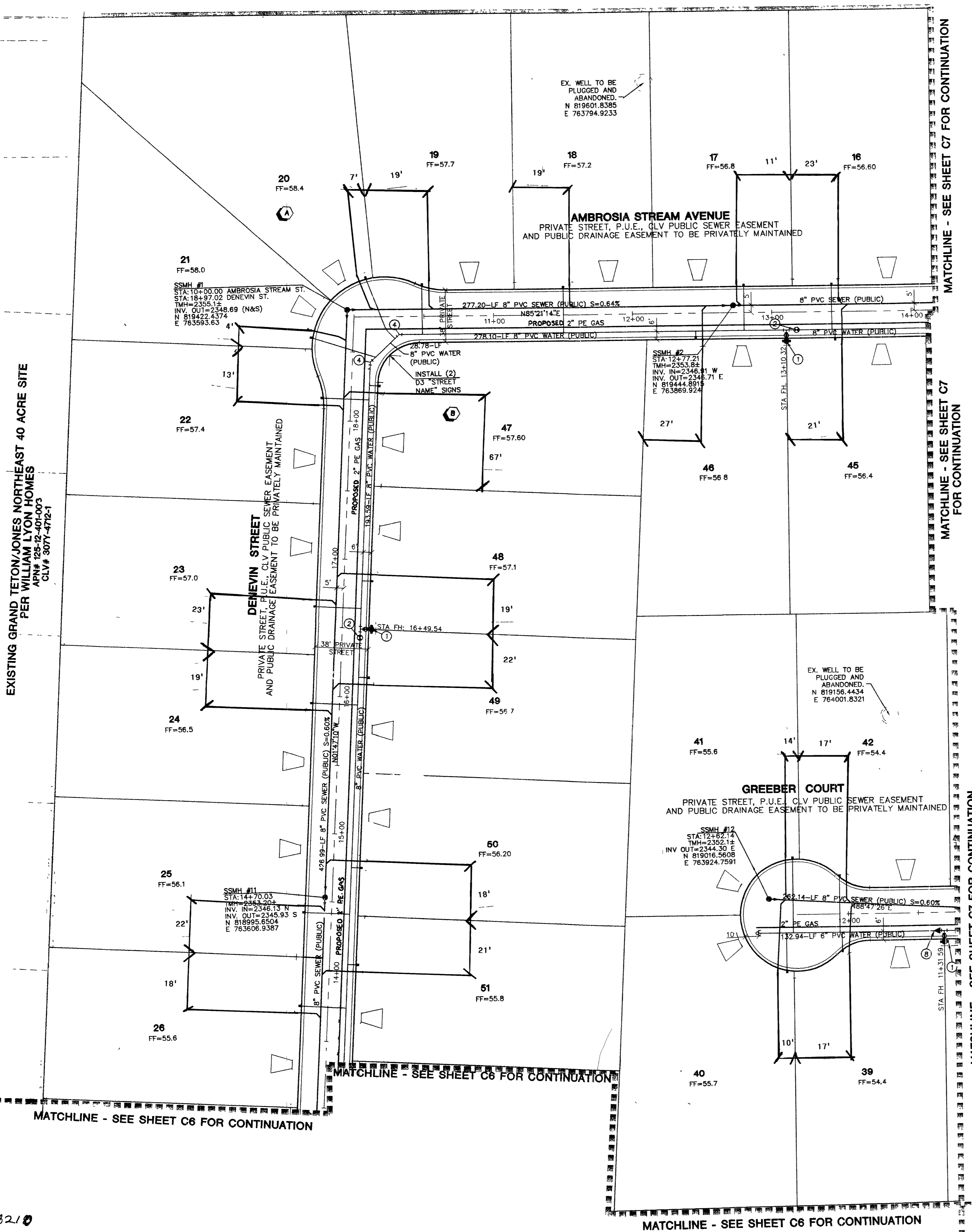


AS BUILT



MATCHLINE - SEE SHEET C7 FOR CONTINUATION

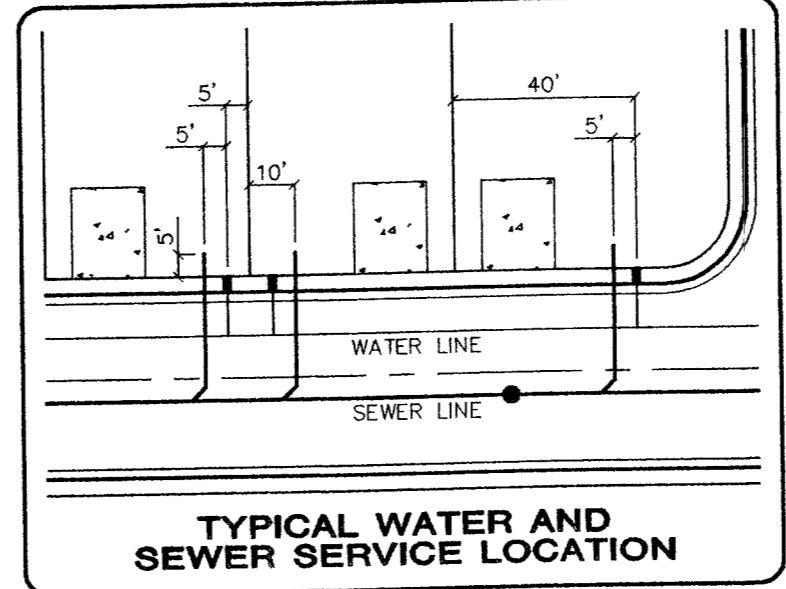
MATCHLINE - SEE SHEET C7 FOR CONTINUATION

MATCHLINE - SEE SHEET C7 FOR CONTINUATION

MATCHLINE - SEE SHEET C6 FOR CONTINUATION

MATCHLINE - SEE SHEET C6 FOR CONTINUATION

MATCHLINE - SEE SHEET C6 FOR CONTINUATION



NOTE:
 INSTALL PIPELINE MARKER BALLS IN TRENCH ABOVE EACH HORIZONTAL ELBOW FITTING, PER MANUFACTURER INSTRUCTIONS.

DISCLAIMER NOTE
 UTILITY LOCATIONS SHOWN HEREON ARE APPROXIMATE ONLY. IT SHALL BE THE CONTRACTOR'S RESPONSIBILITY TO DETERMINE THE EXACT HORIZONTAL AND VERTICAL LOCATION OF ALL EXISTING UNDERGROUND AND OVERHEAD UTILITIES PRIOR TO COMMENCING CONSTRUCTION. NO REPRESENTATION IS MADE THAT ALL EXISTING UTILITIES ARE SHOWN HEREON. THE ENGINEER ASSUMES NO RESPONSIBILITY FOR UTILITIES NOT SHOWN OR UTILITIES NOT SHOWN IN THEIR PROPER LOCATION.

EXISTING WELLS TO BE REMOVED FROM SERVICE (2)
 THE EXISTING WELLS ARE TO BE ABANDONED UPON THE AVAILABILITY OF DISTRICT WATER. THE DISTRICT WATER SERVICE WILL REMAIN IN THE OFF POSITION UNTIL THE WELL HAS BEEN ABANDONED, WHICH MUST BE ACCOMPLISHED WITHIN 30 DAYS OF THE INSTALLATION OF THE DISTRICT SERVICE. AN INSPECTION OF THE ON-SITE SYSTEM WILL BE MADE BY THE LVWD TO VERIFY THE WELL HAS BEEN DISCONNECTED FROM THE ON-SITE SYSTEM AND THE WELL IS NO LONGER FUNCTIONAL. THE OFFICE OF NEVADA STATE ENGINEER (702-486-2770) SHOULD BE CONTACTED FOR INFORMATION CONCERNING REQUIREMENTS AND PROCEDURES FOR ABANDONING WELLS.

FF ELEVATION NOTE
 ALL FF ARE TO HAVE AN ADDITIONAL 0.3' ADDED TO THE EXISTING ELEVATION TO ALLOW FOR A TOTAL OF 1.1' ELEVATION DIFFERENCE BETWEEN THE PAD ELEVATION AND THE FINISH FLOOR ELEVATION.

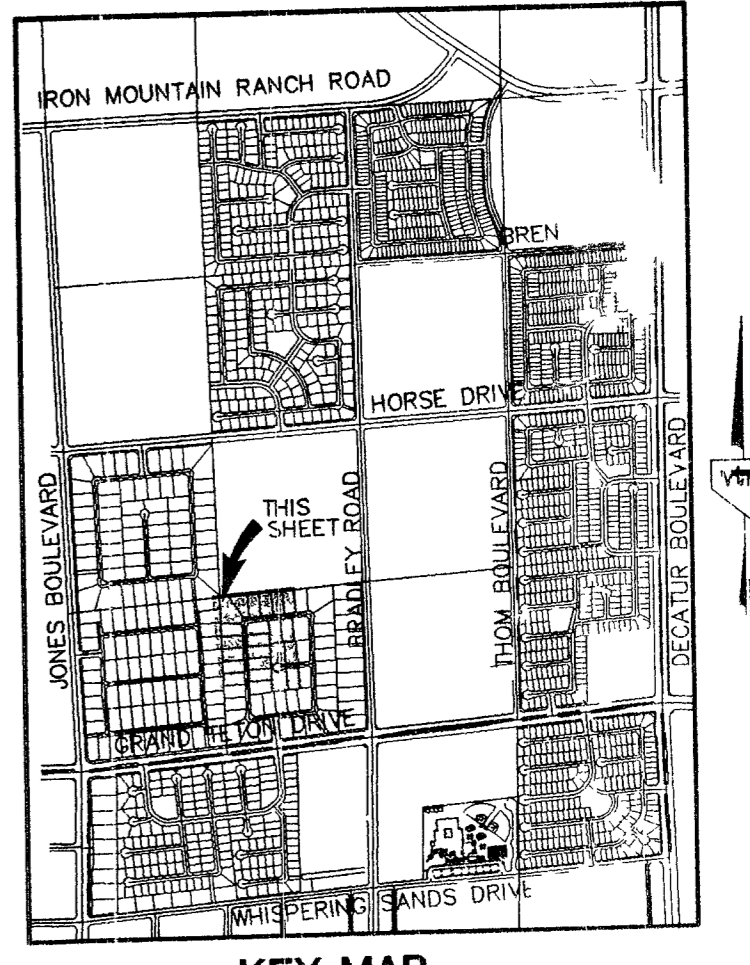
PROJECT BENCHMARK
 PROJECT DATUM: NAVD88
 (OLD) CITY OF LAS VEGAS BENCHMARK 11V90-13NES NAVD88 ELEVATION: 710.9608 METERS (2332.54 FEET) PROJECT DESIGNED USING OLD BENCHMARK
 (NEW) CITY OF LAS VEGAS BENCHMARK 11V90-13NES NAVD88 ELEVATION: 710.9191 METERS (2332.40 FEET) (-0.14 FEET) TO GET NEW PUBLISHED DATUM
 CHLV BM 413148, NAVD 88 ELEV=710.953 METERS (2332.52 FEET) 1" DIAMETER CONCRETE MONUMENT 77 FEET SOUTH & 54 FEET WEST OF N.E. CORNER SEC. 13T18R06E 10' EAST OF LARGE POWER POLE.

BASIS OF BEARINGS
 THE BASIS OF BEARINGS FOR THIS PROJECT IS GRID NORTH AS DEFINED BY THE NEVADA COORDINATE SYSTEM OF 1983 (NCS83), EAST ZONE, (2701), DETERMINED BY CLARK COUNTY GIS CONTROL POINTS 802, 803, 804, AND 805, AS SHOWN ON A RECORD OF SURVEY ON FILE IN THE CLARK COUNTY, NEVADA, RECORDER'S OFFICE, IN BOOK 88 OF SURVEYS, AT PAGE 53.

ALL PRIVATE STREETS ARE P.U.E.s, CLV PUBLIC SEWER EASEMENTS AND PUBLIC DRAINAGE EASEMENTS TO BE PRIVATELY MAINTAINED

PROJECT NAME: *Iron Mountain Ranch Village 3*
 This project complies with the Las Vegas Valley Water District's technical requirements. However, this water project is NOT APPROVED FOR CONSTRUCTION at this time and this signature does not provide or imply a water commitment.
 DATE: 6/2/03
 LVWD ESN 052

Call before you Overhead 1-702-593-6111
 Call before you Dig 1-800-227-2600



LEGEND

WATER	FIRE HYDRANT ASSEMBLY (PER UDACS PLATE NO 7)	11 EA
①	8" GATE VALVE	5 EA
②	1/2" 45° ELBOW	3 EA
③	1/2" 12" GATE VALVE	3 EA
④	1/2" 11 7/8" ELBOW	2 EA
⑤	1/2" 11 7/8" ASSEMBLY (PER UDACS PLATE No. 4)	2 EA
⑥	1/2" 6" REDUCER	1 EA
⑦	1/2" 8" x 12" TEE	0 EA
⑧	1/2" 12" x 10" REDUCER	1 EA
⑨	1/2" 12" x 8" TAPPING TEE W/ 8" TAPPING VALVE	2 EA
⑩	1" SERVICE W/ 1" METER (PER UDACS PLATE 1D)	62 EA
⑪	1" METER W/ 1" RPPA (PER UDACS PLATE 1D & 11A)	2 EA
⑫	12" WATER MAIN	1,323 LF
⑬	8" WATER MAIN	3,543 LF
⑭	6" WATER MAIN	133 LF
⑮	SEWER	
⑯	STANDARD MANHOLE (PUBLIC)	12 EA
⑰	4" SEWER LATERALS (PRIVATE)	1,294 LF
⑱	4" SEWER WYES (PRIVATE)	62 EA
⑲	BACKWATER VALVES (PRIVATE)	0 EA
⑳	8" SEWER MAIN (PUBLIC)	3425 LF

SEWER CONTRIBUTION (BASED ON 62 LOTS)
 AVERAGE DAILY FLOW = 0.0155 MGD
 PEAK FLOW (PF=3.5) = 0.05425 MGD

STREET LIGHT & SIGNAGE

①	100 WATT H.P.S. (PUBLIC) SUMMERLIN TYPE 2C POLES WITH 8.0' ARMS	8 EA
②	400 WATT H.P.S. (PUBLIC)	1 EA
③	100 WATT DOUBLE MAST (PUBLIC)	1 EA
④	250 WATT ST. SUMMERLIN TYPE 2A W/ 8' ARMS (LAMPING ONLY)	0 EA
⑤	1 1/4" ST. LT. CONDUIT	0 EA
⑥	3 1/2" PULLBOX (PUBLIC)	0 EA
⑦	R1-1 "STOP" SIGN & (2) D3 "STREET NAME" SIGNS	3 EA
⑧	(2) D3 "STREET NAME" SIGNS	5 EA
⑨	DRIVEWAY LOCATION (SCHEMATIC)	62
⑩	POINT OF CONNECTION	5 ea
⑪	BLOCK DESIGNATION	

LAS VEGAS FIRE DEPARTMENT
 FIRE FLOW REQUIREMENT IS 1,500 GALLONS/MIN. AT 20 LBS./SQ.IN. RESIDUAL.
 BASED ON:
 SQUARE FOOTAGE: 2600
 LARGEST AREA BETWEEN SEPERATION WALLS:
 HEIGHT: 2 STORY
 TYPE OF CONSTRUCTION:
 EXPOSURES: 10' MIN.
 SPRINKLER SYSTEM: NONE
 OCCUPANCY: SINGLE FAMILY RESIDENCE
 ROOF CONSTRUCTION: CONCRETE TILE

REVIEWED BY: [Signature]
 DATE: 9/3/05
 LAS VEGAS VALLEY WATER DISTRICT PROJECT # 27130/469693
 CITY OF LAS VEGAS FIRE MARSHAL

APPROVAL:
 [Signatures and stamps]
 PROFESSIONAL ENGINEER STATE OF NEVADA
 KENNETH R. NICHOLSON
 CIVIL
 No. 10639
 EXPIRES 12-31-03

AS BUILT

CITY OF LAS VEGAS

KB HOME
 150 BRIGHT ROAD, SUITE F
 LAS VEGAS, NV 89119
 (702) 614-2500

IRON MOUNTAIN RANCH VILLAGE 3

MASTER UTILITY & STREET LIGHT PLAN

DRAWN BY: [Signature] JAN 03
 DESIGNED BY: [Signature] JAN 03
 CHECKED BY: [Signature] JAN 03
 PROJECT NO: 6095-1
 SCALE: 1"=40' HORIZ. 1"=10' VERT.

APPROVAL:
 PROFESSIONAL ENGINEER STATE OF NEVADA
 KENNETH R. NICHOLSON
 CIVIL
 No. 10639
 EXPIRES 12-31-03

SHEET
 5 OF 34 SHEETS
 DRAWING NO. 1074604-3