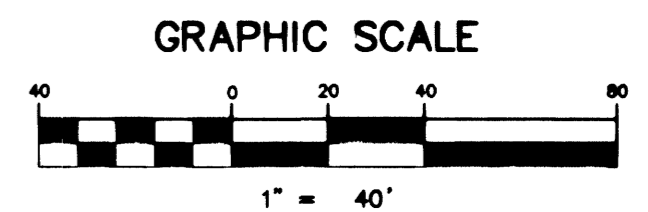


PROFILE SCALE:
HORIZ. 1" = 40'
VERT. 1" = 4'



SIDEWALK RAMP TABLE
PER STD. DWG 235 CASE II

NO.	DIM "A"	DIM "B"	CASE
1	8'	8'	I

CURVE TABLE

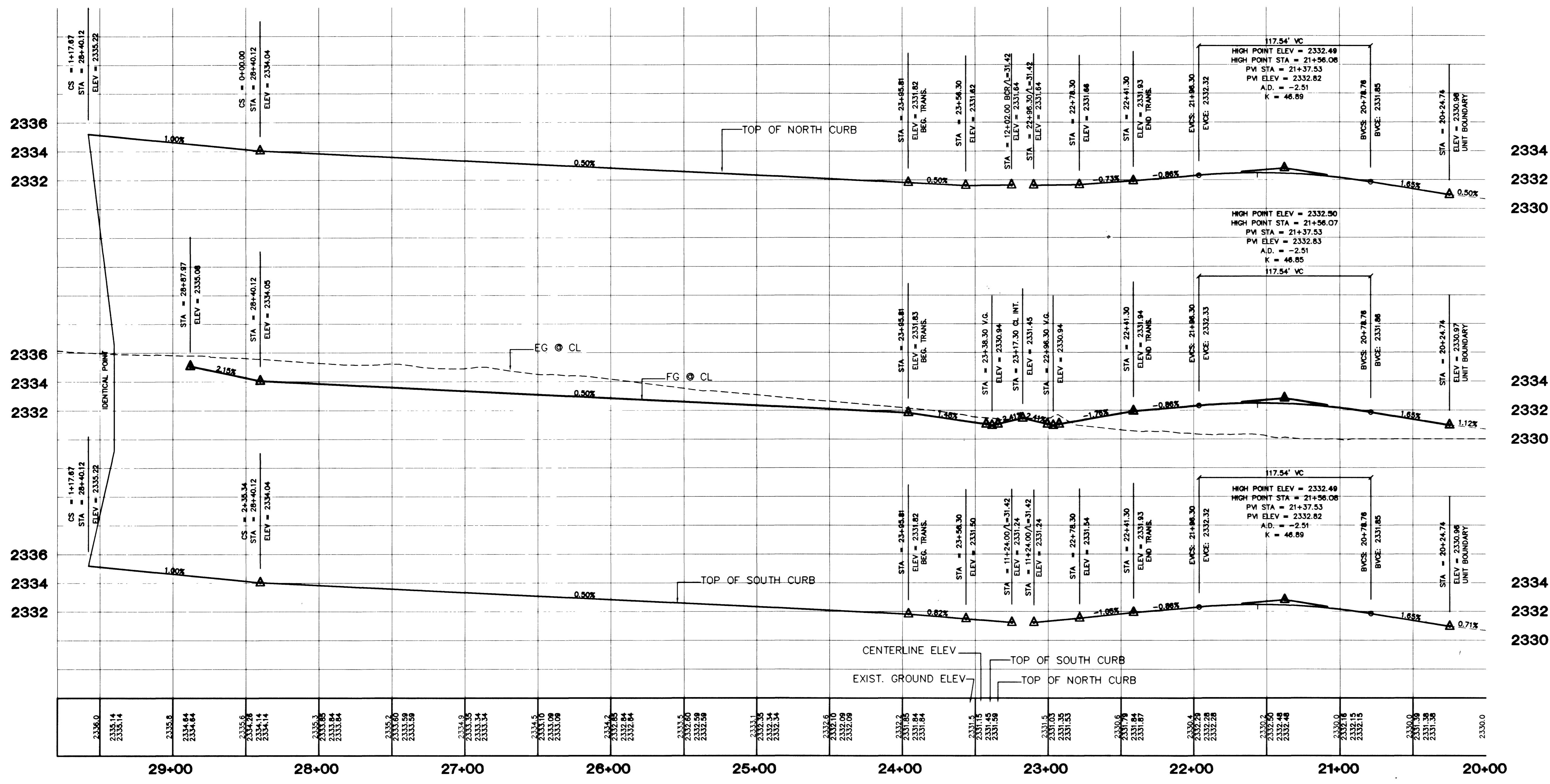
NO.	RADIUS	DELTA	LENGTH	TANGENT
C1	149.00'	41°27'52"	107.83'	56.40'
C2	123.00'	43°22'25"	93.11'	48.91'
C3	100.00'	43°37'59"	75.70'	39.77'
C4	100.00'	44°53'14"	78.34'	41.31'
C5	129.00'	45°27'24"	102.34'	54.04'
C6	128.00'	45°55'50"	43.72'	22.07'
C7	40.00'	46°21'53"	32.37'	17.13'
C8	45.50'	272°43'50"	216.58'	---
C9	34.00'	44°39'01"	26.50'	13.96'
C10	40.50'	263°18'02"	190.36'	---
C11	23.50'	46°23'22"	19.85'	10.56'
C12	40.50'	276°46'45"	195.64'	---
C13	130.00'	41°27'52"	94.08'	48.21'
C14	168.00'	41°27'52"	121.58'	63.59'
C15	142.00'	43°22'25"	107.50'	56.47'
C16	104.00'	43°22'25"	78.73'	41.36'
C17	81.00'	43°22'25"	61.32'	32.11'
C18	119.00'	43°22'25"	90.08'	47.32'
C19	20.00'	93°55'47"	32.67'	21.30'
C20	20.00'	86°24'13"	30.18'	18.78'
C21	81.00'	44°53'14"	63.46'	33.46'
C22	119.00'	44°53'14"	93.23'	49.15'
C23	20.00'	83°10'07"	20.03'	17.75'
C24	20.00'	90°00'00"	31.42'	20.00'
C25	148.00'	45°27'24"	117.42'	62.00'
C26	110.00'	45°27'24"	87.27'	46.08'

BASIS OF BEARINGS
THE BASIS OF BEARINGS FOR THIS PROJECT IS GRID NORTH AS DEFINED BY THE NEVADA COORDINATE SYSTEM OF 1983 (NCS83), EAST ZONE, (2701) DETERMINED BY CLARK COUNTY GIS CONTROL POINTS 802, 804, AND 805, AS SHOWN ON A RECORD OF SURVEY ON FILE IN THE CLARK COUNTY, NEVADA, RECORDER'S OFFICE, IN BOOK 88 OF SURVEYS, AT PAGE 53.

PROJECT BENCHMARK
PROJECT DATUM: NAVD88
CITY OF LAS VEGAS BENCHMARK 1LV90-13NES
NAVD88 ELEVATION: 710.9608 METERS (2332.54 FEET)
ONLY BM 413148, NAVD 88 ELEV=710.953 METERS (2332.52 FEET) 1" DIAMETER CONCRETE MONUMENT 77 FEET SOUTH & 54 FEET WEST OF N.E. CORNER SEC. 13T19R60E 10' EAST OF LARGE POWER POLE.

- CONSTRUCTION NOTES**
- (A) CONSTRUCT "L" CURB & GUTTER PER STD. # 216
 - (B) CONSTRUCT SIDEWALK PER STD. # 234
 - (C) CONSTRUCT CROSS GUTTER PER STD. # 228
 - (D) CONSTRUCT SIDEWALK RAMP PER STD. # 235
 - (E) CONSTRUCT SIDEWALK DRAIN PER STD. # 236
 - (F) CUT & MATCH EXIST. A.C.
 - (G) CONSTRUCT "A" TYPE ISLAND CURB PER STD. # 219

NOTE: CONTRACTOR SHALL VERIFY HORIZONTAL AND VERTICAL LOCATION OF EXISTING UTILITIES AND NOTIFY THE DESIGN ENGINEER IMMEDIATELY OF ANY DISCREPANCIES PRIOR TO CONSTRUCTION.



Avoid cutting underground utility lines. It's costly.
 Avoid overhead power lines. Call before you dig.
 Call before you dig
 1-800-227-2600

Avoid overhead power lines. Call before you dig.
 Call before you dig
 OVERHEAD
 1-702-593-6111

7	6	5	4	3	2	1
DATE	BY	REV	DATE	BY	REV	DATE

KB HOME
 750 PILOT ROAD, SUITE F
 LAS VEGAS, NEVADA, 89119
 (702) 614-2500

IRON MOUNTAIN RANCH VILLAGE 2 - UNIT 2
 STREET PLAN & PROFILE
 NAFF RIDGE DRIVE
 STA/20+24.74-STA/28+40.12

DRAWN BY: KDS/PPR
 DESIGNED BY: KDS/PPR
 CHECKED BY:

APR. '01
 APR. '01

SCALE: 40' HORIZ.
 NA VERT.

SHEET
ST1
 19 OF 23 SHEETS
 DRAWING NO.
 107Y-4604-Z-2

2727 SOUTH RAINBOW BOULEVARD LAS VEGAS, NEVADA 89102-5148
 PH. (702) 873-7550 FAX (702) 362-2597
vtm nevada
 CONSULTING ENGINEERS & PLANNERS • LAND SURVEYORS