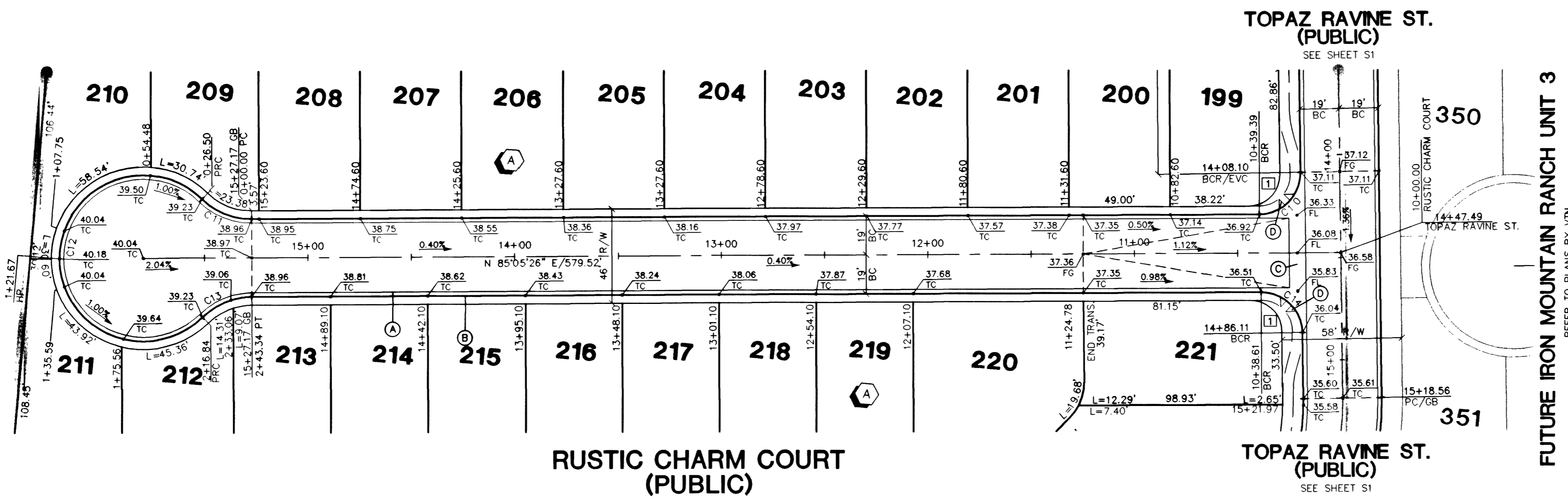
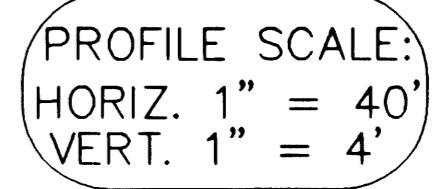
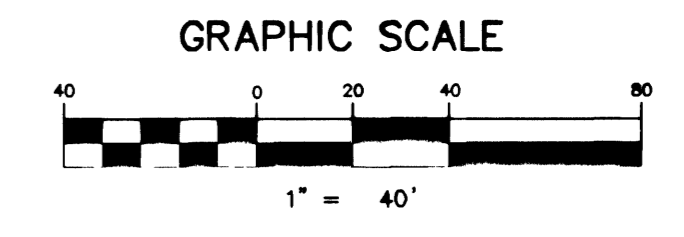
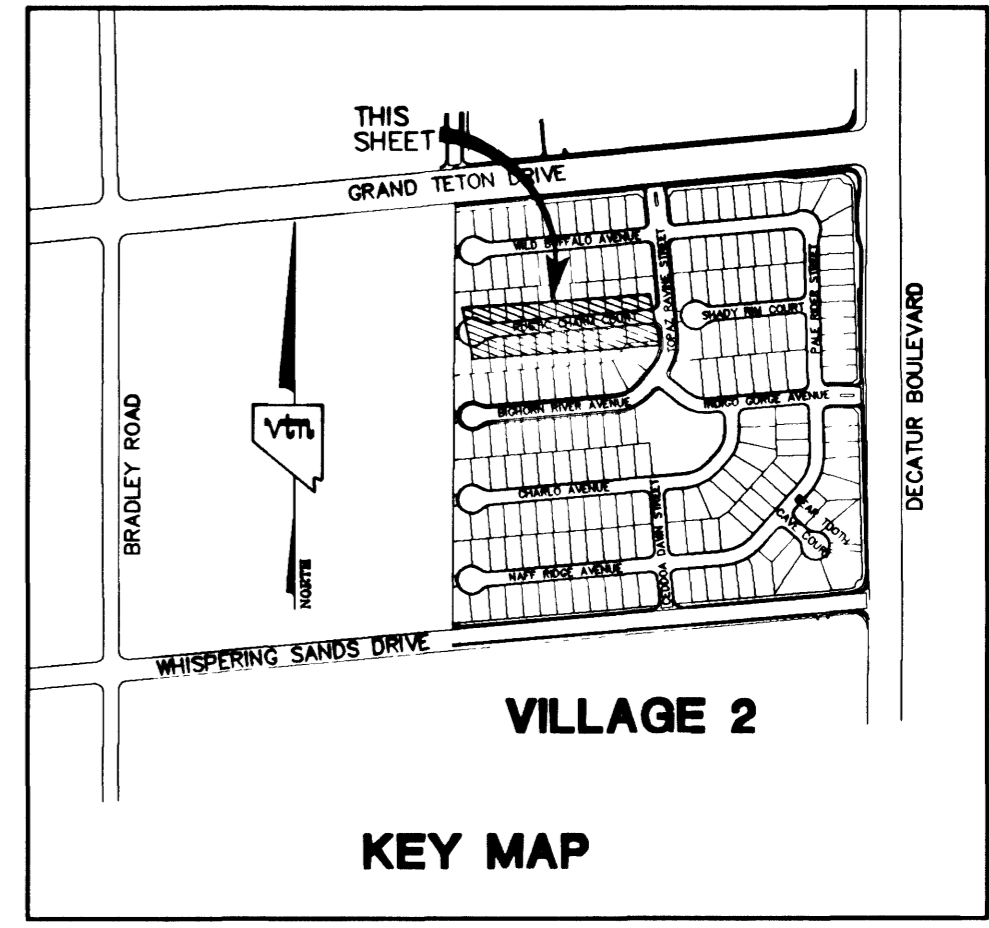


FUTURE PARK SITE
REFER TO PLANS BY VTN



FUTURE IRON MOUNTAIN RANCH UNIT 3
REFER TO PLANS BY VTN



SIDEWALK RAMP TABLE
PER STD. DWG 235 CASE II

NO.	DIM "A"	DIM "B"	CASE
I	8.0'	8.0'	II

CURVE TABLE

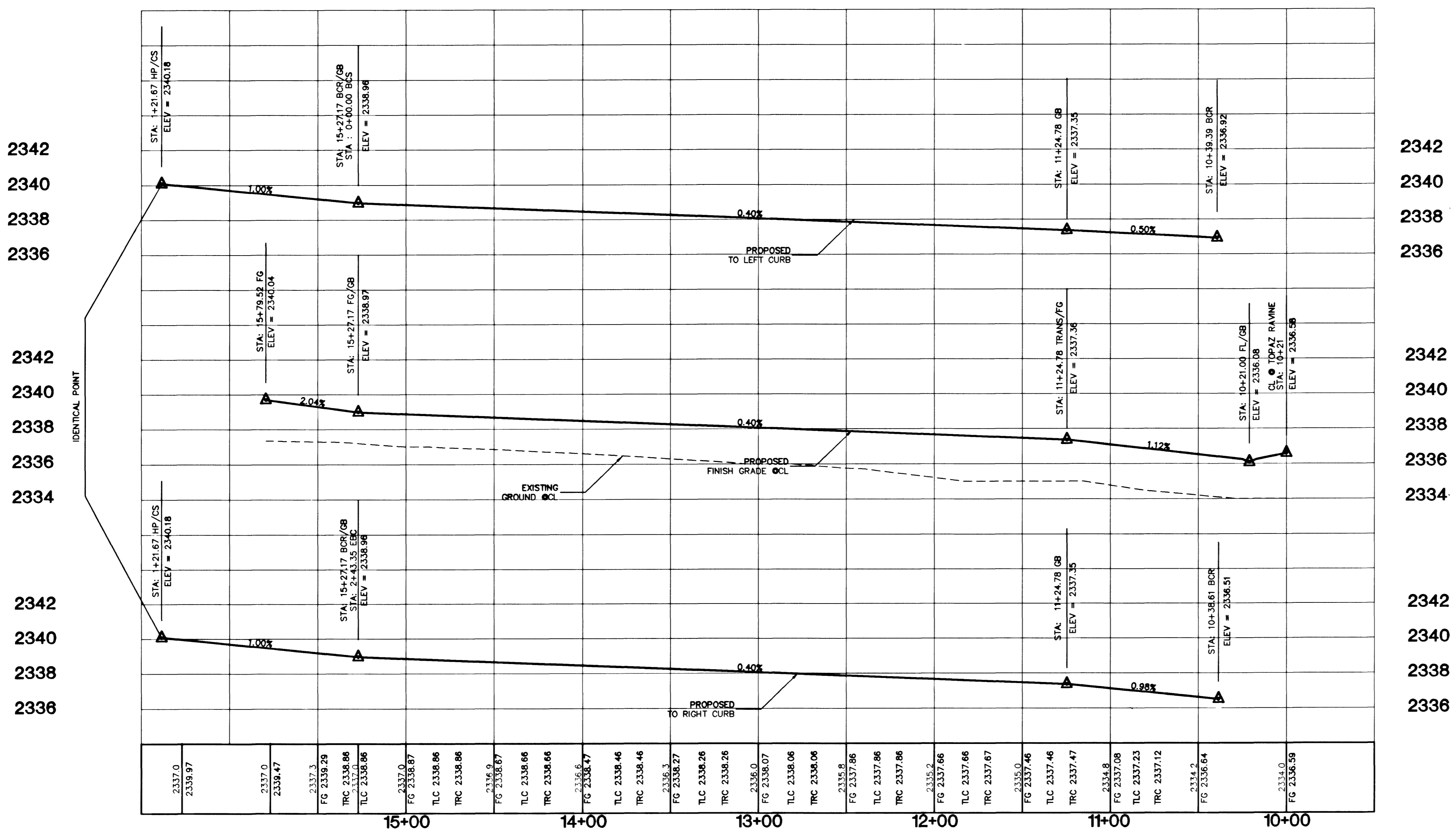
CURVE	LENGTH	RADIUS	DELTA	TARGET
C1	12.57	4.00	180°00'00"	--
C2	12.57	4.00	180°00'00"	--
C3	12.57	4.00	180°00'00"	--
C4	12.57	4.00	180°00'00"	--
C5	31.49	20.00	90°13'33"	20.08
C6	26.50	34.00	44°39'01"	13.96
C7	190.36	40.50	269°18'02"	41.00
C8	26.50	34.00	44°39'01"	13.96
C9	31.34	20.00	89°46'27"	19.92
C10	31.61	20.00	90°34'10"	20.20
C11	26.50	34.00	44°39'01"	13.96
C12	190.36	40.50	269°18'02"	41.00
C13	26.50	34.00	44°39'01"	13.96
C14	31.22	20.00	89°25'50"	19.80
C15	86.61	110.00	45°06'46"	45.69

PROJECT BENCHMARK
PROJECT DATUM: NAVD88
CITY OF LAS VEGAS BENCHMARK 1LV90-13NES
NAVD88 ELEVATION: 710.9608 METERS (2332.54 FEET)
ONLY BM 413148, NAVD 88 ELEV=710.953 METERS (2332.52 FEET) 1" DIAMETER CONCRETE MONUMENT
77 FEET SOUTH & 54 FEET WEST OF N.E. CORNER
SEC. 13T19R60E 10' EAST OF LARGE POWER POLE.

BASIS OF BEARINGS
THE BASIS OF BEARINGS FOR THIS PROJECT IS GRID NORTH AS DEFINED BY THE NEVADA COORDINATE SYSTEM OF 1983 (NCS83), EAST ZONE, (2701), DETERMINED BY CLARK COUNTY GIS CONTROL POINTS 802, 803, 804, AND 805, AS SHOWN ON A RECORD OF SURVEY ON FILE IN THE CLARK COUNTY, NEVADA, RECORDER'S OFFICE, IN BOOK 88 OF SURVEYS, AT PAGE 53.

- CONSTRUCTION NOTES:
- (A) CONSTRUCT "L" CURB & GUTTER PER STD. # 216
 - (B) CONSTRUCT SIDEWALK PER STD. # 234
 - (C) CONSTRUCT CROSS GUTTER PER STD. # 228
 - (D) CONSTRUCT SIDEWALK RAMP PER STD. # 235
 - (E) CONSTRUCT SIDEWALK DRAIN PER STD. # 236
 - (F) CUT & MATCH EXIST. A.C.
 - (G) CONSTRUCT "A" TYPE ISLAND CURB PER STD. # 219

NOTE: CONTRACTOR SHALL VERIFY HORIZONTAL AND VERTICAL LOCATION OF EXISTING UTILITIES AND NOTIFY THE DESIGN ENGINEER IMMEDIATELY OF ANY DISCREPANCIES PRIOR TO CONSTRUCTION.



Avoid cutting underground utility lines. Dig carefully.
Call before you Dig
1-800-227-2600

Avoid overhead power line contact.
Call before you OVERHEAD
1-702-593-6111

KB HOME
750 PILOT ROAD, SUITE F
LAS VEGAS, NV 89119
(702) 514-2500

STREET PLAN & PROFILE
RUSTIC CHARM COURT
STA: 10+00 TO 15+79.52

IRON MOUNTAIN RANCH
VILLAGE 2 - UNIT 1

DRAWN BY: MARCH '01
DESIGNED BY: MARCH '01
CHECKED BY:
PROJECT NO: 5917
SCALE: 1" = 40' HORIZ.
VERT.

SEAL
PROFESSIONAL ENGINEER
KENNETH POLSON
CIVIL
NO. 10539

SHEET
83
10 OF 20 SHEETS
DRAWING NO.
1074-4604-2-1

2727 SOUTH RAINBOW BOULEVARD LAS VEGAS, NEVADA 89102-5148
PH. (702) 873-7550 FAX (702) 362-2597
VTN nevada CONSULTING ENGINEERS • PLANNERS • LAND SURVEYORS