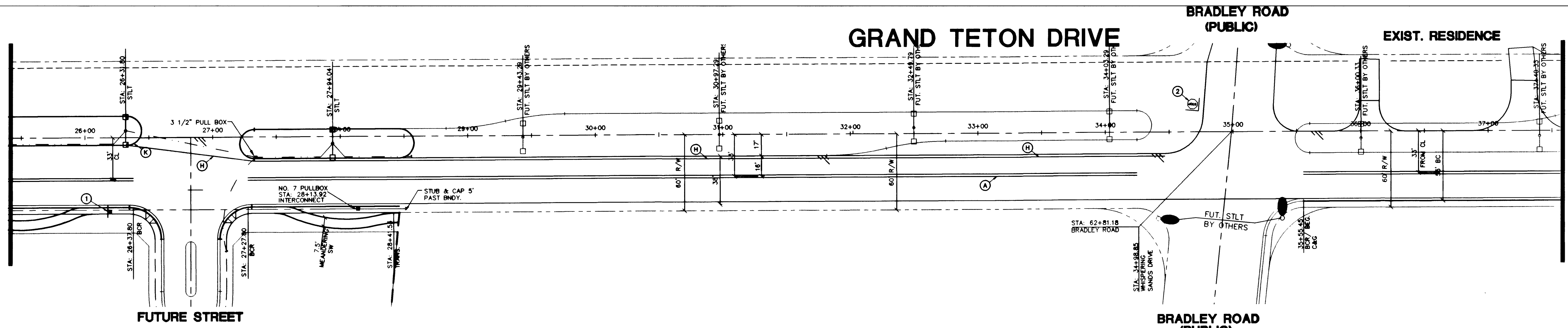
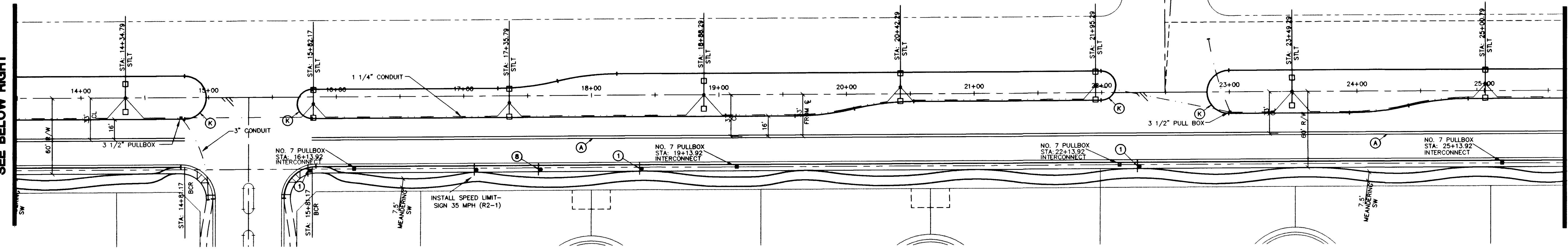


MATCHLINE STA 26+50
SEE BELOW RIGHT



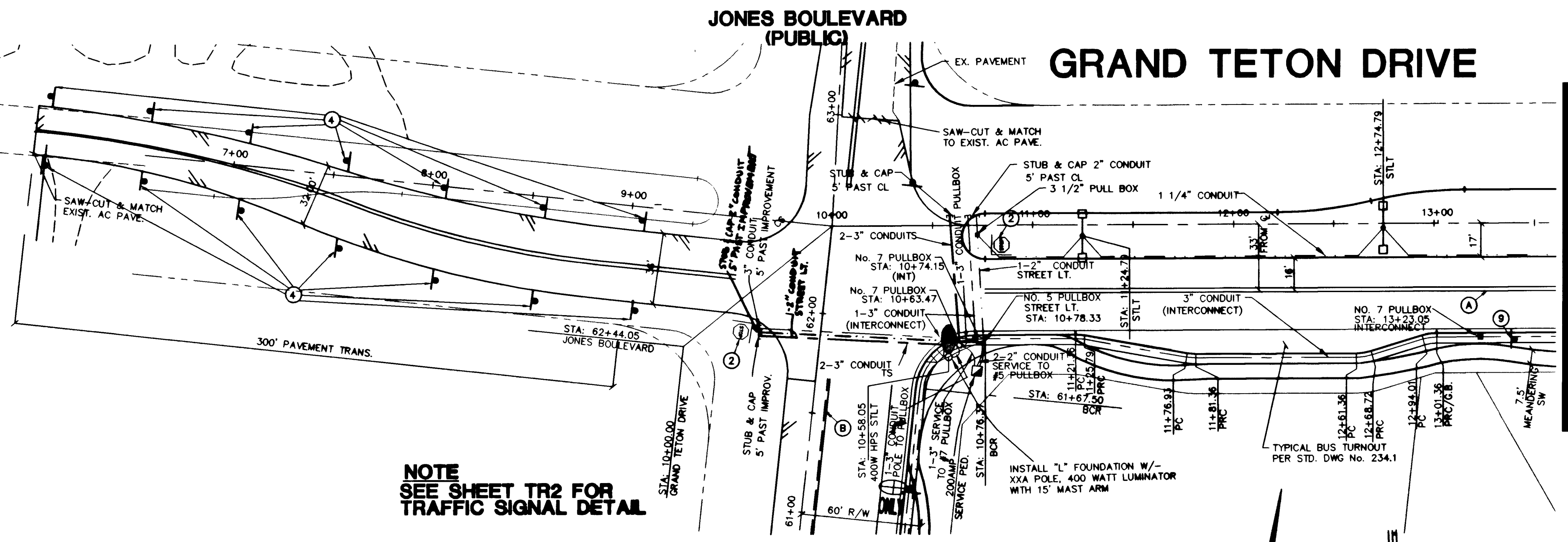
MATCHLINE STA 37+60
SEE SHEET TR2

MATCHLINE STA 13+60
SEE BELOW RIGHT



MATCHLINE STA 26+60
SEE ABOVE LEFT

GRAND TETON DRIVE
(PUBLIC)



NOTE
SEE SHEET TR2 FOR
TRAFFIC SIGNAL DETAIL

JONES BOULEVARD
SEE SHEET TR4

200 AMP 240V PAD MOUNT SERVICE
WITH

- 2 2 POLE 60 AMP CIRCUIT BREAKER/S
- 1 1 POLE 15 AMP CIRCUIT BREAKER/S
- 1 1 POLE 40 AMP CIRCUIT BREAKER/S
- 1 1 POLE 60 AMP CIRCUIT BREAKER/S
- 2 POLE 60 AMP CONTACTOR/S
- 1 BY-PASS SWITCH PER CONTACTOR

- STRIPING & SIGNAGE**
- (A) INSTALL YELLOW TYPE 1 CENTERLINE DELINEATION PER USD #244
 - (B) INSTALL YELLOW TYPE 2 CENTERLINE DELINEATION PER USD #244
 - (C) INSTALL WHITE TYPE 4 CENTERLINE DELINEATION PER USD #244A
 - (D) INSTALL WHITE TURN LANE STORAGE LINE PER USD #246A
 - (E) INSTALL 2' WIDE STOP BAR USING WHITE COLD POLYMER FILM PER USD #254.1
 - (F) INSTALL 10' WIDE CROSS WALK USING WHITE COLD POLYMER FILM PER USD #254.1
 - (G) INSTALL "ARROWS" AND "ONLY" USING WHITE COLD POLYMER FILM PER DETAIL SHEET TR2
 - (H) INSTALL 4" WIDE WHITE PAINTED EDGE LINE
 - (I) INSTALL 8" WIDE WHITE PAINTED EDGELINE
 - (J) INSTALL 24" WIDE YELLOW DIAGONALS/WHITE CHEVRONS AT 25' OC PER USD #245
 - (K) INSTALL MEDIAN NOSE MARKERS PER USD #245
 - (1) INSTALL R8-3A "NO PARKING" SIGNS WITH ARROWS
 - (2) INSTALL R1-1 "STOP" SIGN & (2) 9' D3 "STREET NAME" SIGNS
 - (3) INSTALL R3-7R "RIGHT LANE MUST TURN RIGHT" SIGN
 - (4) INSTALL W1-8 "CHEVRON" SIGN
 - (5) INSTALL R11-2 ON TYPE III BARRICADES
 - (6) INSTALL 0' LIP DRIVEWAY OR SIDEWALK RAMP
 - (7) INSTALL W20-3 (ROAD CLOSED 500')
 - (8) INSTALL R2-1" SPEED LIMIT 35 MPH"

LEGEND & QUANTITY ESTIMATE

25W STREET LIGHT SUMMERLIN TYPE 2A DBL ARM W/ 10' ARM (IF AVAILABLE)	19 EA.
100W STREET LIGHT POLE TYPE SUMMERLIN STYLE	0 EA.
25W STREET LIGHT SUMMERLIN TYPE 2A W/ 8' ARM	8 EA.
400W STREET LIGHT	2 EA.
"STOP" SIGNS & (2) "STREET NAME" SIGNS	7 EA.
"STREET NAME" SIGN	0 EA.
3-1/2" PULL BOX	8 EA.
NO. 5 PULL BOX	4 EA.
NO. 7 PULL BOX	16 EA.
3" CONDUIT (INTERCONNECT)	3,685 L.F.
2-3" CONDUIT (TRAFFIC)	312 L.F.
1 1/4" CONDUIT (STREETLIGHT)	6515 L.F.
UNLESS NOTED	
PADMOUNT SERVICE POINT	2 EA.
PHOTO EYE	2 EA.
IN SERVICE PEDESTAL	

BASIS OF BEARINGS
THE BASIS OF BEARINGS FOR THIS PROJECT IS GRID NORTH AS DEFINED BY THE NEVADA COORDINATE SYSTEM OF 1983 (NCS83), EAST ZONE, (2701), DETERMINED BY CLARK COUNTY GIS CONTROL POINTS 802, 803, 804, AND 805, AS SHOWN ON A RECORD OF SURVEY ON FILE N IN THE CLARK COUNTY, NEVADA, RECORDER'S OFFICE, IN BOOK 88 OF SURVEYS, AT PAGE 53.

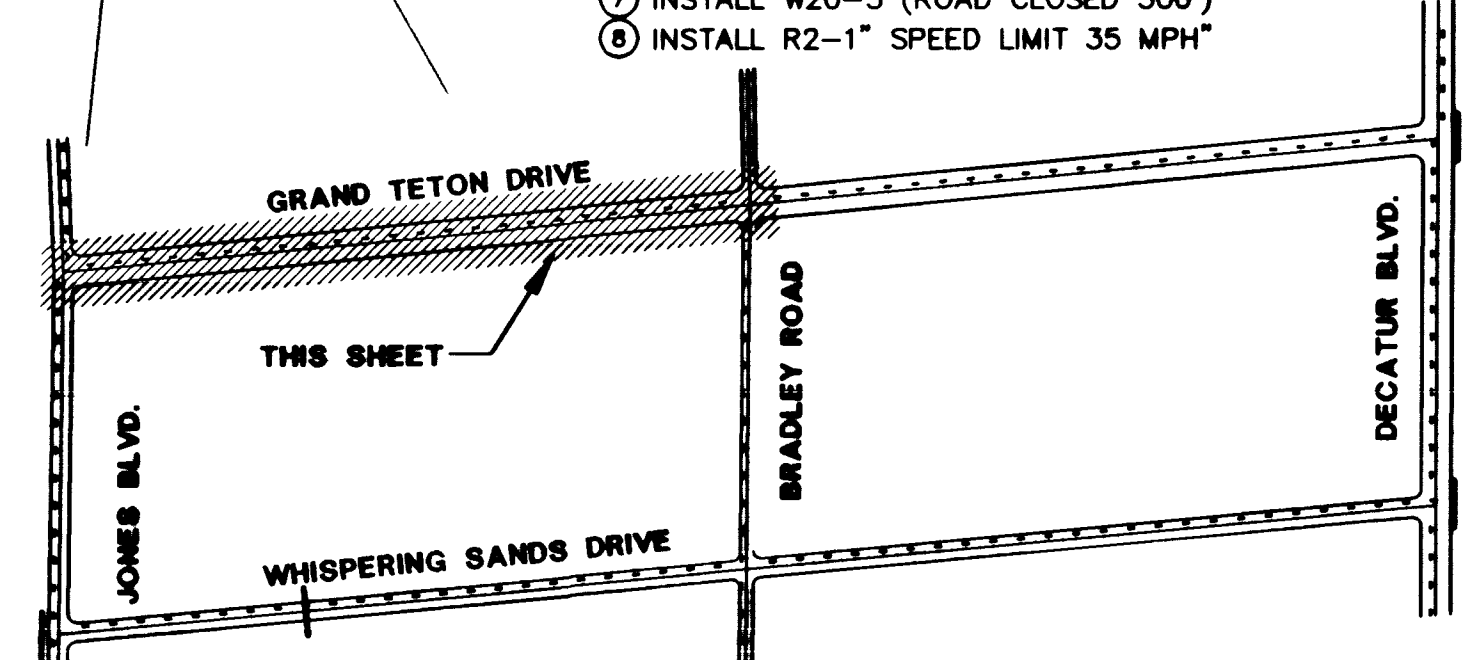
PROJECT BENCHMARK
PROJECT DATUM: NAVD88
CITY OF LAS VEGAS BENCHMARK 1LV90-13NES
NAVD88 ELEVATION: 710.9608 METERS (2332.54 FEET)
ONLY BM 413148, DECATUR BLVD. & GRAND TETON DR. 100' SW OF SECTION CORNER NEXT TO METAL POWER POLE.
NAVD 88 ELEV=710.953 METERS (2332.52 FEET)
1" DIAMETER CONCRETE MONUMENT 77 FEET SOUTH & 54 FEET WEST OF N.E. CORNER SEC. 13T19R80E 10' EAST OF LARGE POWER POLE.

Call before you Dig
1-800-227-2800

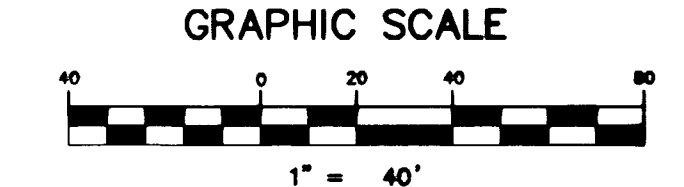
Call before you Overhead
1-702-593-6111

NOTE: CONTRACTOR SHALL VERIFY HORIZONTAL AND VERTICAL LOCATION OF EXISTING UTILITIES AND NOTIFY THE DESIGN ENGINEER IMMEDIATELY OF ANY DISCREPANCIES PRIOR TO CONSTRUCTION.

MATCHLINE STA 13+60
SEE BELOW LEFT

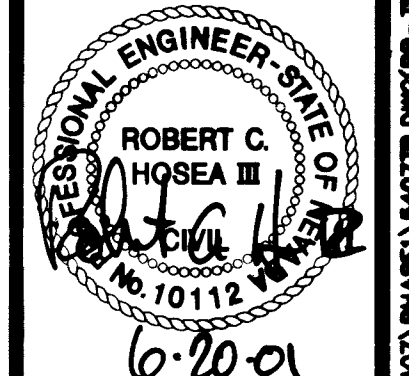


KEY MAP



STREET LIGHTING STRIPING & SIGNAGE PLAN
GRAND TETON DRIVE

DRAWN BY: MAR. 01
DESIGNED BY: MAR. 01
CHECKED BY:
PROJECT NO: 5825
SCALE: 1" = 40' HORIZ. VERT. NA



SHEET
TR3
27 OF 48 SHEETS
DRAWING NO.
2017-4604-1

KB HOME
740 PINEY ROAD, SUITE F
LAS VEGAS, NV 89118
(702) 614-2500

vtm nevada
2727 SOUTH RAINBOW BOULEVARD LAS VEGAS, NEVADA 89146-5148
PH: (702) 873-7550 FAX: (702) 365-2597
PLANNERS • LAND SURVEYORS

REV	DATE	BY	REVISION
7			
6			
5			
4			
3			
2			
1			