

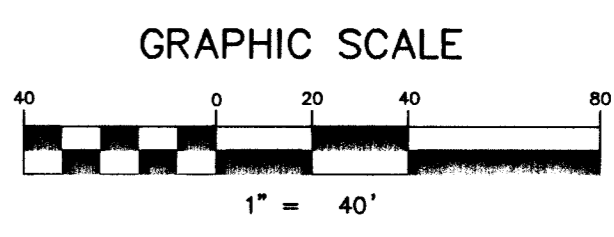
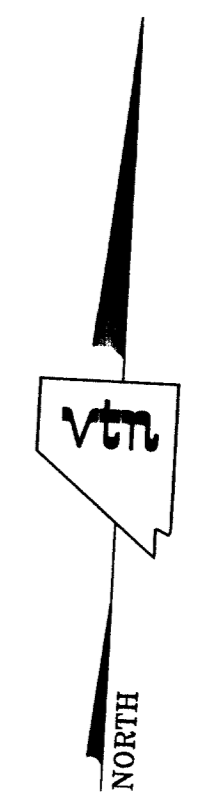
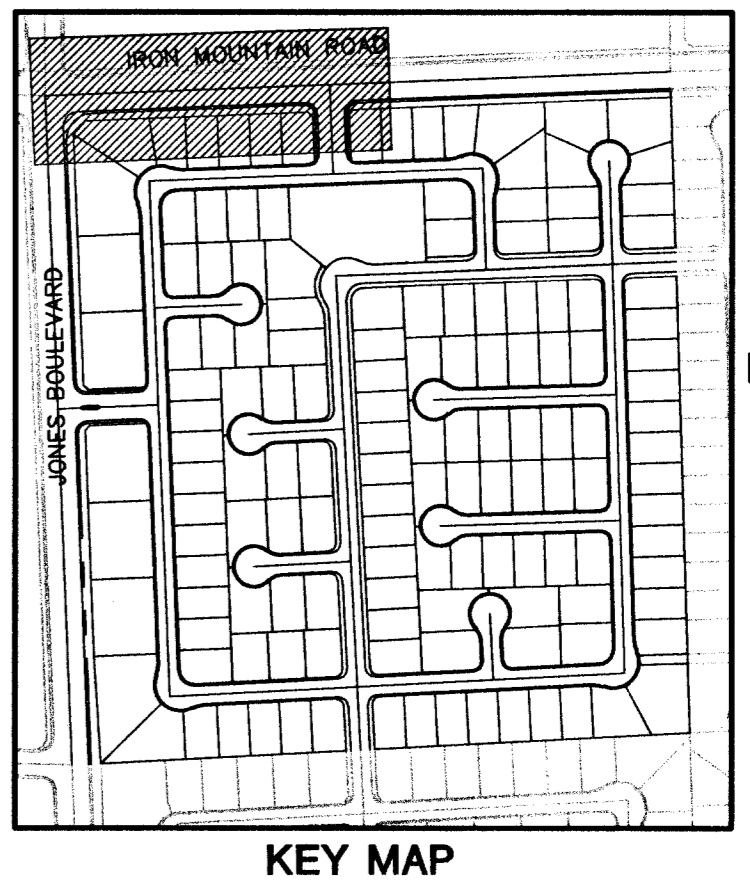
REFER TO IRON MOUNTAIN RANCH VILLAGE 11 UNIT 1 IMPROVEMENT PLANS PER VTN NV

PROFILE SCALES:
 HORZ. = 1"=40'
 VERT. = 1"=4'

SIDEWALK RAMPS TABLE
 PER STD. DWG 235 CASE I

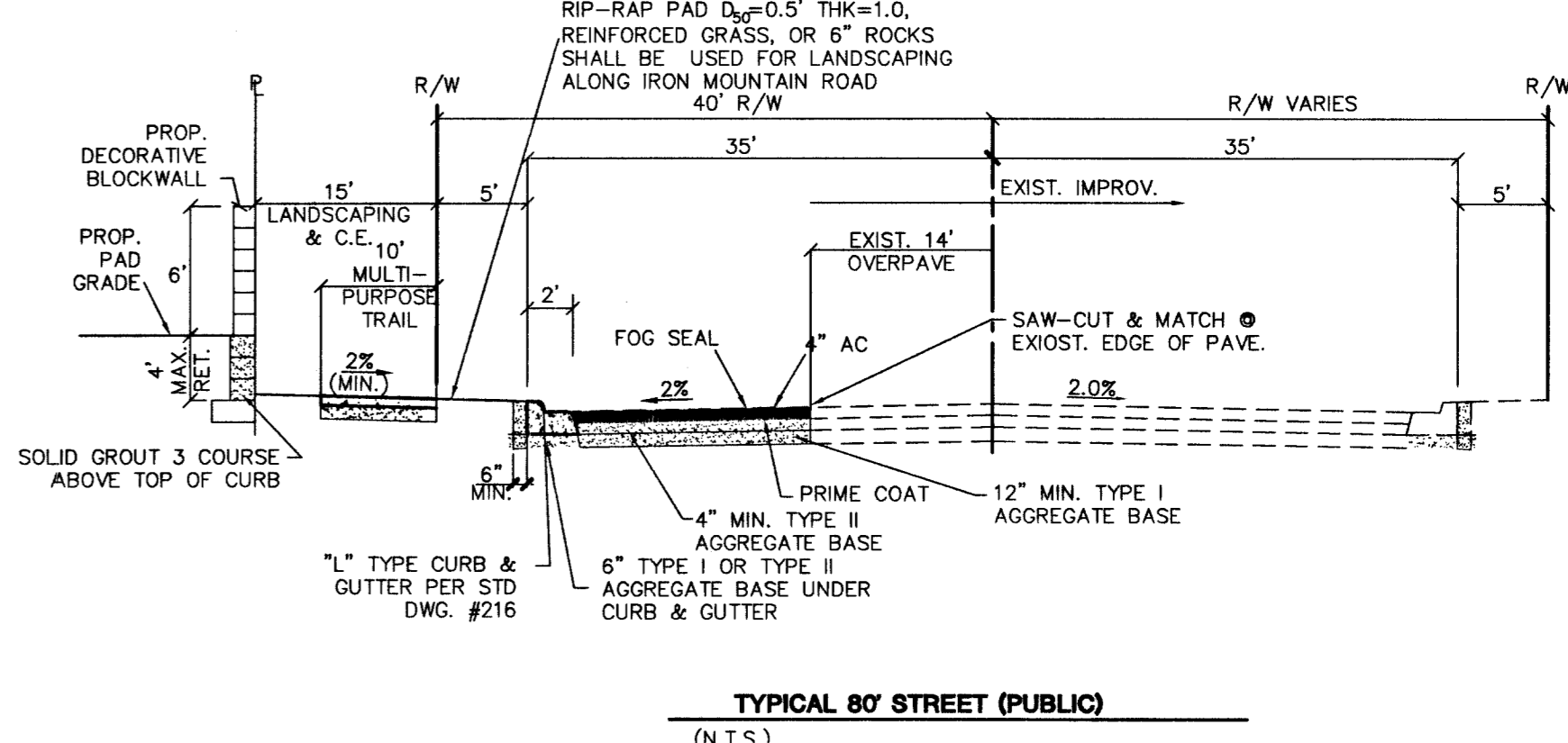
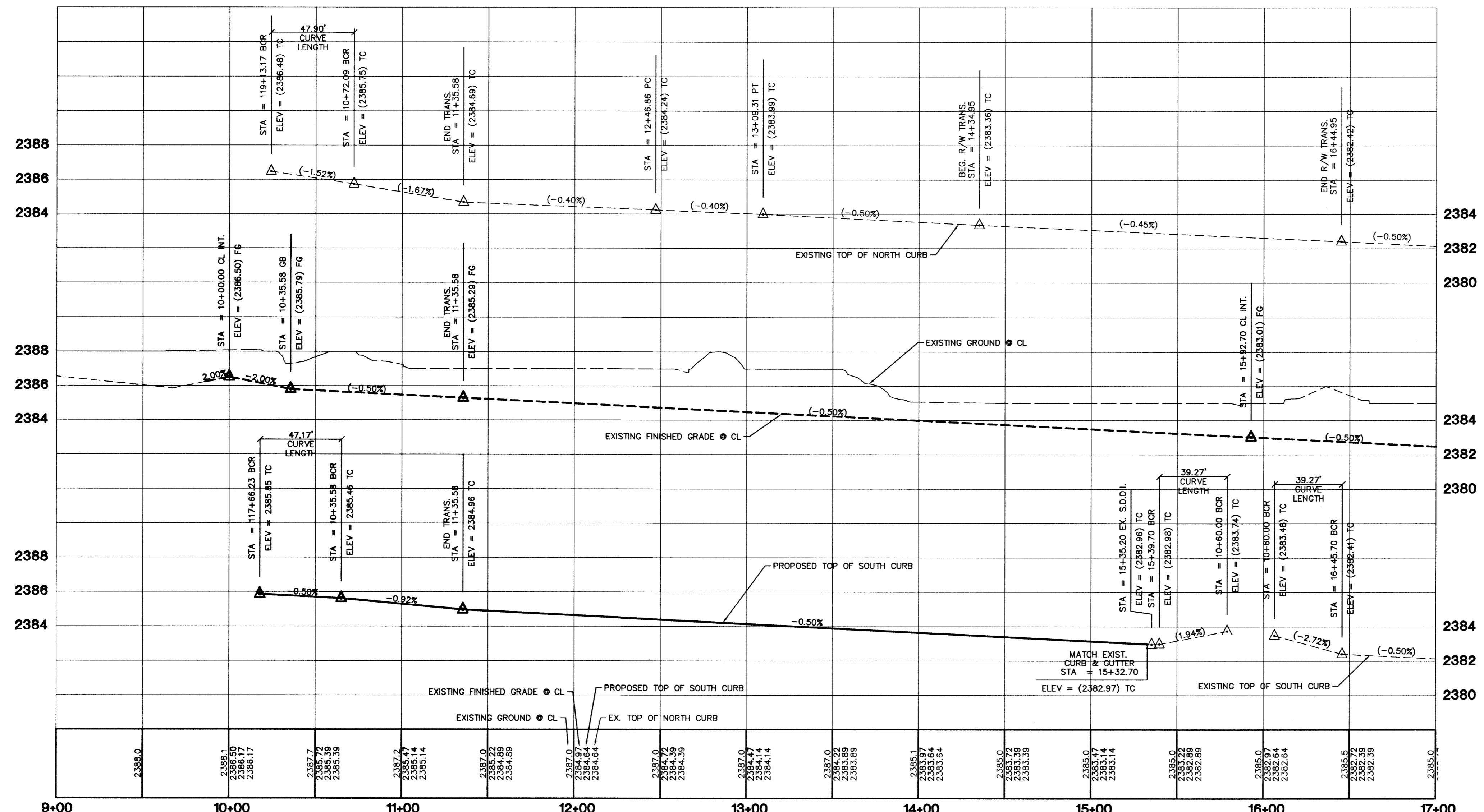
NO.	DIM "A"	DIM "B"	CASE
1	8.0'	8.0'	I

- CONSTRUCTION NOTES:**
- (A) CONSTRUCT "L" CURB & GUTTER PER STD. # 216
 - (B) CONSTRUCT 5' SIDEWALK PER STD. # 234
 - (C) CONSTRUCT 8' CROSS GUTTER PER STD. # 228
 - (D) CONSTRUCT SIDEWALK RAMP PER STD. # 235
 - (E) CONSTRUCT SIDEWALK UNDERDRAIN PER STD. # 236



CURVE TABLE

CURVE	LENGTH	RADIUS	DELTA	TANGENT
C1	47.17	30.00	90°05'28"	30.05
C2	39.27	25.00	90°00'00"	25.00
C3	39.27	25.00	90°00'00"	25.00
C4	31.42	20.00	90°00'00"	20.00
C5	31.42	20.00	90°00'00"	20.00
C6	23.64	54.00	25°05'15"	12.01
C7	127.84	52.00	140°51'33"	146.27
C8	23.64	54.00	25°05'15"	12.01
C9	53.81	34.00	90°11'03"	34.41
C10	31.42	20.00	90°00'00"	20.00
C11	31.42	20.00	90°00'00"	20.00
C12	31.42	20.00	90°00'00"	20.00
C13	31.42	20.00	90°00'00"	20.00
C14	31.42	20.00	90°00'00"	20.00
C15	26.50	34.00	44°39'01"	13.96
C16	190.32	40.49	269°16'59"	41.00
C17	26.50	34.00	44°39'01"	13.96
C18	31.42	20.00	90°00'00"	20.00
C19	31.42	20.00	90°00'00"	20.00
C20	26.50	34.00	44°39'01"	13.96
C21	190.40	40.51	269°19'14"	40.99
C22	26.50	34.00	44°39'01"	13.96
C23	31.42	20.00	90°00'00"	20.00
C24	23.64	54.00	25°05'15"	12.01
C25	127.86	52.03	140°47'26"	146.09
C26	23.64	53.09	25°30'48"	12.02
C27	53.02	33.50	90°41'03"	33.90
C28	23.64	54.00	25°05'15"	12.01
C29	127.30	52.00	140°15'59"	143.91
C30	23.64	54.00	25°05'15"	12.01
C31	53.46	34.00	90°05'28"	34.05
C32	31.38	20.00	89°54'32"	19.97
C33	26.50	34.00	44°39'01"	13.96
C34	190.36	40.50	269°18'02"	41.00
C35	26.50	34.00	44°39'01"	13.96
C36	31.45	20.00	90°05'28"	20.03



PROJECT BENCHMARK
 PROJECT DATUM: NAVD88
 (OLD) CITY OF LAS VEGAS BENCHMARK 1L90-13NES
 NAVD88 ELEVATION: 710.9181 METERS (2322.40 FEET)
 PROJECT DESIGNED USING OLD BENCHMARK
 (NEW) CITY OF LAS VEGAS BENCHMARK 1L90-13NES
 NAVD88 ELEVATION: 710.9181 METERS (2322.40 FEET)
 BRASS CAP IN CONCRETE AT S.W. CORNER OF DECATUR
 AND GRAND TETON
 ONLY BM 413148, NAVD 88 ELEV=710.953
 METERS (2322.62 FEET) 1" DIAMETER CONCRETE MONUMENT
 77 FEET SOUTH & 54 FEET WEST N.E. CORNER
 SEC. 13T19R06E 10' EAST OF LARGE POWER POLE
 (-0.14 FEET) TO GET NEW PUBLISHED DATUM

BASIS OF BEARINGS
 THE BASIS OF BEARINGS FOR THIS PROJECT IS GRID NORTH
 AS DEFINED BY THE NEVADA COORDINATE SYSTEM OF
 1983 (NCS83), EAST ZONE, (2701), DETERMINED BY CLARK
 COUNTY GIS CONTROL POINTS 802, 803, 804 AND 805,
 AS SHOWN ON A RECORD OF SURVEY ON FILE IN THE
 CLARK COUNTY, NEVADA, RECORDER'S OFFICE, IN BOOK 88
 OF SURVEYS, AT PAGE 53.

Call before you Dig
 1-800-227-2600
 Call before you Overhead
 1-702-593-6111

CITY OF LAS VEGAS

KB HOME
 750 PILOT ROAD, SUITE F
 LAS VEGAS, NV 89119
 (702) 814-2800

STREET PLAN & PROFILE
IRON MOUNTAIN ROAD
STA. 10+00.00 TO 17+00.00

IRON MOUNTAIN RANCH
VILLAGE 11
UNIT 2

DRAWN BY: JUNE 03
 DESIGNED BY: JUNE 03
 CHECKED BY: JUNE 03
 PROJECT NO.: 5977-2
 SCALE: 1"=40' HORZ.
 1"=8' VERT.

EXPIRES 12-31-05

SHEET
S1
 OF 28 SHEETS
 DRAWING NO.
1074604-12

PH: 407 VILLAGE 11 UNIT 2 (S1)