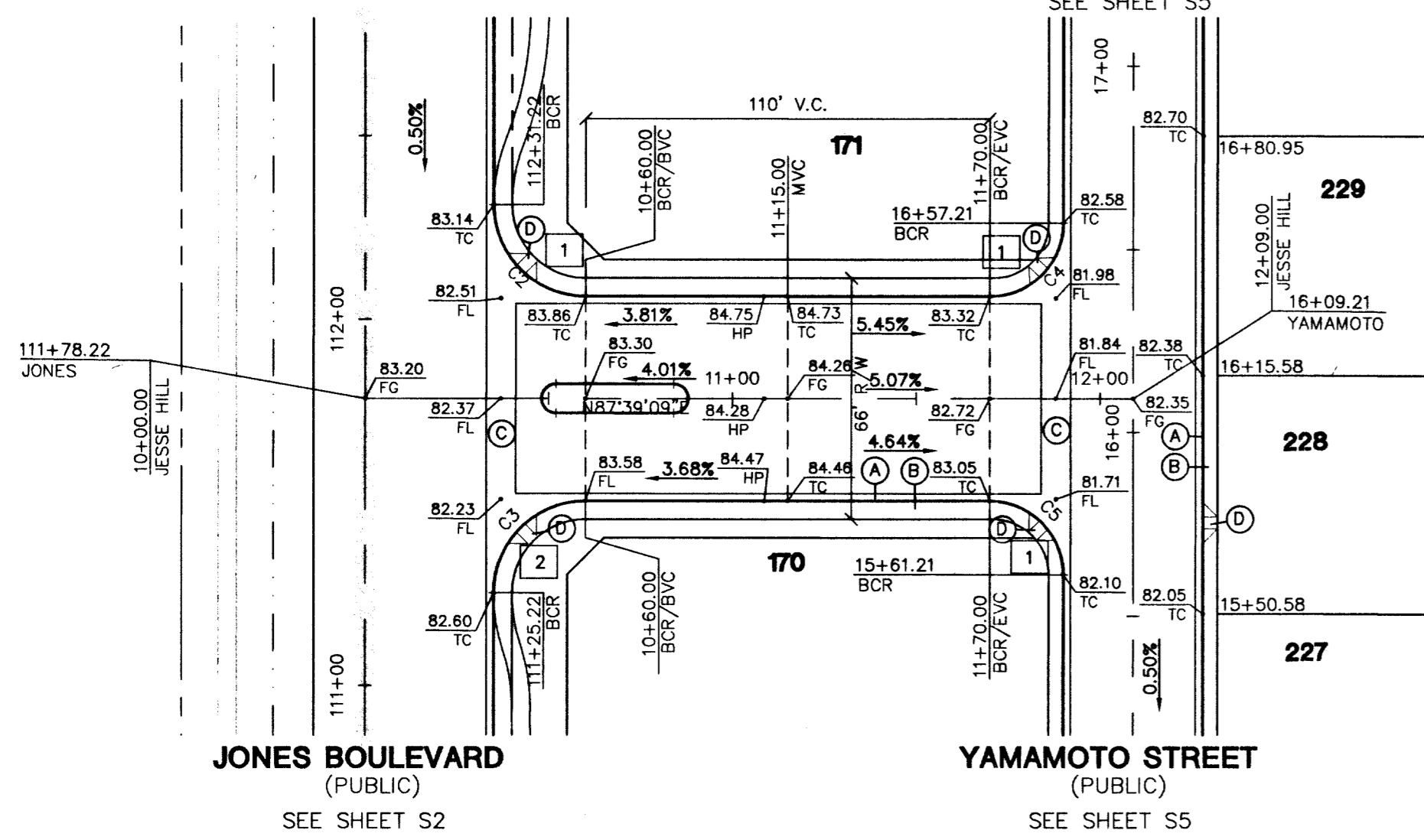


JONES BOULEVARD  
(PUBLIC)  
SEE SHEET S2

YAMAMOTO STREET  
(PUBLIC)  
SEE SHEET S5



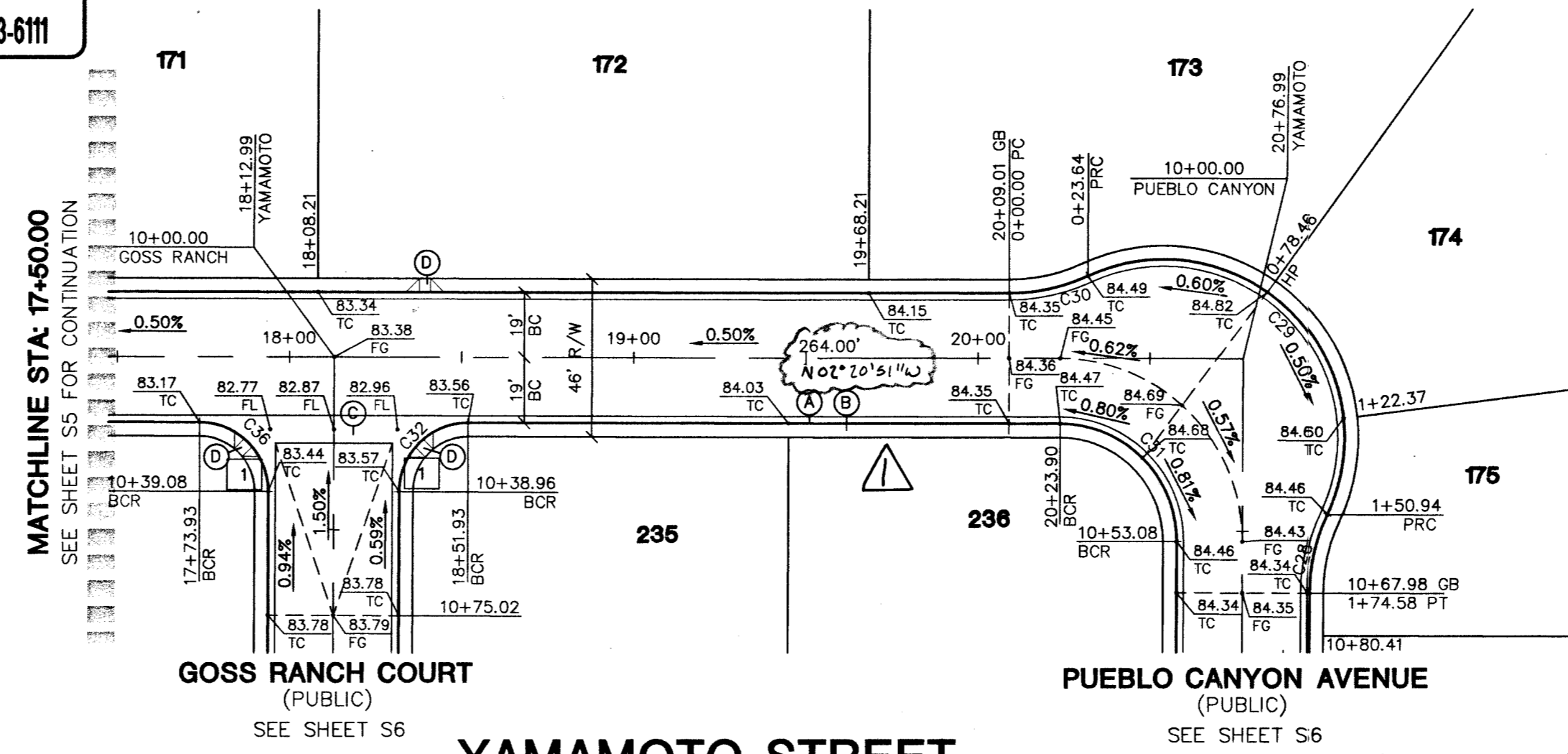
JONES BOULEVARD  
(PUBLIC)  
SEE SHEET S2

YAMAMOTO STREET  
(PUBLIC)  
SEE SHEET S5

JESSE HILL AVENUE  
(PUBLIC)

Call before you Dig  
1-800-227-2600

Call before you Overhead  
1-702-593-6111

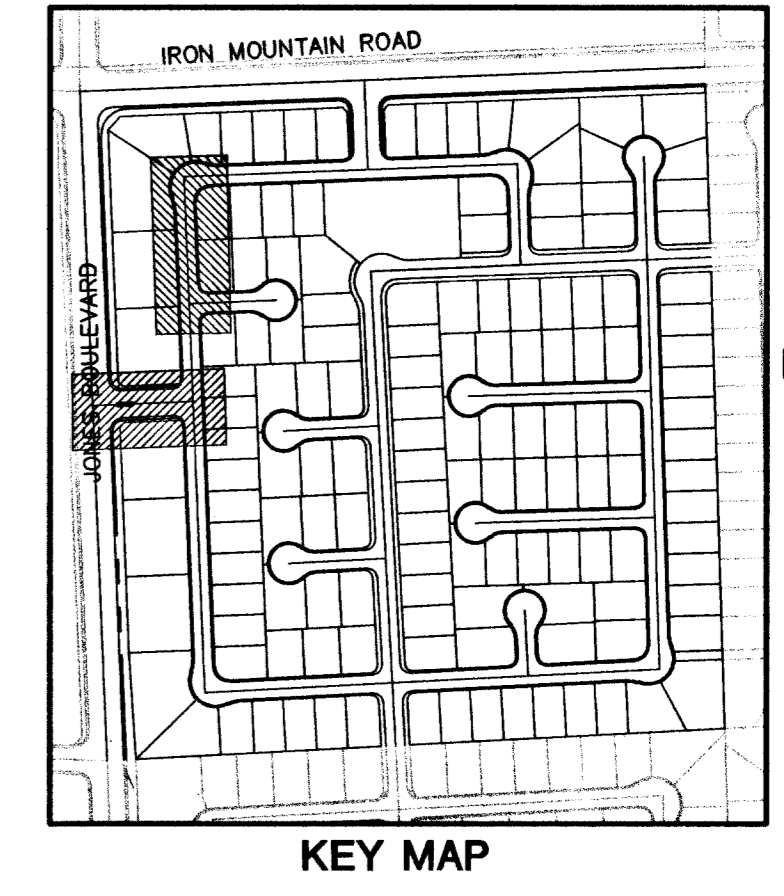


GOSS RANCH COURT  
(PUBLIC)  
SEE SHEET S6

PUEBLO CANYON AVENUE  
(PUBLIC)  
SEE SHEET S6

YAMAMOTO STREET  
(PUBLIC)

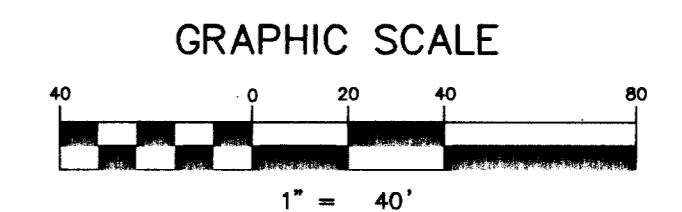
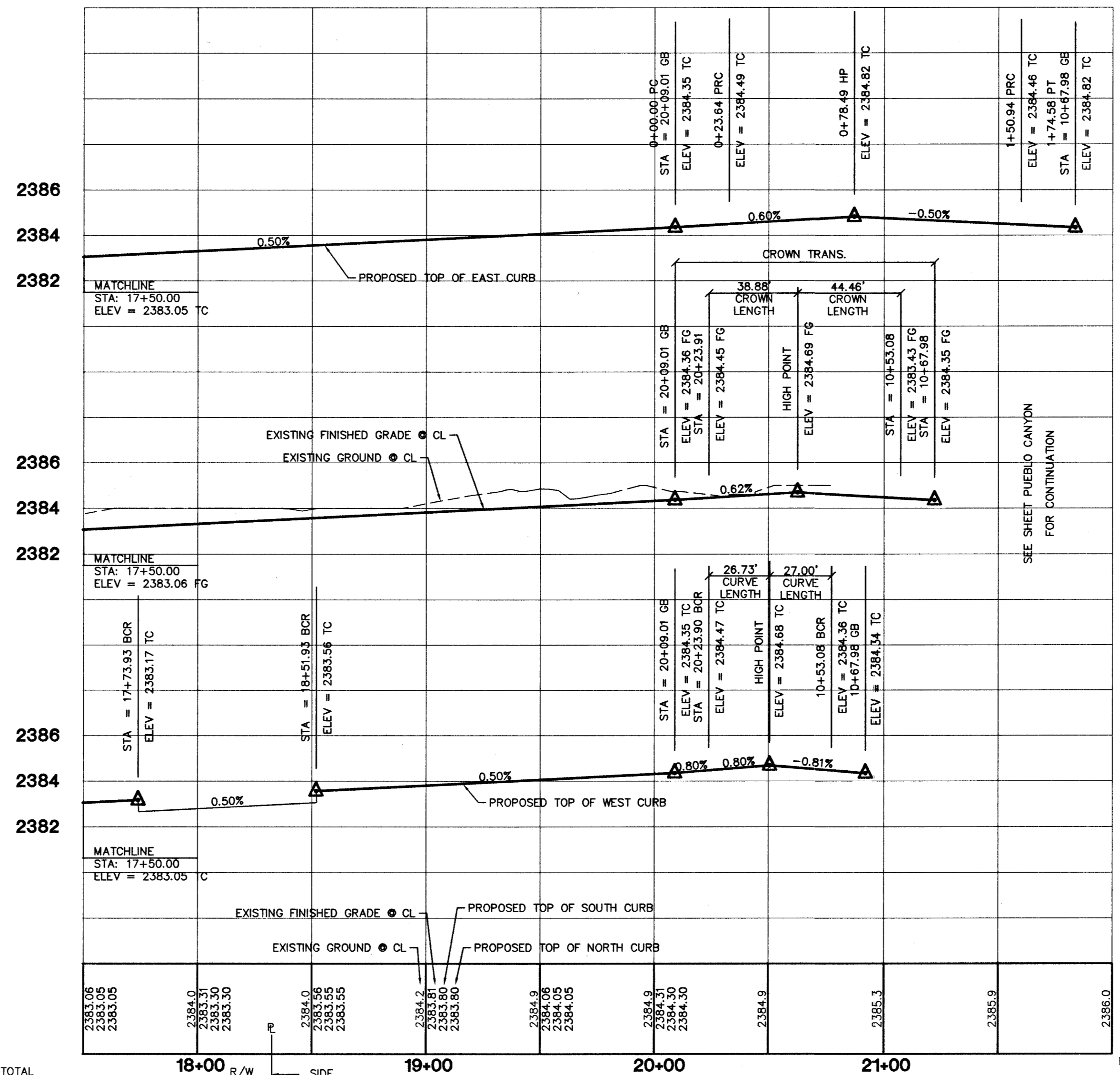
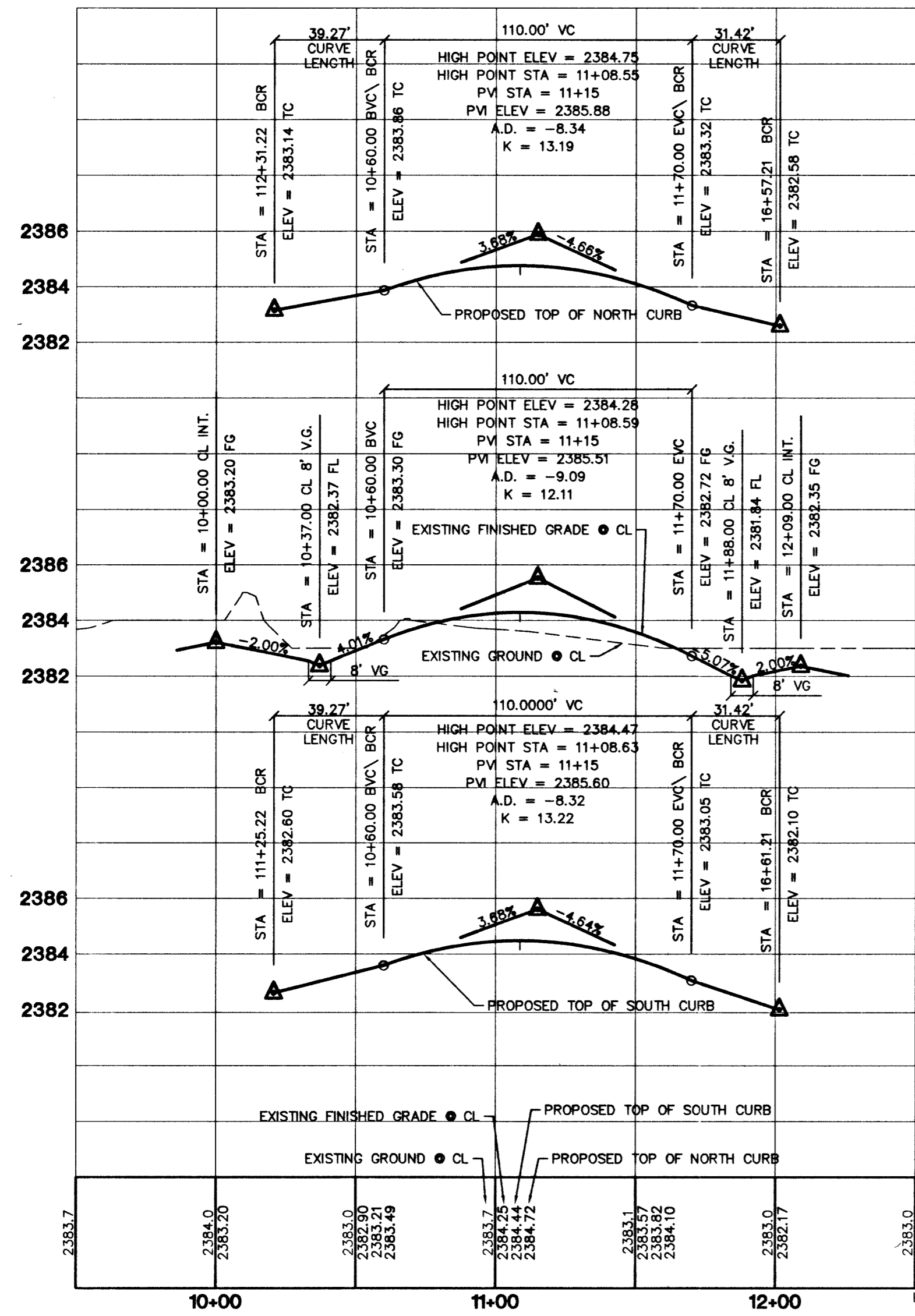
PROFILE SCALES:  
HORZ. = 1"=40'  
VERT. = 1"=4'



**SIDEWALK RAMPS TABLE**  
PER STD. DWG. 235 CASE 1

NO.	DIM "A"	DIM "B"	CASE
1	8.0'	8.0'	I
2	9.5'	4.5'	I

- CONSTRUCTION NOTES:**
- (A) CONSTRUCT "L" CURB & GUTTER PER STD. # 216
  - (B) CONSTRUCT 5' SIDEWALK PER STD. # 234
  - (C) CONSTRUCT 8' CROSS GUTTER PER STD. # 228
  - (D) CONSTRUCT SIDEWALK RAMP PER STD. # 235
  - (E) CONSTRUCT SIDEWALK UNDERDRAIN PER STD. # 236

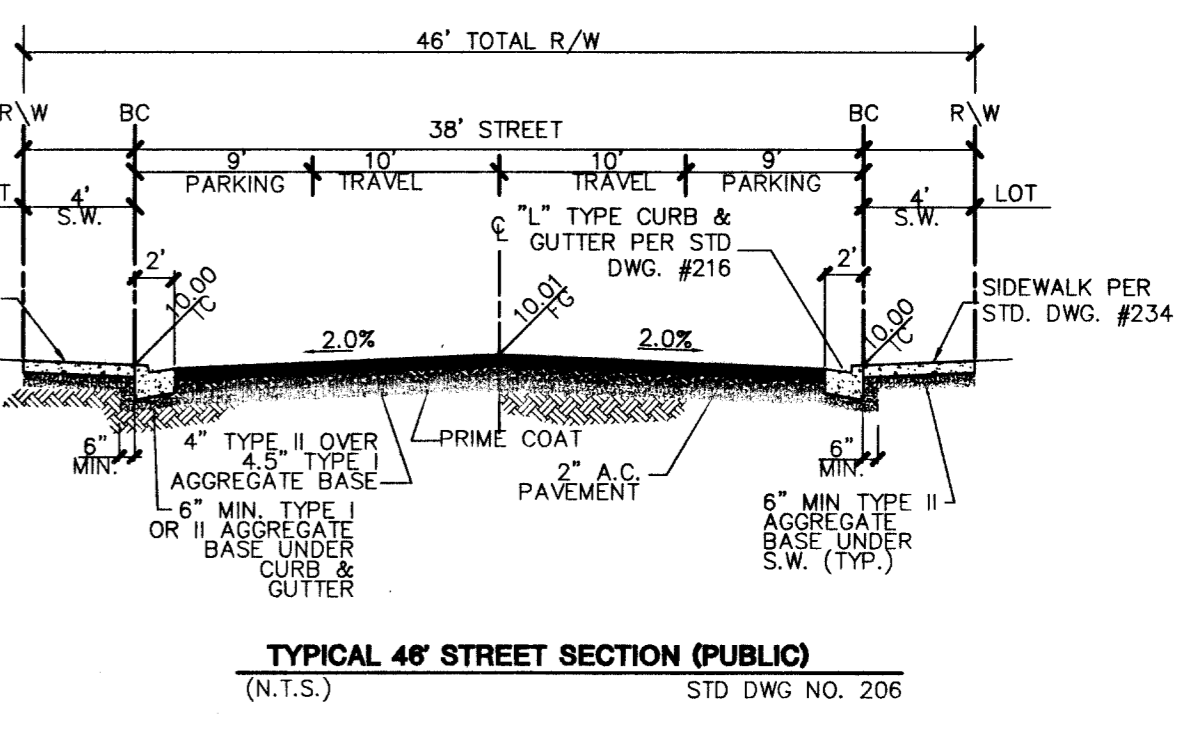
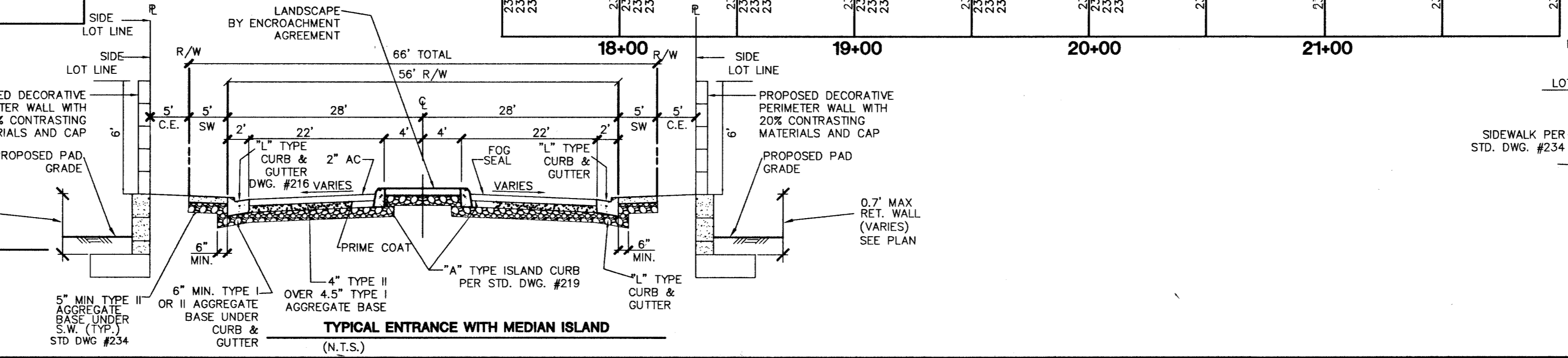


**CURVE TABLE**

CURVE	LENGTH	RADIUS	DELTA	TANGENT
C1	47.17	30.00	90°05'28"	30.05
C2	39.27	25.00	90°00'00"	25.00
C3	39.27	25.00	90°00'00"	25.00
C4	31.42	20.00	90°00'00"	20.00
C5	31.42	20.00	90°00'00"	20.00
C6	23.64	54.00	140°51'33"	12.01
C7	127.84	52.00	140°51'33"	146.27
C8	23.64	54.00	25°05'15"	12.01
C9	53.81	34.00	90°41'03"	34.41
C10	31.42	20.00	90°00'00"	20.00
C11	31.42	20.00	90°00'00"	20.00
C12	31.42	20.00	90°00'00"	20.00
C13	31.42	20.00	90°00'00"	20.00
C14	31.42	20.00	90°00'00"	20.00
C15	26.50	34.00	44°39'01"	13.96
C16	190.32	40.49	269°18'59"	41.00
C17	26.50	34.00	44°39'01"	13.96
C18	31.42	20.00	90°00'00"	20.00
C19	31.42	20.00	90°00'00"	20.00
C20	26.50	34.00	44°39'01"	13.96
C21	190.40	40.51	269°19'14"	40.99
C22	26.50	34.00	44°39'01"	13.96
C23	31.42	20.00	90°00'00"	20.00
C24	23.64	54.00	25°05'15"	12.01
C25	127.86	52.03	140°47'28"	146.09
C26	23.64	53.09	25°39'48"	12.02
C27	53.02	33.50	90°41'03"	33.90
C28	23.64	54.00	25°05'15"	12.01
C29	127.30	52.00	140°15'59"	143.91
C30	23.64	54.00	25°05'15"	12.01
C31	53.46	34.00	90°05'28"	34.05
C32	31.38	20.00	89°54'32"	19.97
C33	26.50	34.00	44°39'01"	13.96
C34	190.36	40.50	269°18'02"	41.00
C35	26.50	34.00	44°39'01"	13.96
C36	31.45	20.00	90°05'28"	20.03

**PROJECT BENCHMARK**  
PROJECT DATUM: NAVD88  
(OLD) CITY OF LAS VEGAS BENCHMARK 1LV90-13NES  
NAVD88 ELEVATION: 710.9608 METERS (2332.54 FEET)  
PROJECT DESIGNED USING OLD BENCHMARK  
(NEW) CITY OF LAS VEGAS BENCHMARK 1LV90-13NES  
NAVD88 ELEVATION: 710.9181 METERS (2332.40 FEET)  
BRASS CAP IN CONCRETE AT S.W. CORNER OF DECATUR  
AND GRAND TETON  
ONLY BM 413148, NAVD 88 ELEV=710.953  
METERS (2332.52 FEET) 1" DIAMETER CONCRETE MONUMENT  
77 FEET SOUTH & 54 FEET WEST N.E. CORNER  
SEC. 13T19R60E 10' EAST OF LARGE POWER POLE  
(-0.14 FEET) TO GET NEW PUBLISHED DATUM

**BASIS OF BEARINGS**  
THE BASIS OF BEARINGS FOR THIS PROJECT IS GRID NORTH  
AS DEFINED BY THE NEVADA COORDINATE SYSTEM OF  
1983 (NCS83), EAST ZONE, (2701), DETERMINED BY CLARK  
COUNTY GIS CONTROL POINTS 802, 803, 804, AND 805,  
AS SHOWN ON A RECORD OF SURVEY ON FILE IN THE  
CLARK COUNTY, NEVADA, RECORDER'S OFFICE, IN BOOK 88  
OF SURVEYS, AT PAGE 53.



**REVISION**

NO.	DATE	BY	REVISION
1	5/15/14	KLM	REVISE BEARINGS ON CENTERLINE
2			
3			
4			
5			
6			
7			

**CITY OF LAS VEGAS**

**KB HOME**  
750 PILOT ROAD, SUITE F  
LAS VEGAS, NV 89119  
(702) 814-2500

**STREET PLAN & PROFILE**  
JESSE HILL AVENUE  
YAMAMOTO STREET

**IRON MOUNTAIN RANCH**  
VILLAGE 11  
UNIT 2

**DESIGNED BY:** JUNE 03  
**CHECKED BY:** JUNE 03  
**PROJECT NO.:** 5977-2  
**SCALE:** 1"=40' HORZ.  
1"=4' VERT.

**PROFESSIONAL ENGINEER**  
KENNETH NICHOLSON  
No. 10593  
CIVIL  
EXPIRES 12-31-05

**SHEET**  
S4  
13 OF 28 SHEETS  
DRAWING NO. 10744604-11-2