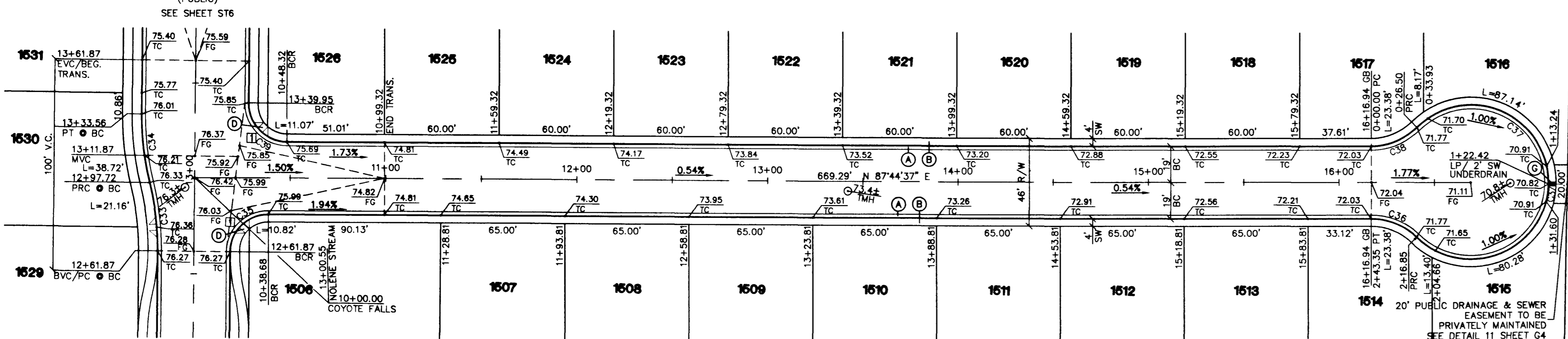
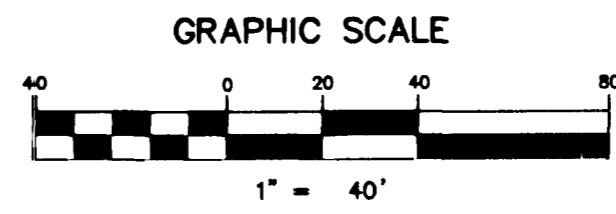
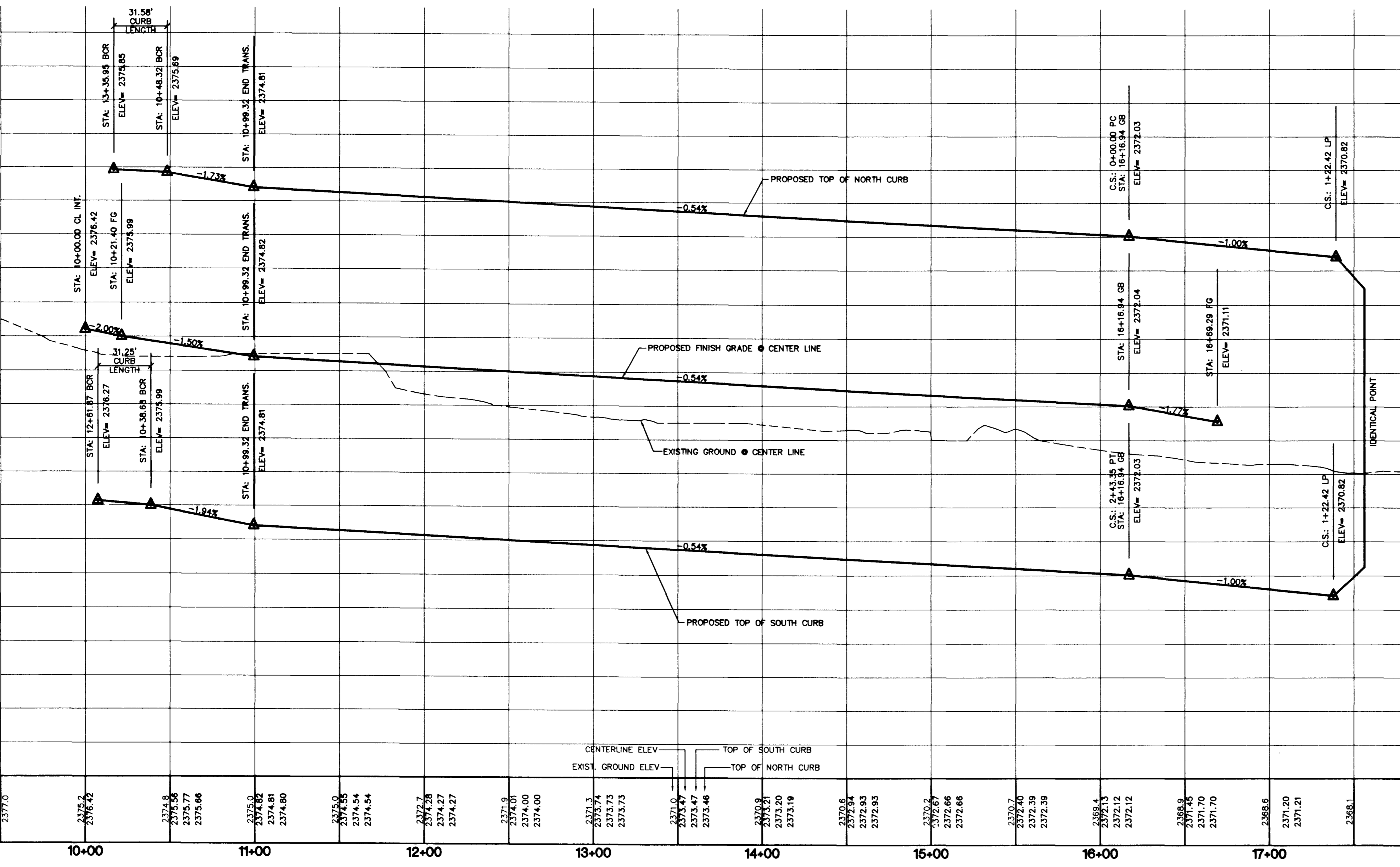


NOLENE STREAM STREET
(PUBLIC)
SEE SHEET ST6

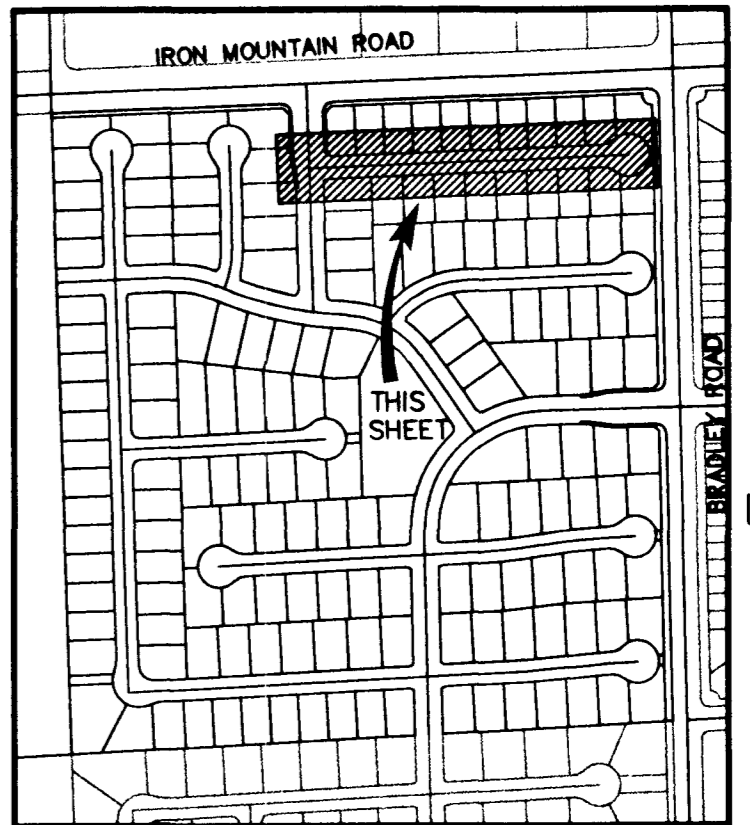


NOLENE STREAM STREET
(PUBLIC)
SEE SHEET ST6

COYOTE FALLS COURT
(PUBLIC)

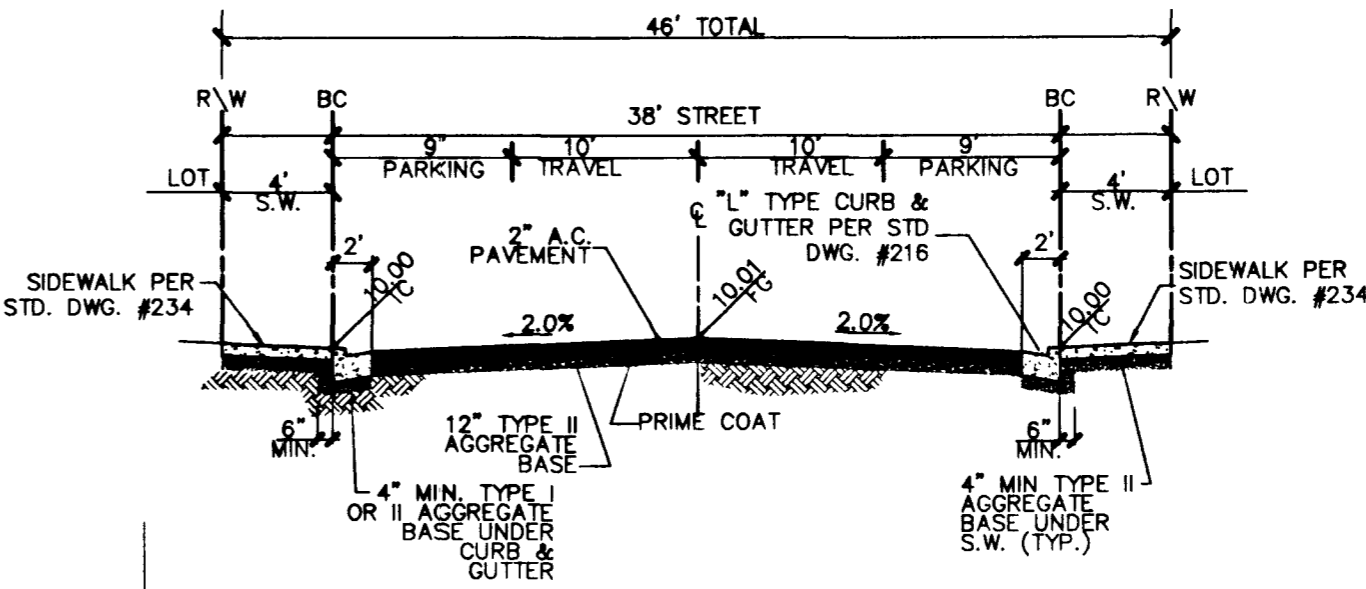


PROFILE SCALE:
HORIZ. 1" = 40'
VERT. 1" = 4'



CURVE TABLE

CURVE	LENGTH	RADIUS	DELTA	TANGENT
C1	23.64	54.00	25°05'15"	12.01
C2	128.35	52.00	141°23'21"	148.58
C3	23.64	54.00	25°05'15"	12.01
C4	54.15	34.00	91°14'50"	34.75
C5	30.98	20.00	88°45'10"	19.57
C6	26.50	34.00	44°39'01"	13.96
C7	190.36	40.50	269°18'02"	41.00
C8	26.50	34.00	44°39'01"	13.96
C9	31.81	20.00	91°14'50"	20.44
C10	31.81	20.00	90°33'48"	20.20
C11	31.22	20.00	89°26'12"	19.80
C12	26.50	34.00	44°39'01"	13.96
C13	190.36	40.50	269°18'02"	41.00
C14	26.50	34.00	44°39'01"	13.96
C15	31.81	20.00	90°33'48"	20.20
C16	31.22	20.00	89°26'12"	19.80
C17	76.03	219.00	19°53'27"	38.40
C18	82.35	181.00	26°04'04"	41.90
C19	34.16	20.00	97°51'14"	22.95
C20	36.25	181.00	11°28'25"	18.18
C21	26.50	34.00	44°39'01"	13.96
C22	190.36	40.50	269°18'02"	41.00
C23	26.50	34.00	44°39'01"	13.96
C24	58.41	219.00	15°16'50"	29.38
C25	29.35	20.00	84°04'30"	18.03
C26	103.86	731.00	8°08'25"	52.02
C27	35.98	20.00	103°03'56"	25.17
C28	288.21	769.00	21°28'25"	145.82
C29	29.08	20.00	83°19'04"	17.79
C30	33.83	731.00	2°39'05"	16.92
C31	56.70	219.00	14°50'05"	28.51
C32	46.86	181.00	14°50'05"	23.56
C33	36.22	145.00	14°18'42"	18.20
C34	36.22	145.00	14°18'42"	18.20
C35	31.25	20.00	89°11'40"	19.84
C36	26.50	34.00	44°39'01"	13.96
C37	190.36	40.50	269°18'02"	41.00
C38	26.50	34.00	44°39'01"	13.96
C39	31.58	20.00	90°28'20"	20.17



TYPICAL 46' STREET SECTION (PUBLIC)
(N.T.S.)

SIDEWALK RAMPS TABLE
PER STD. DWG 235 CASE I

NO.	DIM "A"	DIM "B"	CASE
1	8.0'	8.0'	I

CONSTRUCTION NOTES

- (A) CONSTRUCT "L" CURB & GUTTER PER STD. # 216
- (B) CONSTRUCT 5' SIDEWALK PER STD. # 234
- (C) CONSTRUCT 8" CROSS GUTTER PER STD. # 228
- (D) CONSTRUCT SIDEWALK RAMP PER STD. # 235
- (E) CONSTRUCT "ROLL" CURB & GUTTER PER STD. # 217A
- (F) CONSTRUCT DEPRESSED CURB PER DETAIL SHEET D1
- (G) CONSTRUCT SIDEWALK UNDERDRAIN PER STD. # 236
- (H) CONSTRUCT 10' CURB TRANSITION "ROLL" TO "L"

NOTE: CONTRACTOR SHALL VERIFY HORIZONTAL AND VERTICAL LOCATION OF EXISTING UTILITIES AND NOTIFY THE DESIGN ENGINEER IMMEDIATELY OF ANY DISCREPANCIES PRIOR TO CONSTRUCTION.

BENCHMARK

PROJECT DATUM: NAVD88
(OLD) CITY OF LAS VEGAS BENCHMARK 11V90-13NES
NAVD88 ELEVATION: 710.9608 METERS (2332.54 FEET)
PROJECT DESIGNED USING OLD BENCHMARK
NEW CITY OF LAS VEGAS BENCHMARK 11V90-13NES
NAVD88 ELEVATION: 710.9181 METERS (2332.40 FEET)
(-0.14 FEET) TO GET NEW PUBLISHED DATUM
ONLY B.M. 413148 NAVD 88 ELEV=710.953
METERS (2331.97 FEET) CONCRETE MONUMENT
77 FEET SOUTH & 53 FEET WEST OF N.E. CORNER
SEC. 13T39R02E 10' EAST OF LARGE POWER POLE.

BASIS OF BEARINGS

THE BASIS OF BEARINGS FOR THIS PROJECT IS GRID NORTH AS DEFINED BY THE NEVADA COORDINATE SYSTEM OF 1983 (NCS83), EAST ZONE, (2701), DETERMINED BY CLARK COUNTY GIS CONTROL POINTS 802, 803, 804, AND 805, AS SHOWN ON A RECORD OF SURVEY ON FILE IN THE CLARK COUNTY, NEVADA, RECORDER'S OFFICE, IN BOOK 88 OF SURVEYS, AT PAGE 53.

Call before you Dig
1-800-227-2600

Call before you Overhead
1-702-593-6111

CITY OF LAS VEGAS
2727 SOUTH RAINBOW BOULEVARD LAS VEGAS, NEVADA 89146-5148
PH. (702) 973-7500 FAX (702) 362-2597

KB HOME
750 PILOT ROAD, SUITE F
LAS VEGAS, NV 89119
(702) 617-2500

STREET PLAN & PROFILE
COYOTE FALLS COURT
STA: 10+00.00 - STA: 16+69.29

IRON MOUNTAIN RANCH
VILLAGE 10
UNIT 2

DRAWN BY: R.M.S. SEPT. '02
DESIGNED BY: R.M.S. SEPT. '02
CHECKED BY: RYN. SEPT. '02
PROJECT NO: 5976-2
SCALE: 1"=40' HORIZ.
1"=4' VERT.

REVISIONS:
7
6
5
4
3
2
1
REV. DATE BY

PROFESSIONAL ENGINEER
KENNETH ROYALSON
No. 10539
CIVIL
EXPIRES 12-31-05
SHEET
ST7
18 of 26 SHEETS
DRAWING NO.
10744604-10-2

62217