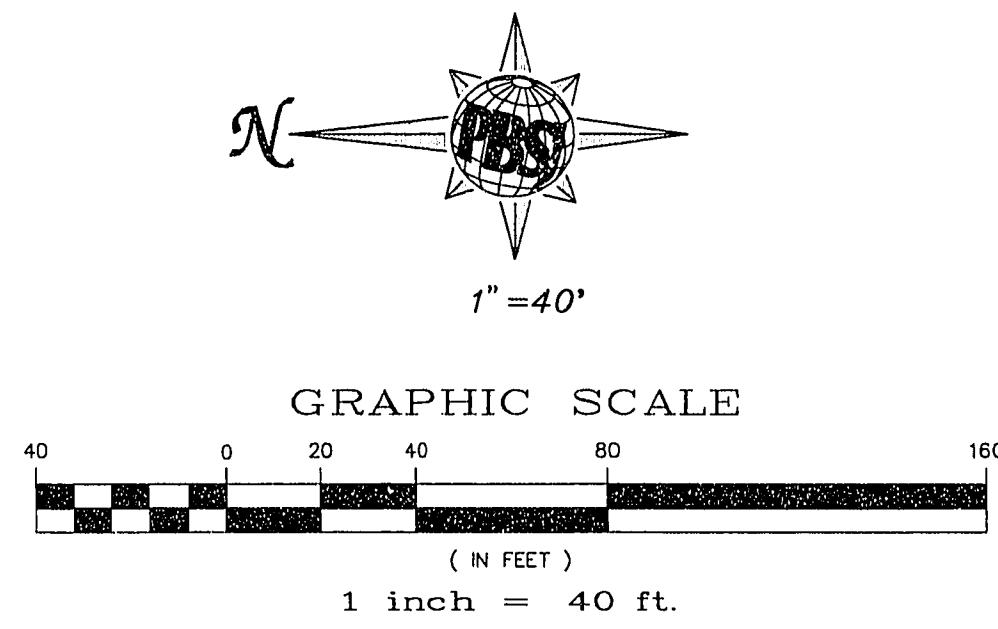
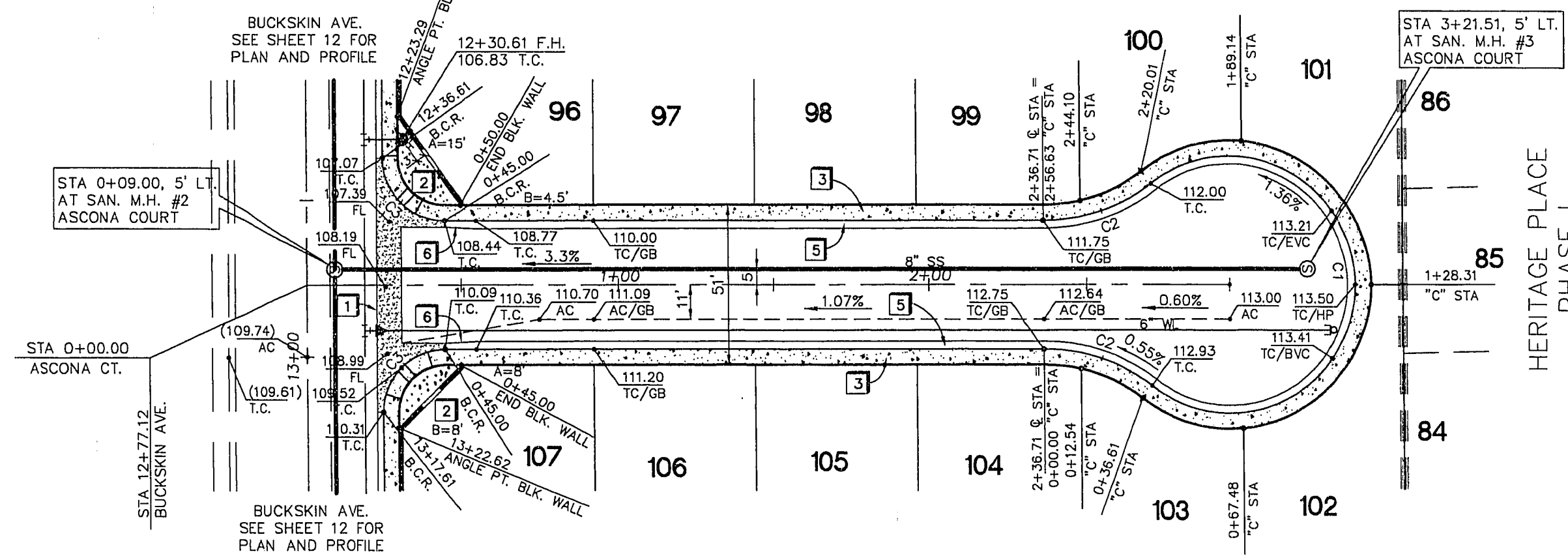


Call before you Dig
1-800-227-2600

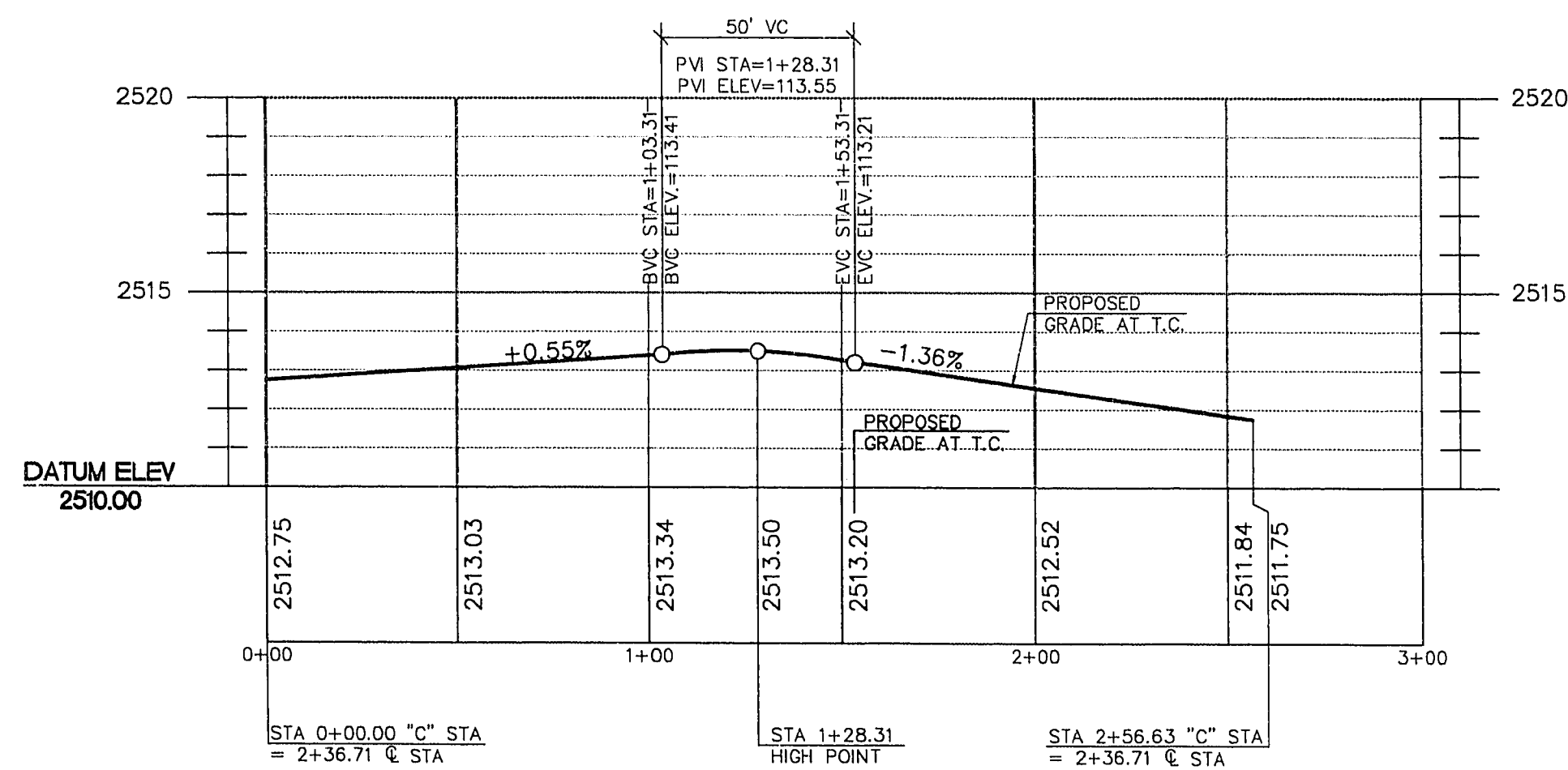


BACK OF CURB CURVE DATA TABLE

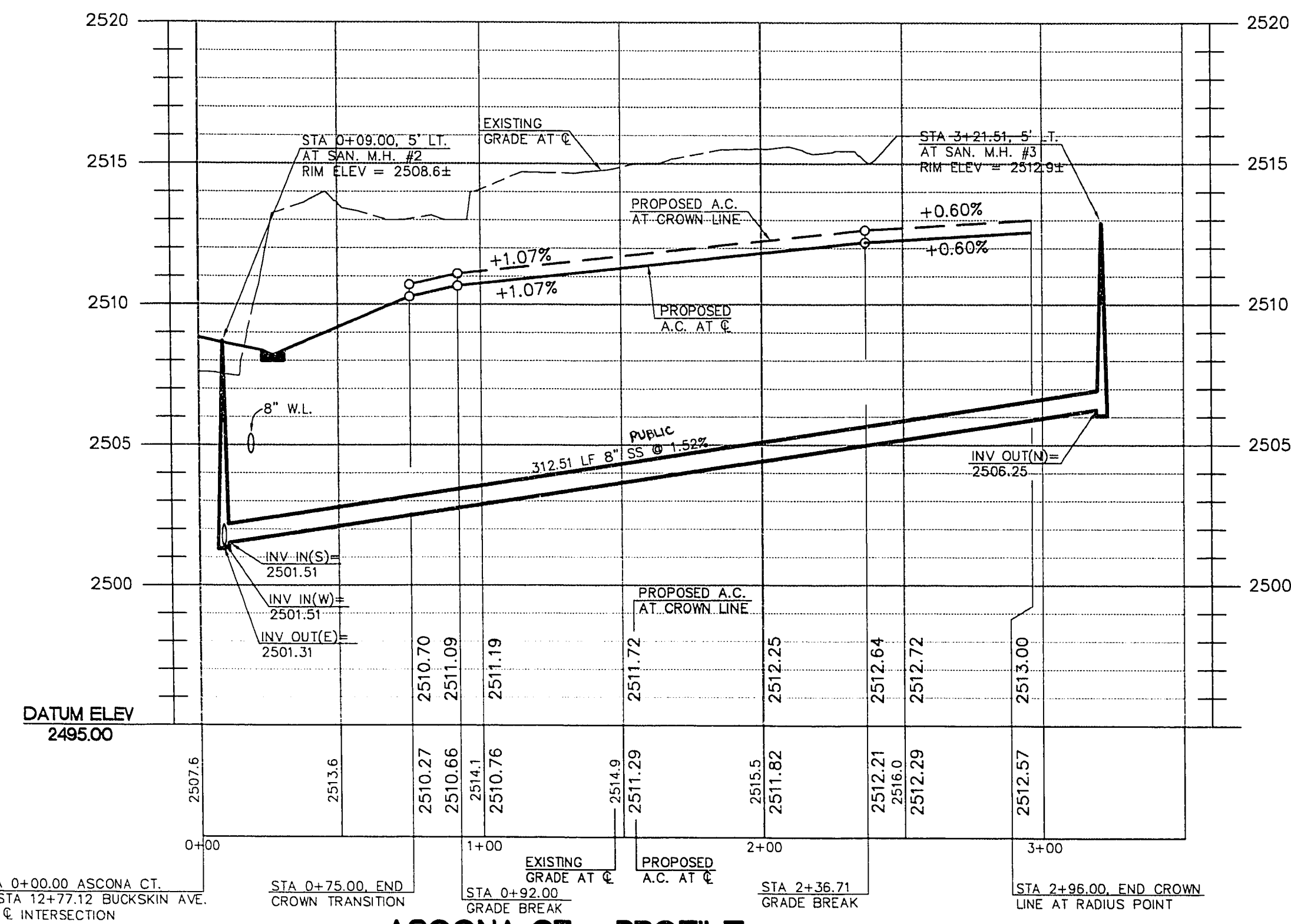
No.	RADIUS	DELTA	LENGTH	TANGENT
C1	41.00'	256°17'19"	183.40'	---
C2	55.00'	38°08'39"	36.62'	19.02'
C3	20.00'	90°00'00"	31.42'	20.00'



ASCONA CT. - PLAN VIEW
HORIZONTAL SCALE: 1" = 40'



CUL-DE-SAC PROFILE
HORIZONTAL SCALE: 1" = 40'
VERTICAL SCALE: 1" = 4'



ASCONA CT. - PROFILE
HORIZONTAL SCALE: 1" = 40'
VERTICAL SCALE: 1" = 4'

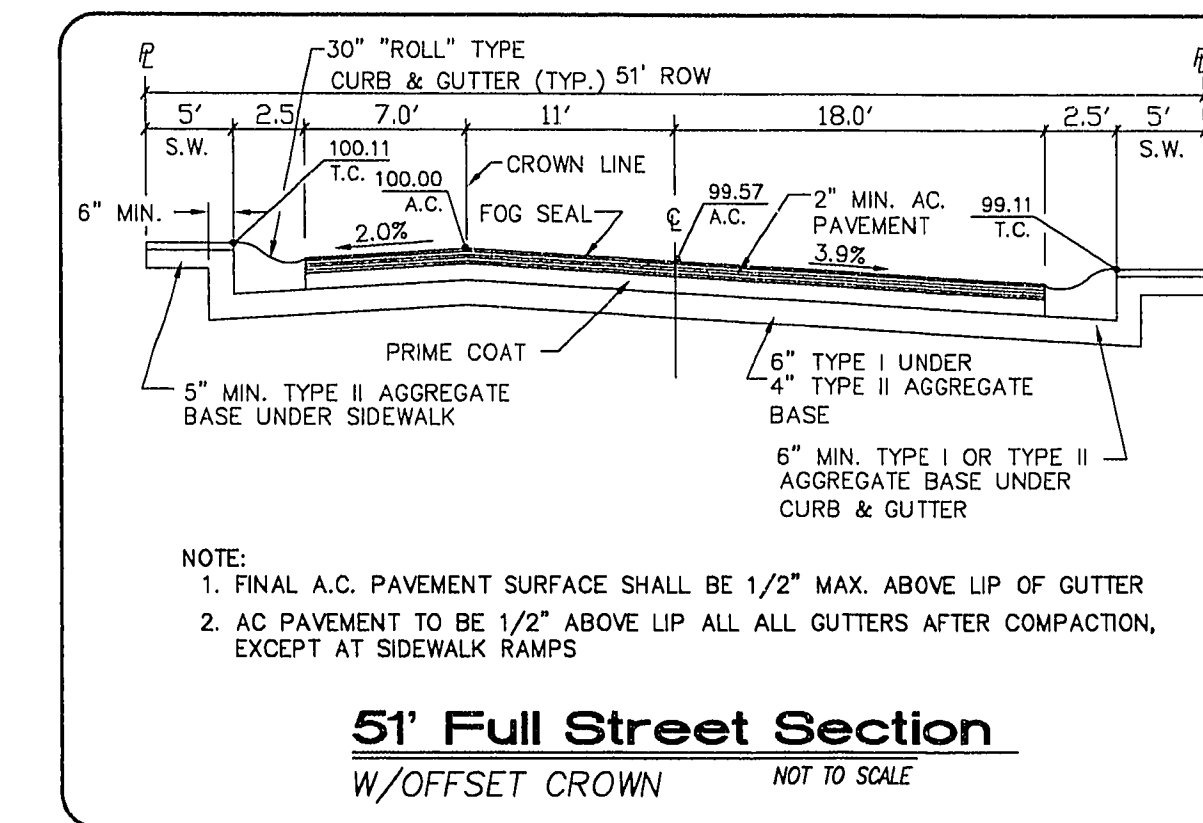
BENCHMARK
QLV00 17NES
RIVET IN PLATE IN TOP OF CURB,
SW RETURN CHEYENNE AVE.
AND RAMPART BLVD.
ELEVATION = 2448.333

CONSTRUCTION NOTES

- 1) CONSTRUCT 8" CONCRETE VALLEY GUTTER PER CLARK COUNTY AREA STANDARD DWG. NO. 228.
- 2) CONSTRUCT SIDEWALK RAMP (CASE 1) PER CLARK COUNTY AREA STANDARD DWG. NO. 235. (TRANSITION LENGTHS A & B SHOWN ON PLAN, 2-3.3').
- 3) CONSTRUCT 5' WIDE CONCRETE SIDEWALK PER CLARK COUNTY AREA STANDARD DWG. NO. 234.
- 4) CONSTRUCT "L" TYPE CURB & GUTTER PER CLARK COUNTY AREA STANDARD DWG. NO. 216.
- 5) CONSTRUCT 30" "ROLL" TYPE CURB & GUTTER. SEE DETAIL SHEET 13.
- 6) 10' TRANSITION FROM "ROLL" CURB TO L-CURB.

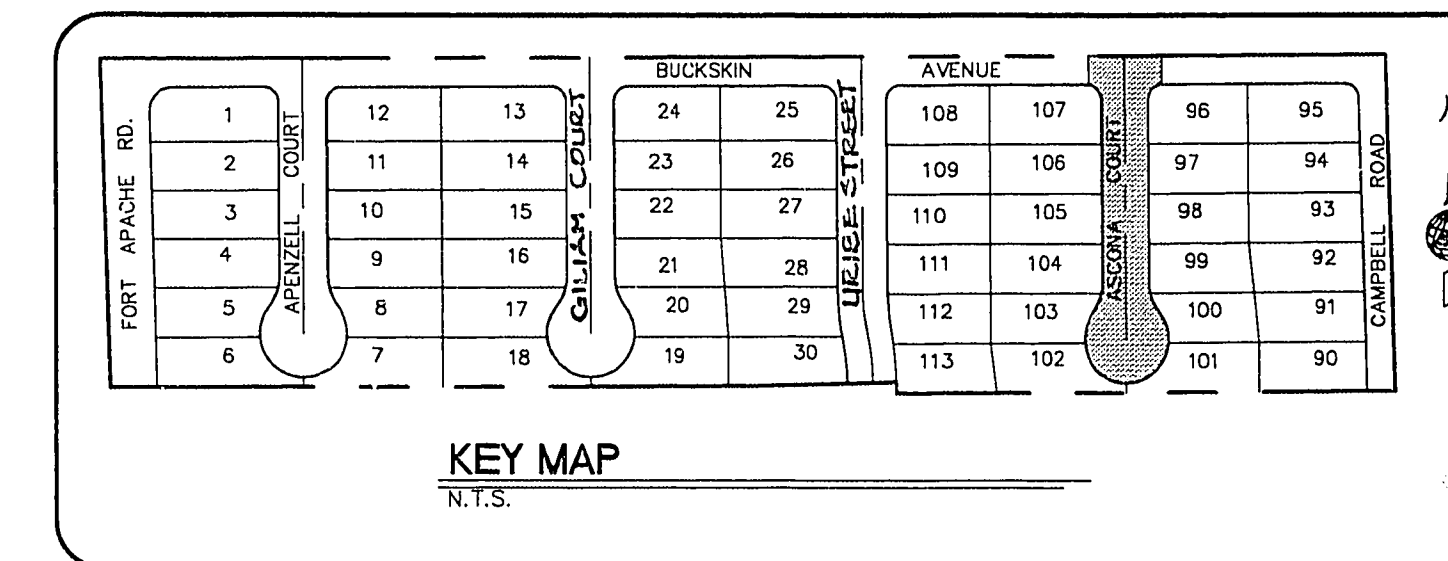
GENERAL NOTES

1. ADD 2400' TO PLAN VIEW ELEVATIONS.
2. ALL STATIONING IS CENTERLINE STATIONING UNLESS OTHERWISE NOTED.
3. SEWER LENGTHS ARE FROM CENTER OF MANHOLE TO CENTER OF MANHOLE.
4. "C" STA INDICATES CUL-DE-SAC STATIONING AT BACK OF CURB.

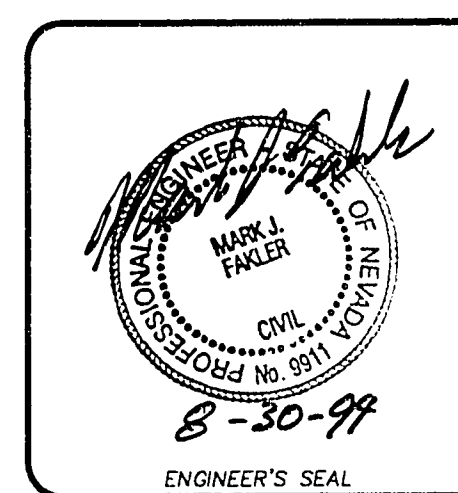


NOTE:
1. FINAL A.C. PAVEMENT SURFACE SHALL BE 1/2" MAX. ABOVE LIP OF GUTTER
2. AC PAVEMENT TO BE 1/2" ABOVE LIP ALL ALL GUTTERS AFTER COMPACTION, EXCEPT AT SIDEWALK RAMPS

51' Full Street Section
W/OFFSET CROWN NOT TO SCALE



KEY MAP
N.T.S.



Job Number	Scale	Drawn by	Checked by	Date	File No.
7214.573	1" = 40'	RMM	MF	06-09-94	573IMP
Sheet Number					
8 OF 13					

No.	REVISIONS	Date	Inci.	Appr.	Date

PHASE II
ASCONA COURT
PLAN AND PROFILE

107Y-4303-2

11-10-131

C:\dms51573\5732-06 Thu Jun 9 15:04:55 1994 P.B.S. & J. - Mr. BOY