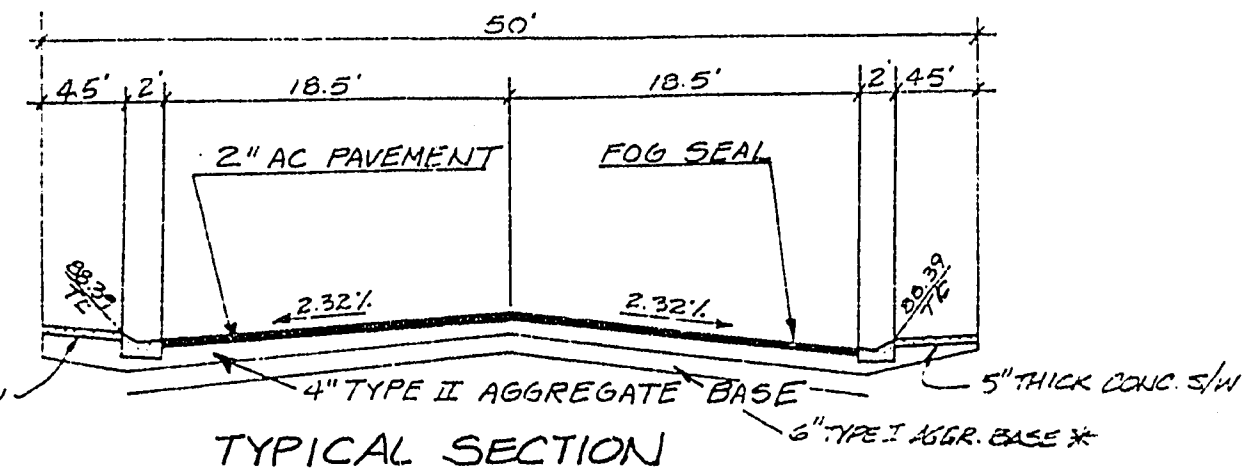


CURVE	DELTA	RADIUS	LENGTH	CHORD	TANGENT	LINE	BEARING	DISTANCE
C1	03°37'00"	833.00'	52.58'	52.57'	28.30'	L1	S 00°32'07" W	24.00'
C2	45°45'11"	90.00'	71.87'	69.97'	37.97'	L2	N 89°27'53" W	42.47'
						L3	S 65°09'07" W	32.17'
						L4	N 59°27'53" W	14.19'

ESTIMATE OF QUANTITIES

DESCRIPTION	AMOUNT	UNIT
2 1/2" A.C. PAVT.	3883	SY
4" TYPE II AG. BASE	432	CY
4.5" CONC. SIDEWALK	7921	SF
24" ROLL TYPE CURB	1765	LF
100W HPS ST. LIGHT	8	EA
#3/8" PULL BOX	3	EA



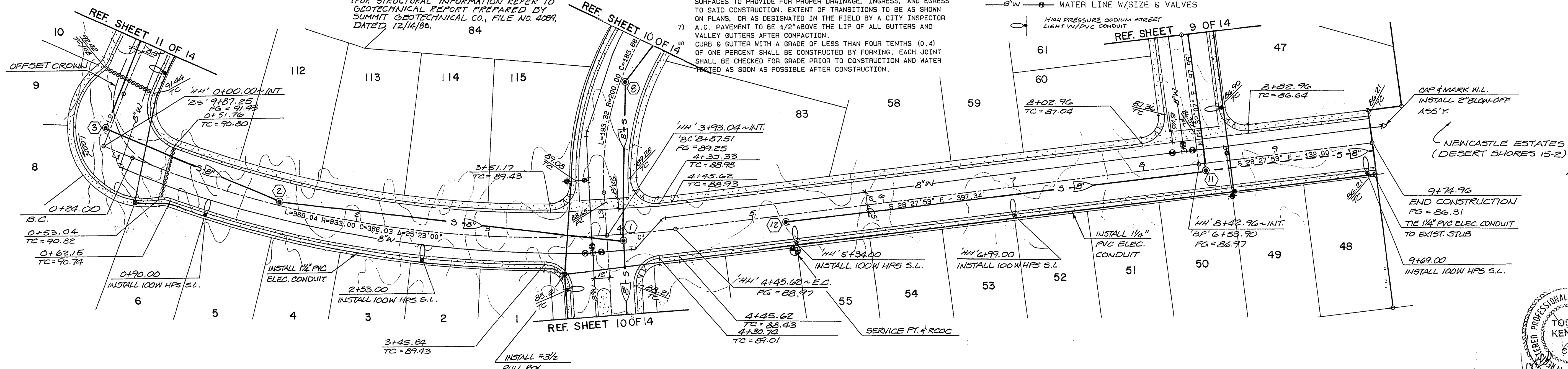
TYPICAL SECTION
 (FOR STRUCTURAL INFORMATION REFER TO
 GEOTECHNICAL REPORT PREPARED BY
 SUMMIT GEOTECHNICAL CO., FILE NO. 4089,
 DATED 12/16/88.)

GENERAL NOTES

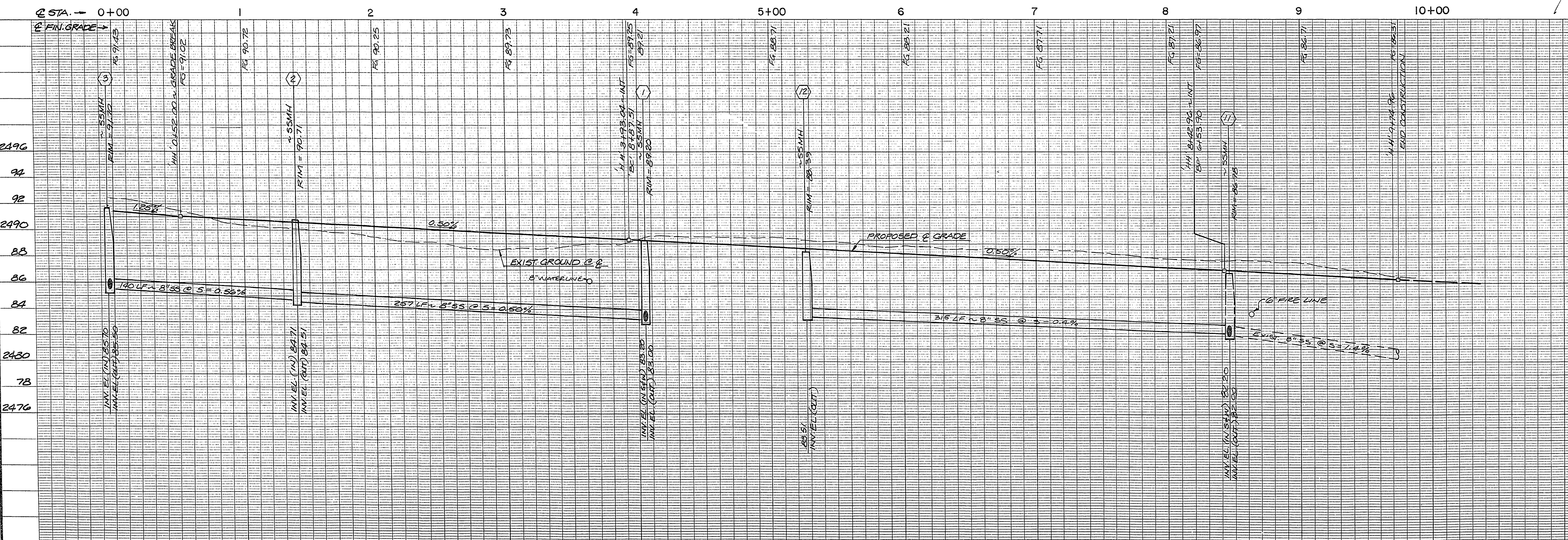
- ALL CONSTRUCTION AND MATERIALS SHALL BE IN ACCORDANCE WITH "UNIFORM STANDARD SPECIFICATIONS FOR PUBLIC WORKS CONSTRUCTION, OFF-SITE IMPROVEMENTS, CLARK COUNTY AREA, NEVADA", LATEST ISSUE; THE "UNIFORM STANDARD DRAWINGS FOR PUBLIC WORKS CONSTRUCTION, CLARK COUNTY AREA, NEVADA", LATEST ISSUE; ANY OTHER APPLICABLE APPROVED STANDARDS ISSUED BY THE CONTROLLING AGENCY; THE UNIFORM BUILDING CODE; AND ALL LOCAL CITY CODES AND ORDINANCES APPLICABLE.
- THE CONTRACTOR SHALL TAKE ALL PRECAUTIONARY MEASURES NECESSARY TO PROTECT EXISTING IMPROVEMENTS WHICH ARE TO REMAIN IN PLACE, FROM DAMAGE, AND ALL SUCH IMPROVEMENTS OR STRUCTURES DAMAGED BY THE CONTRACTOR'S OPERATIONS SHALL BE REPAIRED OR RECONSTRUCTED SATISFACTORY TO THE OWNER AT THE EXPENSE OF THE CONTRACTOR.
- ALL CONSTRUCTION SHALL BE AS SHOWN ON THESE PLANS. ANY ALTERATION SHALL HAVE THE PRIOR WRITTEN APPROVAL OF THE CITY ENGINEER.
- TYPE V CEMENT SHALL BE USED IN ALL OFF-SITE CONCRETE WORK. CONCRETE TO BE DESIGNED FOR A 5.5 SACK MIX WITH A MINIMUM WATER/CEMENT RATIO OF 0.48 (OR AS DESIGNATED BY THE SOILS ENGINEER). MIX DESIGN TO BE APPROVED BY THE QUALITY CONTROL DIVISION PRIOR TO USE ON THE PROJECT.
- PERMITS ARE REQUIRED FOR ANY WORK IN THE PUBLIC RIGHT OF WAY. THE CONTRACTOR SHALL SECURE ALL PERMITS AND INSPECTIONS REQUIRED FOR THIS CONSTRUCTION.
- THE CONTRACTOR SHALL PROVIDE ALL NECESSARY HORIZONTAL AND VERTICAL TRANSITIONS BETWEEN NEW CONSTRUCTION AND EXISTING SURFACES TO PROVIDE FOR PROPER DRAINAGE, INGRESS, AND EGRESS TO SAID CONSTRUCTION. EXTENT OF TRANSITIONS TO BE AS SHOWN ON PLANS, OR AS DESIGNATED IN THE FIELD BY A CITY INSPECTOR.
- A.C. PAVEMENT TO BE 1/2" ABOVE THE LIP OF ALL GUTTERS AND VALLEY GUTTERS AFTER COMPACTION. CURB & GUTTER WITH A GRADE OF LESS THAN FOUR TENTHS (0.4) OF ONE PERCENT SHALL BE CONSTRUCTED BY FORMING. EACH JOINT SHALL BE CHECKED FOR GRADE PRIOR TO CONSTRUCTION AND WATER TESTED AS SOON AS POSSIBLE AFTER CONSTRUCTION.

LEGEND

- PROPOSED A.C. PAVEMENT
- PROPOSED CONCRETE
- EXISTING CONTOUR LINES
- GRADE BREAK
- FLOWLINE ELEVATION
- ELEV. @ GRADE BREAK
- ELEV. @ FINISHED GRADE
- ELEV. @ HIGH PT./LOW PT.
- ELEV. @ TOP OF CURB
- SANITARY SEWER W/FLOW, M.H. AND M.H. NUMBER
- WATER LINE W/SIZE & VALVES
- HIGH PRESSURE SODIUM STREET LIGHT W/PVC CONDUIT



HUBER HEIGHTS DRIVE



PROFESSIONAL ENGINEER
 TODD J. KENNEDY
 CIVIL
 LICENSE NO. 7772
 6/8/89

SHEET 13 OF 14

ENGINEERING CORPORATION
 SUMMIT ENGINEERS AND SURVEYORS
 7700 S. LAS VEGAS BLVD., SUITE 200
 LAS VEGAS, NEVADA 89149 (702) 736-1881

SCALE: HORIZ. 1" = 40' VERT. 1" = 4'
 JOB NO. 7255 DRAWING NO.

DESIGNED BY: MUF STAFF
 DRAWN BY: TUK
 CHECKED BY: TUK
 DATE:

PLAN & PROFILE
 HUBER HEIGHTS DRIVE
 S.B.A. INDUSTRIES
 LAS VEGAS, CLARK COUNTY, NEVADA