

PLAN
 SURVISED BY: [Signature]
 DRAWN BY: [Signature]
 CHECKED BY: [Signature]
 DATE: 7-8-57
 NOTE BOOK NO. 1077-1005-12
 ALIGNED CHECKED BY: [Signature]
 NO. 1

PROFILE
 SURVISED BY: [Signature]
 DRAWN BY: [Signature]
 CHECKED BY: [Signature]
 DATE: 7-8-57
 NOTE BOOK NO. 1077-1005-12
 STRUCTURE INDICATIONS CHECKED BY: [Signature]
 NO. 1

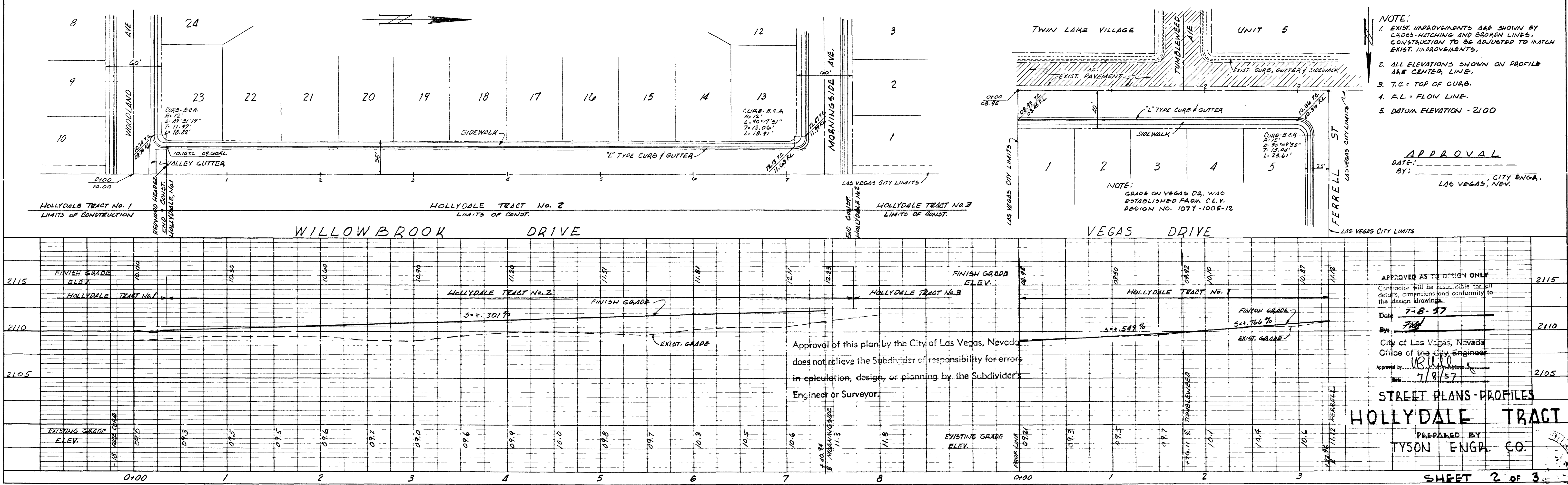
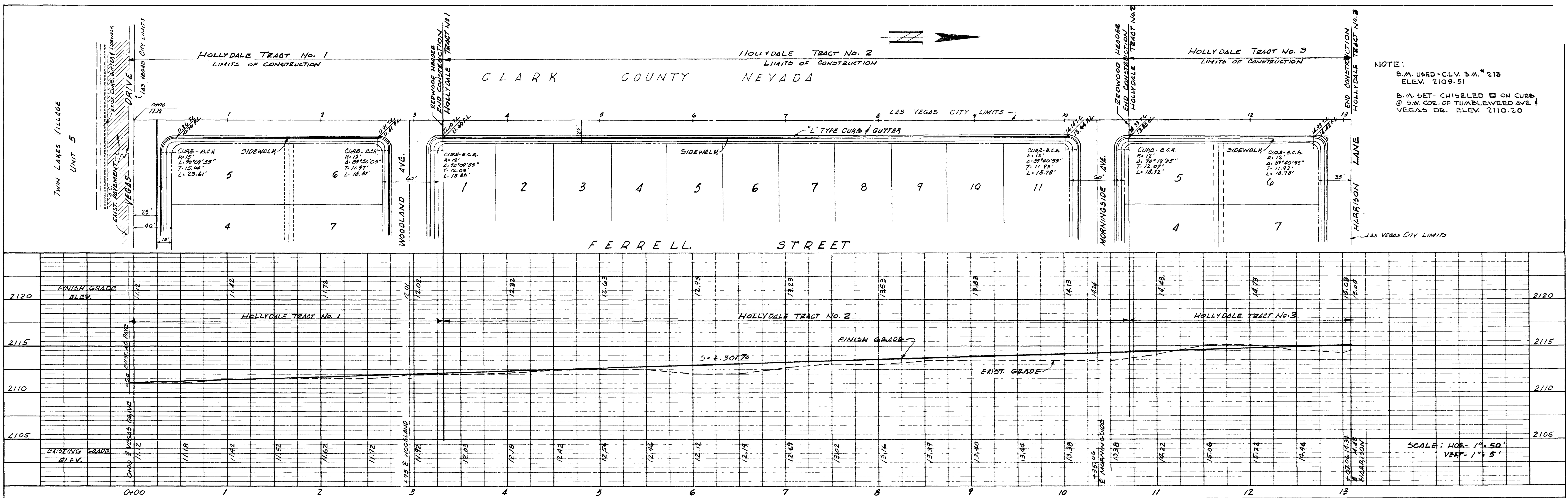


PLATE 2 PLAN PROFILE O P R E STANDARD
 THE FREDERICK POST CO., CHICAGO

CITY OF LAS VEGAS 4220
 ENGINEERING DEPT. 1077-1820-12
 167143

NOTE:
 B.M. USED - C.L.V. B.M. #213
 ELEV. 2109.51
 B.M. SET - CURBLED ON CURB
 @ S.W. COR. OF TUABLEWEE AVE. &
 VEGAS DR. ELEV. 2110.20

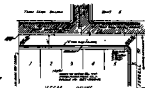
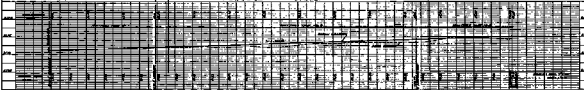
NOTE:
 1. EXIST. IMPROVEMENTS ARE SHOWN BY
 CROSS-HATCHING AND DASHED LINES.
 CONSTRUCTION TO BE ADJUSTED TO MATCH
 EXIST. IMPROVEMENTS.
 2. ALL ELEVATIONS SHOWN ON PROFILE
 ARE CENTER LINE.
 3. T.C. = TOP OF CURB.
 4. F.L. = FLOW LINE.
 5. DATUM ELEVATION - 2100

Approval of this plan by the City of Las Vegas, Nevada
 does not relieve the Subdivider of responsibility for errors
 in execution, design, or planning by the Subdivider's
 Engineer or Surveyor.

CLARK COUNTY NEVADA

SCALE: 1/8" = 1'-0"
NOT TO SCALE
SEE PLAN FOR
GENERAL NOTES

PEREGRINE STREET



- 1. ALL DIMENSIONS ARE FROM FACE UNLESS OTHERWISE NOTED
- 2. ALL WALLS ARE 12" THICK UNLESS OTHERWISE NOTED
- 3. ALL DOORS ARE 3'-0" WIDE UNLESS OTHERWISE NOTED
- 4. ALL WINDOWS ARE 6'-0" WIDE UNLESS OTHERWISE NOTED
- 5. ALL CEILING HEIGHTS ARE 8'-0" UNLESS OTHERWISE NOTED
- 6. ALL FLOOR FINISHES ARE TO BE DETERMINED BY THE ARCHITECT
- 7. ALL EXTERIOR FINISHES ARE TO BE DETERMINED BY THE ARCHITECT
- 8. ALL UTILITIES ARE TO BE LOCATED AND DEPTH NOTED BY THE ARCHITECT
- 9. ALL ERECTION SHALL BE IN ACCORDANCE WITH THE CITY OF LAS VEGAS BUILDING CODE
- 10. ALL ERECTION SHALL BE IN ACCORDANCE WITH THE CLARK COUNTY ZONING ORDINANCES

APPROVAL
DATE: 10/15/19

WILLOW BROOK DRIVE

VEGA DRIVE



HOLLYDALE TRAIL

CITY OF LAS VEGAS
ENGINEERING DEPT. 1019-DAMS