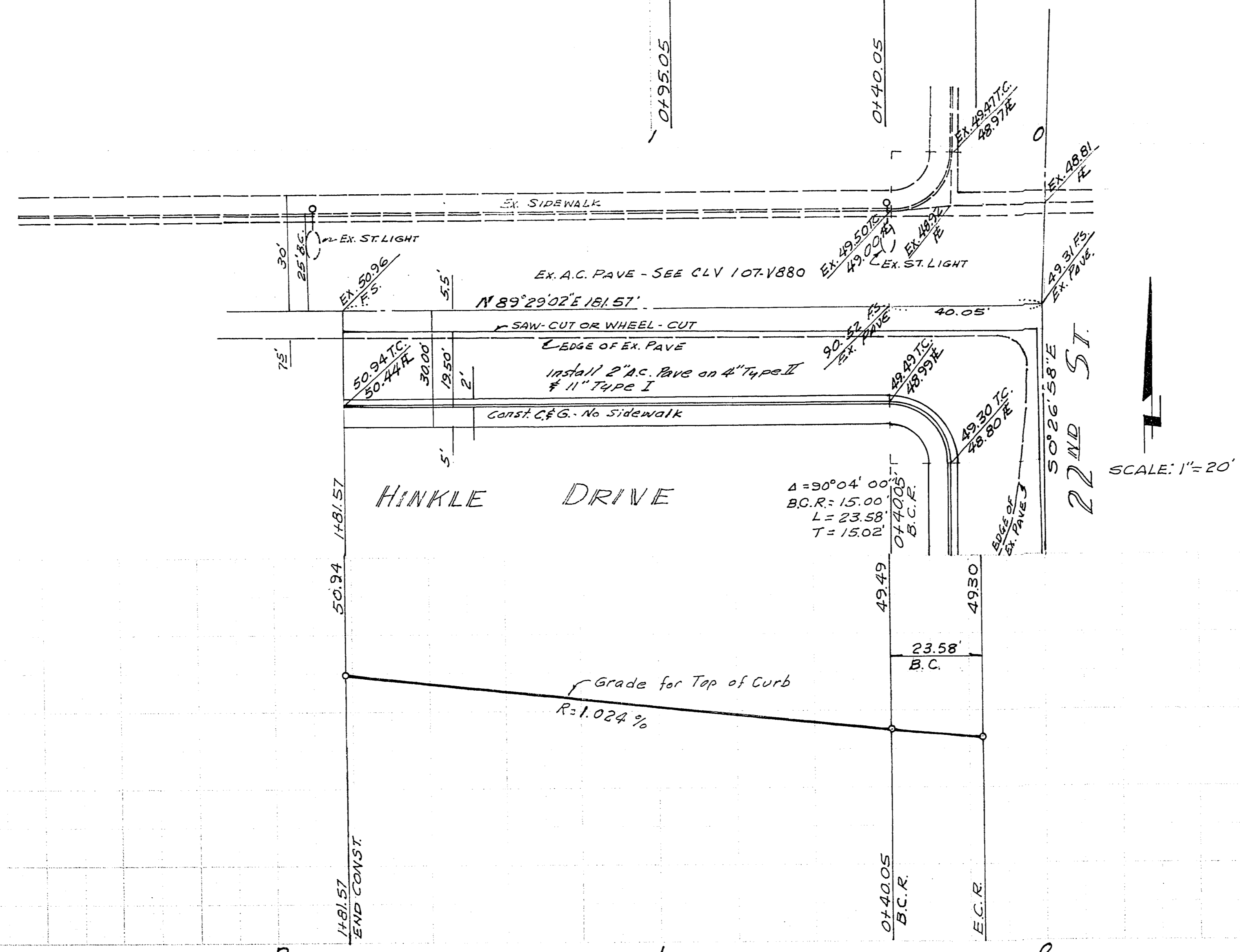
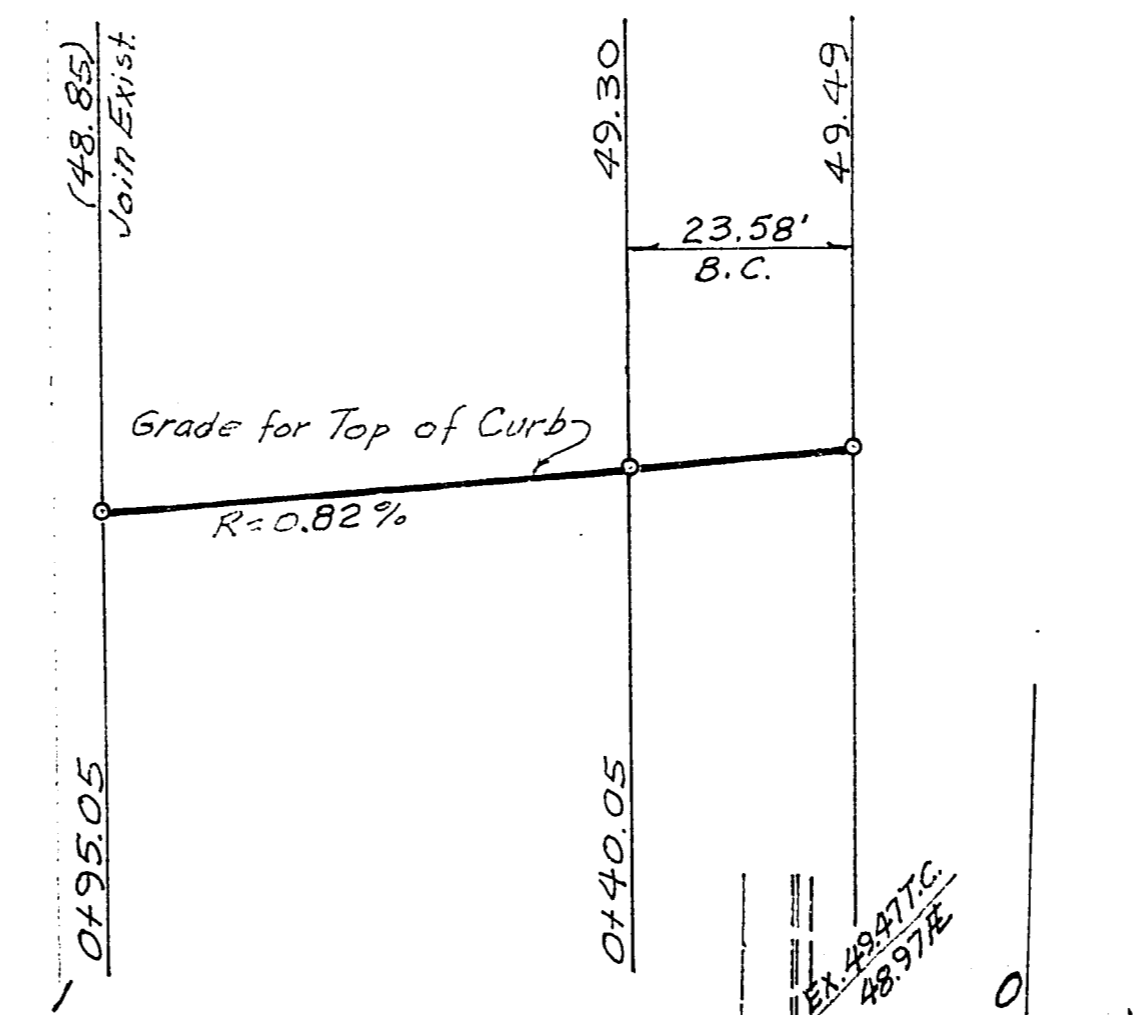


Bench Mark: El. 1853.78
 Bolt & Plate located on top
 of curb at S.E. corner of
 Owens & 21st St. CLVBM #06126 A 2

22ND ST.
 SCALE: 1"=20'

- Note:**
1. ALL WORK TO CONFORM TO CLARK COUNTY STANDARDS
 2. FOR CROSS SECTION OF HINKLE DR. & 22ND ST. SEE STD. DRWG. NO. 60
 3. FOR CURB & GUTTER CONSTRUCTION SEE STD. DRWG. NO. 340.1
 4. FOR 1/2 STREET CONSTRUCTION SEE STD. DRWG. NO. 20.0



SCALE: 1"=20'

Quantities

2" A.C. PAVE	633 S.Y.
24" STD. CURB & GUTTER	220 L.F.
Type I Gravel (11")	220 C.Y.
Type II Gravel (4")	80 C.Y.

APPROVALS

<u>J. D. Nelson</u> FIELD ENGINEER	3-4-74 DATE
<u>C. D. Peterson</u> OFFICE ENGINEER	3-4-74 DATE
<u>W. B. W.</u> DIRECTOR OF PUBLIC WORKS	3/5/74 DATE

SUBMITTED BY:
Jay M. Ressler 2/20/74
 JAY M. RASSLER, R.P.E.
 Nev. Civil Engr. #1624

PLAN & PROFILE OF
 HINKLE DR. & 22ND ST.
 For
 NICK BONEKOWSKI
 JAY M. RASSLER, R.P.E.
 LAS VEGAS, NEVADA