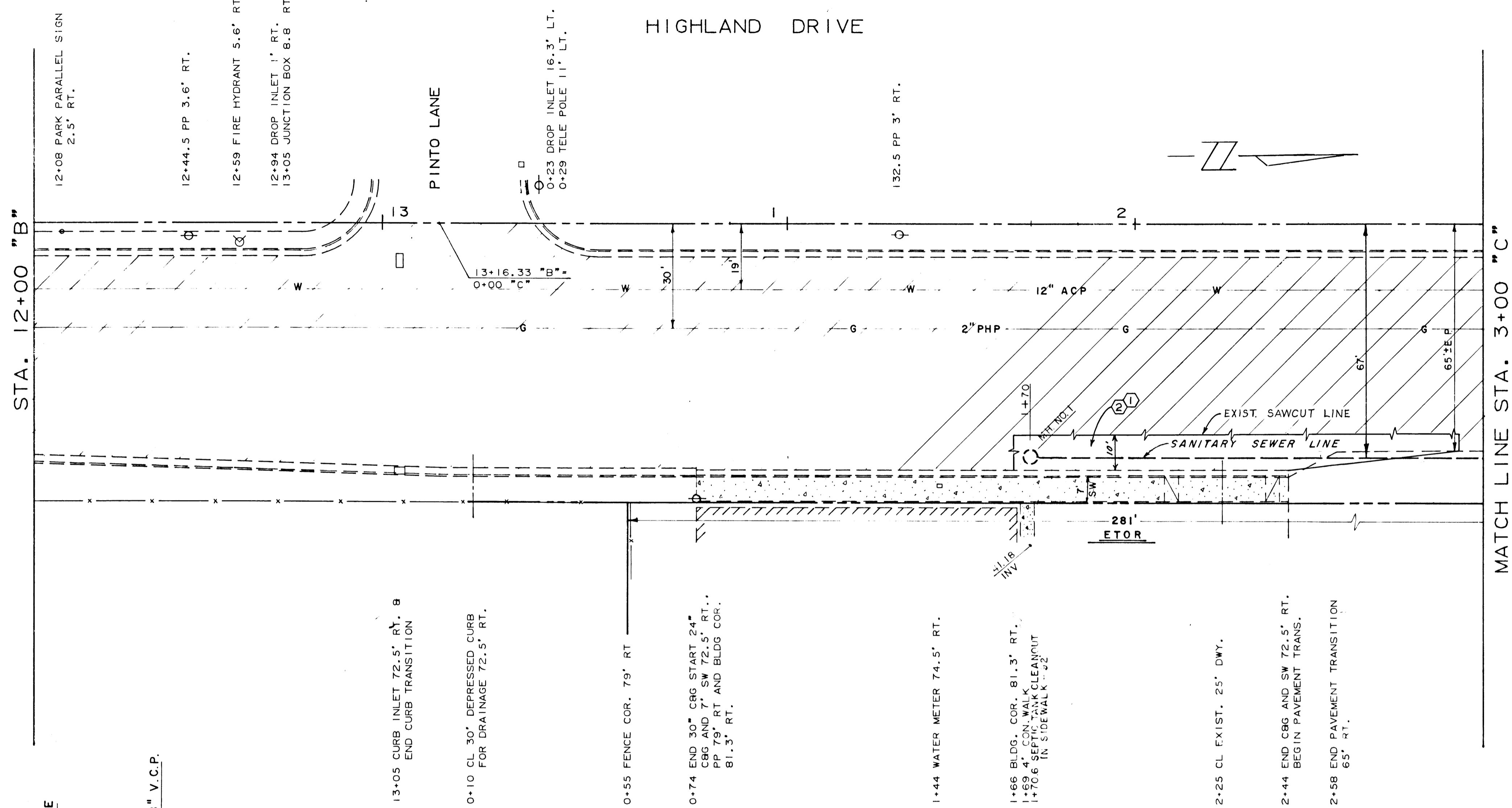
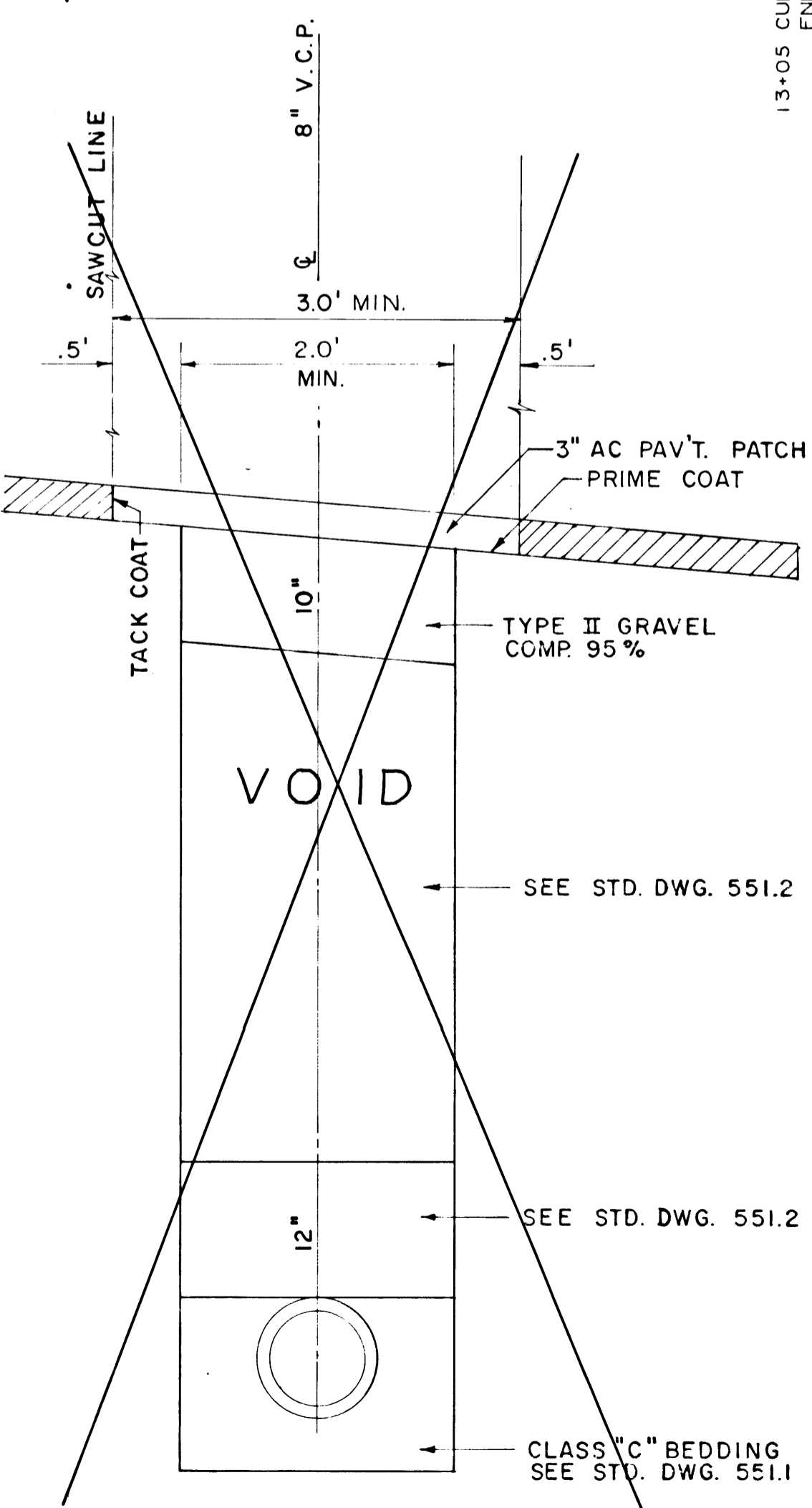
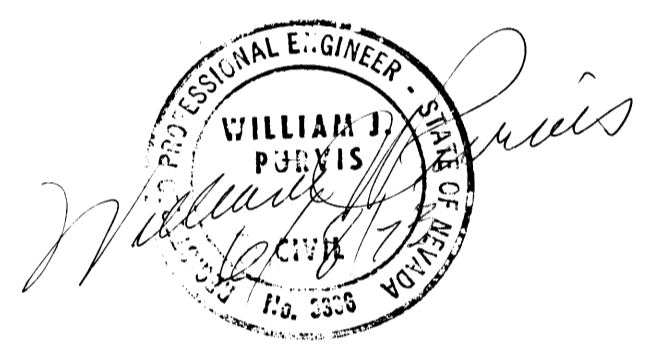


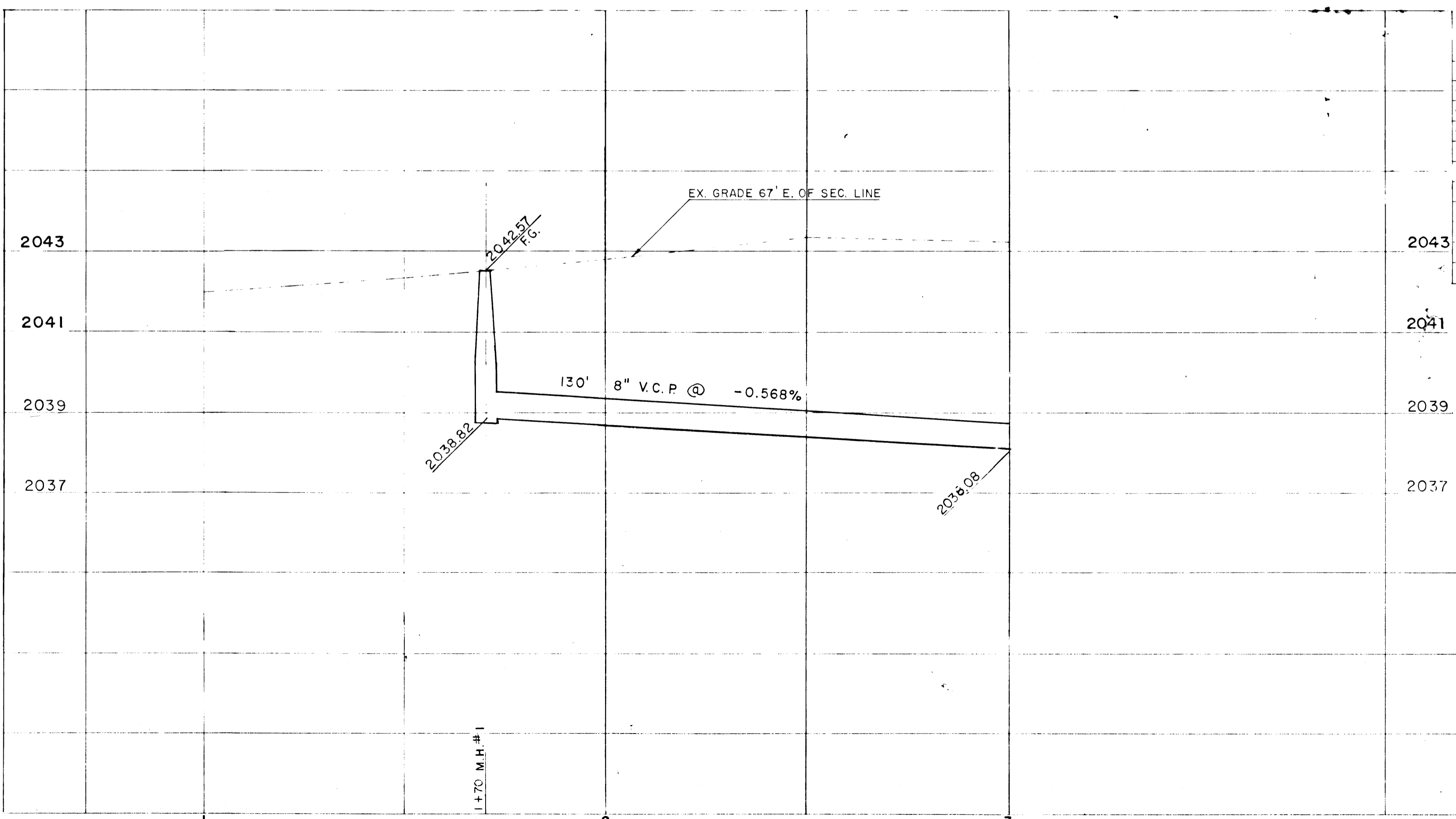
HIGHLAND DRIVE



TOTAL APPROX. QUANTITIES OF JOB			
CONST. NO.	ITEM NO.	DESCRIPTION	QUANTITY UNIT
1	201.1002	REMOVE AC PAVEMENT	3,741 SY
2	334.006	CONST PERMANENT AC PATCH -(3")	3,778 SY
3	302.200	TYPE II GRAVEL	50 TON



TYPICAL SECTION  
SCALE - 1"=1'



APPROX. QUANTITIES THIS SHEET			
CONST. NO.	ITEM NO.	DESCRIPTION	QUANTITY UNIT
1	201.1002	REMOVE AC PAVT.	116 SY
2	334.006	CONST. PERM. AC PATCH -3"	126 SY

CONTRACT  
DRAWING  
JUN 15 1973

NO.	DESCRIPTION	BY	DATE	APPROVAL
REVISIONS				

**CITY OF LAS VEGAS NEVADA**  
DEPARTMENT OF PUBLIC WORKS  
SERVICES DIVISION

HIGHLAND DRIVE PERM. AC. PATCH  
AND ALTA DRIVE TO STATEHOOD ST.

W.D. NO. 4079	FBK. NO. 71-1X	DATE	DRAWING NO.
SC (H) 1"=20'	SC (V) 1"=2'		107-V903
DES. D. MCGONEGLE	DR. CALCOMP 618	MSG. JSH.	FILE NO.
APPROVED BY DIRECTOR PUBLIC WORKS	U.B. Williams	MAY 73	

SHEET 2 OF 10