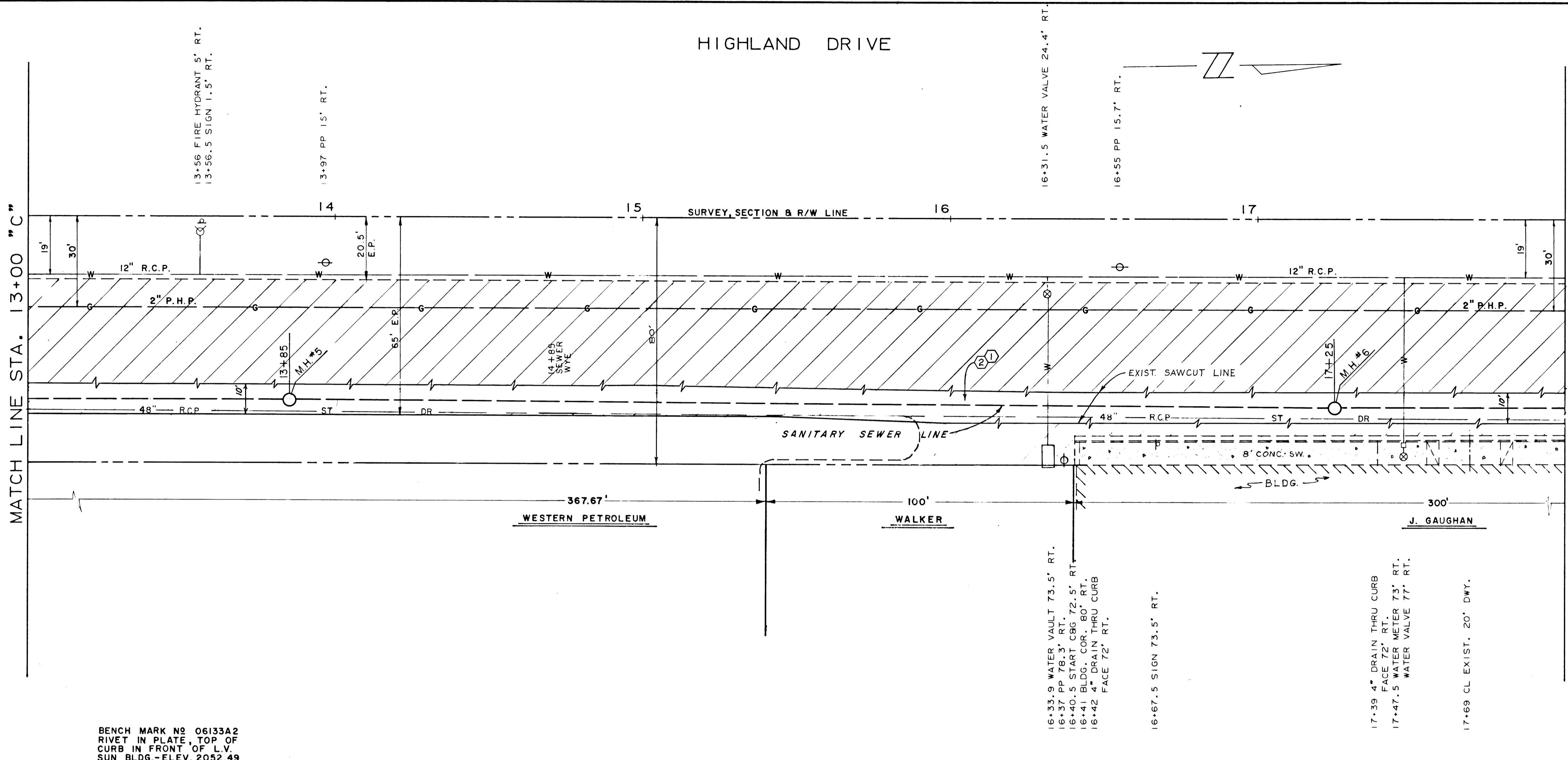


HIGHLAND DRIVE

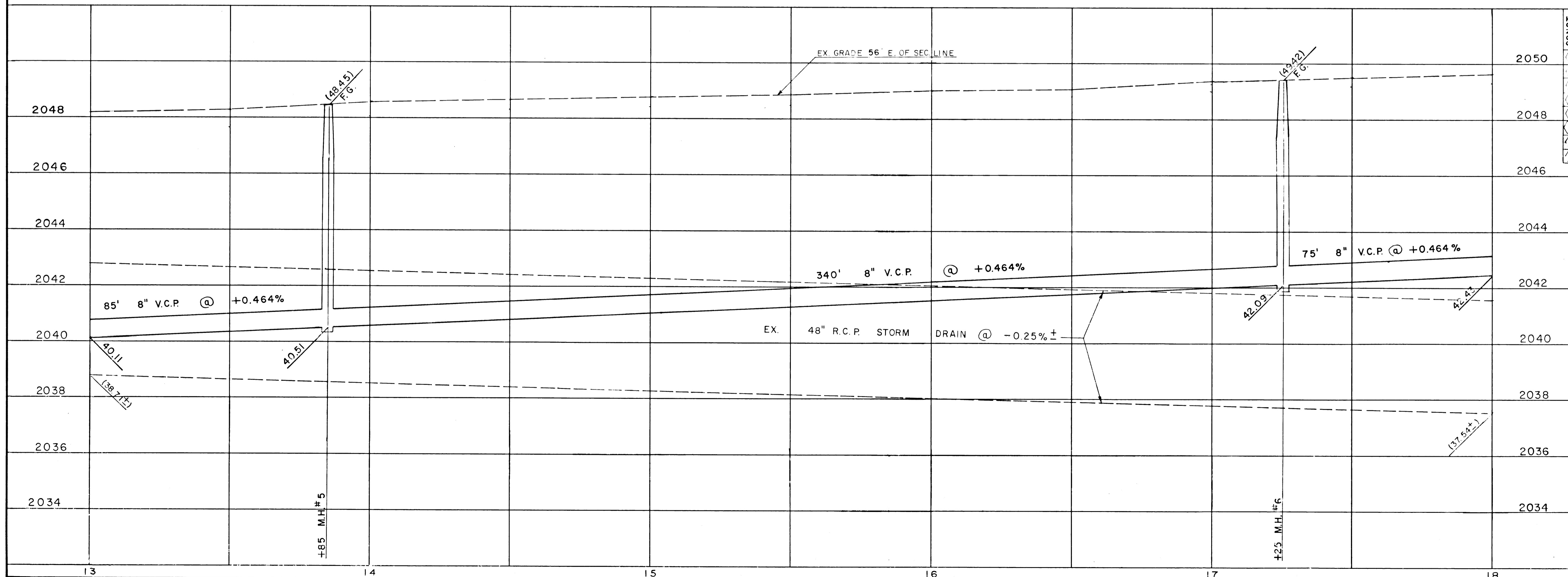
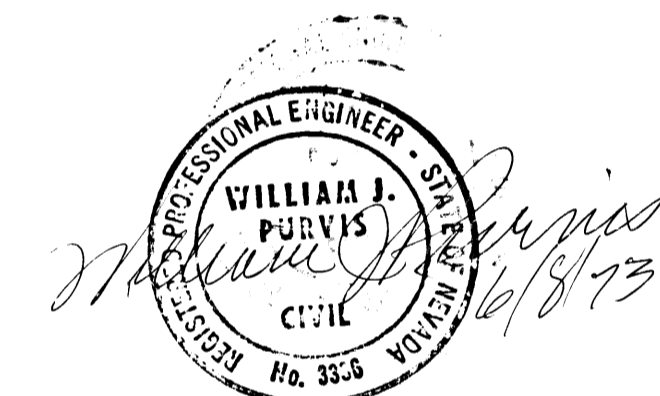


MATCH LINE STA. 13+00 "C"

MATCH LINE STA. 18+00 "C"



BENCH MARK NO. 06133A2  
RIVET IN PLATE, TOP OF  
CURB IN FRONT OF L.V.  
SUN BLDG. - ELEV. 2052.49



APPROX QUANTITIES THIS SHEET			
CONST. NO.	ITEM NO.	DESCRIPTION	QUANTITY UNIT
1	2011002	REMOVE A.C. PAVT.	583 SY
2	334006	CONST. PERM. A.C. PATCH - 3"	588 SY
3			
4			

**CONTRACT DRAWING**  
JUN 15 1973

NO. DESCRIPTION BY DATE APPROVAL

REVISIONS

**CITY OF LAS VEGAS NEVADA**  
DEPARTMENT OF PUBLIC WORKS  
SERVICES DIVISION

**HIGHLAND DRIVE PERM. A.C. PATCH  
AND ALTA DRIVE TO STATEHOOD ST.**

W.O. NO. 4079	F.B.K. NO. 71-1X	DATE	DRAWING NO.
SC (H) 1" = 20'	SC (V) 1" = 2'		107-V903
DES. D. Mc GONIGLE	MSG. JSH	MAY 73	FILE NO.
DR. CALCOMP 618			

APPROVED: DIRECTOR OF PUBLIC WORKS  
*W.S. Kelly* 6/14/73

SHEET 5 OF 10