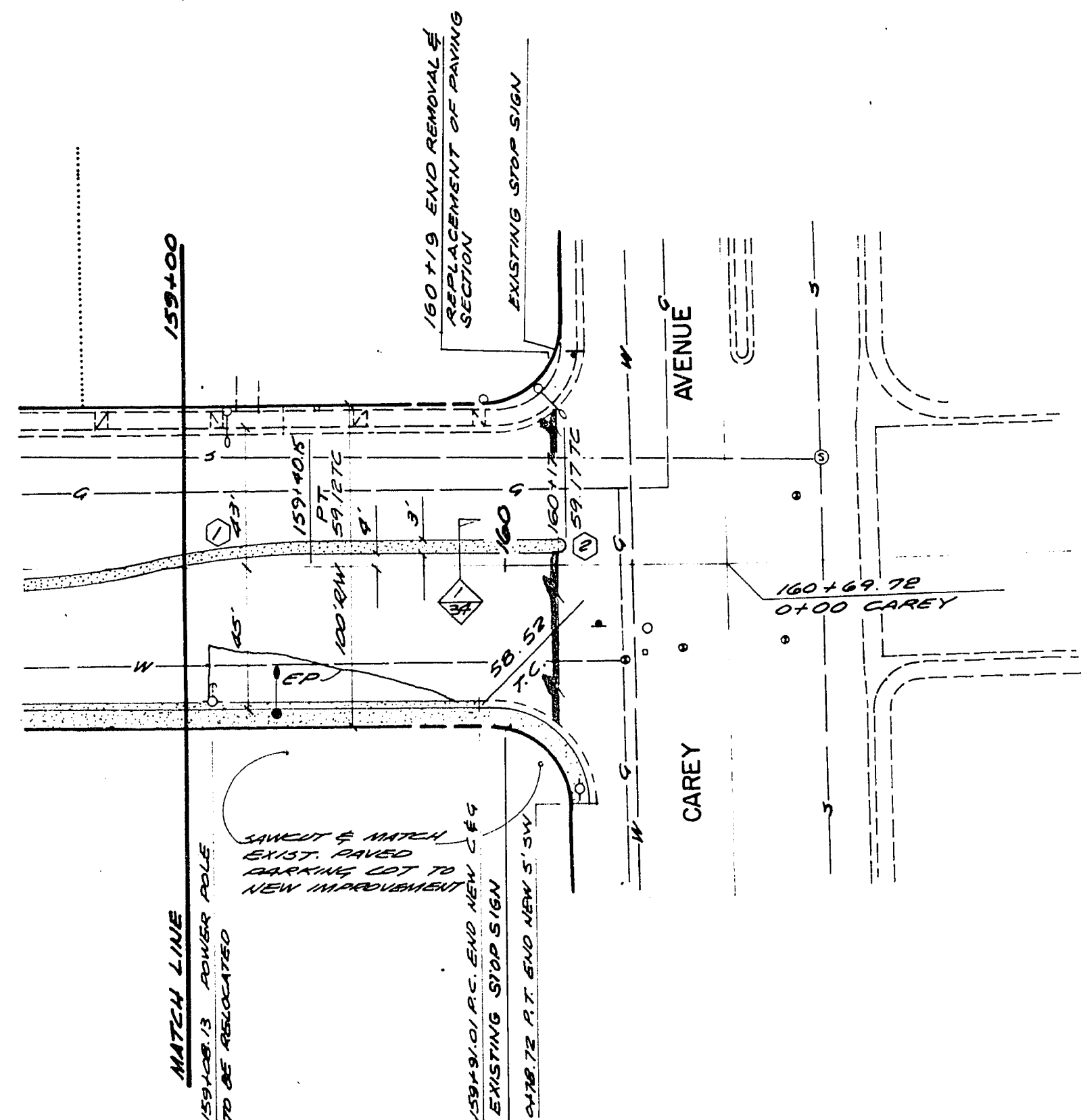


NO	Δ	R	T	L
1	12°02'26"	250.00'	26.37'	52.54'
2	100°00'20"	1.50'	00	4.71'

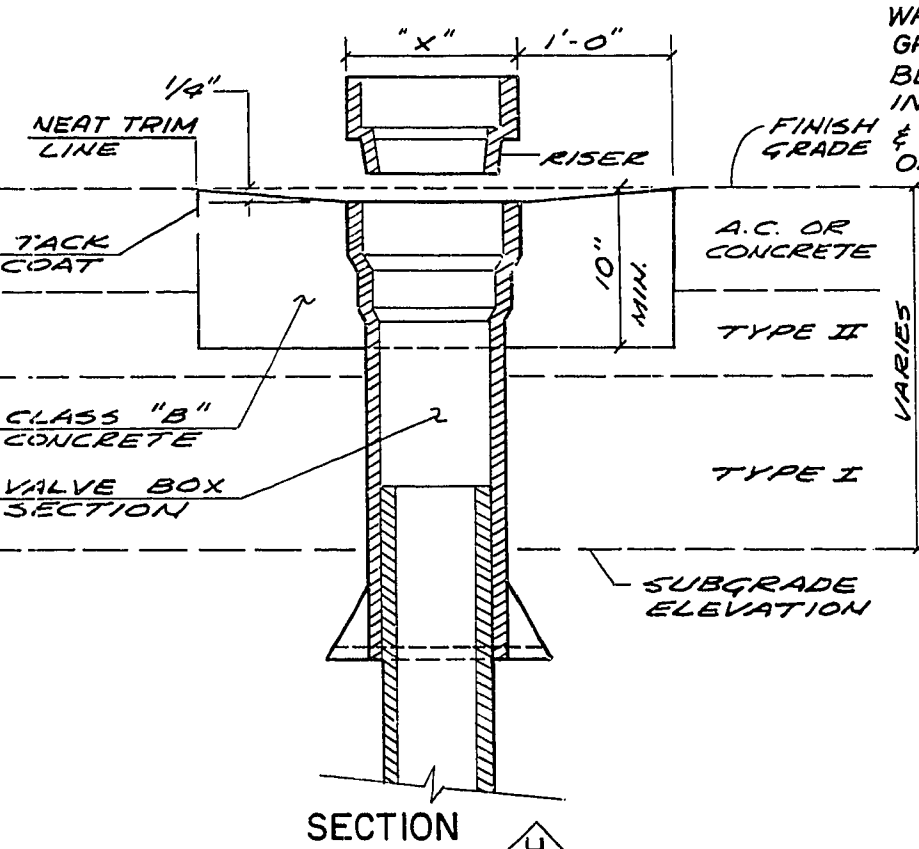
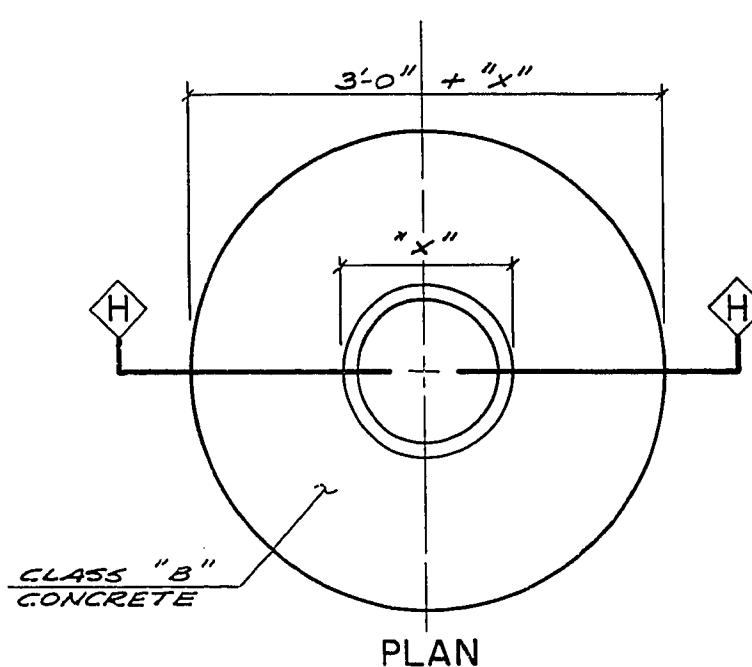
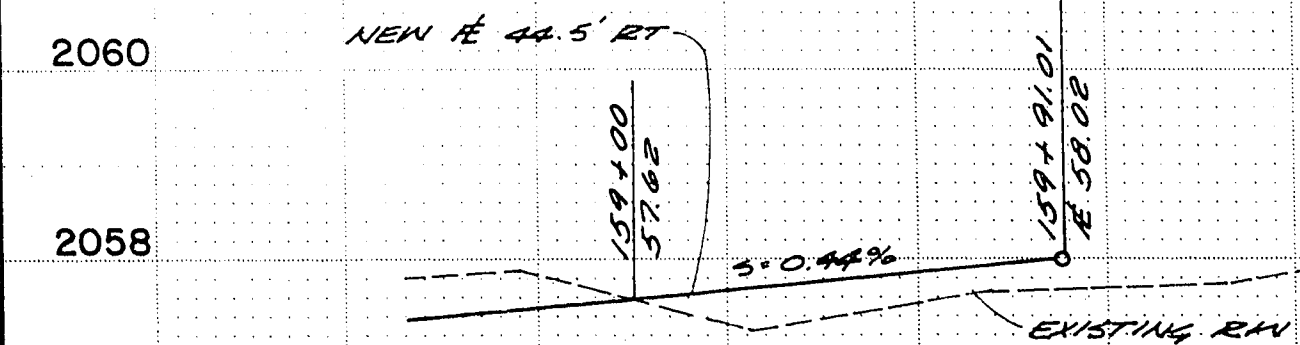
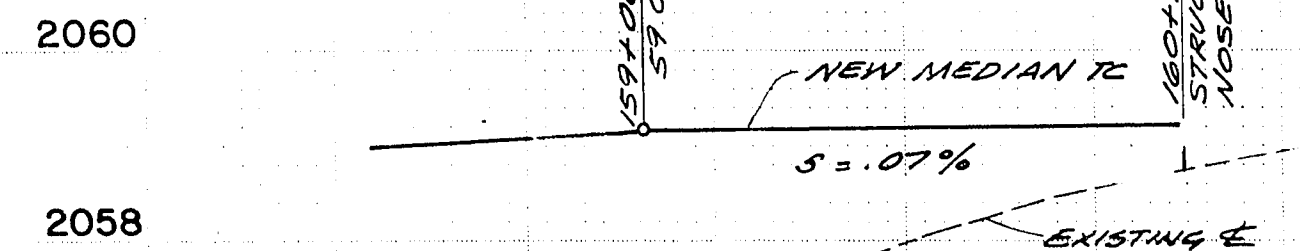
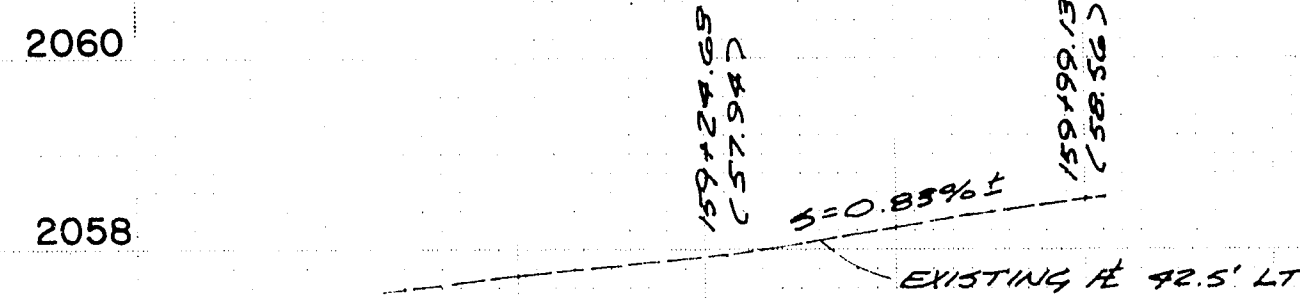
R.L. & BETTYE GWENDOLYN
PORTSON
1A - 39 - 11

1" = 40' HORIZ. 1" = 2' VERT.

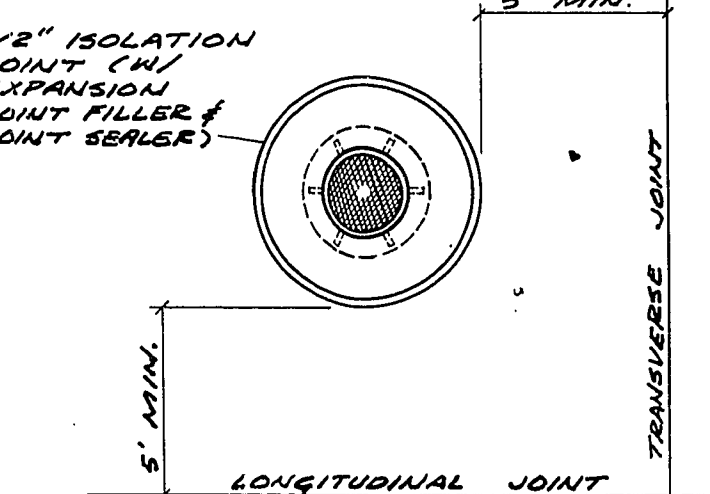
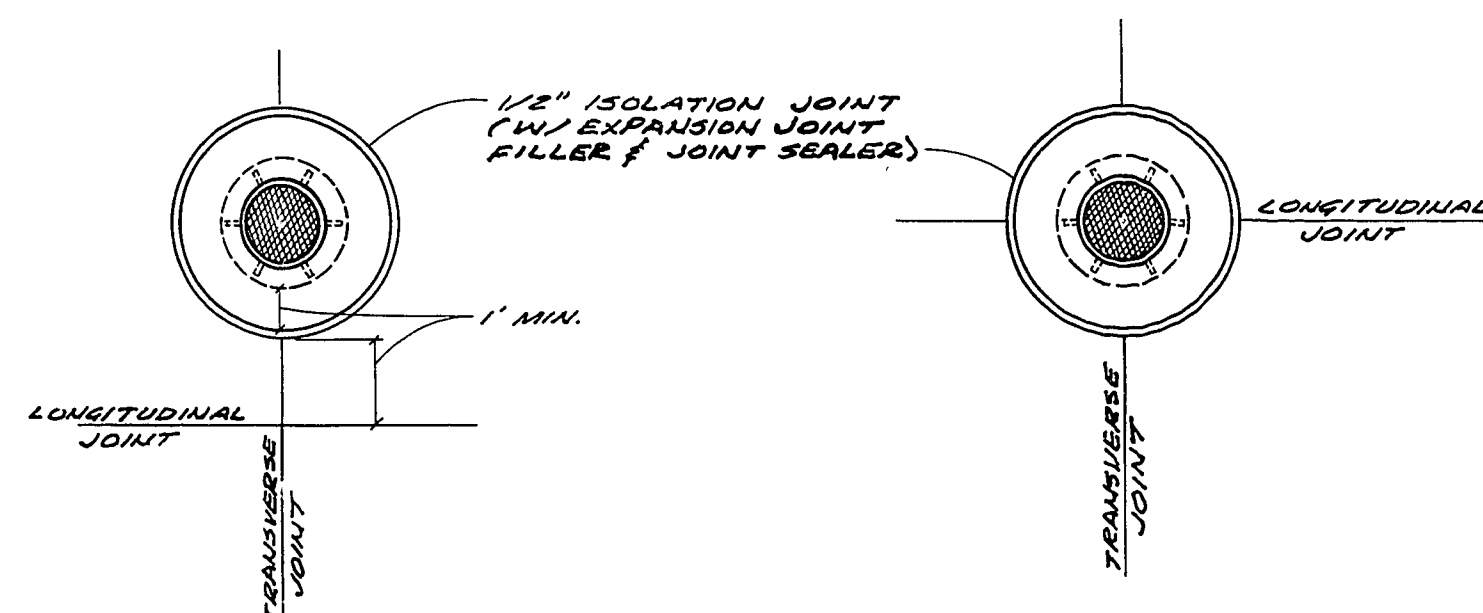


WILLIAM A. WEGGIE JR. ET AL
1B - 011 - 01

159+00 160+00

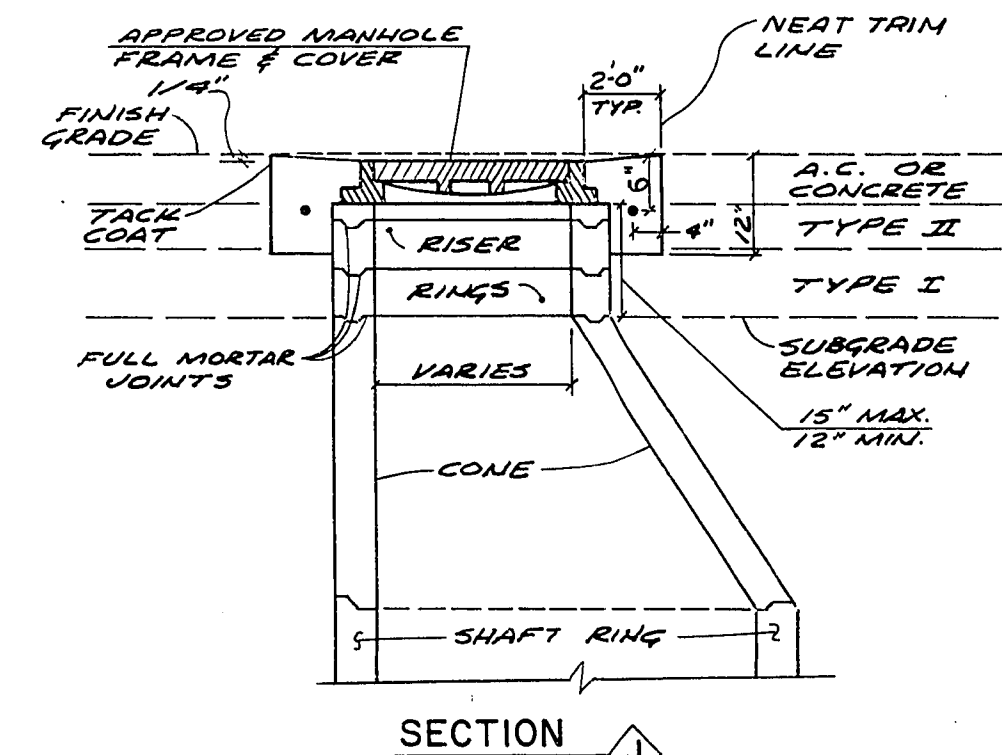
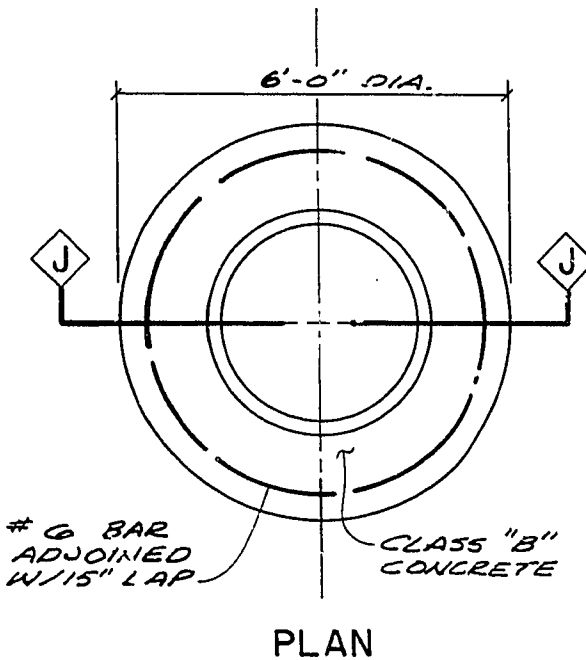


1 VALVE CONCRETE COLLAR DETAIL
NO SCALE

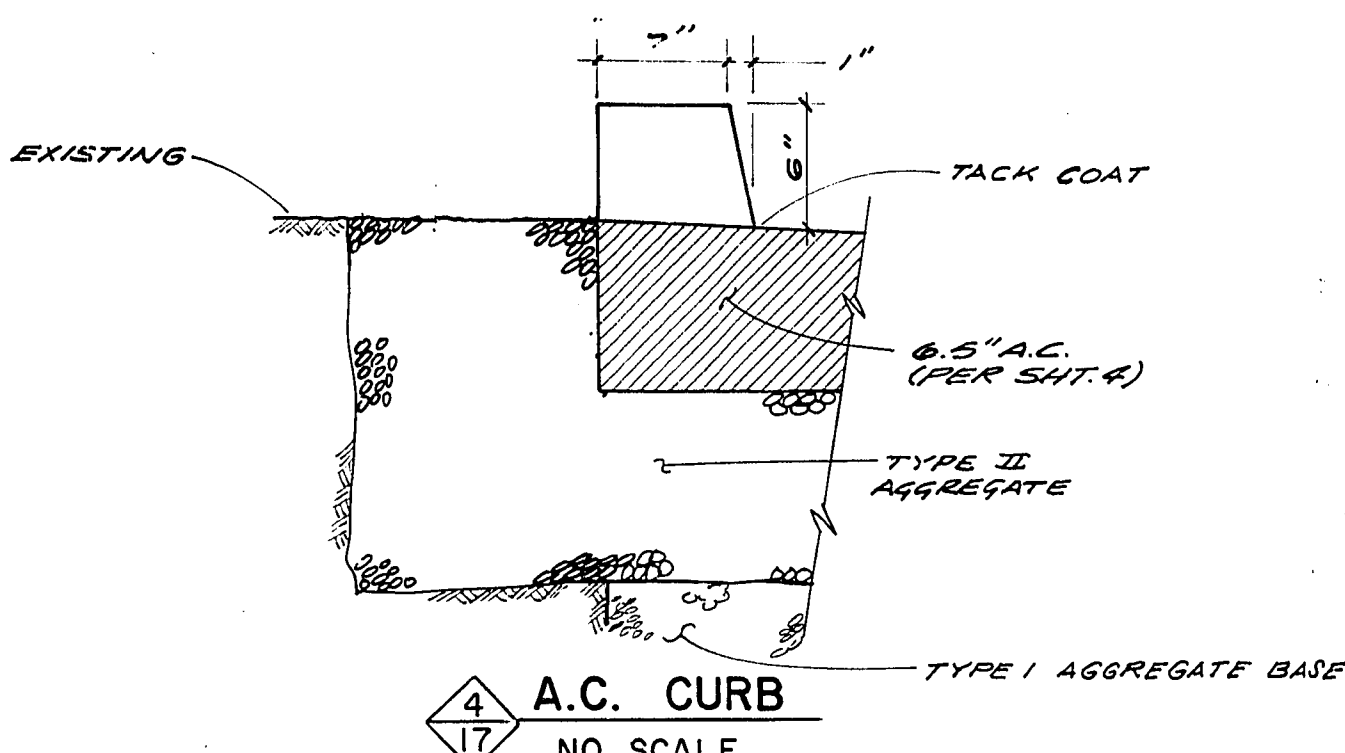


3 JOINT DETAIL AT VALVE AND MANHOLE COLLARS
NO SCALE

NOTE:
EXISTING VALVE BOX SHALL BE LOWERED TO SUBGRADE ELEV. RAISE OR LOWER TOP SECTION AND / OR INSTALL RISERS AS NECESSARY.
VALVE BOX SHALL BE PLATED AND RAISED TO 1/4" BELOW FINISH GRADE AFTER THE ASPHALTIC PAVEMENT HAS BEEN PLACED.
WHEN LOCATED IN CONCRETE PAVING CONCRETE COLLAR SHALL CONFORM TO FINISH GRADE LINE, AND THE CONCRETE PAVEMENT SPECIFICATIONS. THE COLLAR SHALL BE PLACED PRIOR TO THE PLACEMENT OF CONCRETE PAVEMENT.
WHEN LOCATED IN A.C. PAVING TO BE OPEN GRADED THE CLASS 'B' CONCRETE SHOWN SHALL BE REPLACED WITH A.C. HOT MIX FOR THE INITIAL VALVE ADJUSTMENT (AFTER A.C. PAVING & PRIOR TO OPEN GRADE) UPON COMPLETION OF OPEN GRADING THE CONCRETE COLLAR SHALL BE INSTALLED IN CONFORMANCE WITH THIS DETAIL EXCEPT THAT THE TOP OF CONCRETE SHALL BE 1/4" BELOW THE FINISH GRADE.



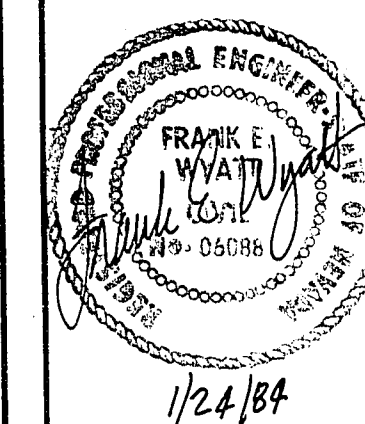
2 MANHOLE CONCRETE COLLAR DETAIL
NO SCALE



4 A.C. CURB
NO SCALE

NOTE:
JOINTS MAY BE SKEWED OR RELOCATED WITH THE ENGINEERS APPROVAL TO MEET THE REQUIREMENTS OF THESE DETAILS.
JOINTS INTERSECTING ISOLATION JOINT SHALL BE RADIAL TO THE CIRCLE.
THIS DETAIL FOR CONCRETE ALTERATE INTERSECTIONS ONLY

REVISIONS		
NO.	DESCRIPTION/DATE	BY



SPARKS, NEVADA
LAS VEGAS, NEVADA
SEATTLE, WASHINGTON
INCORPORATED
S&A
ENGINEERS/PLANNERS

CITY OF LAS VEGAS
HIGHLAND DRIVE
CHARLESTON BOULEVARD TO CAREY AVENUE
PLAN AND PROFILE
159+00 TO 160+69.72

JOB NO. 2-0241-004-B21
DESIGNED DFP
DRAWN TAM & PBW
COMP.
CHECKED
DATE DECEMBER, 1982