

BONANZA VILLAGE TRACT
BOOK 2, PG. 69 OF PLATS
1" = 40' HORIZ. 1" = 2' VERT.

NO	Δ	R	T	L
1	14°01'24"	58.25'	69.03'	137.37'
2	180°00'00"	1.50'	00'	1.50'
3	5°57'02"	1081.18'	50.10'	100.12'
4	84°20'30"	65.00'	58.88'	95.39'
5	90°02'08"	20.00'	20.01'	31.43'
6	90°09'36"	25.00'	25.07'	39.54'
7	84°20'28"	20.00'	18.12'	29.54'
8	5°57'02"	984.18'	48.24'	76.44'
9	5°57'02"	1018.18'	49.96'	99.82'
10	14°01'24"	558.25'	68.66'	136.63'

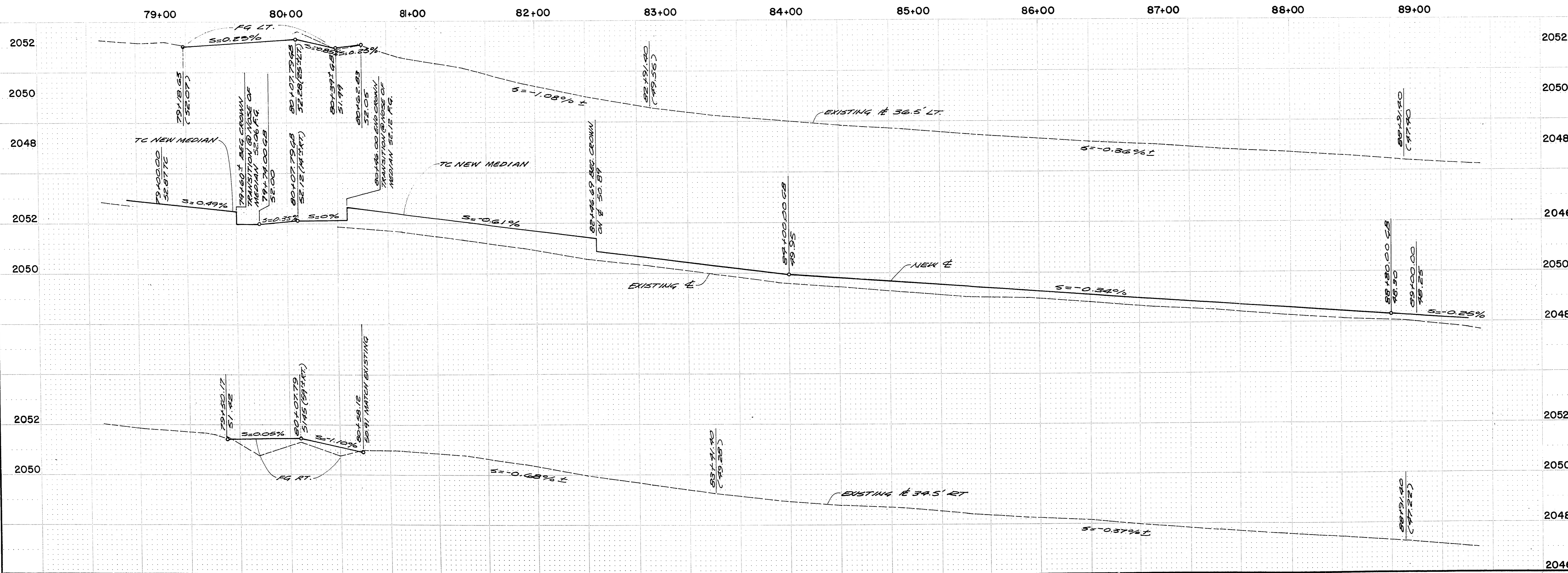
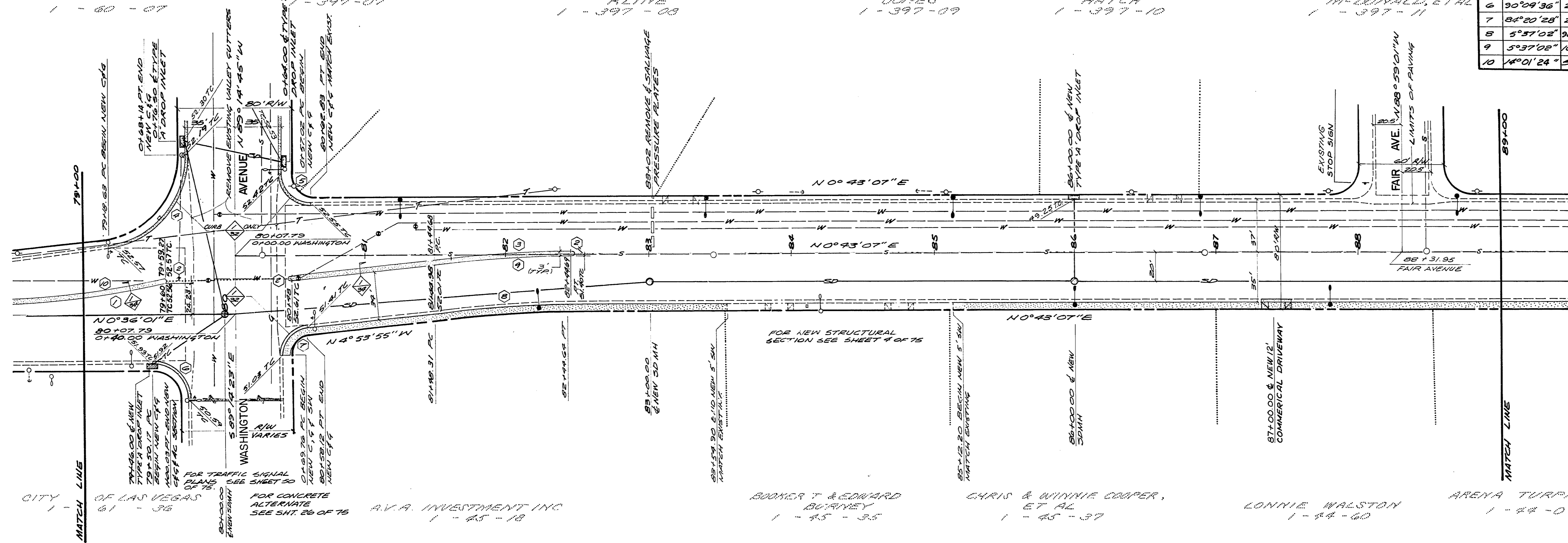
FOR CONTINUATION
SEE SHEET 22 OF 15
SAWENAY SUPER SERV.
STATIONS INC.
1 - 80 - 07

LOT 8
GEORGE B & MINNIE L.
KLINE
1 - 397 - 08

LOT 9
GERALD R. & LILLIAN G.
WOLVES
1 - 397 - 09

LOT 10
DOYLE & SHIRLEY
HATCH
1 - 397 - 10

LOT 11
HOWARD H. & MARIAN
MCDONALD, ET AL
1 - 397 - 11



REVISIONS
NO. DESCRIPTION/DATE BY

PROFESSIONAL ENGINEER
STATE OF NEVADA
1/24/84

SPARKS, NEVADA
LAS VEGAS, NEVADA
SEATTLE, WASHINGTON
INCORPORATED
S&A
ENGINEERS/PLANNERS

CITY OF LAS VEGAS
HIGHLAND DRIVE
CHARLESTON BOULEVARD TO CAREY AVENUE
PLAN AND PROFILE
79+00 TO 89+00

JOB NO. 2-0241-004-821
DESIGNED DFP
DRAWN PW & SLE
COMP.
CHECKED
DATE DECEMBER, 1982