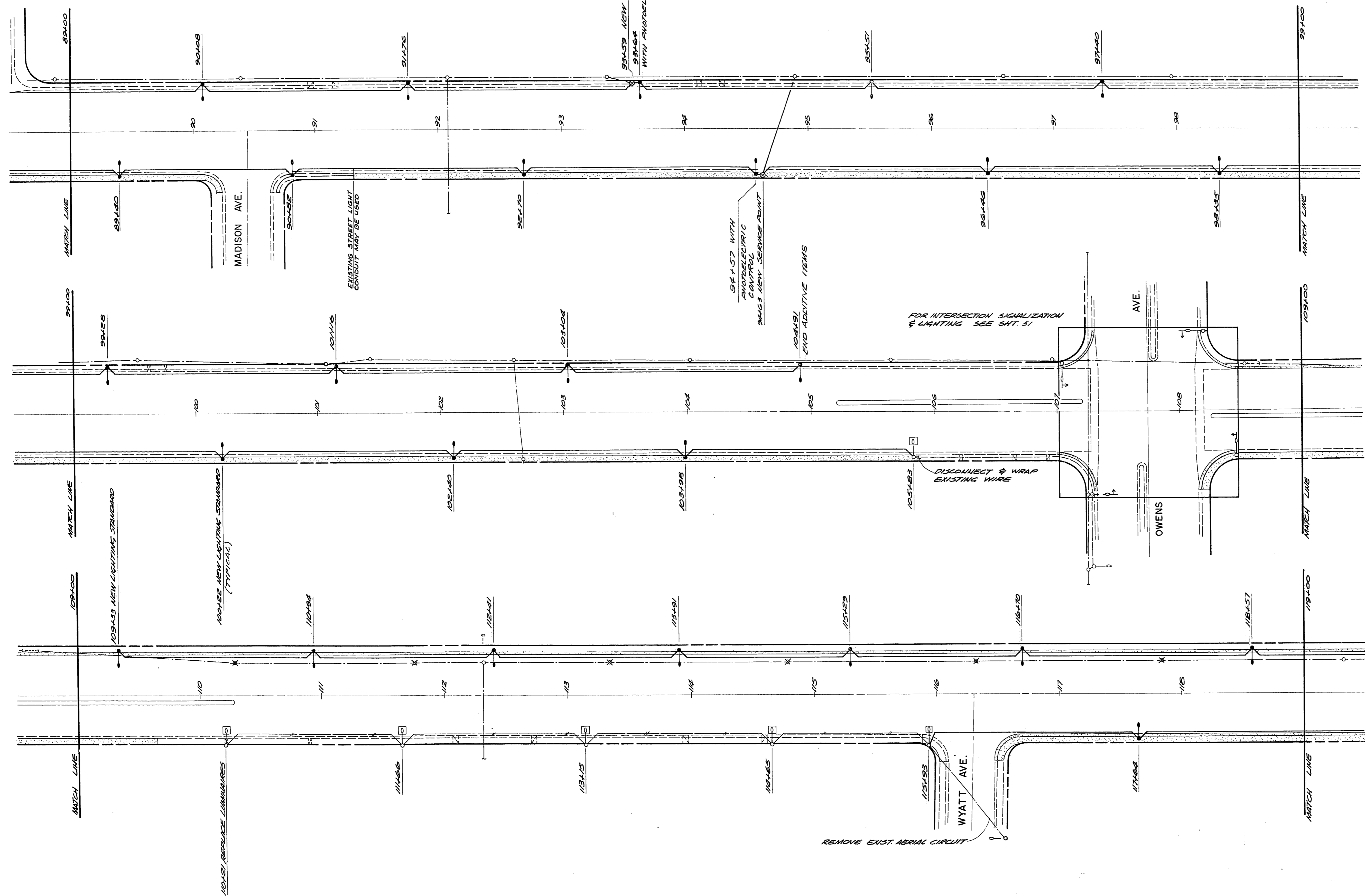
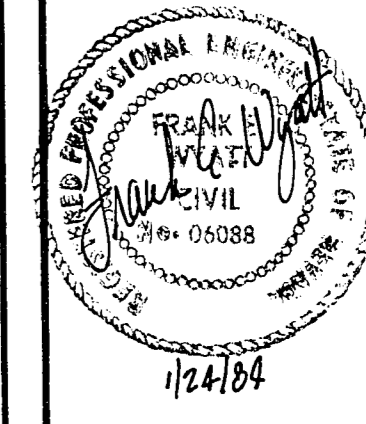




NOTE: SEE SHT. 48 FOR STREET LIGHT NOTES.



REVISIONS			
NO.	DESCRIPTION/DATE	BY	



SPARKS, NEVADA
 LAS VEGAS, NEVADA
 SEATTLE, WASHINGTON
S&A
 ENGINEERS/PLANNERS

CITY OF LAS VEGAS
 HIGHLAND DRIVE
 CHARLESTON BOULEVARD TO CAREY AVENUE
 STREET LIGHTING
 89+00 TO 119+00

JOB NO. 2-0241-004-821
DESIGNED DFP
DRAWN TAM
COMP.
CHECKED
DATE DECEMBER, 1982

62

62 OF 75 SHEETS

19.4-207 107-V850 A