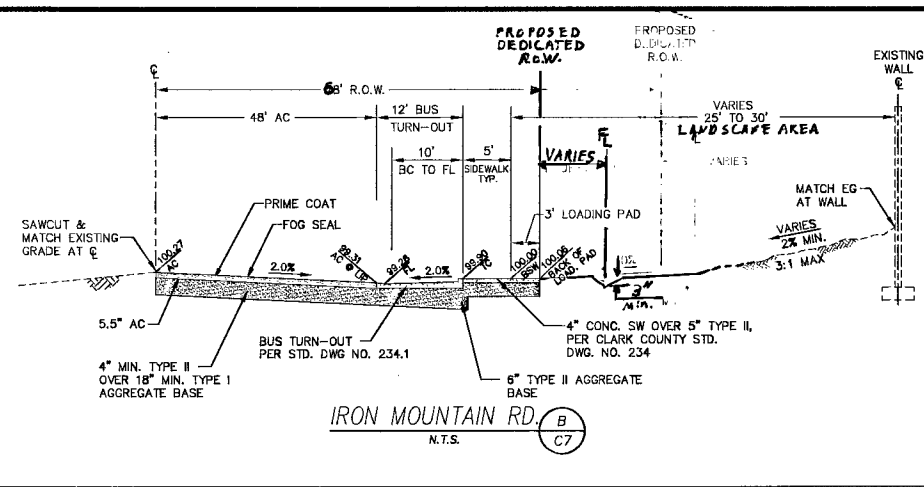
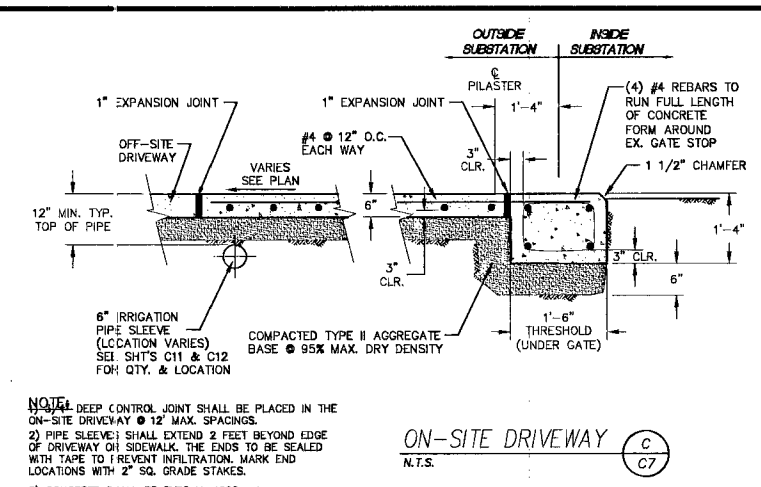


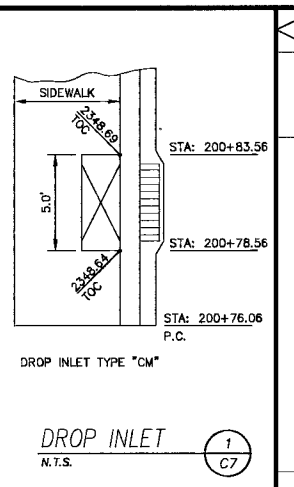
IRON MOUNTAIN RD. (A) N.T.S. (C7)



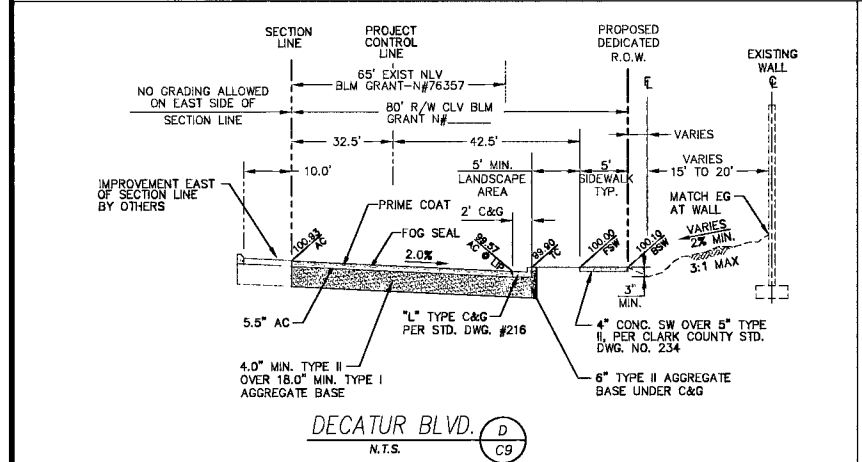
IRON MOUNTAIN RD. (B) N.T.S. (C7)



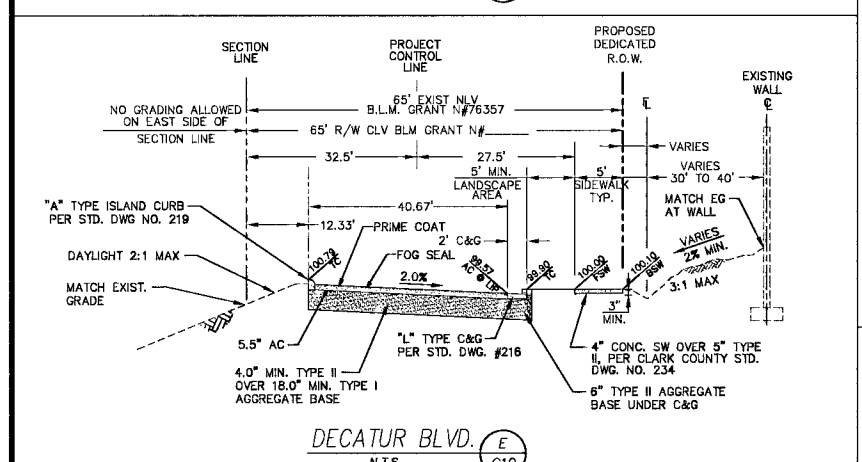
ON-SITE DRIVEWAY (C) N.T.S. (C7)



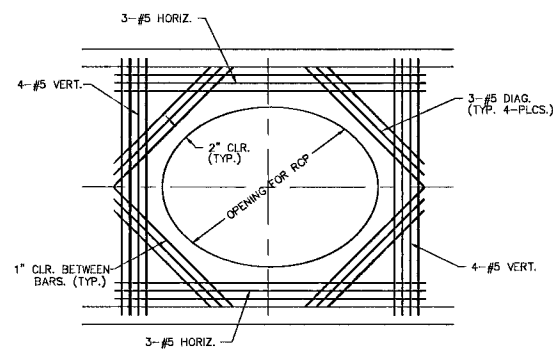
DROP INLET (1) N.T.S. (C7)



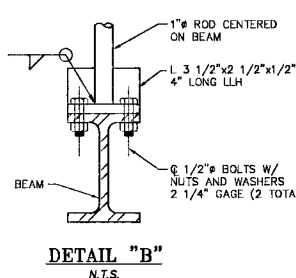
DECATUR BLVD. (D) N.T.S. (C9)



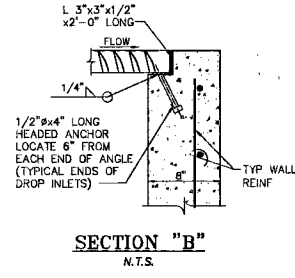
DECATUR BLVD. (E) N.T.S. (C10)



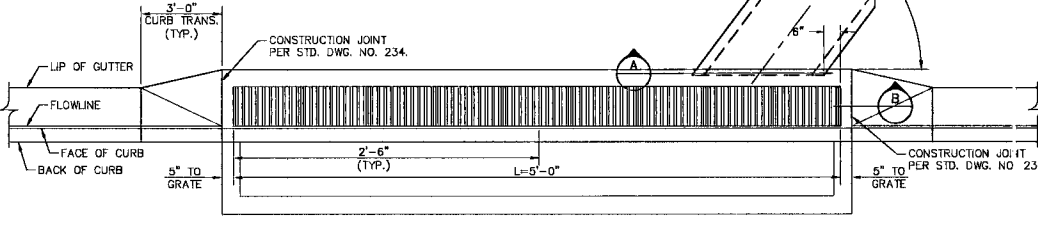
SECTION 'A' N.T.S.



DETAIL 'B' N.T.S.

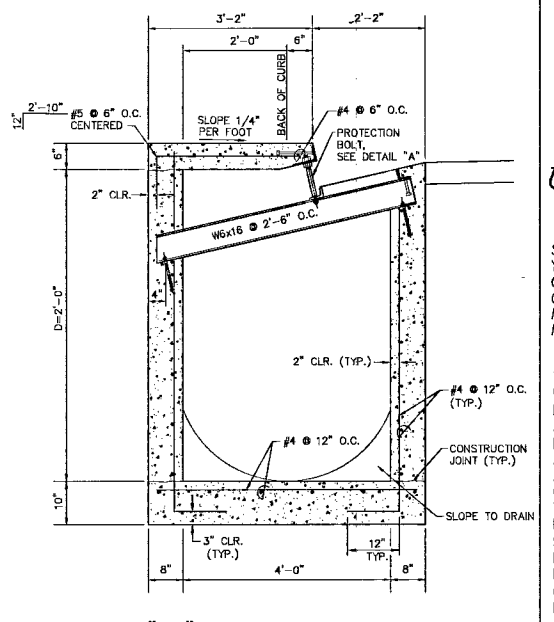


SECTION 'B' N.T.S.



DROP INLET LAYOUT PLAN N.T.S.

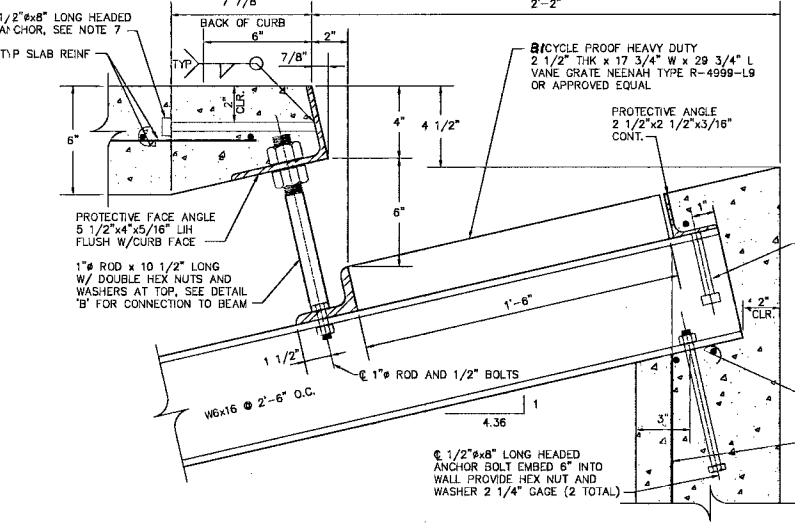
DETAIL 3



TYPE 'CM' DROP INLET SECTION N.T.S.

**GEOTECHNICAL NOTE:**  
 ALL GRADING, INCLUDING EXCAVATION, EMBANKMENT AND SUBGRADE PREPARATION FOR THIS PROJECT SHALL FOLLOW THE GEOTECHNICAL INVESTIGATION REPORT RECOMMENDATIONS BY KLEINFELDER DATED JULY 17, 1997 PROJECT #31-216462, UPDATED DECEMBER 15, 2006 PROJECT #26682.

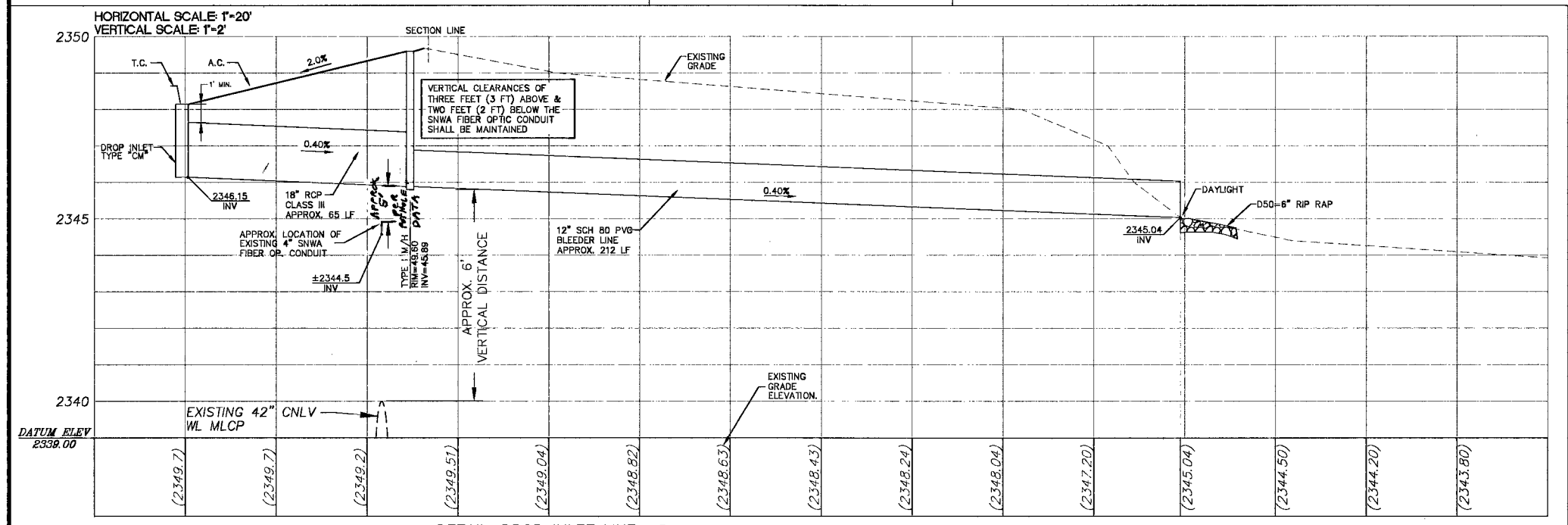
TYPE 'CM' DROP INLET (3) N.T.S. (C12)



NOTES:

1. ALL EXPOSED METALS SHALL BE HOT DIP GALVANIZED AFTER FABRICATION.
2. PROVIDE 1/2" (MIN.) CLEARANCE ALL AROUND THE STEEL BEAM. DRY PACK AFTER INSTALLATION.
3. WHEN REQUIRED BY LENGTH OF OPENING, PLATE ANGLE MAY BE DELIVERED IN SECTIONS AND BUTT WELDED IN PLACE.
4. ALL GALVANIZING DAMAGED BY WELDING SHALL RECEIVE TWO COATS OF GALVALLOY OR EQUAL.
5. ANGLE ANCHORS SHALL BE EMBEDDED MIDPOINT IN EACH ENDWALL AND EVENLY SPACED. (MAXIMUM SPACING OF 2')

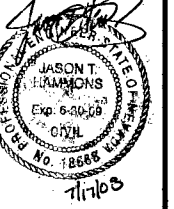
PROTECTIVE FACE & ROD - DETAIL 'A' N.T.S.



DETAIL-DROP INLET LINE (2) N.T.S. (C12)

**SOUTHERN NEVADA WATER AUTHORITY**  
 DATE: 11/16/08  
 SNWA APPROVAL IS VALID FOR ONE (1) YEAR FROM THE SIGNATURE DATE. IF CONSTRUCTION WITHIN THE EASEMENT OR RESTRICTED PIPE SAFETY ZONE IS NOT COMPLETE, PLANS MUST BE RESUBMITTED TO SNWA FOR APPROVAL.

**SNWA CONSTRUCTION NOTE:**  
 CONTRACTOR SHALL FIELD LOCATE AND PROTECT ALL SNWA/SNWS APPURTENANCES INCLUDING, BUT NOT LIMITED TO AV/AR, ACCESS MANWAYS AND CATHODIC PROTECTION SYSTEMS. ALL ABOVE GROUND STRUCTURES AND AT GRADE STRUCTURES MUST BE ADJUSTED TO NEW GRADE AT CONTRACTORS EXPENSE. CATHODIC PROTECTION TEST STATIONS, RECTIFIERS, AND AV/AR'S MUST BE RELOCATED TO THE SIDEWALK PER SNWA STANDARDS AND AT THE CONTRACTOR'S EXPENSE. CONTRACTOR TO NOTIFY SOUTHERN NEVADA WATER AUTHORITY, DEVELOPMENT PLAN REVIEW, AT (702) 862-3444 AT LEAST 48 HOURS PRIOR TO CONSTRUCTION ACTIVITY.



**Nevada Power**  
 6226 WEST SARAH AVE. MAIL STOP #10  
 LAS VEGAS, NEVADA 89146

DWG. NO.	C12-DET
PROJ. I.D.	DS36BL15
DATE	12/07
REV	7/08
BY	JM
APPROVAL	

**IRON MOUNTAIN SUBSTATION**  
 MISC. DETAILS AND TYPICAL SECTIONS

SHT. NO. **C12**  
 12 OF 15  
 Call before you Dig  
 1-702-455-7511  
 1-800-221-2600  
 1-702-221-2920

ISSUED FOR: CONSTRUCTION  
 REVIEW  
 BID  
 APPROVAL  
 DATE  
 BY  
 11/16/08  
 11/16/08  
 10-27-08