

**DISCLAIMER NOTE**  
 UTILITY LOCATIONS SHOWN HEREON ARE APPROXIMATE ONLY. IT SHALL BE THE CONTRACTOR'S RESPONSIBILITY TO DETERMINE THE EXACT HORIZONTAL AND VERTICAL LOCATION OF ALL EXISTING UNDERGROUND AND OVERHEAD UTILITIES PRIOR TO COMMENCING CONSTRUCTION. NO REPRESENTATION IS MADE THAT ALL EXISTING UTILITIES ARE SHOWN HEREON. THE ENGINEER ASSUMES NO RESPONSIBILITY FOR UTILITIES NOT SHOWN OR UTILITIES NOT SHOWN IN THEIR PROPER LOCATION.

**NOTE**  
 • SEE SHEET C3 FOR QUANTITIES  
 • SEE SHEET UT1 FOR SSMH AND SEWER CLEANOUT TABLES  
 • SEE SHEET UT1 FOR SOHM TABLE

**NOTE**  
 CONSTRUCTION WATER MAY BE RESTRICTED DEPENDING ON SYSTEM CAPACITY.

**WATER MAIN JOINT DEFLECTION (PVC 4'-24")**  
 PVC PIPE SHALL BE DEFLECTED AT THE JOINT ONLY. THE MAXIMUM ALLOWABLE DEFLECTION SHALL BE ONE (1) DEGREE PER JOINT WITH A MINIMUM RADIUS OF CURVATURE OF 1,100 FEET PER UDACS 2.06.01 AND 2.06.02.

FOR CHANGES IN DIRECTION EXCEEDING THE MAXIMUM ALLOWABLE JOINT DEFLECTION, FITTINGS SHALL BE USED. ESN.059 REVISED 06-01-04

**LEGAL DESCRIPTION**  
 A PORTION OF THE NORTHEAST QUARTER (NE 1/4) OF THE NORTHEAST QUARTER (NE 1/4) OF SECTION 03, TOWNSHIP 20 SOUTH, RANGE 60 EAST, M.D.M. CLARK COUNTY, NEVADA.

**BASIS OF BEARINGS:**  
 NORTH 89°47'17" WEST, BEING THE BEARING OF THE NORTH LINE OF THE NORTHEAST QUARTER (NE 1/4) OF THE SOUTHWEST QUARTER (SW 1/4) OF THE SOUTHWEST QUARTER (SW 1/4) OF SECTION 03, TOWNSHIP 20 SOUTH, RANGE 60 EAST, M.D.M. CLARK COUNTY, NEVADA AS SHOWN ON A RECORD OF SURVEY ON FILE IN THE OFFICE OF THE COUNTY RECORDER, CLARK COUNTY, NEVADA, IN FILE 134 OF SURVEYS, AT PAGE 80.

**NOTE**  
 IN UNPAVED AREAS FOR TRENCH SECTION BACKFILL SPECIFICATION SEE UDACS PLATE NO. 6A AND STANDARD DRAWING NO. 502.  
 FOR PIPE LOCATOR RIBBON TYPICAL INSTALLATION SEE UDACS PLATE NO. 27.

**NOTE**  
 INSTALL PIPELINE MARKER BALLS IN TRENCH ABOVE EACH HORIZONTAL ELBOW FITTING, PER UDACS PLATE NO. 27.

ALL SEWER/STORM DRAINS CROSSING WATER LINES MUST CONFORM TO SECTION 2.19 OF THE UNIFORM DESIGN AND CONSTRUCTION STANDARDS FOR POTABLE WATER SYSTEMS (UDACS) FOR WATER AND STORM MAIN CROSSINGS AND CLEARANCES.

**BENCHMARK**  
 PROJECT DATUM: NORTH AMERICAN VERTICAL DATUM OF 1988 (NAVD88)  
 CITY OF LAS VEGAS BENCHMARK: 1LV003NEES  
 NAVD88 ELEVATION: 706.792 METERS (2318.87 FEET)  
 RIVET AND PLATE IN TOP OF CURB @ SOUTHWEST CORNER OF RAINBOW AND RED COACH

**NOTE**  
 ALL ON-SITE SEWER IS PRIVATE AND IS TO BE PRIVATELY MAINTAINED.

**NOTE**  
 COORDINATE CONSTRUCTION OF EXISTING/NEW WATER SERVICES TO EXISTING RESIDENCES W/LVWD INSPECTION DIVISION. NIGHT WORK MAY BE REQUIRED.

**NOTE**  
 EXISTING POWER POLES TO BE RE-LOCATED PER POWER PLANS.

**NOTE**  
 ALL ABOVE GROUND UTILITY APPURTENANCES SHALL CONFORM TO THE REQUIREMENTS OF TITLE 19.12.040

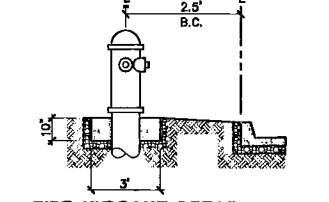
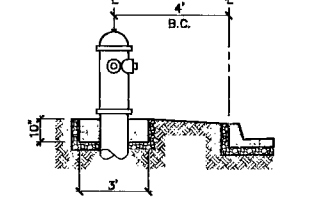
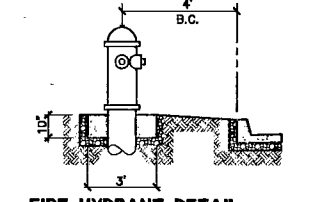
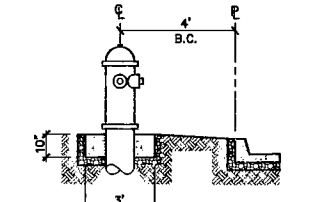
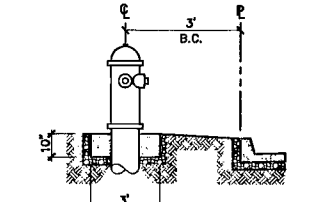
**PRIVATE WELLS TO BE REMOVED FROM SERVICE**  
 THE EXISTING PRIVATE WELL IS TO BE ABANDONED. THE DISTRICT WATER SERVICE WILL REMAIN IN THE OFF POSITION UNTIL THE WELL HAS BEEN ABANDONED (WHICH MUST BE ACCOMPLISHED WITHIN 30 DAYS OF THE INSTALLATION OF THE DISTRICT SERVICE), OR PHYSICALLY DISCONNECTED FROM THE ON-SITE SYSTEM. AN INSPECTION OF THE ON-SITE SYSTEM WILL BE DISCONNECTED FROM THE ON-SITE SYSTEM AND THAT THE WELL IS NO LONGER FUNCTIONAL. THE STATE OF NEVADA DIVISION OF WATER RESOURCES TELEPHONE NUMBER (702-486-2770) MAY BE CONTACTED FOR INFORMATION CONCERNING REQUIREMENTS AND PROCEDURES FOR ABANDONING WELLS.

**INSTALLATION OF METER AND VAULT (2) 6"x2"**  
 THE METER(S) AND VAULT(S) WITH NON-TRAFFIC BEARING COVER(S) SHALL BE INSTALLED IN ACCORDANCE WITH THE UDACS PLATE NO. 21D, AND WITH UDACS STANDARD VAULT DRAWING C-475, LATEST REVISION. ANY BLOCK WALL OR OTHER FENCE MATERIAL SHALL BE DESIGNED AND CONSTRUCTED AROUND THE OUTSIDE OF THE EASEMENT(S) TO ALLOW THE DIRECT ACCESS TO THE VAULT(S) FROM THE ADJACENT RIGHT-OF-WAY. EASEMENTS SHALL BE CLEARLY MARKED OR STAKED PRIOR TO THE START OF CONSTRUCTION.

METERS MUST BE SET IN A HORIZONTAL POSITION, AT LEAST EIGHT(8) DIAMETERS OF STRAIGHT PIPE ARE REQUIRED AT THE INLET END.

**Call before you Dig**  
 1-702-455-7511  
 CLARK COUNTY PUBLIC OPERATIONS  
 1-702-432-5300  
 FREEMAN AN AUTOMATIC SYSTEM OF TELEOPERATION

**Call before you Overhead**  
 811 OR 1-800-227-2600



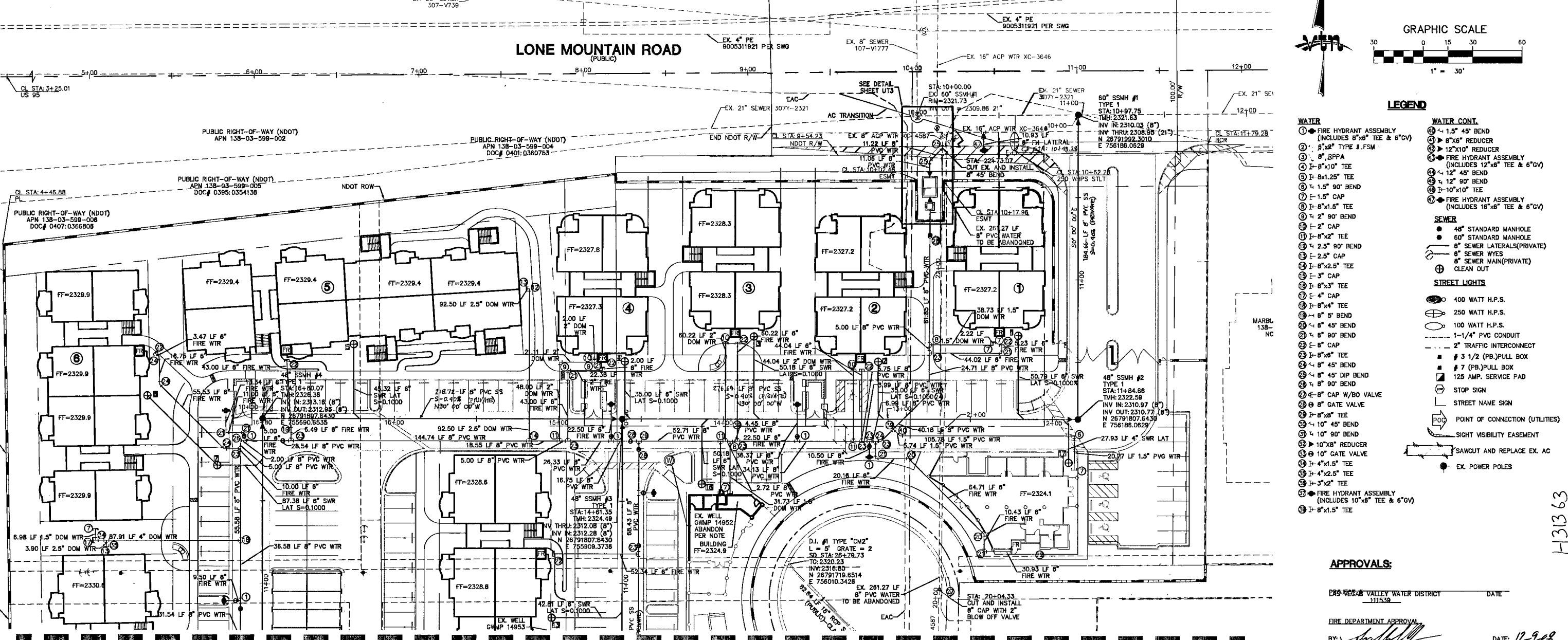
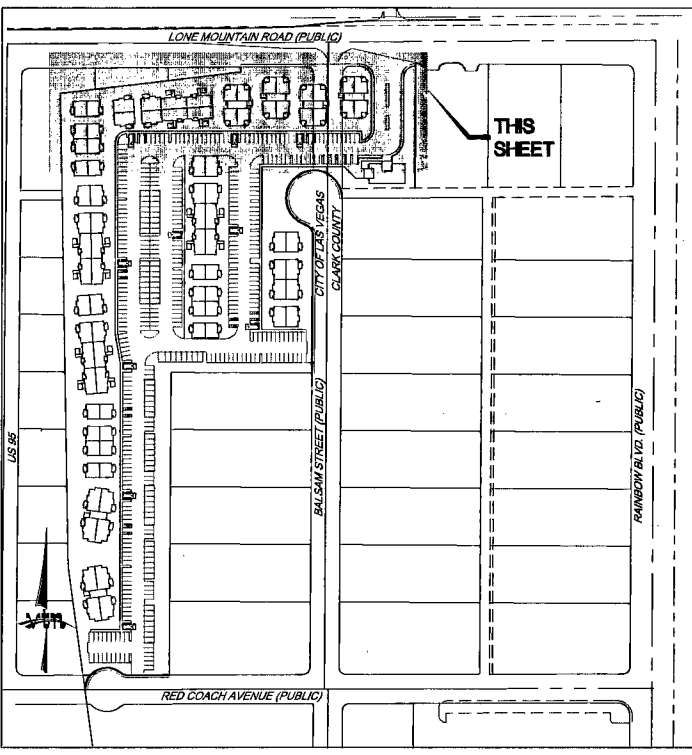
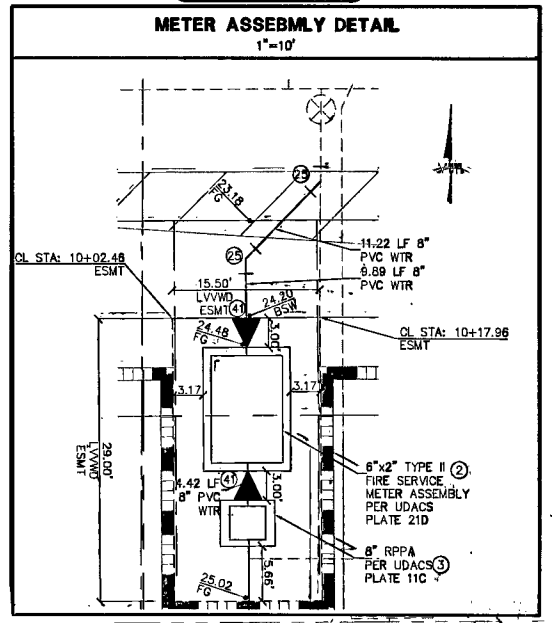
**FIRE HYDRANT DETAIL**  
 (NEAR THE CLUB HOUSE) N.T.S.  
 FIRE HYDRANT(S) TO BE INSTALLED IN ACCORDANCE WITH THE UDACS STANDARD PLATE NO. 7 ESN. 014

**FIRE HYDRANT DETAIL**  
 (BETWEEN BUILDINGS 2 & 3) N.T.S.  
 FIRE HYDRANT(S) TO BE INSTALLED IN ACCORDANCE WITH THE UDACS STANDARD PLATE NO. 7 ESN. 014

**FIRE HYDRANT DETAIL**  
 (IN FRONT OF BUILDING 4) N.T.S.  
 FIRE HYDRANT(S) TO BE INSTALLED IN ACCORDANCE WITH THE UDACS STANDARD PLATE NO. 7 ESN. 014

**FIRE HYDRANT DETAIL**  
 (BETWEEN BUILDINGS 5 & 6) N.T.S.  
 FIRE HYDRANT(S) TO BE INSTALLED IN ACCORDANCE WITH THE UDACS STANDARD PLATE NO. 7 ESN. 014

**FIRE HYDRANT DETAIL**  
 (ALONG LONE MOUNTAIN) N.T.S.  
 FIRE HYDRANT(S) TO BE INSTALLED IN ACCORDANCE WITH THE UDACS STANDARD PLATE NO. 7 ESN. 014



- LEGEND**
- WATER**
- ① FIRE HYDRANT ASSEMBLY (INCLUDES 8"x6" TEE & 6"GV)
  - ② 8" RPPA
  - ③ 8" TYPE II FPM
  - ④ 8"x10" TEE
  - ⑤ 8"x1.25" TEE
  - ⑥ 1.5" 90° BEND
  - ⑦ 1.5" CAP
  - ⑧ 8"x1.5" TEE
  - ⑨ 2" 90° BEND
  - ⑩ 2" CAP
  - ⑪ 8"x2" TEE
  - ⑫ 8"x3" TEE
  - ⑬ 8" CAP
  - ⑭ 8"x4" TEE
  - ⑮ 8" 45° BEND
  - ⑯ 8" 90° BEND
  - ⑰ 8" CAP
  - ⑱ 8"x6" TEE
  - ⑲ 8" 45° BEND
  - ⑳ 8" 90° BEND
  - ㉑ 8" CAP W/BO VALVE
  - ㉒ 8" GATE VALVE
  - ㉓ 10" 45° BEND
  - ㉔ 10" 90° BEND
  - ㉕ 10"x8" REDUCER
  - ㉖ 10" GATE VALVE
  - ㉗ 4"x1.5" TEE
  - ㉘ 4"x2.5" TEE
  - ㉙ 4"x2" TEE
  - ㉚ FIRE HYDRANT ASSEMBLY (INCLUDES 10"x8" TEE & 6"GV)
  - ㉛ 8"x1.5" TEE
- WATER CONT.**
- ① 1.5" 45° BEND
  - ② 8"x6" REDUCER
  - ③ 12"x10" REDUCER
  - ④ FIRE HYDRANT ASSEMBLY (INCLUDES 12"x8" TEE & 6"GV)
  - ⑤ 12" 45° BEND
  - ⑥ 12" 90° BEND
  - ⑦ 10"x10" TEE
  - ⑧ FIRE HYDRANT ASSEMBLY (INCLUDES 16"x8" TEE & 6"GV)
- SEWER**
- ① 48" STANDARD MANHOLE
  - ② 60" STANDARD MANHOLE
  - ③ 8" SEWER LATERALS(PRIVATE)
  - ④ 8" SEWER WYES
  - ⑤ 8" SEWER MAIN(PRIVATE)
  - ⑥ CLEAN OUT
- STREET LIGHTS**
- ① 400 WATT H.P.S.
  - ② 250 WATT H.P.S.
  - ③ 100 WATT H.P.S.
  - ④ 1-1/4" PVC CONDUIT
  - ⑤ 2" TRAFFIC INTERCONNECT
  - ⑥ 8" CAP
  - ⑦ 3 1/2" (PB) PULL BOX
  - ⑧ 7" (PB) PULL BOX
  - ⑨ 125 AMP. SERVICE PAD
  - ⑩ STOP SIGN
  - ⑪ STREET NAME SIGN
  - ⑫ POINT OF CONNECTION (UTILITIES)
  - ⑬ SIGHT VISIBILITY EASEMENT
  - ⑭ SAWCUT AND REPLACE EX. AC
  - ⑮ EX. POWER POLES

**APPROVALS:**

CLARK COUNTY VALLEY WATER DISTRICT  
 DATE: 11/15/08

FIRE DEPARTMENT APPROVAL

BY: [Signature] DATE: 12/9/08  
 APPROVAL: THESE PLANS SHALL NOT BE CONSIDERED TO BE A PERMIT FOR OR AN APPROVAL OF ANY VIOLATION OF ANY OF THE PROVISIONS OF THE STATE OR COUNTY LAWS.  
 107V5176

STERLING S. DEVELOPMENT  
 CITY OF LAS VEGAS  
 6395 CAMERON STREET  
 LAS VEGAS, NV 89118  
 (702) 971-0555 FAX (702) 971-8630

UTILITY PLAN  
 INSPIRADO APARTMENTS

DRAWN BY: LHM 9/08  
 DESIGNED BY: LHM 9/08  
 CHECKED BY: SRC 9/08  
 PROJECT NO: 7017  
 SCALE: 1"=30' HORIZ. 1"=4' VERT.  
 SHEET UT3  
 14 OF 41 SHEETS  
 DRAWING NO. HTE# 09-228



EXPIRES 06-30-09  
 12/10/08