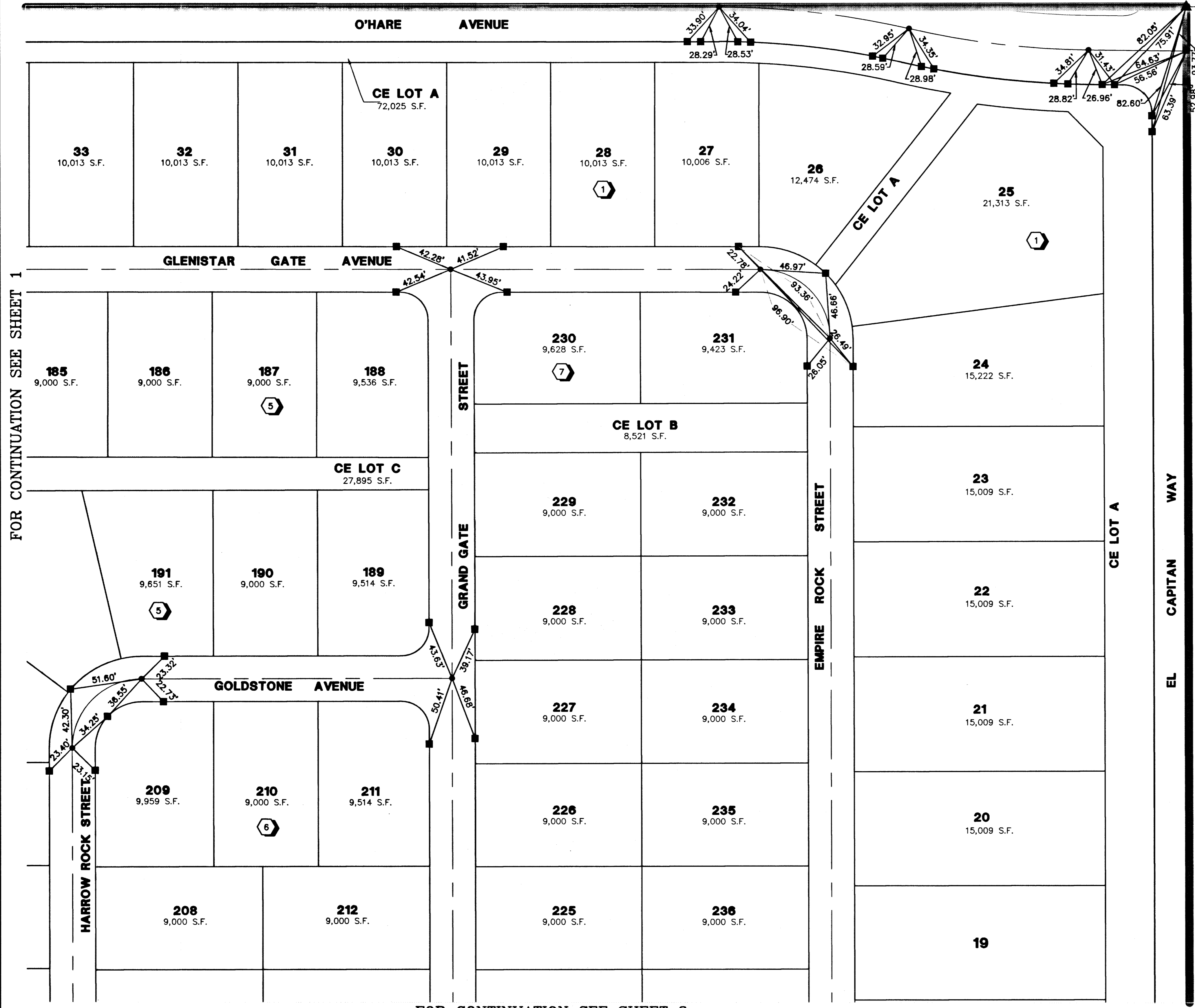


# IRON MOUNTAIN ESTATES - UNIT 2

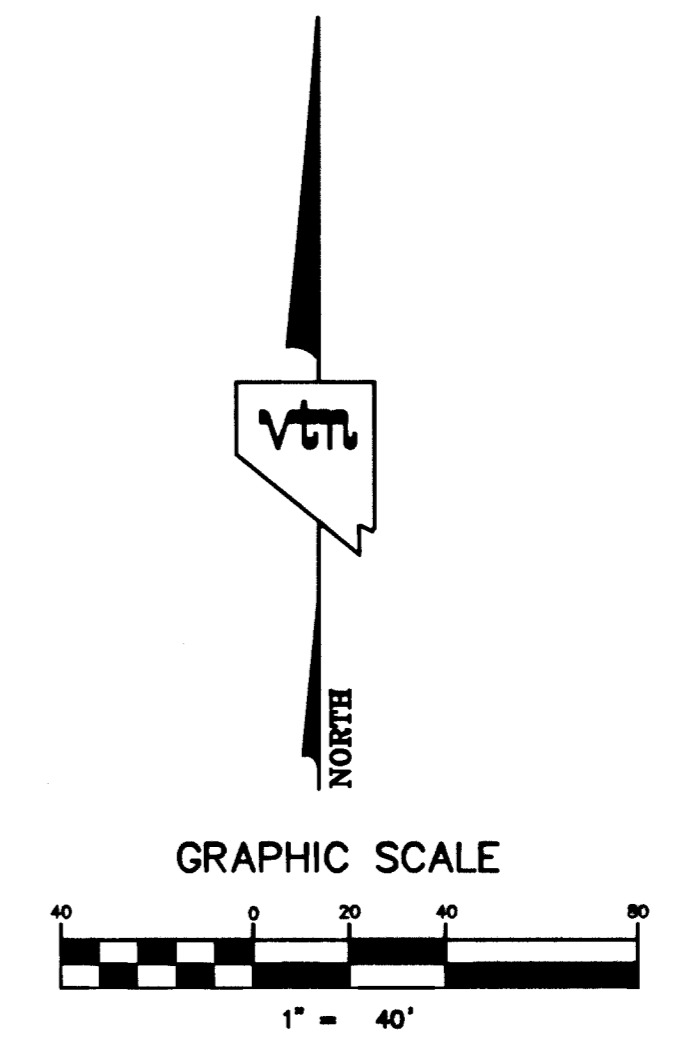
## MONUMENTATION TIE MAP

(A COMMON INTEREST COMMUNITY)  
 BEING A PORTION OF THE SOUTH HALF (S 1/2) OF THE SOUTHWEST QUARTER (SW 1/4) OF  
 SECTION 5, TOWNSHIP 19 SOUTH, RANGE 60 EAST, M.D.M., CITY OF LAS VEGAS, CLARK COUNTY, NEVADA.



FOR CONTINUATION SEE SHEET 1

FOR CONTINUATION SEE SHEET 3



**NOTES**

SEE FINAL MAP FOR BEARING AND DISTANCES.  
 (BOOK 092, PAGE 0017)

**LEGEND**

- 2 LOT NUMBER
- SECTION LINE
- LOT LINES
- UNIT BOUNDARY
- STREET CENTERLINE
- BACK OF CURB LINE
- SET TYPE III MONUMENT - 5/8" REBAR AND AL. CAP STAMPED "VTN PLS 14195" WITH REFERENCE MONUMENTS IN TOP OF CURB
- FOUND TYPE II MONUMENT - 2" BRASS CAP IN CONCRETE STAMPED "VTN PLS 11449" WITH REFERENCE MONUMENTS IN TOP OF CURB
- SET TYPE IV-A REFERENCE MONUMENTS STAMPED "VTN PLS 14195" IN TOP OF CURB

109553

058-4622-2