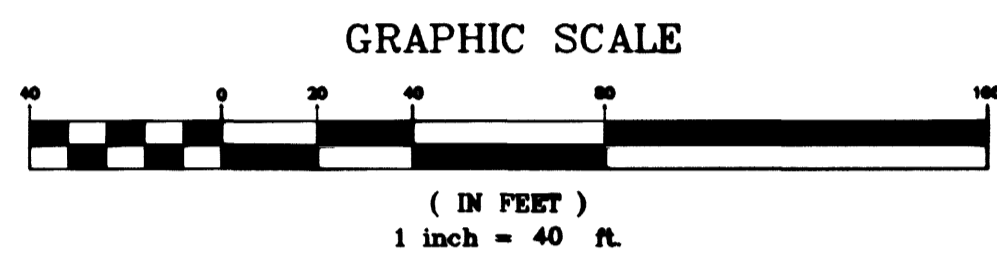
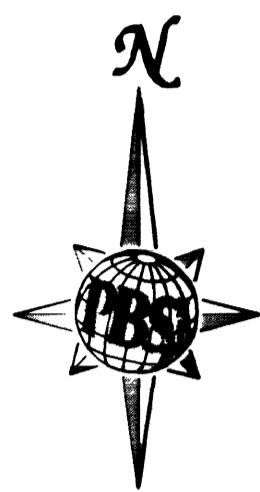


Avoid cutting underground utility lines. Call before you dig.  
**Call before you Dig**  
 1-800-227-2600

# MONUMENT TIE MAP OF GRAND ESTATES EAST II

(AS RECORDED IN BOOK 92, PAGE 56 OF OFFICIAL RECORDS)

A PORTION OF THE SOUTHWEST QUARTER (SW 1/4) OF  
 THE SOUTHEAST QUARTER (SE 1/4) OF SECTION 5,  
 TOWNSHIP 20 SOUTH, RANGE 60 EAST, M.D.M.,  
 CITY OF LAS VEGAS, CLARK COUNTY, NEVADA



S 1/16  
 SEC 5

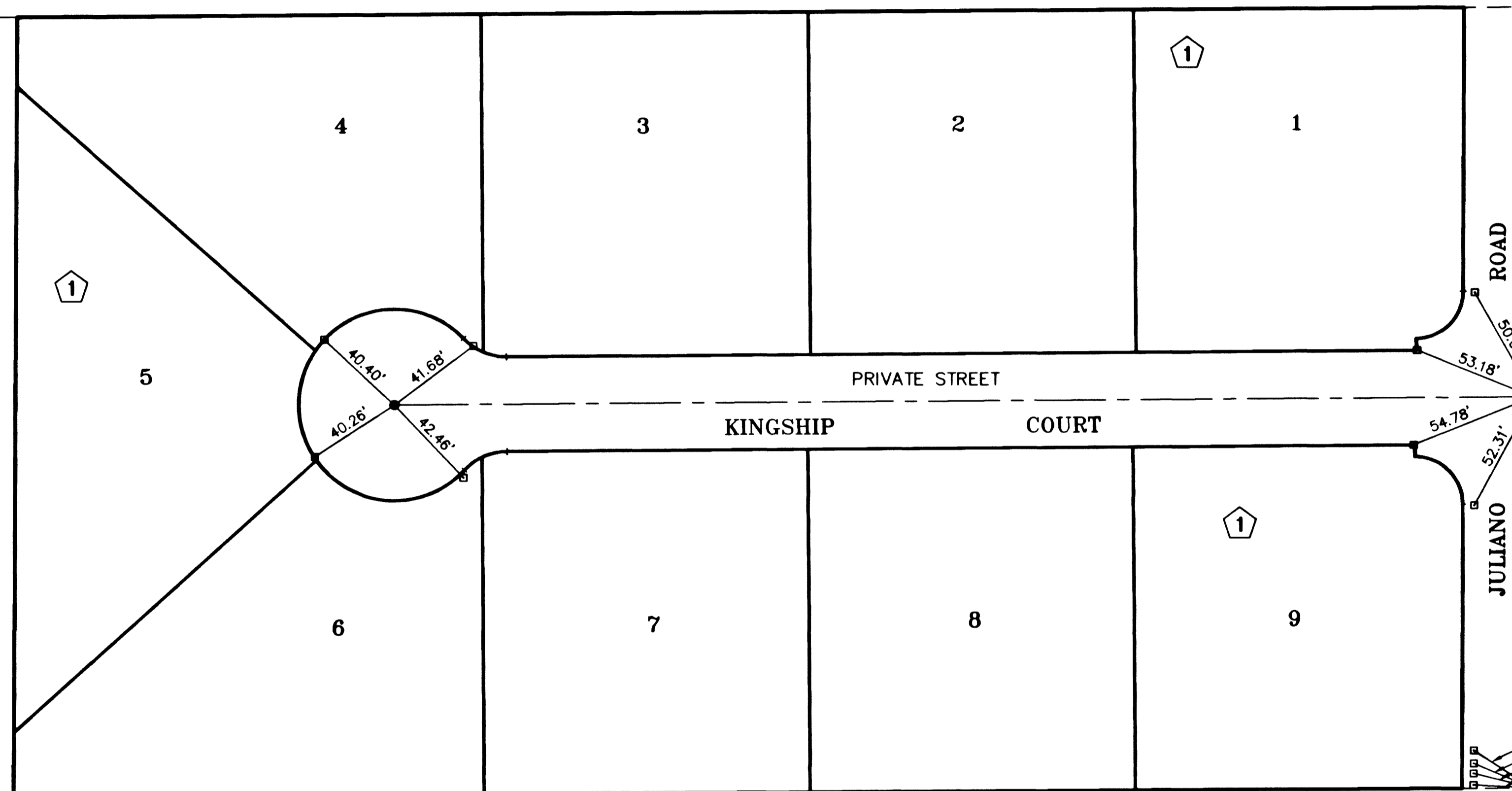
NOT A PART  
 APN 138-05-401-029

NOT A PART  
 APN 138-05-401-029

EL CAPITAN WAY

NOT A PART  
 GRAND ESTATES EAST I  
 BOOK \_\_, PAGE \_\_

NOT A PART  
 GRAND ESTATES EAST I  
 BOOK \_\_, PAGE \_\_



NOT A PART  
 APN 138-05-801-023

NOT A PART  
 APN 138-05-801-024

**SURVEYOR'S CERTIFICATE**

I, ERIC CHRISTIANSON, A PROFESSIONAL LAND SURVEYOR, LICENSED IN THE STATE OF NEVADA, DO HEREBY CERTIFY THAT THE MONUMENTS HAVE BEEN SET AND THE TIE DISTANCE ESTABLISHED AS SHOWN HEREON. THIS SURVEY WAS COMPLETED ON MAY 11, 2000.

ERIC CHRISTIANSON  
 PROFESSIONAL LAND SURVEYOR  
 STATE OF NEVADA  
 LICENSE NO. 8895

**LEGEND**

- SET TYPE III MONUMENT W/ 4 TIES PLS # 8895
- BRASS REFERENCE MONUMENT SET IN TOP OF CURB PLS # 8895
- 17 LOT NUMBER
- ① BLOCK NUMBER

1/4  
 5  
 8

Job Number	510859	Drawn by	Scale	No.	REVISIONS	Date/Init.	Date
Sheet Number	1 OF 1	Checked by	AS SHOWN	File No.			
		Date	MAY 15, 2000	859mt-2			
		PLAT DATE:	05/15/00				

6500 West Charleston Blvd.  
 Suite 140  
 Las Vegas, NV 89122  
 Telephone: 702/735-0444  
 Fax: 702/735-3798

**PBS**  
 POST, BUCKLEY,  
 SCHULH &  
 BERNICAN

ENGINEERING • PLANNING • SURVEYING • CONSTRUCTION SERVICES

MONUMENT TIE MAP  
 FOR  
 GRAND ESTATES  
 EAST II  
 BOOK 92, PAGE 56 OF PLATS  
 CITY OF LAS VEGAS,  
 CLARK COUNTY, NEVADA