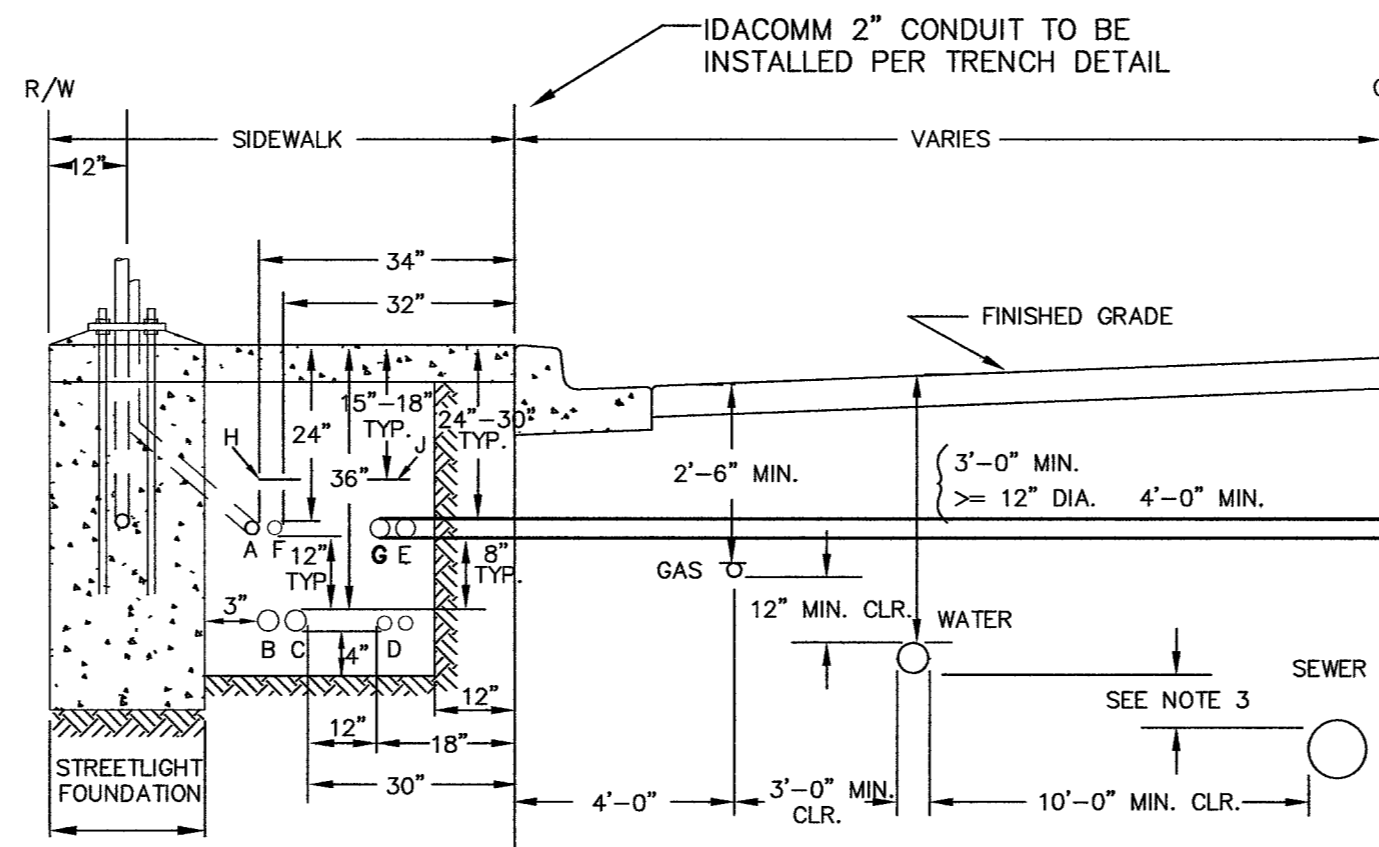


LENGTH OF FIBER CABLE IN CITY OF LAS VEGAS RIGHT-OF-WAY

UNDERGROUND IN CITY OF LAS VEGAS
RIGHT-OF-WAY
= 134.93± FEET



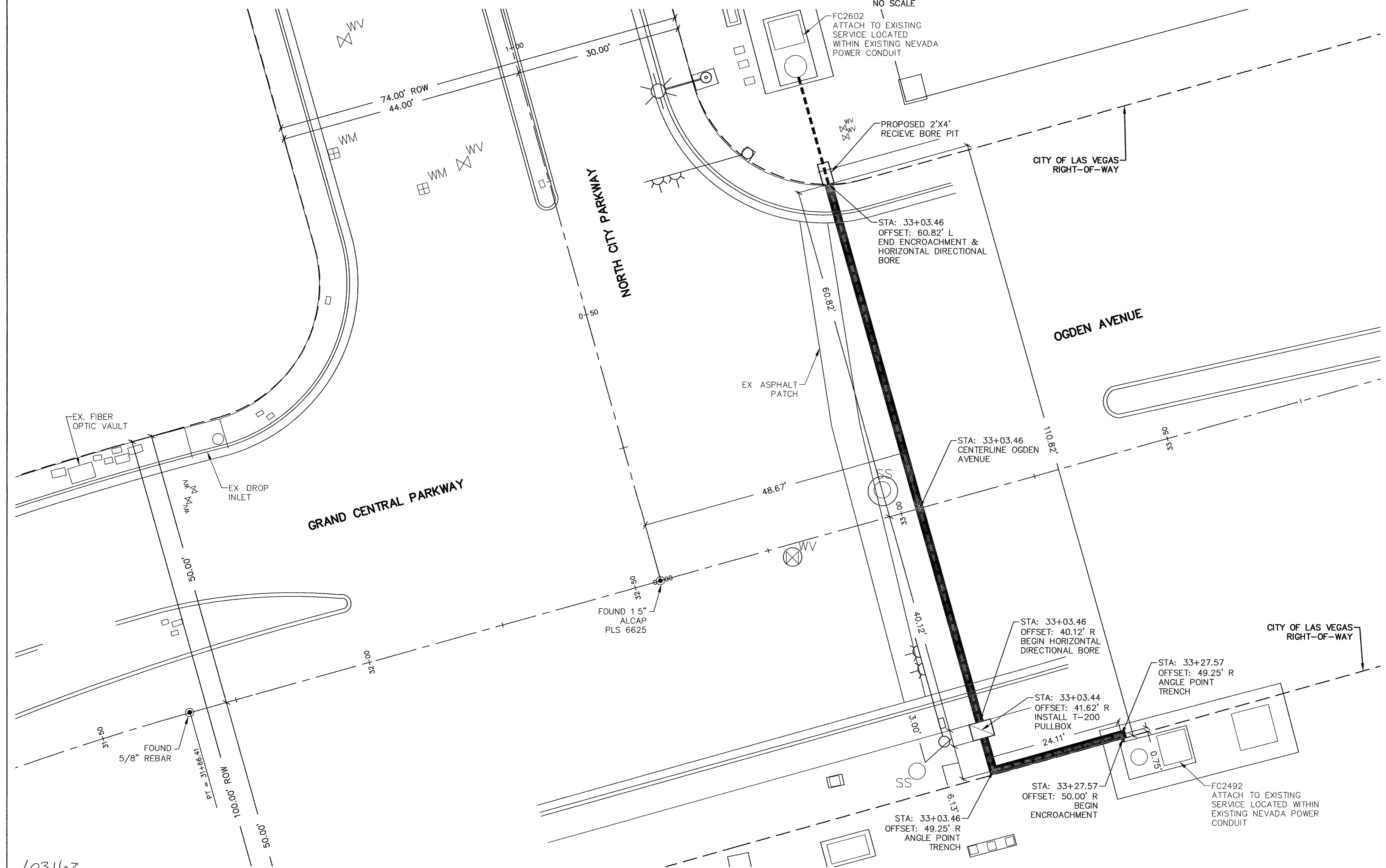
- NOTES:**
- SEWER MAY BE LOCATED ON OTHER SIDE OF CENTERLINE AS TERRAIN DICTATES.
 - STREETLIGHT FOUNDATIONS SHALL BE LOCATED BEHIND SIDEWALK FOR SIDEWALK WIDTHS LESS THAN 5 FEET PER STANDARD DRAWING NO. 320.
 - SEPARATION DISTANCE SHALL CONFORM TO UTILITY STANDARDS ADOPTED BY THE GOVERNING AGENCY FOR SEWER AND WATER FACILITIES.

AVOID CUTTING UNDERGROUND UTILITY LINES. IT'S COSTLY.

Call before you Dig.

1-800-227-2600
UNDERGROUND SERVICE ALERT (USA)

DETAIL A-A
UNIFORM STANDARD DRAWING #501



LEGEND

- FOUND MONUMENT AS NOTED
- STREET CENTERLINE
- RIGHT-OF-WAY LINE
- PROPERTY LINE
- TIE LINE
- WATER METER
- WATER VALVE
- SEWER MANHOLE
- STORM DRAIN MANHOLE
- TELEPHONE MANHOLE
- STREET LIGHT
- PROPOSED IDACOMM 4" CONDUIT WITHIN CITY OF LAS VEGAS RIGHT-OF-WAY.
- PROPOSED (1) 144CT FIBER & (3) 1-1/4" INNERDUCT WITHIN (1) 4' CONDUIT WITHIN CITY OF LAS VEGAS RIGHT-OF-WAY
- PROPOSED (1) 144CT FIBER & (3) 1-1/4" INNERDUCT OUTSIDE OF CITY OF LAS VEGAS RIGHT-OF-WAY
- PROPOSED T-200 PULLBOX

GRAPHIC SCALE

(IN FEET)
1" = 10'

PROFESSIONAL ENGINEER'S SEAL

CHRIS WENER
Exp. 6/30/08
CIVIL
No. 11930
MAY 23 2007

REV. BY	APPR.	DESCRIPTION	DATE

SPECTRUM
SURVEYING & ENGINEERING
7351 W. CHARLESTON BLVD., SUITE 120
LAS VEGAS, NEVADA 89117
OFFICE: (702) 367-7705
FAX: (702) 367-8733

IDACOMM
5860 SOUTH PECOS ROAD
BUILDING G, SUITE 100
LAS VEGAS, NEVADA 89120
PHONE: (702) 948-7931
FAX: (702) 948-7929

ENCROACHMENT PERMIT SURVEY

GRAND CENTRAL PARKWAY

WORK ORDER#	
PERMIT #	
ENTITY LOC.	
DATE: 04/24/2007	
JOB NO: C007037	
DRAWN BY: JC	
CHECKED BY: DE	
SCALE: 1" = 10'	

103162

107V4869-FIB