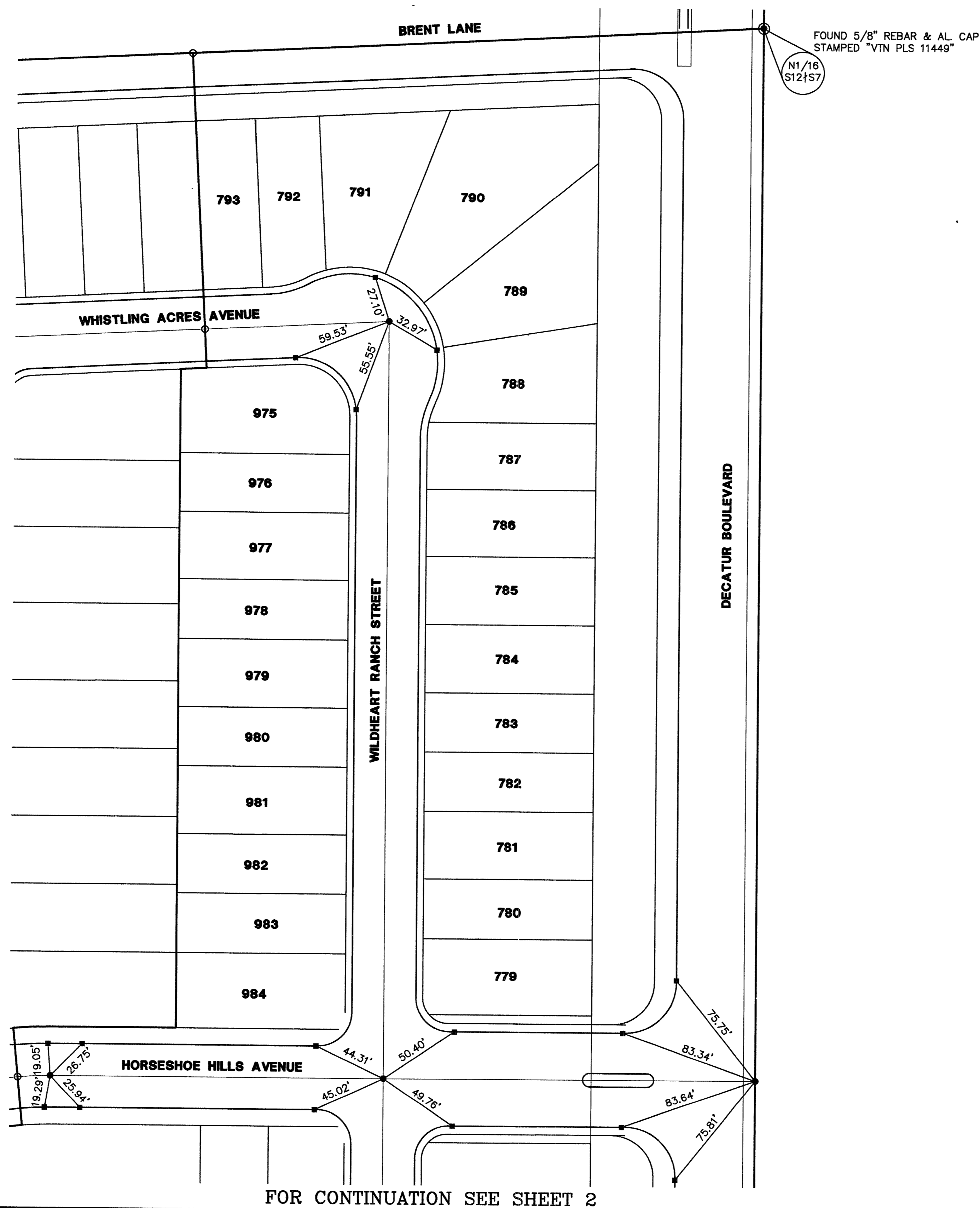


IRON MOUNTAIN RANCH - VILLAGE 7 - UNIT 3

MONUMENTATION TIE MAP

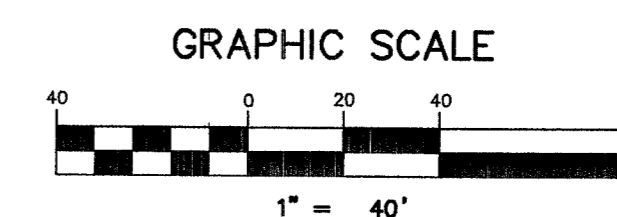
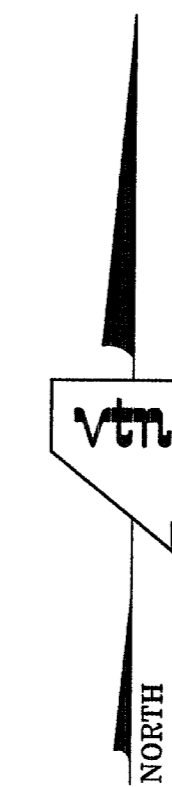
(A COMMON INTEREST COMMUNITY)
 BEING A SUBDIVISION OF A PORTION OF THE SOUTHEAST QUARTER (SE 1/4) OF THE NORTHEAST QUARTER (NE 1/4)
 OF SECTION 12, TOWNSHIP 19 SOUTH, RANGE 60 EAST, M.D.M., CITY OF LAS VEGAS, CLARK COUNTY, NEVADA



I, ANTHONY ZICARI, A PROFESSIONAL LAND SURVEYOR LICENSED IN THE STATE OF NEVADA, DO HEREBY CERTIFY THAT THE MONUMENTS HAVE BEEN SET AND THE TIE DISTANCES ESTABLISHED AS SHOWN HEREON. THIS SURVEY WAS COMPLETED ON JULY 29, 2004.



ANTHONY ZICARI, P.L.S.
 NEVADA LICENSE NO. 11449



NOTES

SEE FINAL MAP FOR BEARING AND DISTANCES.
 (BOOK 106, PAGE 71)

LEGEND

- 2** LOT NUMBER
- LOT LINES
- SUBDIVISION BOUNDARY LINE
- STREET CENTERLINE
- BACK OF CURB LINE
- TYPE III MONUMENT - 5/8" REBAR AND AL. CAP STAMPED "VTN PLS 11449" WITH REFERENCE MONUMENTS IN TOP OF CURB PER BOOK 106, PAGE 71
- TYPE IV-A REFERENCE MONUMENTS STAMPED "VTN PLS 11449" IN TOP OF CURB PER BOOK 106, PAGE 71
- TYPE III MONUMENT - 5/8" REBAR & AL. CAP STAMPED "VTN PLS 11449" WITH REFERENCE MONUMENTS IN TOP OF CURB PER "IRON MOUNTAIN RANCH VILLAGE 7 - UNIT 2", BOOK 105, PAGE 24