

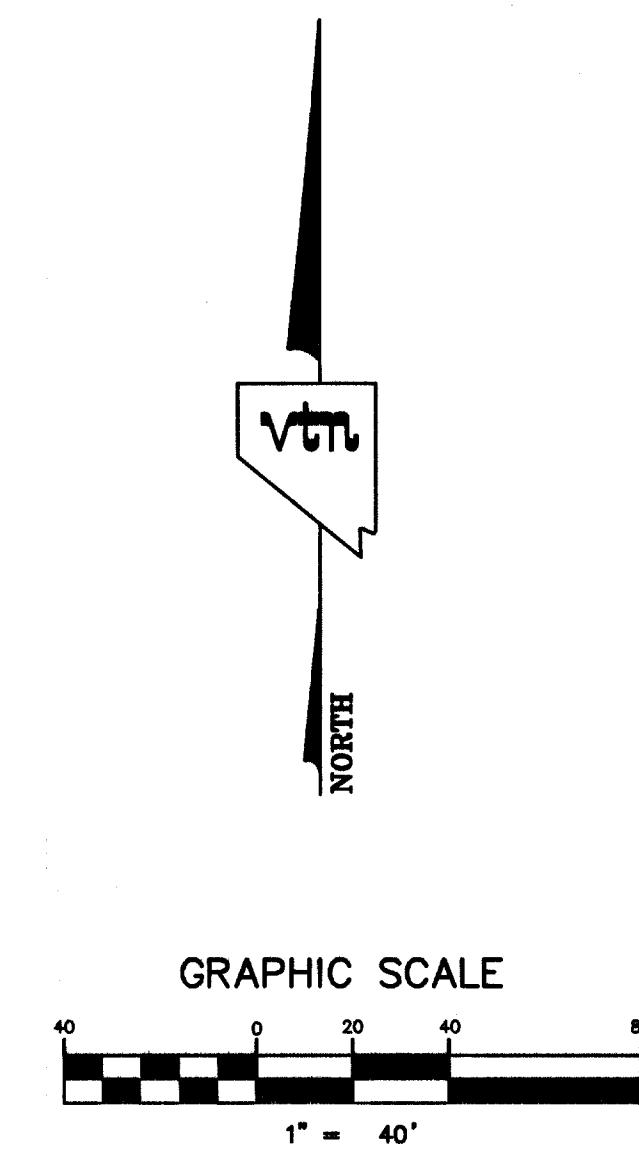
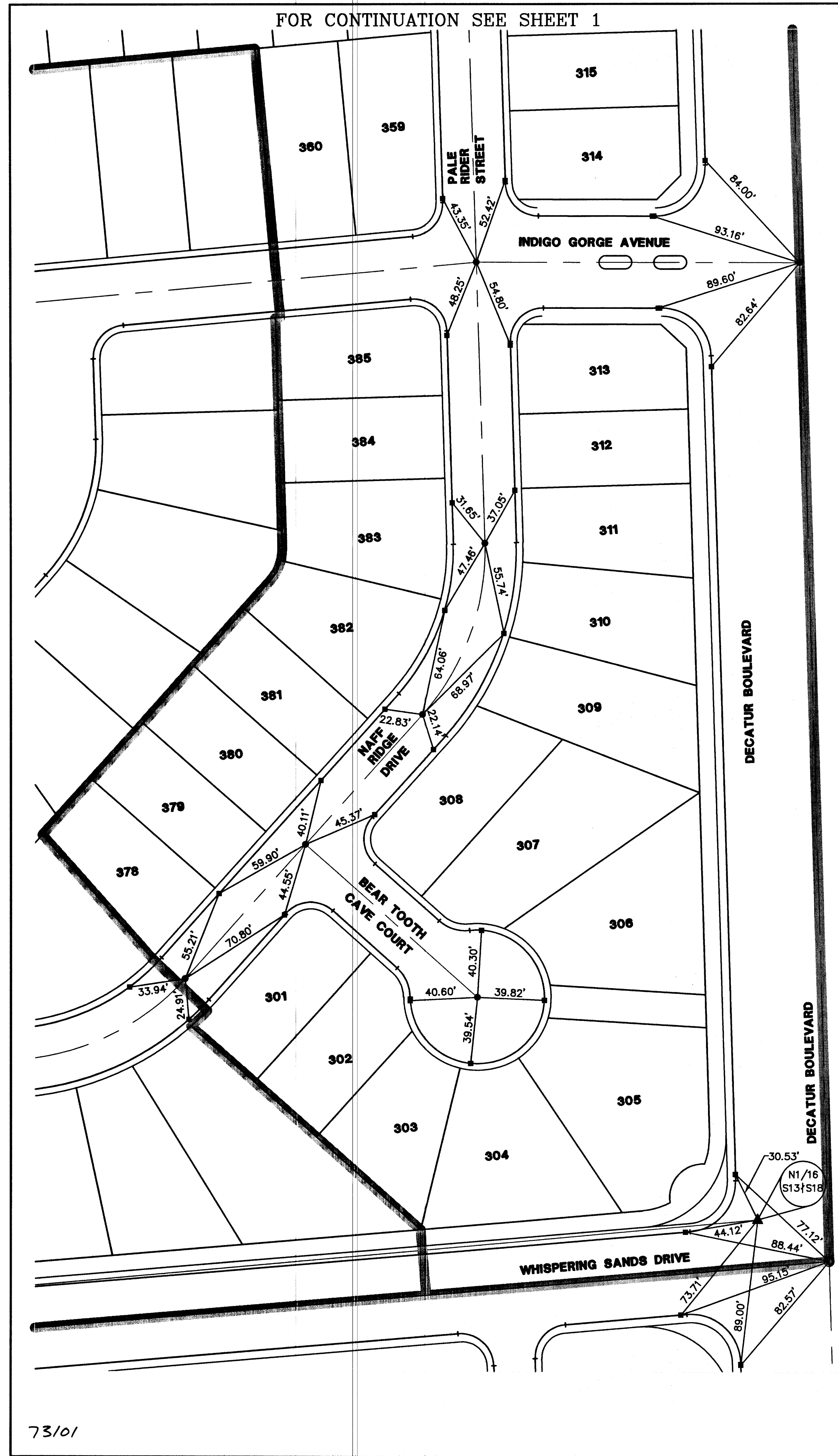
FOR CONTINUATION SEE SHEET 1

# IRON MOUNTAIN RANCH - VILLAGE 2 - UNIT 3

## MONUMENTATION TIE MAP

(A COMMON INTEREST COMMUNITY)

BEING A PORTION OF THE NORTHEAST QUARTER (NE 1/4) OF THE NORTHEAST QUARTER (NE 1/4) OF SECTION 13, TOWNSHIP 19 SOUTH, RANGE 60 EAST, M.D.M., CITY OF LAS VEGAS, CLARK COUNTY, NEVADA.



### NOTES

SEE FINAL MAP FOR BEARING AND DISTANCES.  
(BOOK 104, PAGE 0016)

### LEGEND

- 2** LOT NUMBER
- SECTION LINE
- LOT LINES
- UNIT BOUNDARY
- - - STREET CENTERLINE
- BACK OF CURB LINE
- SET TYPE III MONUMENT - 5/8" REBAR AND AL. CAP STAMPED "VTN PLS 11449" WITH REFERENCE MONUMENTS IN TOP OF CURB
- SET TYPE IV-A REFERENCE MONUMENTS STAMPED "VTN PLS 11449" IN TOP OF CURB
- ▲ SET TYPE II MONUMENT - 2" BRASS CAP IN CONCRETE STAMPED "VTN PLS 11449" WITH REFERENCE MONUMENTS IN TOP OF CURB
- FOUND AS DESCRIBED

FOUND 1 1/2" AL. CAP  
VTN PLS 6201 PER RECORD  
OF SURVEY: FILE 57, PAGE 05

SHEET 2 OF 2

73101

058-4604-2-3

7\MONUMENT TIE\5917-NTM\43.DWG, 08/30/2004 07:52:58 AM, J8600D