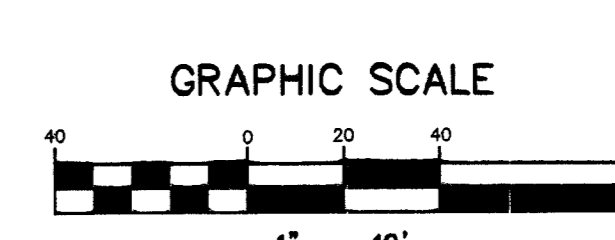
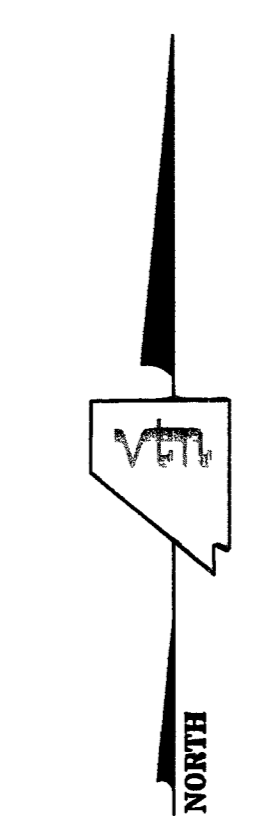


IRON MOUNTAIN RANCH - VILLAGE 11 - UNIT 2 MONUMENTATION TIE MAP

(A COMMON INTEREST COMMUNITY)
BEING A PORTION OF THE NORTHWEST QUARTER
(NW 1/4) OF THE NORTHWEST QUARTER (NW 1/4)
OF SECTION 12, TOWNSHIP 19 SOUTH, RANGE 60
EAST, M.D.M., CITY OF LAS VEGAS, CLARK COUNTY,
NEVADA

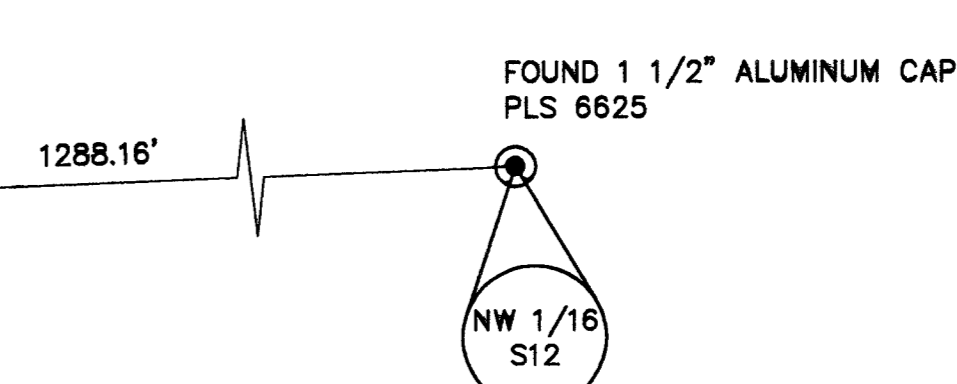


NOTES

SEE FINAL MAP FOR BEARING AND DISTANCES.
(BOOK 116, PAGE 0099)

LEGEND

- 2** LOT NUMBER
- (X)** BLOCK NUMBER
- RIGHT OF WAY
- LOT LINES
- SUBDIVISION BOUNDARY LINE
- STREET CENTERLINE
- BACK OF CURB LINE
- TYPE III MONUMENT - 5/8" REBAR AND AL. CAP STAMPED "VTN PLS 11449"
- TYPE IV-A REFERENCE MONUMENTS STAMPED "VTN PLS 11449" IN TOP OF CURB
- ◆** TYPE III MONUMENT - 5/8" REBAR AND AL. CAP STAMPED "VTN PLS 11449" PER IRON MOUNTAIN RANCH - VILLAGE 11 UNIT 1
- ▲** TYPE IV-A REFERENCE MONUMENTS STAMPED "VTN PLS 11449" IN TOP OF CURB PER IRON MOUNTAIN RANCH - VILLAGE 11 UNIT 1
- ◇** TYPE I MONUMENT - 2" BRASS CAP IN CONCRETE STAMPED "VTN PLS 11449" SET IN WELL MONUMENT WITH REFERENCE MONUMENTS IN TOP OF CURB
- ▲** TYPE II MONUMENT - 2" BRASS CAP IN CONCRETE STAMPED "VTN PLS 11449" WITH REFERENCE MONUMENTS IN TOP OF CURB
- TYPE IV-A REFERENCE MONUMENTS STAMPED "VTN PLS 11449" IN TOP OF CURB
- ⊙** FOUND MONUMENT AS DESCRIBED



058-4604-11-2
SHEET 2 OF 2

112130