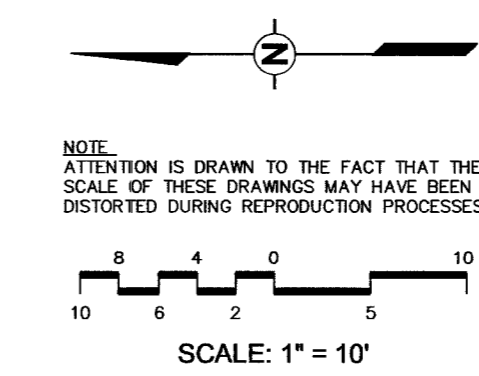
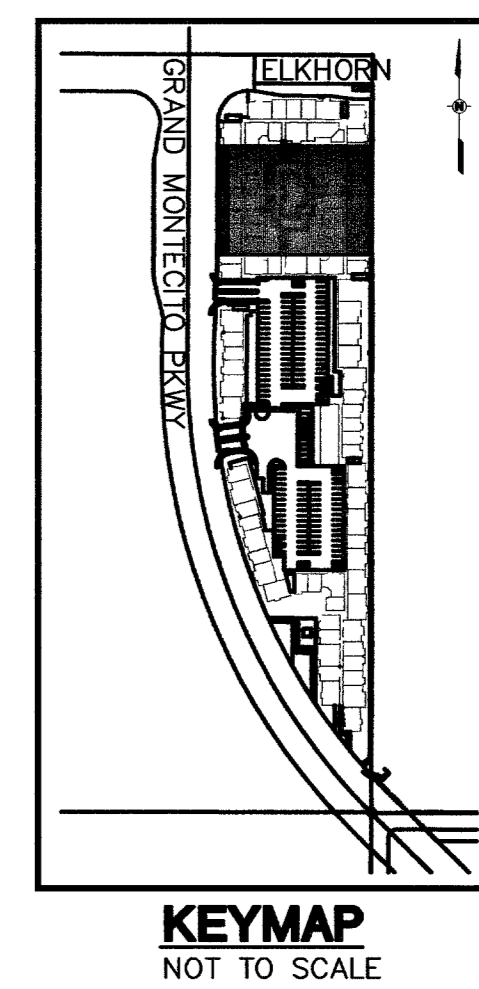
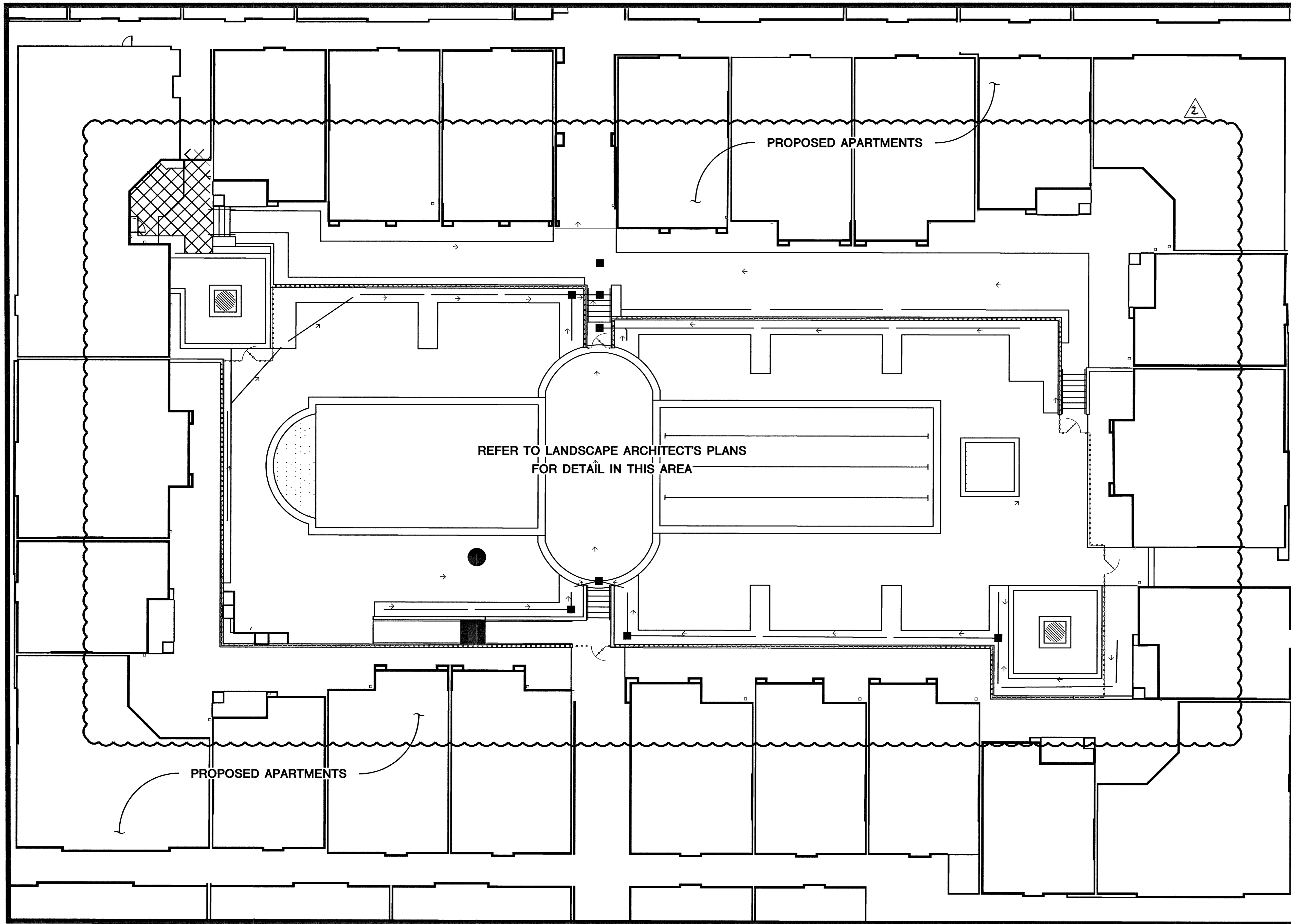


Date: February 27, 2007 11:30am / User: tomportz
 Path: K:\Projects\091946001\091946001.dwg
 This document, together with the concepts and designs presented herein, is intended only for the specific purpose and client for which it was prepared. Please do not disseminate or use this document without written authorization and approval by Kimley-Horn and Associates, Inc. All rights reserved.

100 388



SAFETY ALERT
 Call Before You Overhead
 1-702-593-6111

Avoid cutting underground utility lines. It's costly.
Call before you Dig
 1-800-227-2600

REVISION REV. DATE BY	
REVISED COURTYARD TO REFERENCE LANDSCAPE ARCHITECT'S PLANS	
WP SOUTH ACQUISITIONS, LLC 15150 N. HAYDEN ROAD, SUITE 104 PHOENIX, AZ 85020 PH: (480) 607-0822 FAX: (480) 664-7525	
Kimley-Horn and Associates, Inc. 1050 East Flamingo Road Las Vegas, Nevada 89119 Tel. No. (702) 734-5666 Fax. No. (702) 735-4949	
HORIZONTAL CONTROL PLAN COURT YARD	
GRAND MONTECITO APARTMENTS	
DRAWN BY: ARC	DATE: 09/11/06
DESIGNED BY: CDK	DATE: 09/11/06
CHECKED BY: RAM	DATE: 09/11/06
PROJECT NO: 091946001	SCALE: 1" = 10'
SHEET C2.4 7 OF 15 SHEETS CLV DWG. # 10N4715 RE-PLLOT	