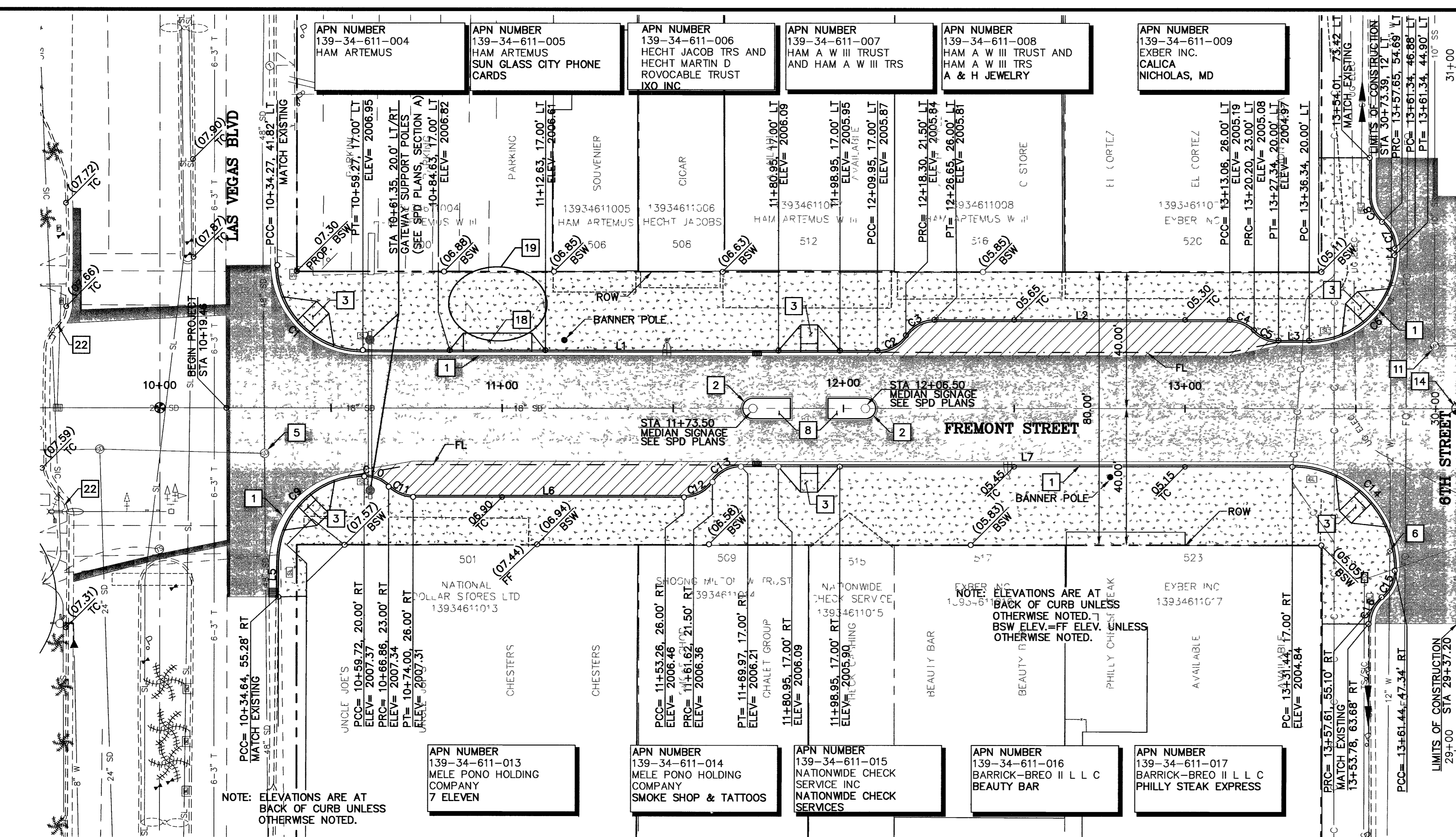
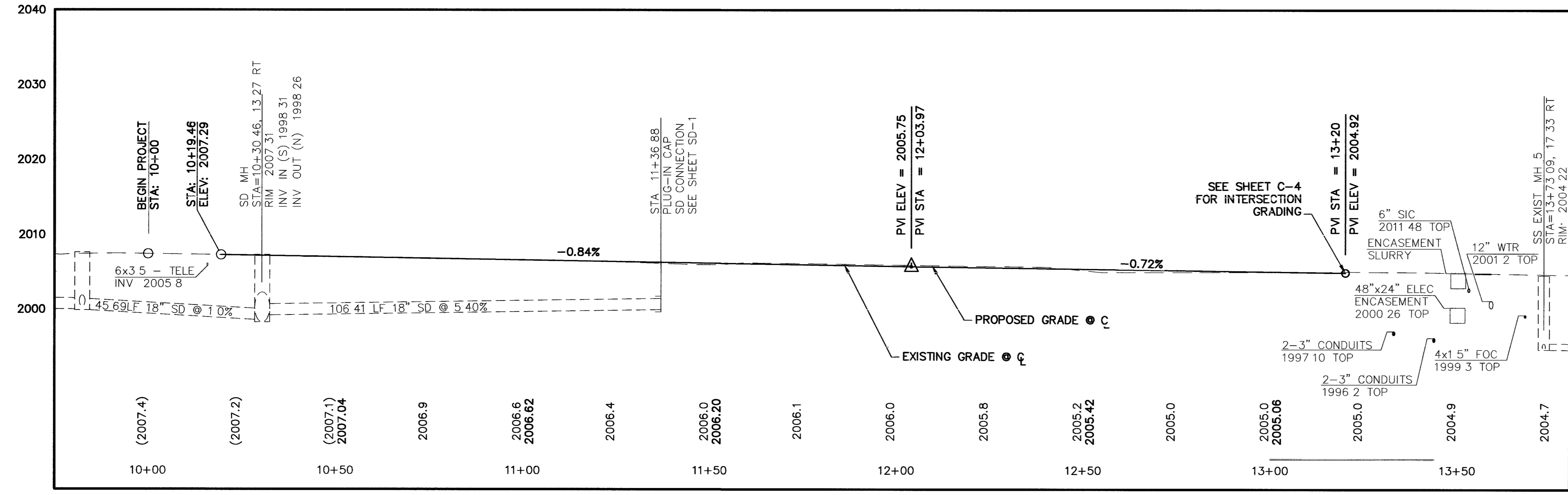


Oct 11, 2006 - 11:54am - USER maria.garcia  
 K:\projects\107256\1010 Fremont\2005\Design\256010001.dwg



PLAN VIEW



PROFILE

**BENCHMARK**

CITY OF LAS VEGAS VERTICAL CONTROL POINT "2LV01 2756", BEING AN NDOT MONUMENT IN THE TOP OF CURB @ NE CORNER BONANZA AND MAIN.  
 ELEVATION: 2011.35 (FEET)  
 613.0600 (METERS)

CITY OF LAS VEGAS VERTICAL CONTROL DATED 06/2002 BASED UPON THE NORTH AMERICAN VERTICAL DATUM OF 1988 (NAVD 88).

**BASIS OF BEARINGS**

GRID NORTH AS DEFINED BY THE NORTH AMERICAN DATUM OF 1983 (NAD 83), NEVADA STATE PLANE EAST (2701) ZONE, SAID BEARINGS WERE DETERMINED BY STATIC GLOBAL POSITIONING SYSTEM (GPS) MEASUREMENTS PROCESSED BY THE NATIONAL GEODETIC SURVEY DIVISION OF THE NATIONAL OCEANIC AND ATMOSPHERIC ADMINISTRATION USING THE ON-LINE POSITIONING USER SERVICE (OPUS). THE REFERENCE FRAME USED WAS NAD83 (GORS96) WITH AN EPOCH OF 2002.0000. ALL DISTANCES SHOWN HEREON ARE GROUND VALUES.

**CONSTRUCTION NOTES**

- PAVEMENT SECTION PER TYPICAL SECTIONS, SHEET TYP-1.
- CONSTRUCT LOADING ZONE PAD, PER DETAIL ON SHEET DT-1.
- CONSTRUCT SIDEWALK PER CCAUSD No. 234. SEE HARDSCAPE/LANDSCAPE PLAN FOR SCORING PATTERN.
- CONSTRUCT "L" TYPE CURB AND GUTTER, PER CCAUSD No. 219.
- CONSTRUCT "A" TYPE CURB, PER CCAUSD No. 219.
- CONSTRUCT SIDEWALK RAMP (CASE II), PER CCAUSD No. 235. A=B=6.5'
- ADJUST MANHOLE RIM TO FINISH GRADE PER DCSWCS SD-3B AND REPLACE RING AND COVER PER CCAUSD No. 409.
- ADJUST VALVE TO FINISH GRADE PER UDACS PLATE B.
- CONSTRUCT MEDIAN PER DETAIL 1 ON SHEET DT-2.
- ADJUST MANHOLE RIM TO FINISH GRADE PER DCSWCS SD-3B AND REPLACE EXISTING MANHOLE RING AND COVER WITH CLV SANITARY SEWER MANHOLE COVER PER DETAILS 1 ON SHEET DT-3.
- REMOVE AND REPLACE EXISTING MONUMENT PER CCAUSD No. 241.
- CONSTRUCT DEPRESSED DRIVEWAY PER DETAIL 3 ON SHEET DT-1.
- CONSTRUCT 6" THICK CONCRETE SIDEWALK WITH REBAR PER SPECIFICATIONS IN DETAIL 3 ON SHEET DT-1.
- REPAIR OR REPLACE SIDEWALK TO MATCH EXISTING. SEE SIGNAL PLANS FOR WORK LIMIT IN SIDEWALK.

**LINE TABLE**

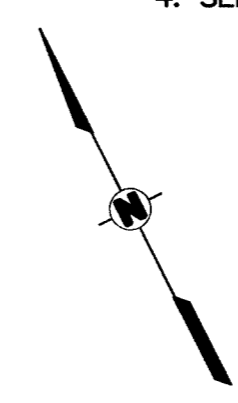
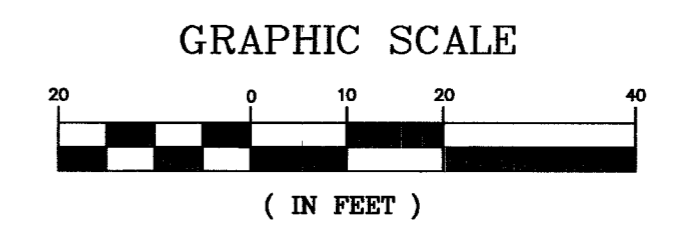
LINE	LENGTH	BEARING
L1	150.68	S62°19'06"E
L2	86.41	S62°19'06"E
L3	8.99	S62°19'06"E
L4	1.98	S27°55'05"W
L5	8.03	N28°15'44"E
L6	79.26	S62°19'06"E
L7	161.48	S62°19'06"E

**CURVE TABLE**

CURVE	LENGTH	RADIUS	TANGENT	DELTA
C1	39.10'	25.00'	24.83'	89°36'09.3"
C2	9.88'	10.00'	5.39'	56°37'58.8"
C3	9.88'	10.00'	5.39'	56°37'58.8"
C4	7.95'	10.00'	4.20'	45°34'22.8"
C5	7.95'	10.00'	4.20'	45°34'22.8"
C6	39.17'	25.00'	24.90'	89°45'49.0"
C7	8.93'	10.00'	4.79'	51°09'52.7"
C8	8.86'	10.00'	4.75'	50°46'43.6"
C9	39.02'	25.00'	24.75'	89°25'10.8"
C10	7.95'	10.00'	4.20'	45°34'22.8"
C11	7.95'	10.00'	4.20'	45°34'22.8"
C12	9.88'	10.00'	5.39'	56°37'58.8"
C13	9.88'	10.00'	5.39'	56°37'58.8"
C14	47.46'	30.00'	30.34'	90°38'59.4"
C15	8.94'	10.00'	4.80'	51°14'16.1"
C16	9.04'	10.00'	4.85'	51°46'12.6"

**NOTES**

- SEE LH & IR SHEETS FOR LANDSCAPING AND IRRIGATION.
- SEE SM, SL, & EL SHEETS FOR SIGNING AND MARKING, STREETLIGHTING AND INTERCONNECT, SIGNAL AND ELECTRICAL PLANS.
- SEE SD, SS & UT SHEETS FOR STORM DRAIN, SEWER AND UTILITY PLANS.
- SEE SPD SHEETS FOR SPECIAL SIGNS PLANS.



Avoid cutting underground utility lines. It's costly.  
**Call before you Dig**  
 1-800-227-2600

**SAFETY ALERT**  
 Call Before You Overhead  
 1-702-455-7511  
 1-702-229-6611

**Call before you UnderGround**  
 1-702-455-7511  
 CLARK COUNTY TRAFFIC OPERATIONS AND  
 1-702-229-6611  
 LAS VEGAS AREA COMPUTERIZED TRAFFIC SYSTEM

**DEPARTMENT OF PUBLIC WORKS**

**FREMONT STREET**  
 PEDESTRIAN IMPROVEMENTS  
 LAS VEGAS BLVD. - 8TH ST.

**CONSTRUCTION PLAN AND PROFILE**  
 STA 9+45 TO 13+80

**Kimley-Horn and Associates, Inc.**  
 Engineering, Planning, and Environmental Consultants  
 1050 E. Flamingo Road, Suite 5210, Las Vegas, NV, 89119  
 Ph. (702) 734-5666 Fax. (702) 734-5666

**Professional Engineer Seal:** KHALIL A. AMRIKANI, CIVIL, Exp. 12-31-06, No. 14366, 10/12/06

**REVISIONS:**

NO.	DATE	DESCRIPTION
1	MARCH, 2006	DATE CHECKED BY: KAA
2		DESIGNED BY: PM
3		SCALE (V): N/A
4		SCALE (H): C/B
5		DRAWN BY: C/B

**DATE:** MARCH, 2006  
**CHECKED BY:** KAA  
**DESIGNED BY:** PM  
**SCALE (V):** N/A  
**SCALE (H):** C/B  
**DRAWN BY:** C/B

**SHEET NO.:** C-1  
**EXP. DATE:** 12-31-06  
**DRAWING NO.:** 107V45681  
**DATE:** 10/12/06

**STP-0701081**

FREMONT STREET FINAL DESIGN