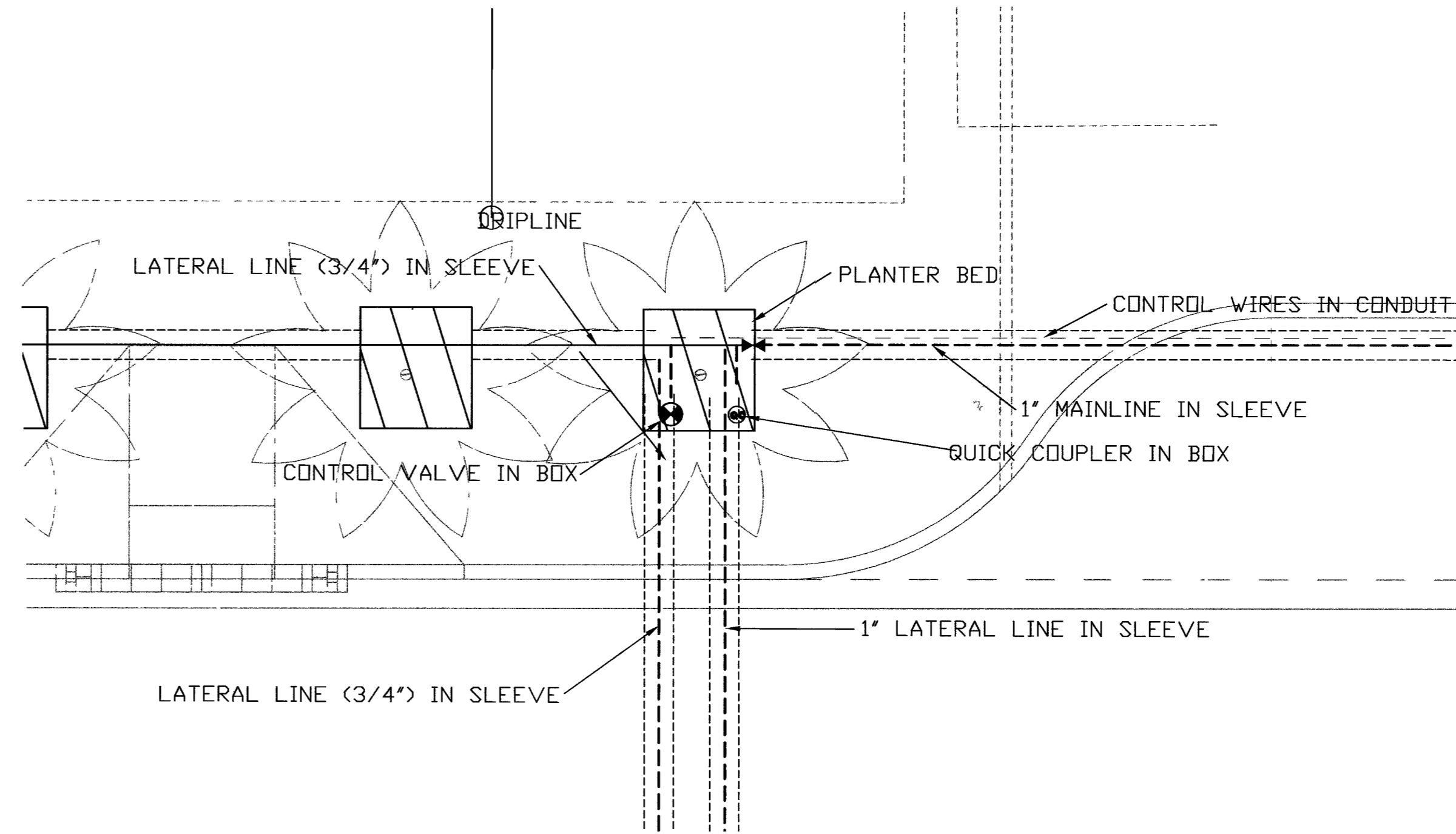
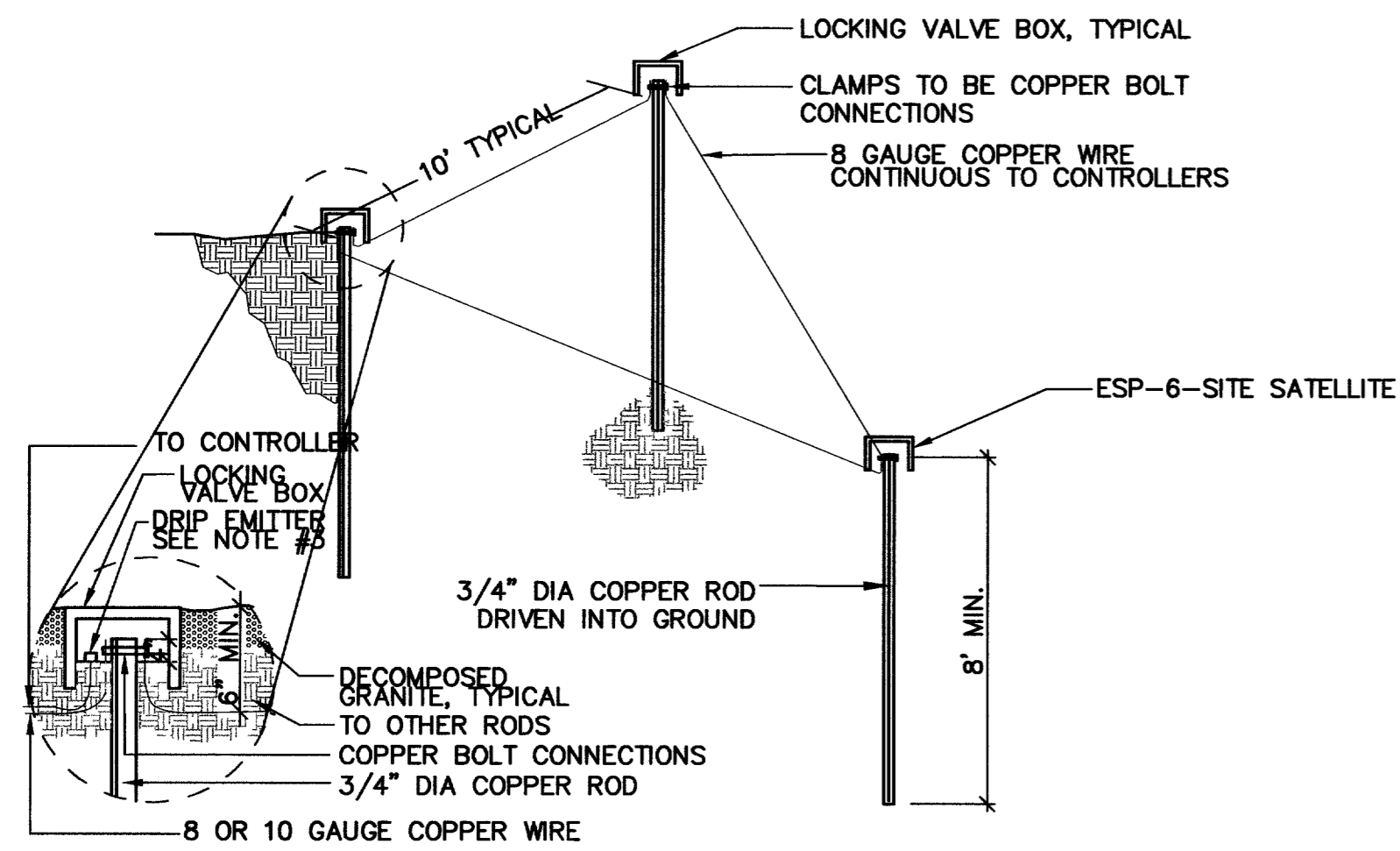


1 ESP-6-SITE SATELLITE CONTROLLER PEDESTAL MOUNT N.T.S.

NOTE:
 1. CONTRACTOR TO PROVIDE GROUND FOR SATELLITE CONTROLLER AS PER DETAIL 3, THIS SHEET.
 2. MOUNT ALL COMPONENTS WITH STAINLESS STEEL HARDWARE PER RAINBIRD RECOMMENDATIONS.



3 IRRIGATION PLAN ENLARGEMENT N.T.S.

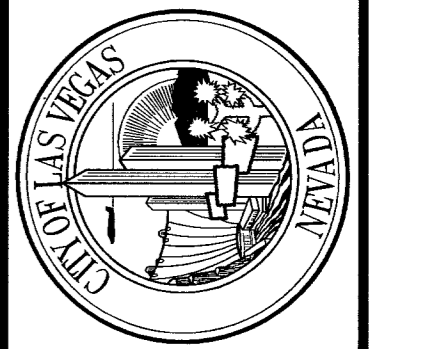


2 GROUNDING FOR IRRIGATION CONTROLLER N.T.S.

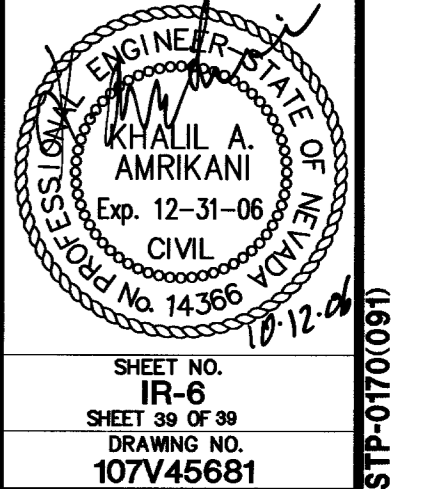
DATE	REVISIONS
MARCH, 2006	

SCALE (H): 1" = 30'
 SCALE (V): 1" = 20"
 DRAWN BY: SM
 DESIGNED BY: SM
 CHECKED BY: SM
 DATE: MARCH, 2006

Kimley-Horn and Associates, Inc.
 Engineering, Planning, and Environmental Consultants
 1050 E. Flamingo Road, Suite S210, Las Vegas, NV, 89119
 Ph. (702) 734-5666 Fax. (702) 734-5666



DEPARTMENT OF PUBLIC WORKS
 PROJECT: FREMONT STREET PEDESTRIAN IMPROVEMENTS LAS VEGAS BLVD. - 8TH ST.
 SHEET: IRRIGATION DETAILS



Avoid cutting underground utility lines. It's costly.
Call before you Dig
 1-800-227-2600

SAFETY ALERT
 Call Before You Overhead
 1-702-455-7511
 1-702-229-6611

Call before you UnderGround
 1-702-455-7511
 CLARK COUNTY TRAFFIC OPERATIONS AND LAS VEGAS AREA COMPUTERIZED TRAFFIC SYSTEM
 1-702-229-6611

Oct 12, 2006 - 3:56pm - USER maria garcia C:\Documents and Settings\maria.garcia\Desktop\CAD\IR-1.dwg

99207

FREMONT STREET FINAL DESIGN

STP-0707081