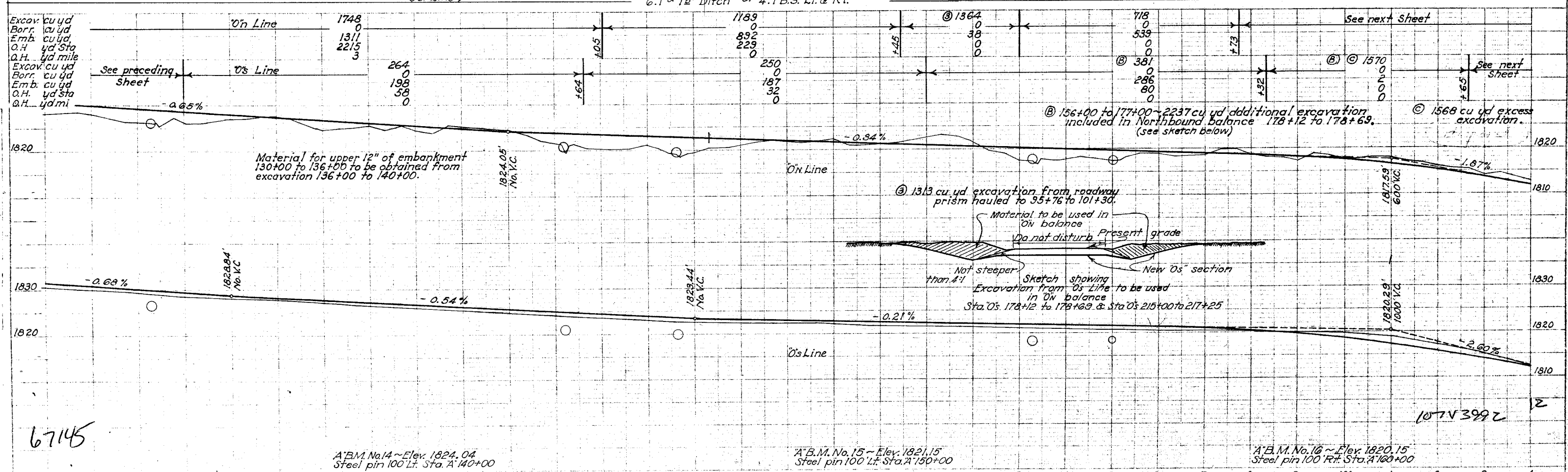
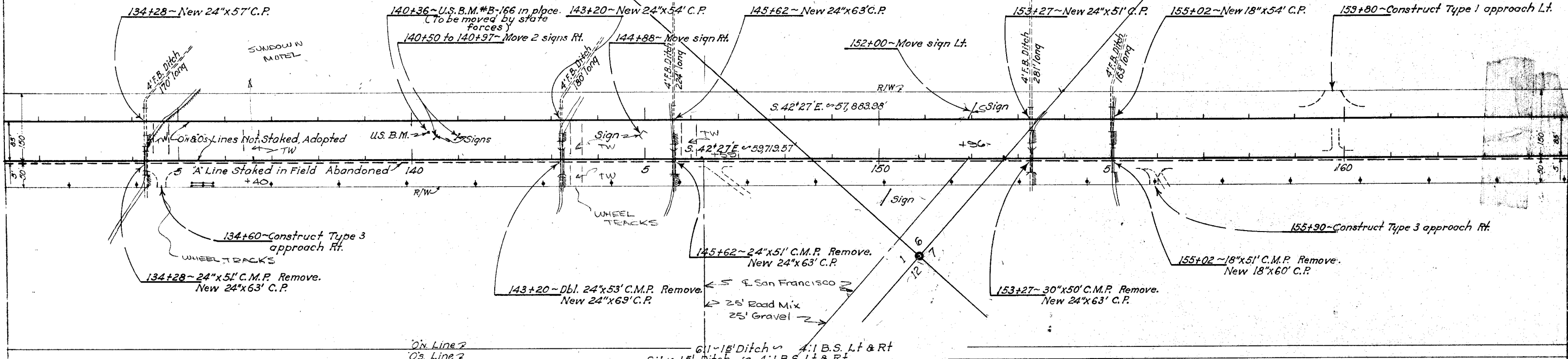


J. C. FISHER COLORADO RIVER EXPLORATION COMPANY LTD LAKE MEAD HOTEL AND RESORT CORP



67145

A.B.M. No. 14 ~ Elev. 1824.04
 Steel pin 100' Lt. Sta. A' 140+00

A.B.M. No. 15 ~ Elev. 1821.15
 Steel pin 100' Lt. Sta. A' 150+00

A.B.M. No. 16 ~ Elev. 1820.15
 Steel pin 100' Rt. Sta. A' 160+00

107V399Z