

SHEET NO. DA-WI-3

- 1. Title Page.
- 2. Typical Sections.
- 2A. Summaries.
- 2B. Estimate of Quantities.
- 3-23. Plan and Profile.
- 24-27. Structure List.
- 28-29. Intersection Details.
- 30. Transition Details.
- 31. Special Details.
- 32-34. Bridge Details.
- 35. Standard Timber Bridge.
- 36. Location Sketch, Materials & Channels.
- 37. Permanent Signs.
- 38. Curb, Neutral Strip and Inlet Details.
- 39. Special Structures.
- 40. Standard Approach Road.
- 41. Standard Signs (Sheet No. 1)
- 42. Standard Plain Concrete Pipe Headwalls.
- 43. Standard Slope Rounding and Warping.
- 44. Standard Details.
- 45. Standard Metal Guard Rail.
- 46. Standard Field Laboratory Test Shed.
- 46. Cross Sections Filed in Carson Office.

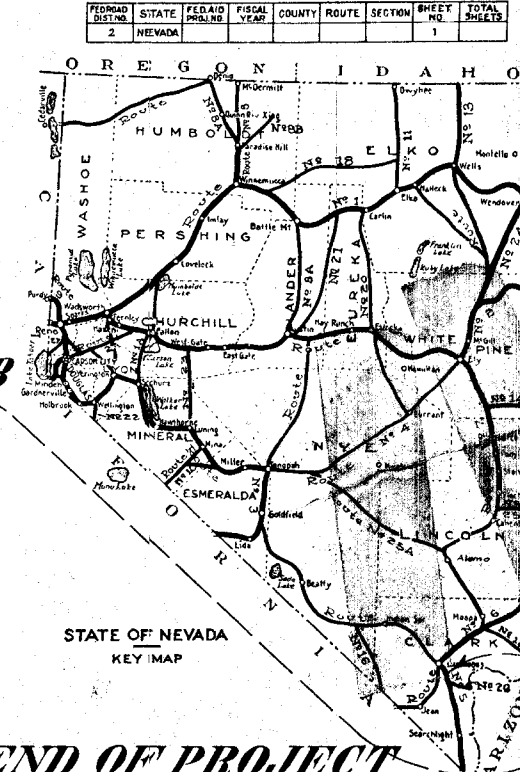
STATE OF NEVADA
DEPARTMENT OF HIGHWAYS

**PLAN AND PROFILE OF PROPOSED
STATE HIGHWAY
CLARK COUNTY
LAS VEGAS TO 11.6 MI. S.E.**

PROJECT No. DA-WI-3

~ REVISIONS ~

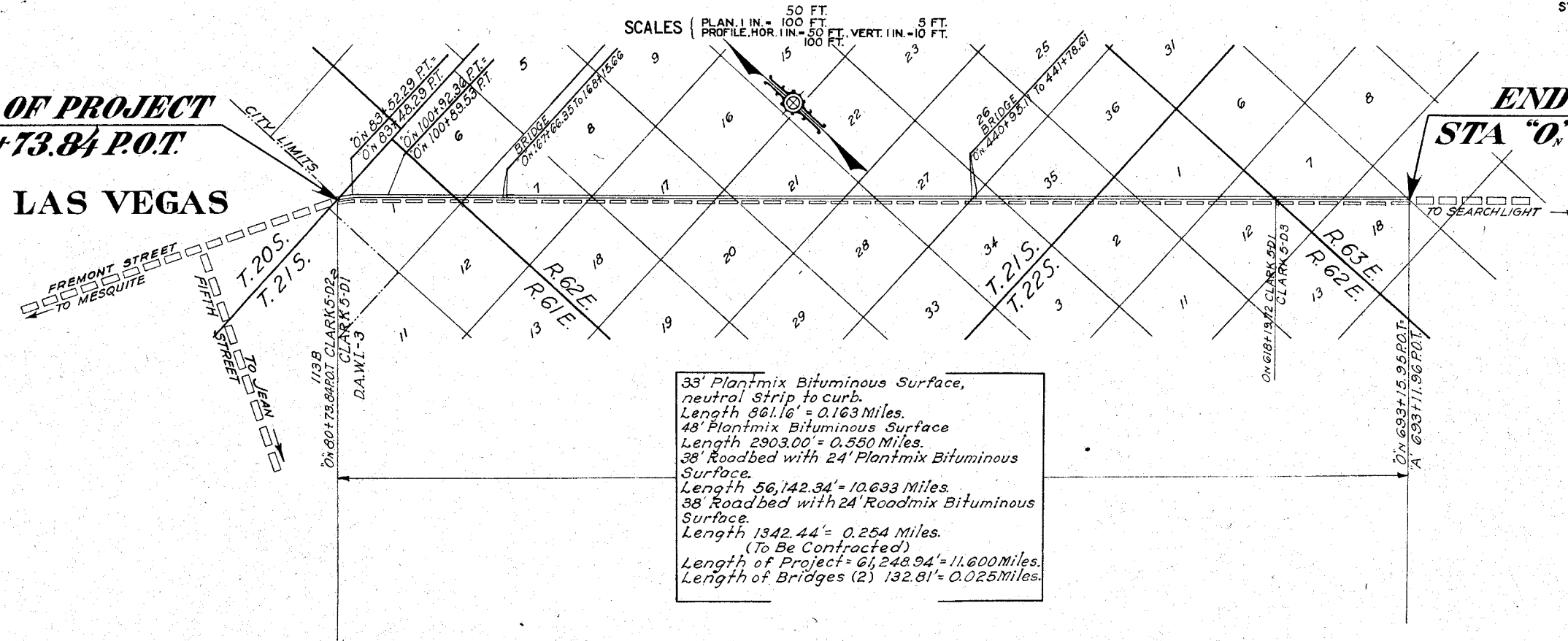
Date Revised	Sheets Revised
Mar. 24, 1942	2, 2A, 2B, 34, 39



BEGINNING OF PROJECT
STA "0" 80+73.84 P.O.T.

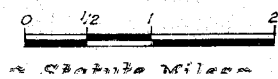
LAS VEGAS

END OF PROJECT
STA "0" 693+15.95 P.O.T.



CONVENTIONAL SIGNS

- | | |
|-----------------------|------------------------------|
| STATE LINE | LEVEE |
| COUNTY LINE | CULVERTS |
| INCORP'D CITY OR TOWN | RETAINING WALL |
| TOWNSHIP LINE | DROP INLET |
| SECTION LINE | TROLLEY POLES |
| RESERVATION LINE | POWER POLE |
| FENCE LINE | TELEPHONE OR TELEGRAPH POLES |
| UNFENCED PROPERTY | MARSH |
| RIGHT OF WAY LINE | TREES |
| TRAVELED WAY | |
| RAILROADS | |
| BASE OR SURVEY LINE | |



APPROVED March 4, 1942:
Robert A. Allen STATE HIGHWAY ENGR.
 E. P. Carville CHAIRMAN
 Gray Mashburn BOARD OF DIRECTORS
 Henry C. Schmidt

RECOMMENDED FOR APPROVAL
 DISTRICT ENGINEER
 PUBLIC ROADS ADMINISTRATION
 FEDERAL WORKS AGENCY
 RECOMMENDED FOR APPROVAL
 CHIEF, WESTERN REGION
 PUBLIC ROADS ADMINISTRATION
 FEDERAL WORKS AGENCY
 APPROVED
 107V3992
 COMMISSIONER

67134