

BASIS OF BEARING

SOUTH 06°05'51" EAST, BEING THE BEARING OF THE EAST LINE OF SECTION 36, TOWNSHIP 20 SOUTH, RANGE 60 EAST, M.D.M., AS SHOWN BY MAP THEREOF ON FILE IN BOOK 74, PAGE 71 OF PLATS, OFFICIAL RECORDS OF CLARK COUNTY, NEVADA.

BENCHMARK

RIVET AND PLATE IN TOP OF CURB @ TOWN CENTER AND VILLAGE CENTER ON WEST EDGE OF ROUNDABOUT.
CITY OF LAS VEGAS BENCHMARK 01V00 1954
NAVD 88 ELEVATION = 831.6122 METERS, 2728.38 FEET
SUMMERLIN ELEVATION: 2726.11 FEET

QUANTITIES ESTIMATE (PUBLIC)

DESCRIPTION	UNIT
1. 8" D.C.D.A.	1 EA.
2. 2" R.P.P.A.	1 EA.
3. 8" PVC WATER LINE	41 LF.
4. 2" PVC WATER LINE	36 LF.
5. FIRE HYDRANT	1 EA.

UTILITY NOTES

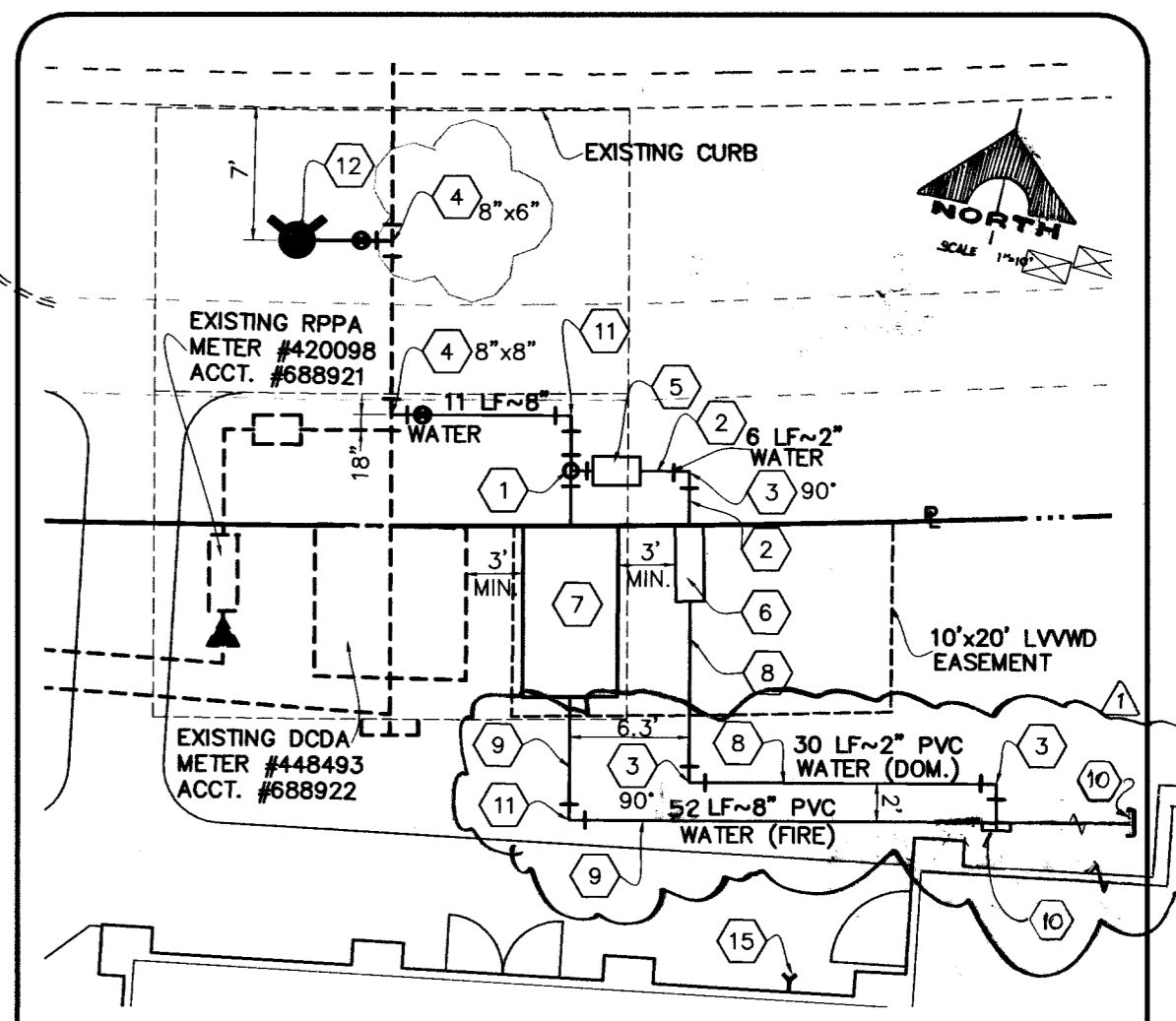
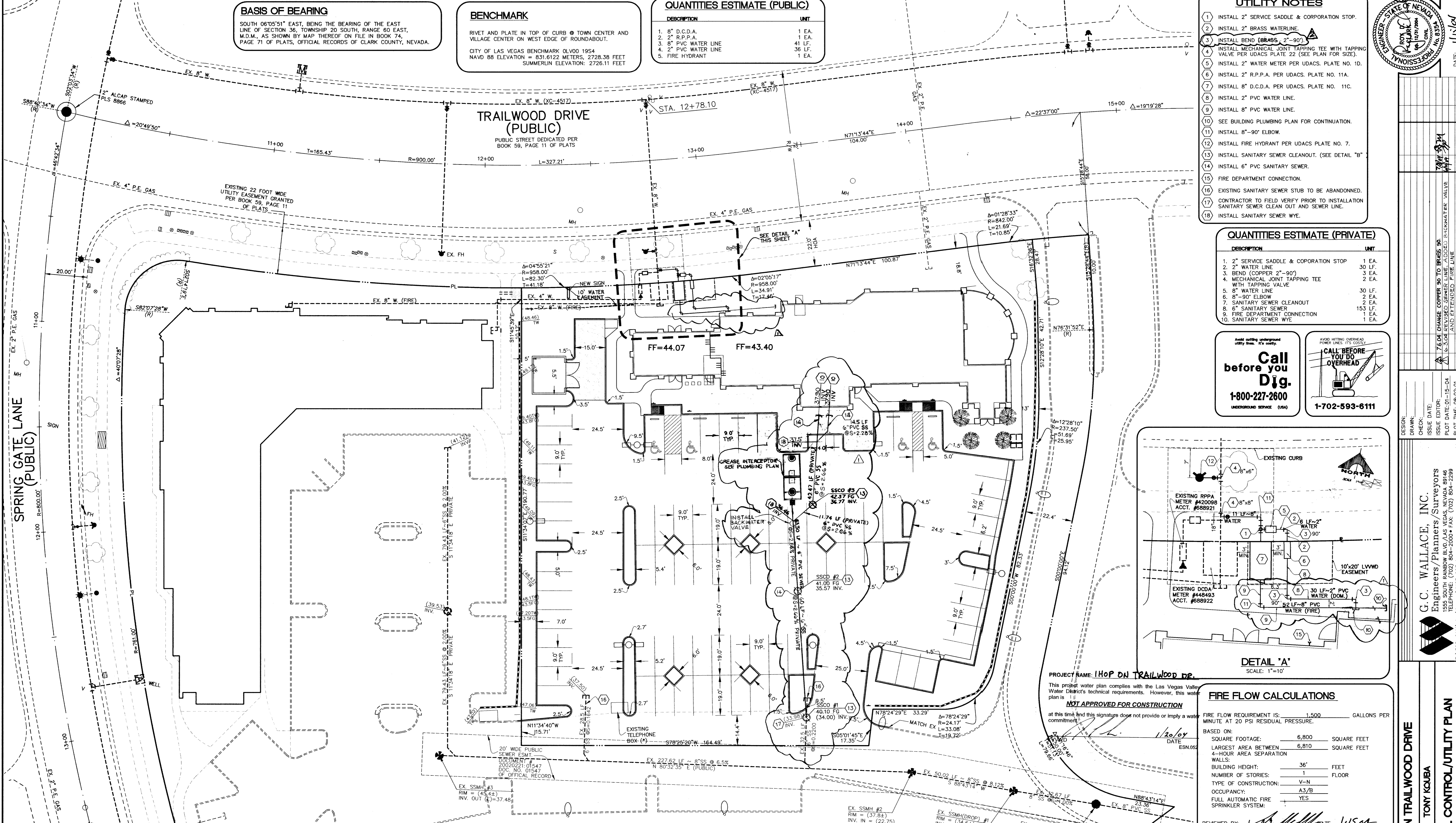
1. INSTALL 2" SERVICE SADDLE & CORPORATION STOP.
2. INSTALL 2" BRASS WATERLINE.
3. INSTALL BEND (BRASS, 2"-90°).
4. INSTALL MECHANICAL JOINT TAPPING TEE WITH TAPPING VALVE PER UDACS PLATE 22 (SEE PLAN FOR SIZE).
5. INSTALL 2" WATER METER PER UDACS. PLATE NO. 1D.
6. INSTALL 2" R.P.P.A. PER UDACS. PLATE NO. 11A.
7. INSTALL 8" D.C.D.A. PER UDACS. PLATE NO. 11C.
8. INSTALL 2" PVC WATER LINE.
9. INSTALL 8" PVC WATER LINE.
10. SEE BUILDING PLUMBING PLAN FOR CONTINUATION.
11. INSTALL 8"-90° ELBOW.
12. INSTALL FIRE HYDRANT PER UDACS PLATE NO. 7.
13. INSTALL SANITARY SEWER CLEANOUT. (SEE DETAIL "B")
14. INSTALL 6" PVC SANITARY SEWER.
15. FIRE DEPARTMENT CONNECTION.
16. EXISTING SANITARY SEWER STUB TO BE ABANDONED.
17. CONTRACTOR TO FIELD VERIFY PRIOR TO INSTALLATION SANITARY SEWER CLEAN OUT AND SEWER LINE.
18. INSTALL SANITARY SEWER WYE.

QUANTITIES ESTIMATE (PRIVATE)

DESCRIPTION	UNIT
1. 2" SERVICE SADDLE & CORPORATION STOP	1 EA.
2. 2" WATER LINE	30 LF.
3. BEND (COPPER 2"-90°)	3 EA.
4. MECHANICAL JOINT TAPPING TEE WITH TAPPING VALVE	2 EA.
5. 8" WATER LINE	30 LF.
6. 8"-90° ELBOW	2 EA.
7. SANITARY SEWER CLEANOUT	2 EA.
8. 6" SANITARY SEWER	15.5 LF.
9. FIRE DEPARTMENT CONNECTION	1 EA.
10. SANITARY SEWER WYE	1 EA.

Call before you Dig.
1-800-227-2600
UNDERGROUND SERVICE (USA)

CALL BEFORE YOU DO OVERHEAD
1-702-593-6111



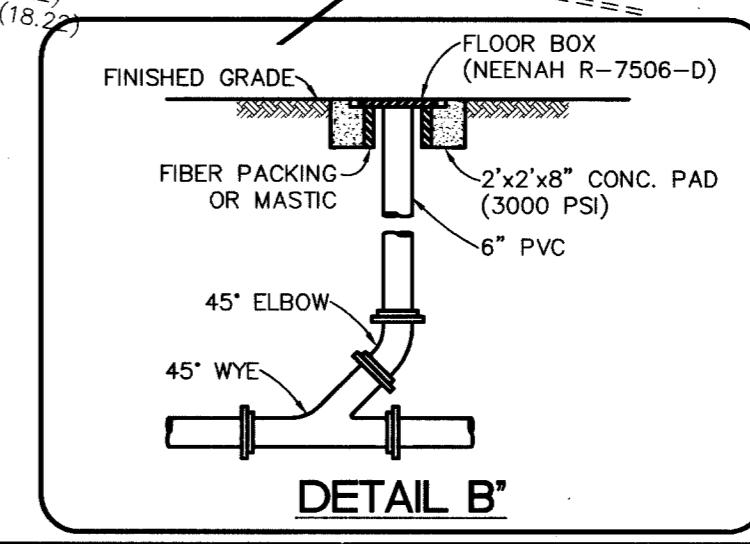
PROJECT NAME: HOP ON TRAILWOOD DR.
This project water plan complies with the Las Vegas Valley Water District's technical requirements. However, this water plan is **NOT APPROVED FOR CONSTRUCTION** at this time and this signature does not provide or imply a water commitment.
DATE: 1/20/04
ESN: 002

FIRE FLOW CALCULATIONS

FIRE FLOW REQUIREMENT IS: 1,500 GALLONS PER MINUTE AT 20 PSI RESIDUAL PRESSURE.

BASED ON:
 SQUARE FOOTAGE: 6,800 SQUARE FEET
 LARGEST AREA BETWEEN: 6,810 SQUARE FEET
 4-HOUR AREA SEPARATION WALLS:
 BUILDING HEIGHT: 36' FEET
 NUMBER OF STORIES: 1 FLOOR
 TYPE OF CONSTRUCTION: V-N
 OCCUPANCY: A3/B
 FULL AUTOMATIC FIRE SPRINKLER SYSTEM: YES

REVIEWED BY: [Signature] DATE: 1/15/04



EASEMENT WITH TREES, SHRUBS, DECORATIVE ROCKS, BLOCK WALL, OR FENCE

TREES, SHRUBS, OR DECORATIVE ROCKS, AND ANY BLOCK WALL OR OTHER FENCE MATERIAL, SHALL BE DESIGNED AND CONSTRUCTED AROUND THE EASEMENT(S) TO ALLOW THE DISTRICT DIRECT ACCESS TO THE VAULT(S), BLACK FLOW ASSEMBLIES, AND PIPING FROM THE ADJACENT RIGHT-OF-WAY.

DOUBLE CHECK DETECTOR ASSEMBLY (DCDA)

THE DOUBLE CHECK DETECTOR ASSEMBLIES SHALL BE INSTALLED IN ACCORDANCE WITH THE UDACS PLATE NO. 11C.
ANY BLOCK WALL OR OTHER FENCE MATERIAL SHALL BE DESIGNED AND CONSTRUCTED AROUND THE OUTSIDE OF THE EASEMENT(S) SO AS TO ALLOW THE DISTRICT DIRECT ACCESS FROM THE ADJACENT RIGHT-OF-WAY.
EASEMENTS SHALL BE CLEARLY MARKED OR STAKED PRIOR TO THE START OF CONSTRUCTION.

REDUCED PRESSURE PRINCIPLE ASSEMBLY 1-2'

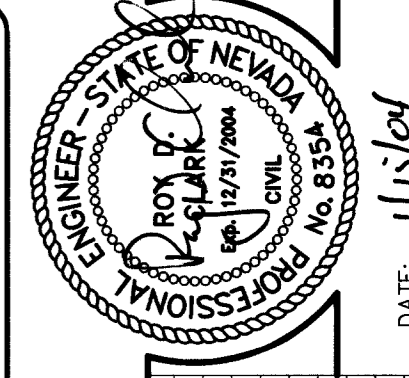
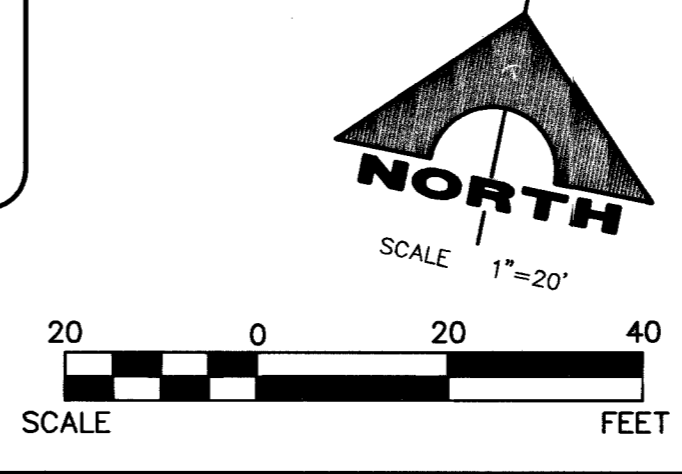
APPROVED REDUCED PRESSURE PRINCIPLE ASSEMBLY(S) SHALL BE INSTALLED PER THE UDACS PLATE NO. 11A. NO WATER SHALL BE TAKEN FROM A SERVICE REQUIRING BACKFLOW PREVENTION UNTIL THE REDUCED PRESSURE PRINCIPLE ASSEMBLY HAS BEEN SUCCESSFULLY TESTED BY THE LVWD. ANY BLOCK WALL OR OTHER FENCE MATERIAL SHALL BE DESIGNED AND CONSTRUCTED AROUND THE OUTSIDE OF THE EASEMENT(S) TO ALLOW THE DISTRICT DIRECT ACCESS FROM THE ADJACENT RIGHT-OF-WAY.

SEWER CONTRIBUTION

AVERAGE FLOW
129 FIXTURES(1.33 ERU)(250 GPD) = 0.043 MGD
PEAK FLOW
(0.043x 9.004)(2.6186) = 0.152 MGD

NOTE: ALL DIMENSIONS ARE FROM BACK OF CURB TO BACK OF CURB, UNLESS OTHERWISE NOTED.
*** NOTE:** EXISTING TELEPHONE BOX LID TO BE REMOVED AND REPLACED WITH A CONCRETE LID AND A ROUND MANHOLE LID ON THE WEST SIDE OF THE BOX.

NOTICE 65107 Rlm 7021072 70995
G.C. WALLACE, INC. ASSUME NO RESPONSIBILITY FOR EXISTING UTILITY SHOWN OR NOT SHOWN. THE UTILITIES SHOWN ON THIS DRAWING HAVE BEEN PLOTTED FROM RECORD INFORMATION AND ARE FOR THE CONVENIENCE OF THE CONTRACTOR ONLY. IT IS THE CONTRACTOR'S RESPONSIBILITY TO FIELD VERIFY THE LOCATION AND DEPTH OF ALL RELEVANT UTILITIES PRIOR TO COMMENCEMENT OF CONSTRUCTION. IF A CONFLICT OR DISCREPANCY IS DISCOVERED, THE CONTRACTOR SHALL NOTIFY THE ENGINEER IN WRITING IMMEDIATELY.



DESIGN: [Signature]
 CHECK: [Signature]
 ISSUE DATE: 1/15/04
 PLOT DATE: 01-15-04
 PLOT TIME: 08:02:01
 REV. DATE: 08:02:01
 REV. DESCRIPTION: [Signature]

G.C. WALLACE, INC.
 Engineers/Planners/Surveyors
 1555 SOUTH RAINBOW BLVD., LAS VEGAS, NEVADA 89146
 TELEPHONE: (702) 804-2000 • FAX: (702) 804-2299
 F: 388-9111 (Vermont) HCP-003.dwg

HOP ON TRAILWOOD DRIVE
 TONY KOUBA
 HORIZONTAL CONTROL/UTILITY PLAN
 SHEET C-3
 3 OF 4 SHEETS