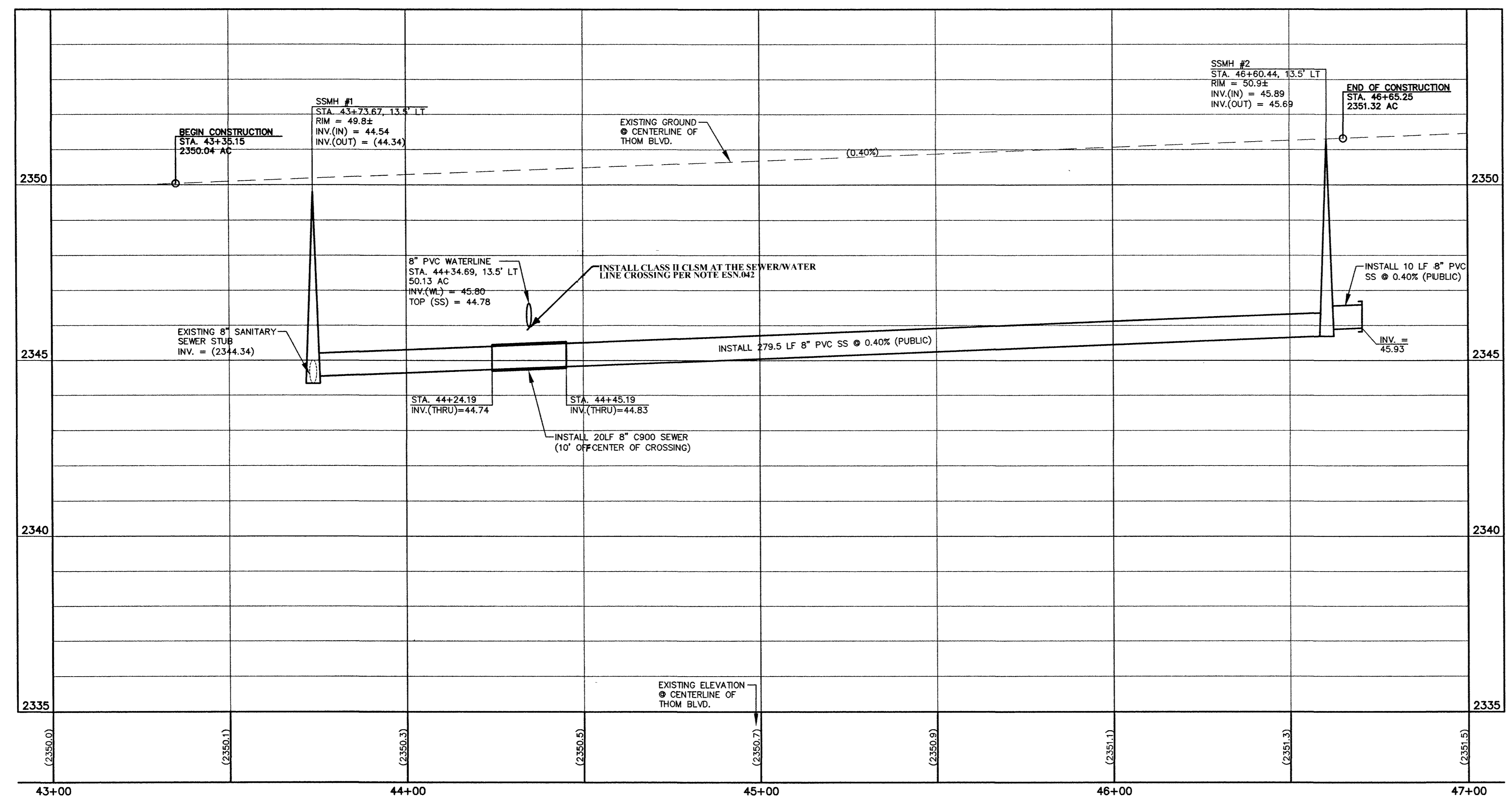
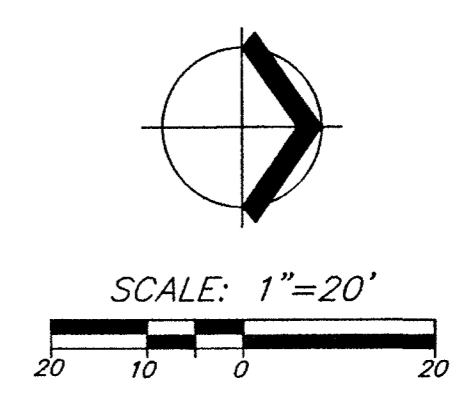
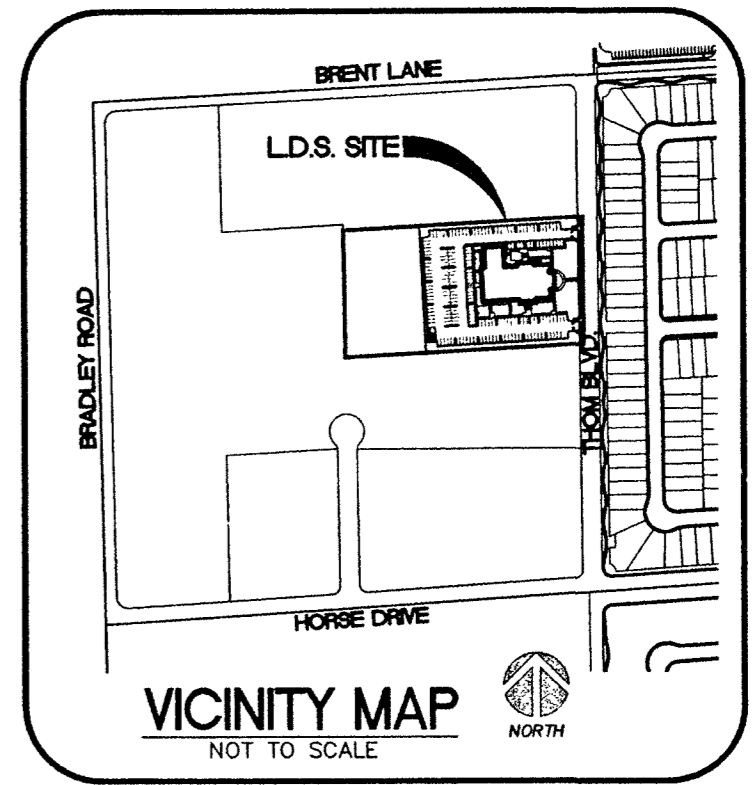


PLAN VIEW - THOM BLVD  
SCALE: HORIZ. 1" = 20'



PROFILE VIEW - THOM BLVD  
SCALE: VERT. 1" = 2'  
HORIZ. 1" = 20'

**RAMP TABLE**

| RAMP # | "A"  | "B"  |
|--------|------|------|
| ①      | 4.5  | 9.5  |
| ②      | 8.0  | 8.0  |
| ③      | 15.0 | 4.5  |
| ④      | 4.5  | 15.0 |

**CURVE TABLE**

| CURVE # | LENGTH | RADIUS | TANGENT | DELTA     |
|---------|--------|--------|---------|-----------|
| C1      | 24.19  | 15.00  | 15.64   | 92°24'13" |
| C2      | 38.22  | 25.00  | 23.97   | 87°35'47" |
| C3      | 24.19  | 15.00  | 15.64   | 92°24'13" |
| C4      | 38.22  | 25.00  | 23.97   | 87°35'47" |

**CONSTRUCTION NOTES**

- CONSTRUCT TYPE "L" CURB AND GUTTER PER STD. DWG. NO. 216. IT WILL HAVE TO BE HAND FORMED, NOT MACHINE FORMED.
- CONSTRUCT 5' SIDEWALK PER STD. DWG. NO. 234
- CONSTRUCT SIDEWALK UNDER DRAIN PER STD. DWG. NO. 236
- CONSTRUCT HANDICAP RAMPS PER STD. DWG. 235, CASE I, SEE RAMP TABLE ON THIS SHEET FOR "A" & "B" TRANSITION LENGTHS
- CONSTRUCT 8' CROSS GUTTER PER STD. DWG. NO. 228
- SIGHT VISIBILITY ZONES AT ENTRANCE PER STD. DWG. NO. 201.2
- CONSTRUCT FULL HALF PUBLIC STREET SECTION PER DETAIL "A" ON SHEET C1.11 AND 50' LONG PAVEMENT APRON EXTENDING BEYOND NORTH AND SOUTH PROPERTY LINE

**BASIS OF BEARING:**

SOUTH 00°36'51" EAST, BEING THE CENTERLINE OF A PORTION OF THOM BOULEVARD AS SHOWN BY MAP IN THE OFFICE OF THE CLARK COUNTY, NEVADA RECORDER IN FILE 103, PAGE 73 OF PARCEL MAPS.

**BENCHMARK:**

CITY OF LAS VEGAS STATION BLV90 1204  
Rivet & Plate in concrete cylinder SE corner of Horse & Bradley.

ELEVATION:  
FEET = 2357.81' (NAVD88)  
METERS = 718.6631 M (NAVD88)

**LEGEND**

|     |                              |         |  |    |                  |
|-----|------------------------------|---------|--|----|------------------|
| --- | PROPERTY LINE / RIGHT-OF-WAY | (A)     | SECTION OR DETAIL IDENTIFIER                                     | AC | ASPHALT CONCRETE |
| --- | "L" TYPE CURB AND GUTTER     | Cliff   | SHEET ON WHICH SECTION OR DETAIL IS SHOWN                        | FF | FINISH FLOOR     |
| --- | EXISTING CURB AND GUTTER     | XX XX   | PROPOSED ELEVATION   | FG | FINISHED GRADE   |
| --- | EDGE OF PAVEMENT             | (XX XX) | EXISTING ELEVATION   | FL | FLOW LINE        |
| --- | CROSS GUTTER                 | TC      | FUTURE ELEVATION   | FS | FINISH SURFACE   |
| --- | PROPOSED SIDEWALK            | ---     | EXISTING 1 FT. CONTOURS  | GB | GRADE BREAK      |
| --- | REMOVED AND REPLACED         | ---     | EXISTING 5 FT. CONTOURS  | HP | HIGH POINT       |
| --- | FLOOD WALL                   | ---     | PROPOSED 1 FT. CONTOURS  | TC | TOP OF CURB      |
| --- | RETAINING WALL               | ---     | PROPOSED SIGHT VISIBILITY ZONE (NOTHING HIGHER THAN 30' ALLOWED) | TF | TOP OF FOOTER    |
| --- |                              | ---     |  | TW | TOP OF WALL      |

**DISCLAIMER NOTE**

UTILITY LOCATIONS SHOWN HEREON ARE APPROXIMATE ONLY. IT SHALL BE THE CONTRACTOR'S RESPONSIBILITY TO DETERMINE THE EXACT HORIZONTAL AND VERTICAL LOCATION OF ALL EXISTING UNDERGROUND UTILITIES PRIOR TO COMMENCING CONSTRUCTION. NO REPRESENTATION IS MADE THAT ALL EXISTING UTILITIES ARE SHOWN HEREON. THE ENGINEER ASSUMES NO RESPONSIBILITY FOR UTILITIES NOT SHOWN OR UTILITIES NOT SHOWN IN THEIR PROPER LOCATION.

**Call before you Dig**  
1-800-227-2000  
UNDERGROUND SERVICE (USA)

**Call before you Overhead**  
1-702-227-2929

60529 10/13/04

**APPROVED FOR CONSTRUCTION**

LAS VEGAS VALLEY WATER DISTRICT

2/11/04

I CERTIFY THAT THIS GRADING PLAN CONFORMS TO THE APPROVED TECHNICAL DRAINAGE STUDY FOR THIS SITE ON FILE AT THE CITY OF LAS VEGAS

Michael P. Bailey, P.E. #10264

GARY W. MILLER  
624 SOUTH 9TH STREET  
LAS VEGAS, NEVADA 89101  
(702) 434-9695 FAX: (702) 434-9615

W R G  
D E S I G N I N G  
2260 Corporate Circle, Ste 130 Henderson, NV 89014  
702.990-9300 FAX: 702.990-9305  
PLANNERS • ENGINEERS • LANDSCAPE ARCHITECTS • SURVEYORS

**PLAN AND PROFILE - THOM BLVD.  
GILCREASE RANCH MEETINGHOUSE**

CITY OF LAS VEGAS, CLARK COUNTY, NEVADA

DATE: 08/22/03  
DESIGNED: J. COWART  
CHECKED: G. BAROULL  
ENGINEER: M. BAILEY  
SCALE: 1" = 20' HORIZ  
1" = 2' VERT  
WRG PROJECT NO. 3033195.00

APPROVED FOR CONSTRUCTION

Michael P. Bailey  
Professional Engineer  
No. 10264

Michael P. Bailey  
SHEET TITLE  
**PLAN & PROFILE  
THOM BLVD.**  
SHEET NUMBER  
**C1.10**  
SHEET 10 OF 12  
CLV DRAWING NO.  
107V 3867